

SNR-S5210X-8F

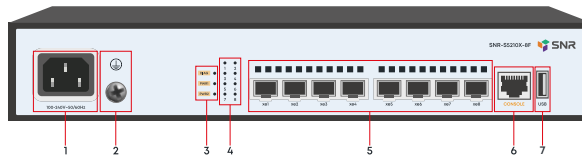
Managed L2+ Ethernet Switch

Quick Install Guide

SNR-S5210X-24FX Quick Install Guide

This guide describes the steps of installing the switch, including the basic introduction to the product, the basic installation steps, etc.

1. Front and back panels description



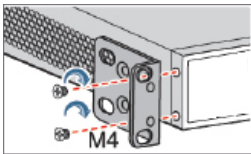
Nº	Item	Description	
1	~100-240V; 50/60Hz	The AC power socket, AC rated voltage range: 100-240V AC 50/60 Hz	
2	Grounding	The Grounding screw	
3	DIAG	Switch status LED	
		Green	System is starting or abnormal
	PWR1, PWR2	Green (Blink)	System works normally
		PRW1 - AC power LED, PWR2 - DC power LED	
4	xe1-8	Port LEDs	
		Off	No link on port
		Green	The port has a valid link
		Green (Blink)	Blinking indicates activity on port
5	xe1-8	1/10GBase-X SFP+ ports	
6	CONSOLE	Console port	
7	USB	USB port	

2. Switch installation

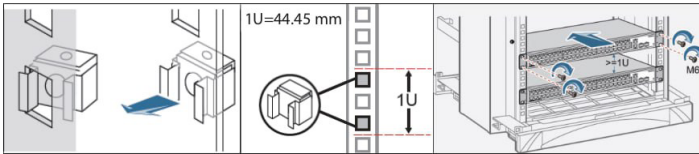
Before installation, take ECD-preventive measures, such as wearing the ESD-preventive gloves or a wrist strap.

2.1 Install the device in a 19" cabinet

Fix the rack mount brackets.



Fix the captive nuts, and install the device in a cabinet. Attention: leave more than 1U space between the devices for proper heat dissipation.

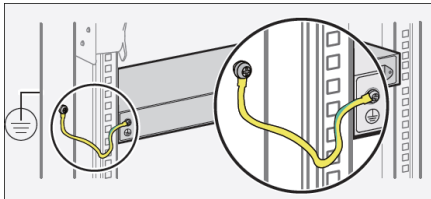


2.2 Install the device on a worktable

Stick the rubber gasket, and install the device on a worktable.

2.3 Connect the PGND cable and power cable

Connect the switch with the PC NIC interface. Power on the switch.



Connect the AC power cable.

3. Access to initial switch configuration

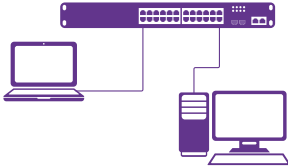
3.1 Access to the switch via console port

Connect console cable to switch via RJ-45 connector and another side to RS-232 port of the PC. Settings of the COM-port are below:

Parameter	Value
Bitrate	115200
Databits	8
Parity	None
StopBits	1
FlowControl	None

Use default username admin and password admin to access the switch.

3.2 Access to the switch via Ethernet port



Connect the switch with the PC NIC interface. Power on the switch. Check whether the IP-address of the computer is within this network segment: 192.168.1.xxx (“xxx” ranges 2~254), for example, 192.168.1.100. Open telnet connection to address 192.168.1.1.

Parameter	Value
Switch default IP-address	192.168.1.1
Default username	admin
Default password	admin

4. Technical support

NAG service and technical support center:

NAG LLC

Address: Office M-03, Al Garhoud Business center Building. UAE, Dubai

Website: snr.global

Technical support portal: snr.support

Tel: +971 0 42599967