

SNR-S2995G-48TX-POE

Managed L3 PoE Ethernet Switch

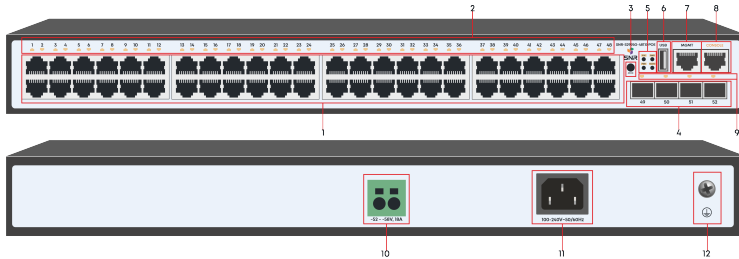
Quick Install Guide



Quick Install Guide

This guide describes the steps of installing the switch, including the basic introduction to the product, the basic installation steps, etc.

1. Front and back panels description



№	Наименование	Описание	
1	1-48	10/100/1000BaseT ports	
2	1-48	Ethernet port LEDs	
		Off	No link on port
		Green	The port has a valid link
		Green (Blink)	Blinking indicates activity on port
3	MODE	Port LEDs mode switch	
4	49-52	SFP+ 1/10GbE ports	
5	DIAG	Switch status LED	
		Green	System is starting or abnormal
		Green (Blink)	System works normally
	PWR	Power LED	
		Green	Power is on
		Off	Power is off or error
	MGMT	Management port LED	
		Off	No link on port
		Green	The port has a valid link
		Green (Blink)	Blinking indicates activity on port
POE	Link/PoE mode LED		
	Off	Port LEDs indicate link status	
	Green	Port LEDs indicate PoE status	
6	USB	USB port	

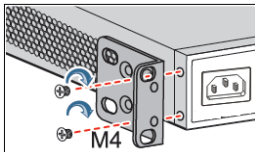
7	MGMT	Management port
8	Console	Console port
9	49-52	SFP+ ports LEDs
10	-52— -58V, 18A	The DC power socket, rated voltage range -52— -58V, 18A
11	100-240V~ 50/60Hz	The AC power socket, AC rated voltage range: 100-240V AC; 50/60Hz
12	Grounding	The Grounding bolt

2. Switch installation

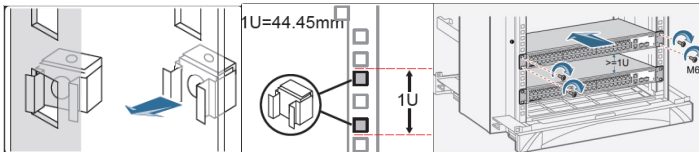
Before installation, take ECD-preventive measures, such as wearing the ESD-preventive gloves or a wrist strap.

2.1 Install the Device in a 19" Cabinet

Fix the Rack Mount Brackets.



Fix the captive nuts, and install the device in a cabinet. Attention: leave more than 1U space between the devices for proper heat dissipation.

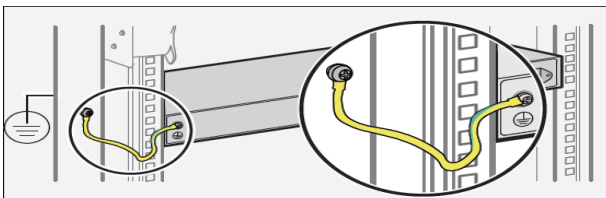


2.2 Install the Device on a Worktable

Stick the rubber gasket, and install the device on a worktable.

2.3 Connect the PGND cable and power cable

Connect grounding cable to the ground bus and to the switch.



Connect the AC power cable.

3. Access to initial switch configuration

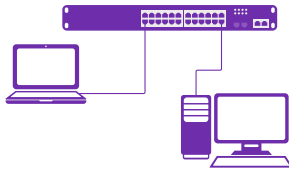
3.1 Access to the switch via console

Connect console cable to switch via RJ-45 connector and another side to RS-232 port of the PC. Settings of the COM-port are below.

Parameter	Value
Bitrate	115200
Databits	8
Parity	None
StopBits	1
FlowControl	None

Use default username admin and password admin to access the switch.

3.2 Access to the switch via Ethernet port



Connect the Switch with the PC NIC interface. Power on the Switch. Check whether the IP-address of the computer is within this network segment: 192.168.1.xxx ("xxx" ranges 2~254), for example, 192.168.1.100. Open the browser, and enter `http://192.168.1.1` and then press «Enter» or open telnet connection to address 192.168.1.1.

Parameter	Value
Switch default IP-address	192.168.1.1
Default username	admin
Default password	admin

4. Technical support

NAG service and technical support center:

NAG LLC

Address: Office M-03, Al Garhoud Business center Building. UAE, Dubai

Website: snr.global

Technical support portal: snr.support

Tel: +971 0 42599967