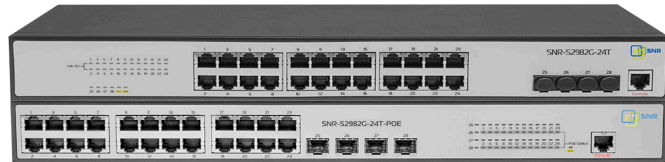


SNR S2982G series

L2 Managed Switches



The S2982G series SNR switches are intelligent Layer 2 GigabitEthernet switches, designed for use at the access level in internet service providers and enterprise networks.

Main features:

- GigabitEthernet switch with a line-rate efficiency
- Build-in power surge protection on each port
- Power supply backup
- Backup protocols with a fast convergence
- Wide range of security features
- Multicast traffic management: IGMP Snooping/Filter, MVR
- Powerful features for managing quality of service (QoS)

Switch Models

The SNR-S2982G series switches are equipped with GigabitEthernet downlink ports and GigabitEthernet SFP uplink ports. The compact 8T model and S2982G-24TE model with improved chassis are also among them.

| Model | 10/100/1000 Base-T | 100/1000 Base-X SFP |
|------------------|--------------------|---------------------|
| S2982G-8T | 8 | 2 |
| S2982G-24T | 24 | 4 |
| S2982G-24TE | 24 | 4 |
| S2982G-24T-POE | 24 | 4 |
| S2982G-24T-POE-E | 24 | 4 |

High performance

The SNR-S2982G series switches are built with modern chipsets and have a non-blocking switching matrix that allows all switch ports to operate simultaneously at full speed. It also guarantees high performance and minimal network latency.

| Model | Switching Capacity | Forwarding Rate | MAC |
|------------------|--------------------|-----------------|-----|
| S2982G-8T | 20 Gbps | 14,9 Mpps | 8K |
| S2982G-24T | 56 Gbps | 41,7 Mpps | 8K |
| S2982G-24TE | 56 Gbps | 41,7 Mpps | 8K |
| S2982G-24T-POE | 56 Gbps | 41,7 Mpps | 8K |
| S2982G-24T-POE-E | 56 Gbps | 41,7 Mpps | 8K |

Resilience

For organizing resilient networks, support for standard protocols STP/RSTP/MSTP as well as ERPS (G.8032) including ERPS + CFM is implemented.

Link aggregation functionality using LACP or static aggregation allows combining up to 8 ports into one logical interface, increasing the bandwidth ability and resilience at the data link level.

PoE+ support

The SNR-S2982G series switches support PoE 802.3af и PoE+ 802.3at standards with a smart capacity management. The PoE technology reduces cost of ownership and makes network maintenance easier. It allows to supply with power directly from switch different types of equipment such as WiFi hotspots, IP/Video phones, thin clients and others.

| Model | Number of PoE ports | Total PoE capacity |
|------------------|---------------------|--------------------|
| S2982G-24T-POE | 24 | 185 Watt |
| S2982G-24T-POE-E | 24 | 370 Watt |

Multicast management

Switches of SNR-S2982G series have all the necessary functionality for multicast control on Layer 2: IGMP Snooping, MVR, IGMP packet filtering, and multicast filtering. It allows to organize an efficient transporting of multicast-based services, such as IPTV.

Quality of Service (QoS)

Support for 8 hardware queues per port allows creating flexible service policies for different types of traffic, thus ensuring high quality of sensitive services under high load conditions. Traffic can be classified by field values in L2-L4 headers, including CoS, DSCP, VLAN ID, IP/MAC addresses, and TCP/UDP ports.

| Model | Multicast group | Queues per Port | ACL |
|--------|-----------------|-----------------|------|
| S2982G | 500 | 8 | 1408 |

Security

The S2982G series switches provide a wide range of security features for both service providers and enterprise networks. Hardware Access Control Lists (ACLs) can filter traffic by L2-L4 header fields without performance brake. MAC-IP-Port binding functionality helps to protect the network from IP/MAC address spoofing by clients. Support for 802.1x and MAB protocols provides authentication of devices connected to the network.

Dimensions and and power supply

The SNR-S2982G series switches include SNR-S2982G-8T-RPS, SNR-S2982G-24T-RPS and SNR-S2982G-24TE-RPS models with RPS-slot for DC 12V backup power supply, and SNR-S2982G-8T-UPS, SNR-S2982G-24T-UPS and SNR-S2982G-24TE-UPS models with a built-in 12V battery discharge/charge controller with 5-20Ah capacity.

| Model | Dimension | Weight (Brutto) | Power Consumption | Cooling | Power Supply |
|------------------|-------------------|-----------------|-------------------|---------|-----------------------|
| S2982G-8T | 266 x 44 x 161 mm | | 22 Watt | Passive | 100-240AC |
| S2982G-8T-DC | 266 x 44 x 161 mm | | 22 Watt | Passive | 100-240AC, 48-56V DC |
| S2982G-8T-UPS | 266 x 44 x 161 mm | | 22 Watt | Passive | 100-240AC, 12V DC+UPS |
| S2982G-8T-RPS | 266 x 44 x 161 mm | | 22 Watt | Passive | 100-240AC, 12V DC |
| S2982G-24T | 442 x 44 x 230 mm | 3,5 kg | 22 Watt | Passive | 100-240AC |
| S2982G-24TE | 442 x 44 x 160 mm | | 25 Watt | Passive | 100-240AC |
| S2982G-24TE R2.0 | 442 x 44 x 170 mm | | 25 Watt | Passive | 100-240AC |
| S2982G-24TE-DC | 442 x 44 x 160 mm | | 25 Watt | Passive | 100-240AC, 18-48V DC |
| S2982G-24TE-UPS | 442 x 44 x 160 mm | | 25 Watt | Passive | 100-240AC, 12V DC+UPS |
| S2982G-24TE-RPS | 442 x 44 x 160 mm | | 25 Watt | Passive | 100-240AC, 12V DC |
| S2982G-24T-POE | 442 x 44 x 260 mm | 5 kg | 210 Watt | Active | 100-240AC |

Operational convenience

S2982G series SNR switches work under the control SNR system NOS (Networking Operating System) with the typical syntax CLI and SNMP MIB for all SNR switches. The system supports all the necessary functionality of the Enterprise/ISP level for building modern data networks and has extensive management and monitoring capabilities via CLI, Web and SNMP.

Technical Brief

Switching type

- Store-and-Forward

MAC address table

- 8K entries

MAC address table features

- Limiting max number MAC addresses on a port, VLAN
- Static MAC addresses
- MAC-notification
- Disabling MAC address learning on a port, VLAN

Flow Control

- 802.3x Flow Control

Jumbo frame

- 10 Kbytes

Flash memory size

- 32 Mbytes

RAM size

- 128 Mbytes

Ring Protection

- ERPS ITU-T G.8032
- MRPP
- Fast Link
- ULPP
- ULSM

Spanning Tree

- 802.1D STP
- 802.1W RSTP
- 802.1S MSTP
- Root/BPDU Guard
- BPDU Forwarding

Loopback Detection

- Per-port
- Per-port-per-vlan
- Action shutdown/block

Port Aggregation

- LACP 802.3ad / 802.1ax
- Up to 8 groups per switch /up to 8 ports in group
- Load balance src/dst MAC, src/dst IP, dst-src-MAC/IP, dst-src-MAC-IP, ingress-port

Traffic Mirroring

- 4 groups
- One-to-one / Many-to-one
- Flow-based (ACL)
- RSPAN VLAN

VLAN

- 4094 VLAN
- Port-based VLAN
- IEEE 802.1Q
- Private VLAN
- Protocol VLAN
- Voice VLAN
- MAC VLAN
- Multicast VLAN
- VLAN Trunking
- VLAN Translation
- GVRP

Multicast

- 500 IGMP groups
- IGMP v1/v2/v3 Snooping
- IGMP Fast Leave
- IGMP Snooping Immediately Leave
- IGMP Snooping Querier
- Multicast VLAN Registration (MVR)
- Multicast Source/Destination Control
- Illegal source detection
- Multicast policy
- Multicast Filter
- IGMP Snooping RADIUS Authentication
- MLD v1/v2 Snooping, MLD Snooping Immediately Leave

QoS

- 8 queues per port
- Bandwidth Control
- Traffic classification per port, ACL (L2-L4), VLAN ID, CoS, ToS, DSCP, IPv6 Flow Label
- Per port/VLAN policing
- Remarking DSCP, CoS/802.1p, Precedence, ToS
- SP, WRR, SWRR, DWRR

ACL

- 1408 ACL
- Per port/VLAN
- Filtering based on: switch port, VLAN ID, 802.1p priority, MAC address, EtherType, IPv4 / IPv6 address, IPv6 traffic class, IPv6 flow label, ToS, DSCP, protocol type, TCP / UDP port number, CPU Interface Filtering
- Time Range ACL.
- Userdefined ACL
- ACL statistics

Security

- SSH v1/v2
- SSL v1/v2/v3
- MAC binding
- MAC filter
- Limiting the number of MAC addresses on a port
- Limiting Broadcast/Multicast/ Unicast packets on a port by Kbps
- Access Management (IP-MAC-Port Binding)
- Port Security
- Port Isolation
- ARP Guard
- ARP Binding
- ARP/ND Limit
- Anti-ARP-Scan
- Dynamic ARP inspection (DAI)
- RA Snooping
- ND Snooping
- SAVI
- CPU protection
- IEEE 802.3az (Energy Efficient Ethernet),
- CE, RoHS
- CB, cUL, LVD

DHCP

- IPv4/IPv6 DHCP Client/Relay
- Option 82, Option 37/38
- IPv4/IPv6 DHCP Snooping/ Server

Management and monitoring

- RADIUS, TACACS+
- 802.1x (host/port based access control, Dynamic VLAN, Guest VLAN, Auto VLAN)
- MAC Authentication Bypass
- Up to 15 levels of user privileges
- Passing privilege levels via RADIUS/TACACS+
- Xmodem/TFTP/FTP, CLI, Telnet, Console
- Web/SSL, SSH (IPv4/IPv6)
- SNMPv1/v2c/v3, SNMP Traps, Public & Private MIB interface
- RMON 1,2,3,9
- Bootp/DHCP Client
- Autoprovisioning
- PPPoE Intermediate agent
- Debug commands
- Password recovery
- Password encryption
- Backup and restore settings
- Ping, Traceroute
- Syslog (IPv4/IPv6)
- Sntp/NTP (IPv4/IPv6)
- Dual IMG, Multiple Configuration Files
- Port/CPU Mirror, RSPAN
- OAM, VCT, DDM
- Multiple IP Interface
- ULDP (like Cisco UDLD), LLDP/ LLDP MED
- Management of Indication

IPv6

- ICMPv6
- NDP
- SNMP over IPv6
- HTTP over IPv6
- IPv6 ping/traceroute
- IPv6 Telnet IPv6 Syslog
- RFC1981 Path MTU Discovery
- RFC2460 IPv6
- RFC2461 4861 Neighbor Discovery
- RFC2462,4862 IPv6 Stateless Address Auto-configuration
- RFC2464 IPv6 Neighbor over Ethernet and definition
- RFC3515, 4291 IP Version 6 Addressing Architecture
- RFC2893, 4213 IPv4/IPv6 Dual-stack
- IPv6 Ready Logo Phase 2

Logging

- RAM logging
- Flash logging
- Logging to Syslog server
- Configuring the logging level
- Logging executed command

QinQ

- Port-based/Selective QinQ
- Flexible QinQ

Humidity

- 5%-95%, no condensation

Operating temperature

- 0C ~ 50C

Storage temperature

- -40C ~ 70C

Surge protection

- Up to 4 kV

MBTF

- >800000 hours

Ordering information

| Model | Description |
|----------------------|--|
| SNR-S2982G-8T | L2 Managed Switch, 8 ports 10/100/1000Base-T, 2 ports 100/1000Base-X (SFP). Power: 220V AC |
| SNR-S2982G-8T-DC | L2 Managed Switch, 8 ports 10/100/1000Base-T, 2 ports 100/1000Base-X (SFP). Power: 220V AC |
| SNR-S2982G-8T-UPS | L2 Managed Switch, 8 ports 10/100/1000Base-T, 2 ports 100/1000Base-X (SFP). Power: 220V AC, 12V battery connector |
| SNR-S2982G-8T-RPS | L2 Managed Switch, 8 ports 10/100/1000Base-T, 2 ports 100/1000Base-X (SFP). Power: 220V AC, RPS 12V DC |
| SNR-S2982G-24T | L2 Managed Switch, 24 ports 10/100/1000Base-T, 4 ports 100/1000Base-X (SFP). Power: 220V AC |
| SNR-S2982G-24TE | L2 Managed Switch, 24 ports 10/100/1000Base-T, 4 ports 100/1000Base-X (SFP). Power: 220V AC |
| SNR-S2982G-24TE-DC | L2 Managed Switch, 24 ports 10/100/1000Base-T, 4 ports 100/1000Base-X (SFP). Power: 220V AC |
| SNR-S2982G-24TE-UPS | L2 Managed Switch 24 ports 10/100/1000Base-T, 4 ports 100/1000Base-X (SFP). Power: 220V AC, 12V battery connector |
| SNR-S2982G-24TE-RPS | L2 Managed Switch, 24 ports 10/100/1000Base-T, 4 ports 100/1000Base-X (SFP). Power: 220V AC, RPS 12V DC |
| SNR-S2982G-24T-POE | L2 Managed PoE Switch, 24 ports x 10/100/1000Base-T, 4 ports 100/1000Base-X SFP. Power: 220V AC. POE 185W |
| SNR-S2982G-24T-POE-E | L2 Managed PoE Switch, 24 ports 10/100/1000Base-T, 4 ports 100/1000Base-X SFP. Power: 220V AC. POE 370W |

NAG LLC

Office M-03, Al Garhoud Business center Building. UAE, Dubai

Website: snr.global

Tel: +971 0 42599967

Technical

e-mail: sales@snr.global

support portal: snr.support