

EMR3.0 Platform operation

User Guide



1. Product Introduction

This is the Operation Guide for EMR3.0 Platform. It is used for basic configuration.

Enhanced Multimedia Router (EMR) is a standard platform on which users can realize all Digital TV head end functions. It is one rack-unit (1-RU) signal processing platform with flexible card-insertion structure (6 slots). EMR can support "Any input" (DVB-S/S2/ASI/IP/DS3/E3 and etc.), "Any processing" (encoding/decoding/multiplexing/scrambling, and etc.) and "Any output" (DVB-S/S2/ASI/IP/DS3/E3 etc)".

Interface on front panel:

- "CTRL": network management control interface.
- "CA": CA scrambling interface.
- "GbE1-GbE4": GbE SFP module interface for data.

Contact Us

SUMAVISION TECHNOLOGIES CO., LTD

Tel: +86-10-82345859/69/70

Fax: +86 10 62978800

Email: worldmarket@sumavision.com

Website: www.sumavision.com

Sumavision Confidential

2. Web Manager System parameter configure



Step ①: Open the web browser (IE, Chrome, Firefox...) and enter IP address of EMR (check it from front panel by long pressing the button near LCD) in the address bar, then username and password will be needed, the default username is **Admin**, default password is **sumavisionrd**;

Step ②: Choose a language, for example **English**;

Contact Us

SUMAVISION TECHNOLOGIES CO., LTD

Tel: +86-10-82345859/69/70

Fax: +86 10 62978800

Email: worldmarket@sumavision.com

Website: www.sumavision.com

Sumavision Confidential



Step ③ : Click **General**, all general setting options are shown on the left side of the web page;

Step ④ : Click **Network**, the network parameters are shown on the right of the web page; first we need to configure the IP address of EMR3.0.

Step ⑤ : enter values in "IP address"、"Subnet Mask"、"Gateway"，and "DHCP" select as "Disable"; ensure that there is no IP conflict in the network.

Contact Us

SUMAVISION TECHNOLOGIES CO., LTD

Tel: +86-10-82345859/69/70

Fax: +86 10 62978800

Email: worldmarket@sumavision.com

Website: www.sumavision.com

Sumavision Confidential

Sumavision EMR Enhanced Multimedia Router

Home Logout Reboot

Logged in as: Admin

General List

- Network
- Clock
- TDT/TOT
- PSI/SI
- Alarm
- Log
- License
- Version
- Misc
- Permission
- Configuration

PSI/SI

PSI/SI Refresh Mode	Auto
PAT/PMT/CAT Refresh Interval (s)	4
NITa/SDTa Refresh Interval (s)	4
NITo/SDTo/BAT Refresh Interval (s)	6

Step ⑥ : Go to "General"->"PSI/SI" we can get the information of PSI/SI configuration on the right of web page

Step ⑦ : Select "PSI/SI Refresh Mode" as Auto or Manual and you can change the tables Refresh Interval time, default setting is ok.

Contact Us

SUMAVISION TECHNOLOGIES CO., LTD

Tel: +86-10-82345859/69/70

Fax: +86 10 62978800

Email: worldmarket@sumavision.com

Website: www.sumavision.com

Sumavision Confidential



Step ⑧ : Go to "General" ->"Misc"

Step ⑨ :select format of service ID and PID as Decimal or

Hexadecimal that you required, which it can control the ID and PID display format in EMR

Step ⑩ : Input PSI/SI Display option that you can select it as off or on. Other options leave it as default setting.

Step ⑪ :CA Server option showing the Scrambler card IP, you can

use this IP to login scrambler card

Contact Us

SUMAVISION TECHNOLOGIES CO., LTD

Tel: +86-10-82345859/69/70

Fax: +86 10 62978800

Email: worldmarket@sumavision.com

Website: www.sumavision.com

Sumavision Confidential

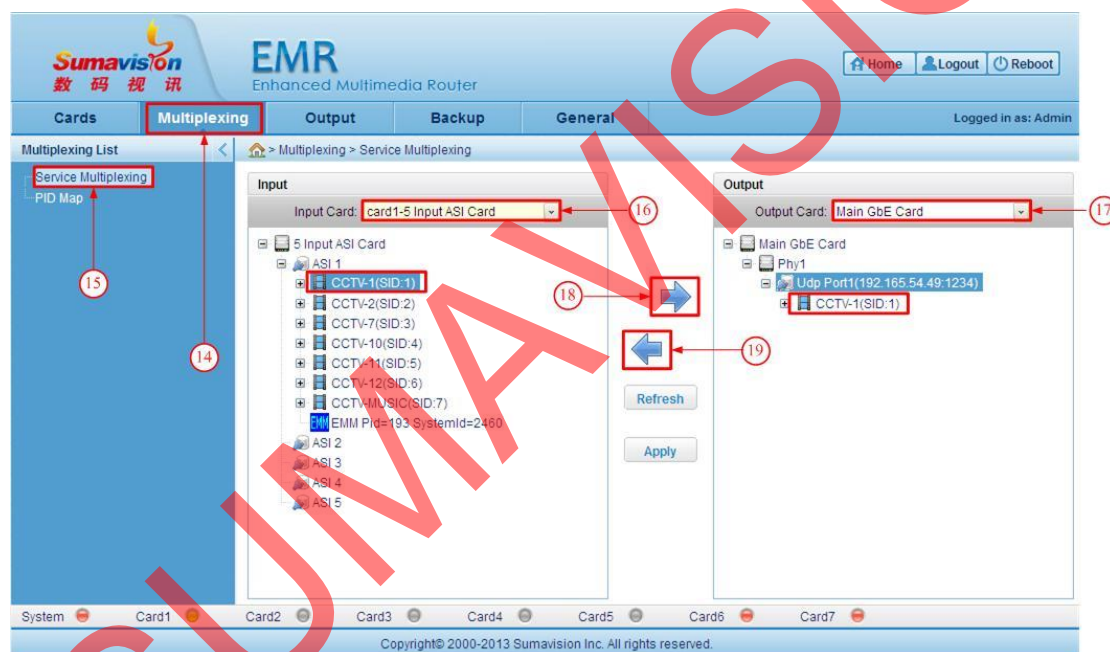


The EMR3.0 platform basic operation is multiplexing; there are many types of cards. So, we take the 5-input-ASI-card and Main GbE card for example

Step ⑫: go to "Cards"->"Card1-5 Input ASI Card" -> "port1"

-> "Monitor"

Step ⑬: we can check the current input status if normal or not.



Step ⑭: Click the **Multiplexing** button;


Step ⑮: Click **Service Multiplexing**;




Step 16: select the input card;(Card1-5 Input ASI Card for example)

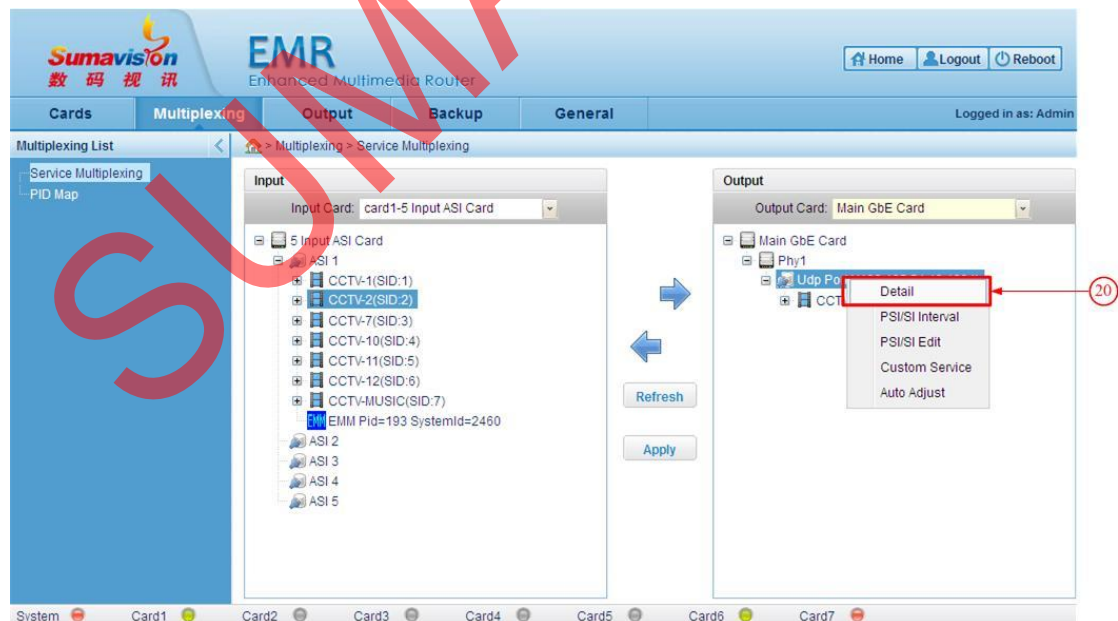
Step 17: select the output card;(Main GbE Card for example);

Step 18: The program after inputting is shown under **ASI 1**, first choose the program on input side (CCTV-1 as an example), and then choose the UdP Port which is for output port (UdP Port1 as an

example), click  program will be multiplexed from Card1-5 Input ASI Card port 1 to Main GbE Card Port 1 IP output;

Step 19: if you want to remove the program from output side, you can first choose this program and then click , which the program will be removed from right side;

Apply to save your configuration



Contact Us

SUMAVISION TECHNOLOGIES CO., LTD

Tel: +86-10-82345859/69/70

Fax: +86 10 62978800

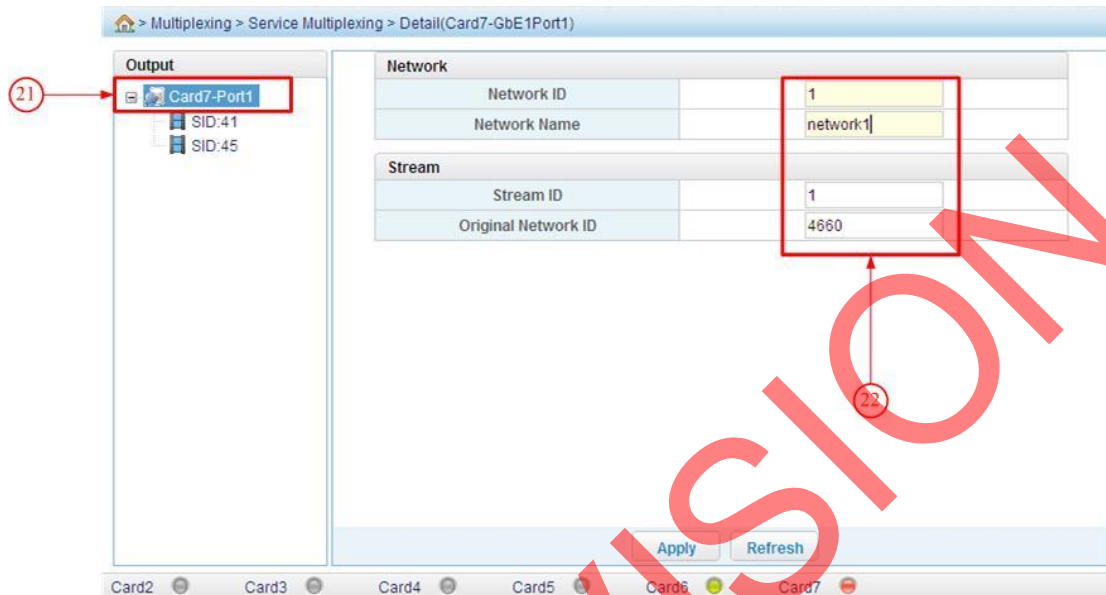
Email: worldmarket@sumavision.com

Website: www.sumavision.com

Sumavision Confidential

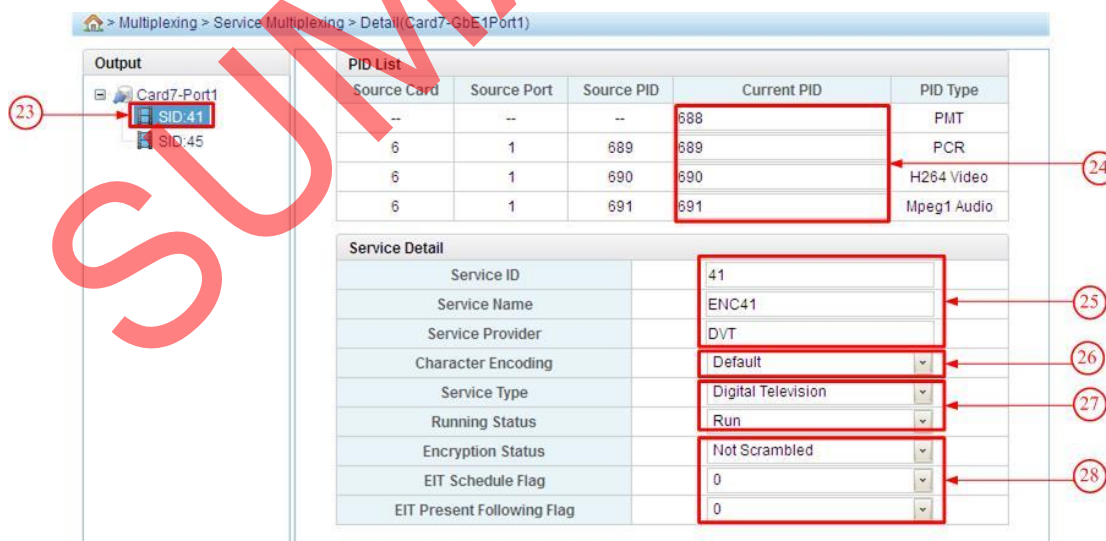


Step 20: choose the output port (UdP Port) then press right key, click **Detail**, you will see the following page



Step 21: click **Card7-Port1**

Step 22: you can modify the network ID、network Name 、Stream ID、 Original Network ID as your requirement;



Contact Us

SUMAVISION TECHNOLOGIES CO., LTD

Tel: +86-10-82345859/69/70

Fax: +86 10 62978800

Email: worldmarket@sumavision.com

Website: www.sumavision.com

Sumavision Confidential



Step 23: click **SID 41**, 41 is the service id, here is only as an example;

Step 24: then you can modify the PMT PID、PCR PID、Video PID、audio PID and so on; the format of PID value depends on the PID display setting at step ⑩

Step 25: you can modify the Service ID、Service Name of program;

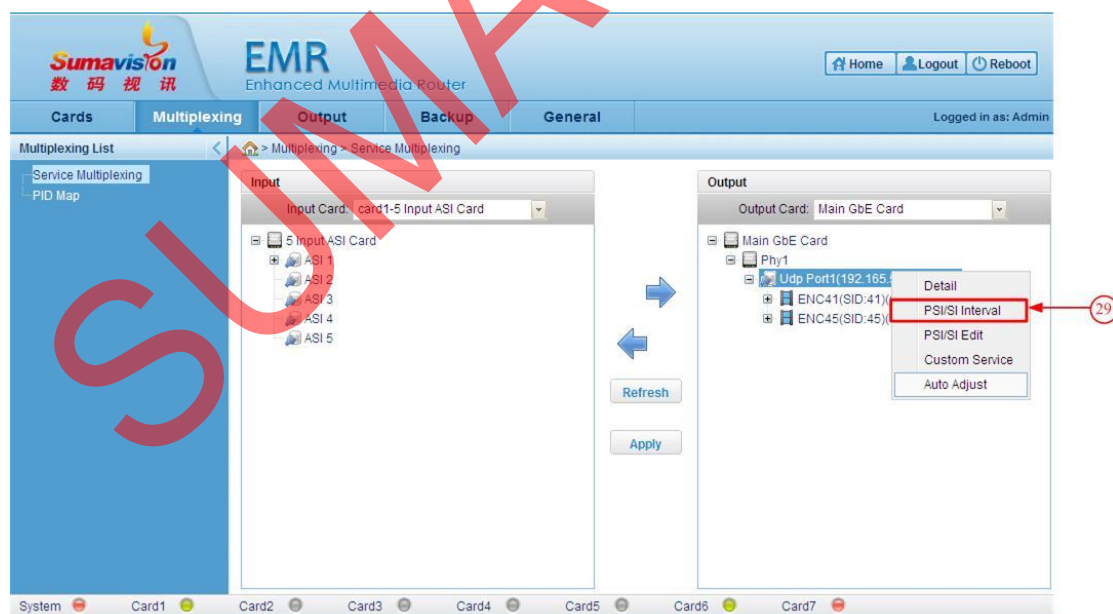
Step 26: select it as "Default"

Step 27: select the Service Type according to the actual situation

Step 28: select it as default setting

After finished the configuration, click "Apply" to save the setting.

Click **Service Multiplexing** option on the left of webpage to return;



Contact Us

SUMAVISION TECHNOLOGIES CO., LTD

Tel: +86-10-82345859/69/70

Fax: +86 10 62978800

Email: worldmarket@sumavision.com

Website: www.sumavision.com

Sumavision Confidential



Step 29: choose the output port (Udp Port) then press right key, click **PSI/SI Interval**, you will see the following page:

PSI/SI Interval			
	Apply	Refresh	Default interval
PAT Interval(ms)	300		<input checked="" type="checkbox"/>
PMT Interval(ms)	300		<input checked="" type="checkbox"/>
CAT Interval(ms)	300		<input checked="" type="checkbox"/>
NITa Interval(ms)	1000		<input checked="" type="checkbox"/>
NITo Interval(ms)	1000		<input checked="" type="checkbox"/>
SDTa Interval(ms)	1000		<input checked="" type="checkbox"/>
SDTo Interval(ms)	1000		<input checked="" type="checkbox"/>
BAT Interval(ms)	1000		<input checked="" type="checkbox"/>
TDT/TOT Table Send	On		

Step 30: here you can configure PSI/SI sending interval, which the PSI/SI is generated by EMR, in case of conflict, if you have EPG system already or you don't want to send PSI/SI, you can select parts/all of tables sending interval time as 0;

Step 31: you can select "TDT/TOT tables send" as on or off.

Contact Us

SUMAVISION TECHNOLOGIES CO., LTD

Tel: +86-10-82345859/69/70

Fax: +86 10 62978800

Email: worldmarket@sumavision.com

Website: www.sumavision.com

Sumavision Confidential



Step 32: go to **"Multiplexing"**-> **"PID Map"** option;

Step 33: click "Add" button;

Step 34: now we can do PID mapping, first we need to select the input card;

Step 35: then select the input port of this card

Step 36: then enter the original PID value, which the format of PID depends on the PID display setting at step ⑩

Step 37: select the output card;

Step 38: then select the output port of this card;

Step 39: enter the destination PID value, which the format of PID depends on the PID display setting at step ⑩

Contact Us

SUMAVISION TECHNOLOGIES CO., LTD

Tel: +86-10-82345859/69/70



Fax: +86 10 62978800

Email: worldmarket@sumavision.com

Website: www.sumavision.com

Sumavision Confidential

Step 40: press "Apply" to save the configuration, and then if you want to edit the PID Map list that you have added, you can choose

 or  to modify or to delete

SUMAVISION

Contact Us

SUMAVISION TECHNOLOGIES CO., LTD

Tel: +86-10-82345859/69/70

Fax: +86 10 62978800

Email: worldmarket@sumavision.com

Website: www.sumavision.com

Sumavision Confidential