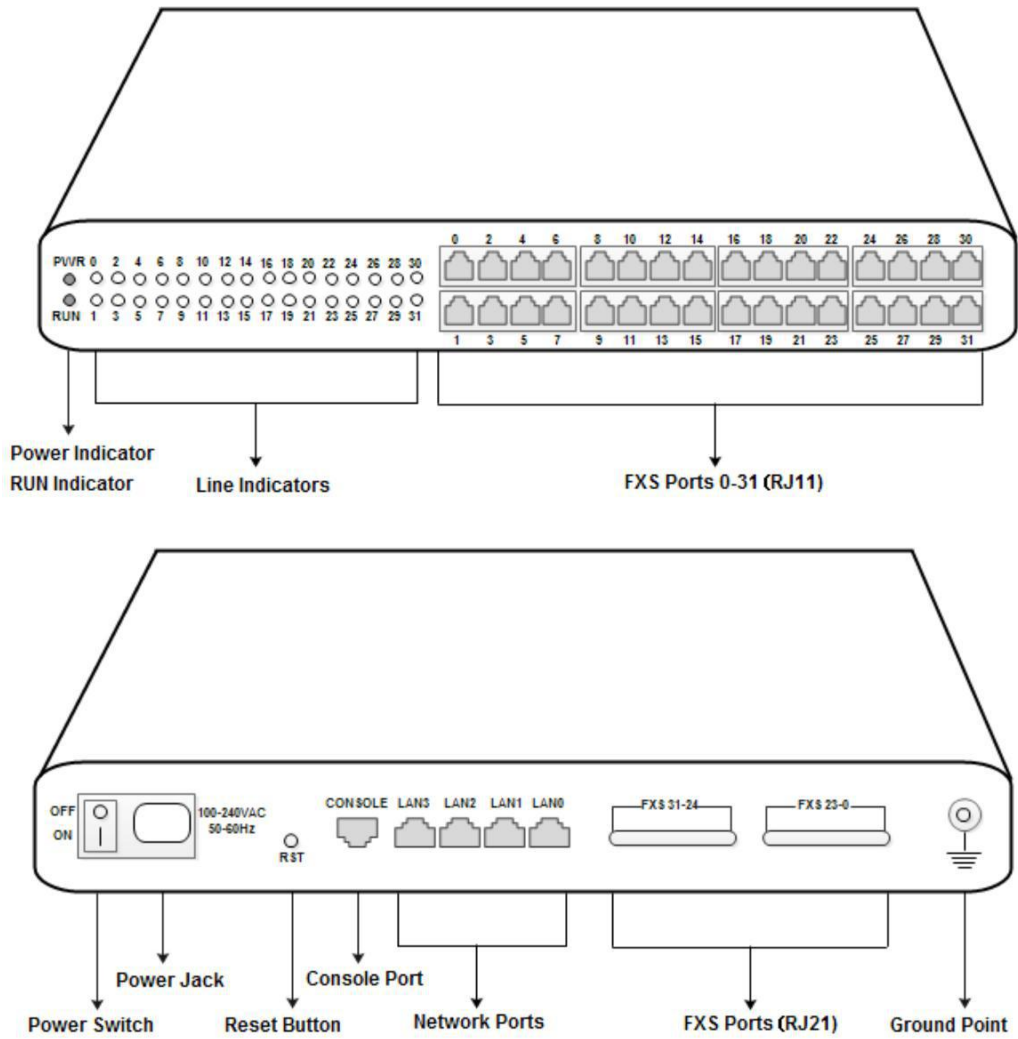


1 VG2000-32S Appearance



2 Number of Ports

Port Type Gateway	Console	LAN	FXS (RJ11)	FXS (RJ21)	FXS (RJ45)
DAG2000-32S	1	4	32	2	0

3 Description of Indicators

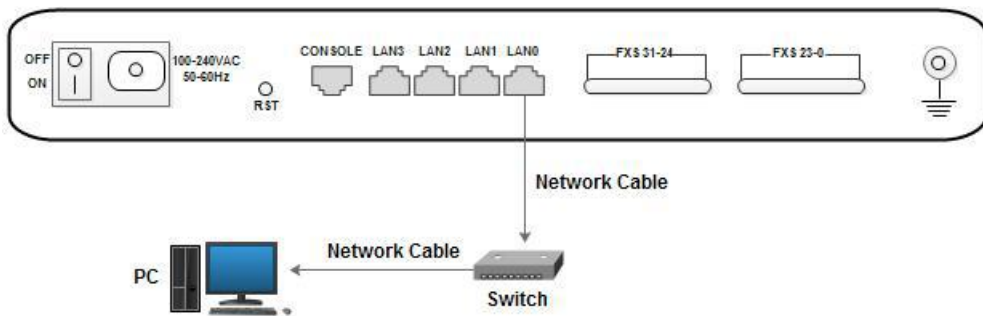
Indicator	Name	Status	Description
PWR	Power Indicator	On Green	The gateway is powered on.
		On Dull	There is no power supply or power supply is abnormal.
RUN	Running Indicator	Slow Flash	The gateway is running properly.
		Quick Flash	SIP account is registered successfully.
		No Flash/On Dull	The gateway is running improperly.
FXS	Line Indicators	On Green	FXS port is currently occupied by a call.
		On Dull	FXS port is idle or FXS port is faulty.
WAN/LAN	Indicator for Network Link	On Green with Flash	The gateway is properly connected to network.
		On Dull	The gateway is not connected to network or the connection is improper.
	Indicator for Network Speed	On Green	Network speed is 100Mbps.
		On Dull	Network speed is 10Mbps.

4 Installation Attentions

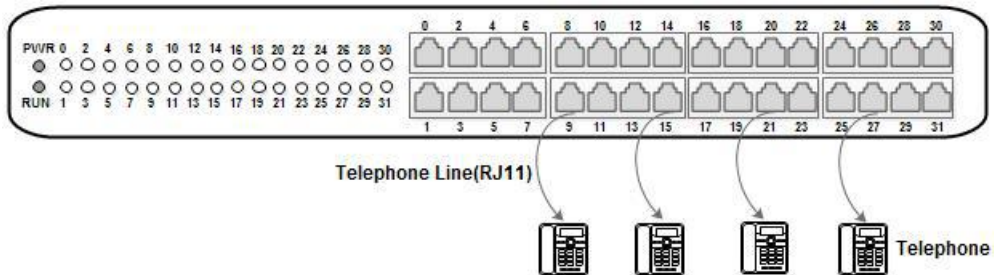
1. Please separate power cables with telephone lines so as to reduce the interference with telephone calls.
2. The adapter of VG2000-32S accepts AC input voltage of 100-240V. Please ensure stable and safe power supply.
3. To guarantee stabilized running of VG2000-32S, please ensure there is enough network bandwidth.
4. To ensure the gateway can work normally, you'd better install the gateway in a device room where temperature and humidity are appropriate.
5. You'd better place the gateway on a flat surface or a device cabinet. To effectively maximize heat dissipation, do not pile up the gateway with other devices .

5 Connection Instruction

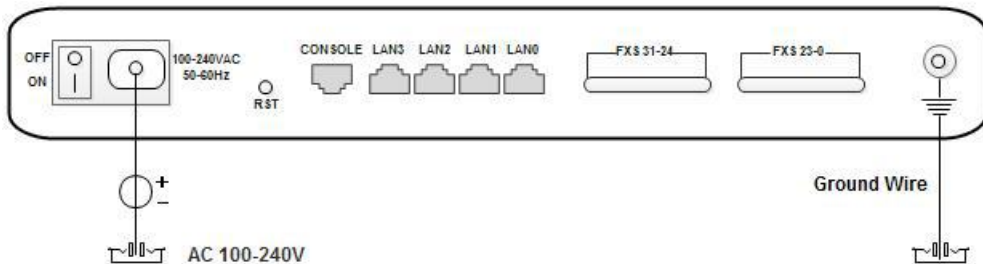
Network Connection



Telephone Connection



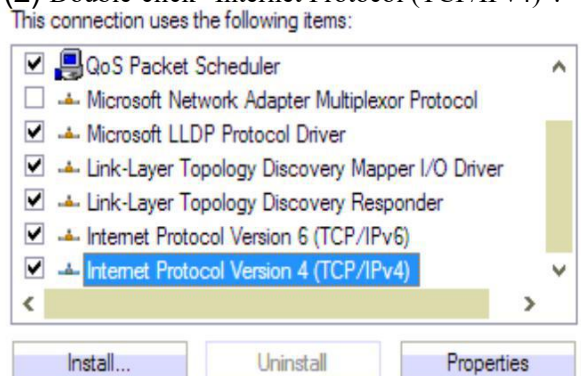
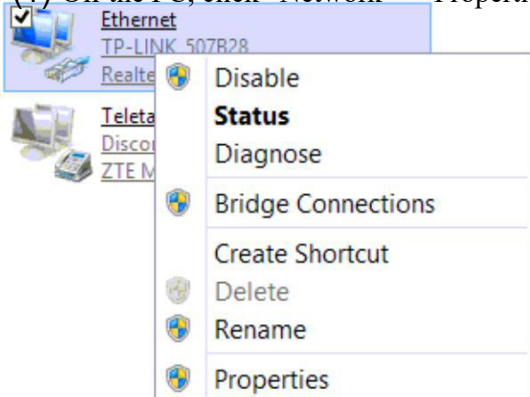
Power Connection & Grounding



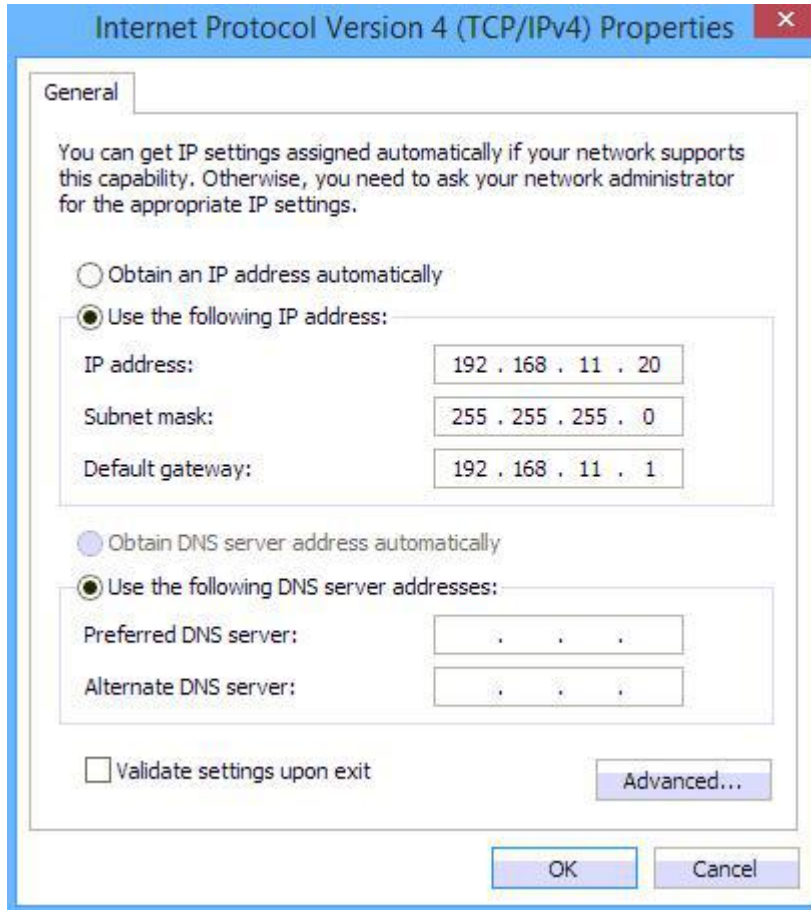
6 Modify PC's IP Address

Modify the IP address of PC to make it at the same network segment with the VG2000-32S gateway, since the default IP address of the gateway is 192.168.11.1.

- (1) On the PC, click “Network Properties”. (2) Double-click “Internet Protocol (TCP/IPv4)”.




(3) Select “Use following IP address”, and then enter an available IP address which is at the same network segment with “192.168.11.1”.



7 Log into VG2000-32S

Open a web browser and enter the IP address of VG2000-32S (the default IP is 192.168.11.1). Then the login GUI will be displayed. Both the default username and password are admin.

8 Modify IP Address of VG2000-32S

If you want to modify the IP address of VG2000-32S, please click “Network  Local Network” in the navigation tree on the left, and then input new IP address and DNS server address on the displayed interface.

9 Configure SIP Server Information

Log into VG2000-32S, and then click **SIP Server** in the navigation tree and then enter the address of the SIP server which is to be registered. Click **Save** in the last.

SIP Server

Primary SIP Server

Primary SIP Server Address	<input type="text" value="172.16.95.110"/>
Primary SIP Server Port (Default: 5060)	<input type="text" value="5060"/>
Registration Expires (Default: 1800)	<input type="text" value="1800"/> s
Heartbeat	<input type="checkbox"/> Enable

Click **Port** in the navigation tree on the left, and then click **Add**. Input the SIP account and authentication password assigned by the SIP server.

Port Add

Port	<input type="text" value="1"/>
Disable Port	<input type="checkbox"/>
Registration	<input checked="" type="checkbox"/> Enable
Primary Display Name	<input type="text" value="10001"/>
Primary SIP User ID	<input type="text" value="10001"/>
Primary Authenticate ID	<input type="text" value="10001"/>
Primary Authenticate Password	<input type="text" value="10001"/>
Secondary Display Name	<input type="text"/>
Secondary SIP User ID	<input type="text"/>
Secondary Authenticate ID	<input type="text"/>
Secondary Authenticate Password	<input type="text"/>

Click **Save** and then restart the VG2000-32S gateway for the new configurations to take effect.

10 Basic Operations

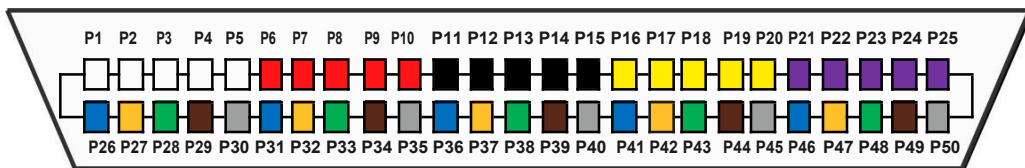
- Dial *158# to query the IP address of LAN port of VG2000-32S;
- Dial *114# to query the telephone number of a FXS port;
- Dial *165*000000# to restore default IP address, username and password;
- Restore factory default settings: (1) dial *166*000000#; (2) Press the RST button for 7 seconds; (3) Log into the gateway and then click “Tools” → “Factory Reset”. Then click **Apply**, and restart the gateway.
- Dial *111# to restart VG2000-32S.

11 Detailed Configuration & Parameter Explanation

This document only provides instructions for quick installation and basic configuration. For detailed explanation of functions and parameters, please make reference to VG2000-16S VoIP Gateway User Manual, or ask for online technical support.

12 RJ21 Wire Sequence

VG2000-32S is equipped with RJ21 interface as FXS port. RJ21 interface has 25 pair of wires, with the 25th pair of wire vacant. That means one RJ21 interface can output 24 calls. The internal wire sequence of RJ21 interface is as follows:



Call No.	0		1		2		3		4	
Colour	White	Blue	White	Orange	White	Green	White	Brown	White	Slate
Pin No.	P1	P26	P2	P27	P3	P28	P4	P29	P5	P30
Call No.	5		6		7		8		9	
Colour	Red	Blue	Red	Orange	Red	Green	Red	Brown	Red	Slate
Pin No.	P6	P31	P7	P32	P8	P33	P9	P34	P10	P35
Call No.	10		11		12		13		14	
Colour	Black	Blue	Black	Orange	Black	Green	Black	Brown	Black	Slate
Pin No.	P11	P36	P12	P37	P13	P38	P14	P39	P15	P40
Call No.	15		16		17		18		19	
Colour	Yellow	Blue	Yellow	Orange	Yellow	Green	Yellow	Brown	Yellow	Slate
Pin No.	P16	P41	P17	P42	P18	P43	P19	P44	P20	P45
Call No.	20		21		22		23		24	
Colour	Violet	Blue	Violet	Orange	Violet	Green	Violet	Brown	Violet	Slate
Pin No.	P21	P46	P22	P47	P23	P48	P24	P49	P25	P50