

Thanks for Choosing SNR-VG-1000-8S VoIP Gateway!

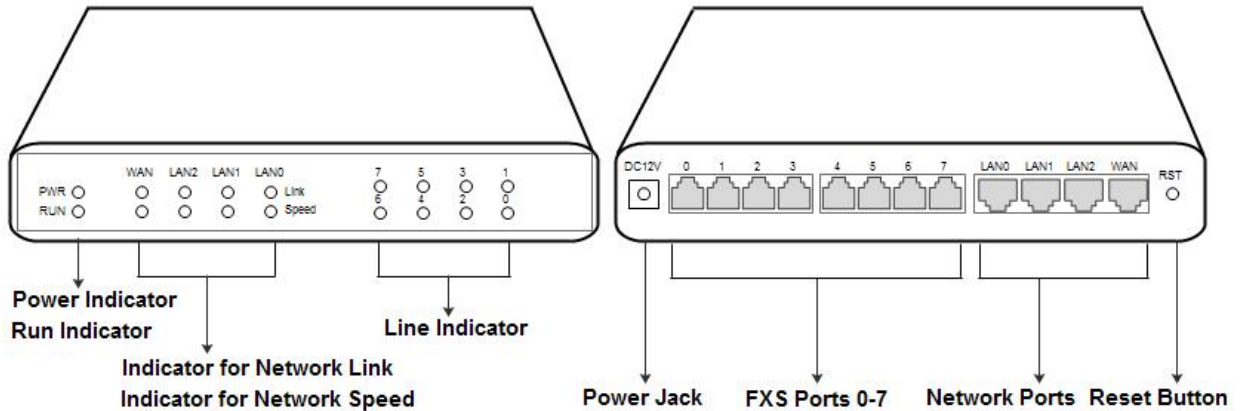
Please read this installation guide carefully before install the gateway. If you need any technical support, please contact us.

Tel: +7(343)3799838

Mail: support@nag.ru

Website: support.nag.ru

1 SNR-VG-1000-8S Appearance



2 Number of Ports

Port Type Gateway	WAN	LAN	FXS (RJ11)	FXS (RJ21)	FXS (RJ45)
SNR-VG-1000-8S	1	3	8	0	0

3 Description of Indicators

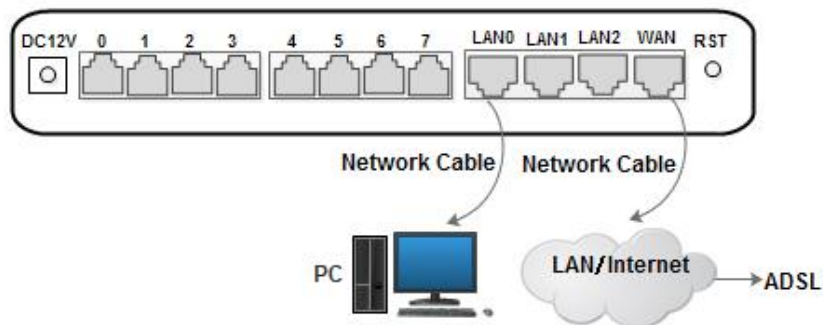
Indicator	Name	Status	Description
PWR	Power Indicator	On Green	The gateway is powered on.
		On Dull	There is no power supply or power supply is abnormal.
RUN	Running Indicator	Slow Flash	The gateway is running properly.
		Quick Flash	SIP account is registered successfully.
		No Flash/On Dull	The gateway is running improperly.
FXS	Line Indicators	On Green	FXS port is currently occupied by a call.
		On Dull	FXS port is idle or FXS port is faulty.
WAN/LAN	Indicator for Network Link	On Green with Flash	The gateway is properly connected to network.
		On Dull	The gateway is not connected to network or the connection is improper.
	Indicator for Network Speed	On Green	Network speed is 100Mbps.
		On Dull	Network speed is 10Mbps.

4 Installation Attentions

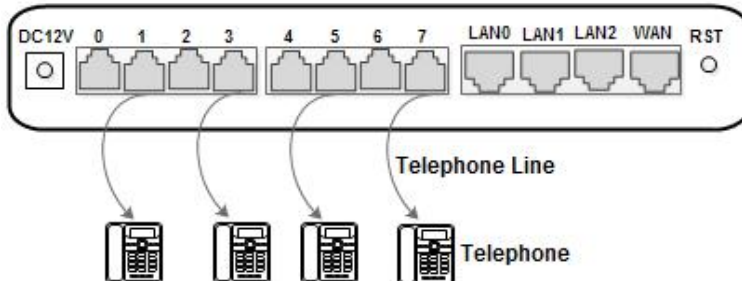
1. Please separate power cables with telephone lines so as to reduce the interference with telephone calls.
2. The adapter of SNR-VG-1000-8S accepts DC input voltage of 12V. Please ensure stable and safe power supply.
3. To guarantee stabilized running of SNR-VG-1000-8S, please ensure there is enough network bandwidth.
4. To ensure the gateway can work normally, you'd better install the gateway in a device room where temperature and humidity are appropriate.
5. You'd better place the gateway on a flat surface or a device cabinet. To effectively maximize heat dissipation, do not pile up the gateway with other devices.

5 Connection Instruction

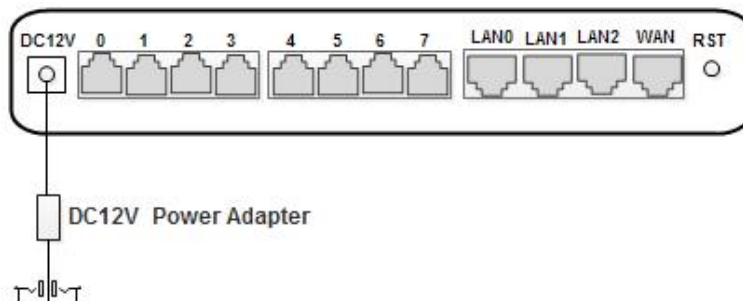
Network Connection



Telephone Connection



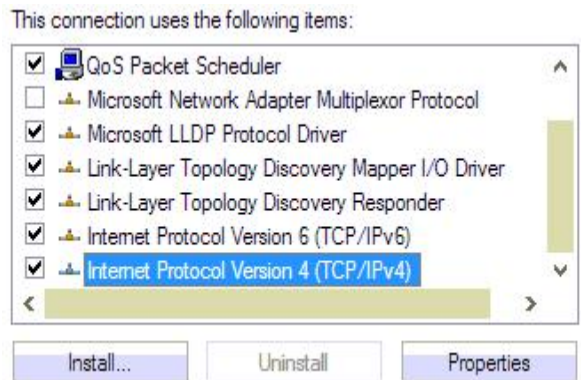
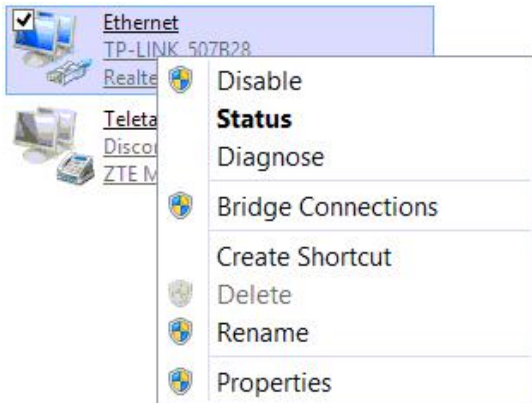
Power Connection



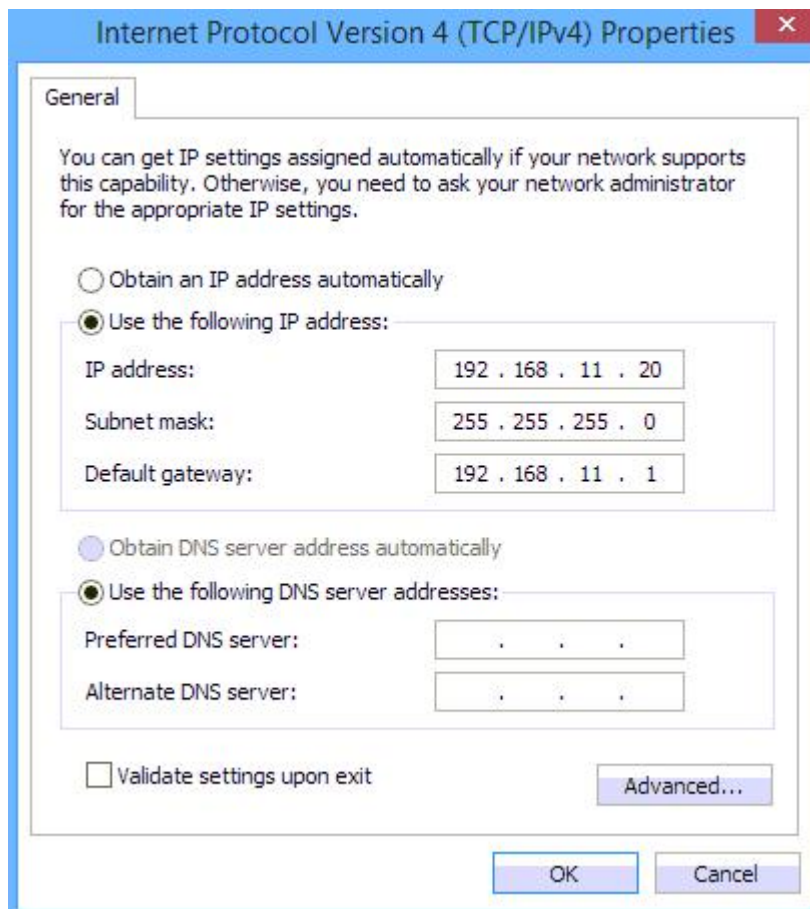
6 Modify PC's IP Address

Modify the IP address of PC to make it at the same network segment with the SNR-VG-1000-8S gateway, since the default IP address of the gateway is 192.168.11.1.

- (1) On the PC, click “Network → Properties”. (2) Double-click “Internet Protocol (TCP/IPv4)”.



- (3) Select “Use following IP address”, and then enter an available IP address which is at the same network segment with “192.168.11.1”.



7 Log into SNR-VG-1000-8S

Open a web browser and enter the IP address of SNR-VG-1000-8S (the default IP is 192.168.11.1). Then the login GUI will be displayed. Both the default username and password are admin.

8 Modify IP Address of SNR-VG-1000-8S

If you want to modify the IP address of SNR-VG-1000-8S, please click “Network → Local Network” in the navigation tree on the left, and then input new IP address and DNS server address on the displayed interface.

9 Configure SIP Server Information

Log into SNR-VG-1000-8S, and then click **SIP Server** in the navigation tree and then enter the address of the SIP server which is to be registered. Click **Save** in the last.

SIP Server	
Primary SIP Server	
Primary SIP Server Address	172.16.95.110
Primary SIP Server Port (Default: 5060)	5060
Registration Expires (Default: 1800)	1800 s
Heartbeat	<input checked="" type="checkbox"/> Enable

Click **Port** in the navigation tree on the left, and then click **Add**. Input the SIP account and authentication password assigned by the SIP server.

Port Add	
Port	1
Disable Port	<input type="checkbox"/>
Registration	<input checked="" type="checkbox"/> Enable
Primary Display Name	10001
Primary SIP User ID	10001
Primary Authenticate ID	10001
Primary Authenticate Password	10001
Secondary Display Name	
Secondary SIP User ID	
Secondary Authenticate ID	
Secondary Authenticate Password	

Click **Save** and then restart the SNR-VG-1000-8S gateway for the new configurations to take effect.

10 Basic Operations

- Dial *158# to query the IP address of LAN port of SNR-VG-1000-8S;
- Dial *159# to query the IP address of WAN port of SNR-VG-1000-8S;
- Dial *114# to query the telephone number of a FXS port;
- Dial *165*000000# to restore default IP address, username and password;
- Restore factory default settings: (1) dial *166*000000#; (2) Press the RST button for 7 seconds; (3) Log into the gateway and then click “**Tools → Factory Reset**”. Then click **Apply**, and restart the gateway.
- Dial *111# to restart SNR-VG-1000-8S.

11 Detailed Configuration & Parameter Explanation

This document only provides instructions for quick installation and basic configuration. For detailed explanation of functions and parameters, please make reference to SNR-VG-1000-8S VoIP Gateway User Manual, or ask for online technical support.

Website: <http://support.nag.ru>