

# **iSearch**

## **User Manual**

**Ver 2.8**

# Contents

<b>Section I Installation of iSearch .....</b>	<b>- 1 -</b>
<b>Section II Application of iSearch.....</b>	<b>- 3 -</b>
2.1 Set of All Parameters .....	- 3 -
2.2 Update Obtained Information.....	- 4 -
2.3 Download of Local Version Update.....	- 4 -
2.4 Factory Parameter Set.....	- 4 -
<b>Section III Display Interface.....</b>	<b>- 5 -</b>
Display Listbox of Search Information .....	- 5 -

## Section I Installation of iSearch

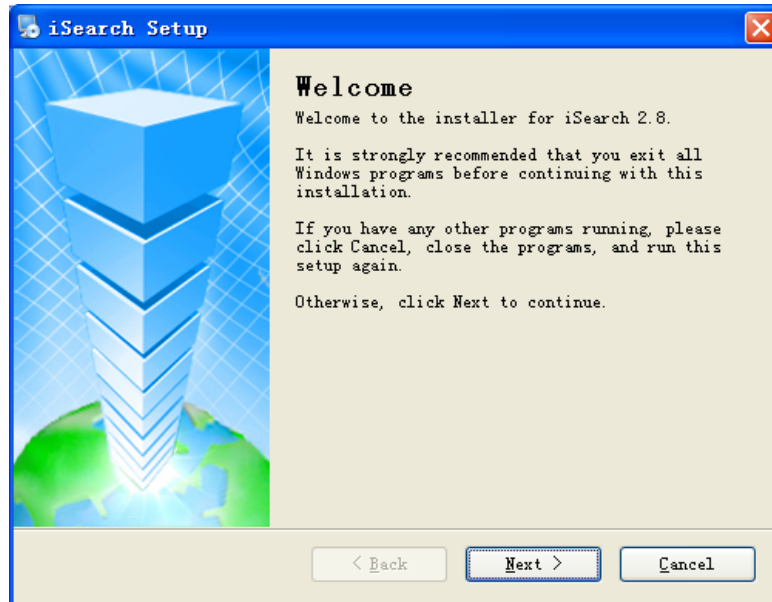


Figure 1 Installation Interface

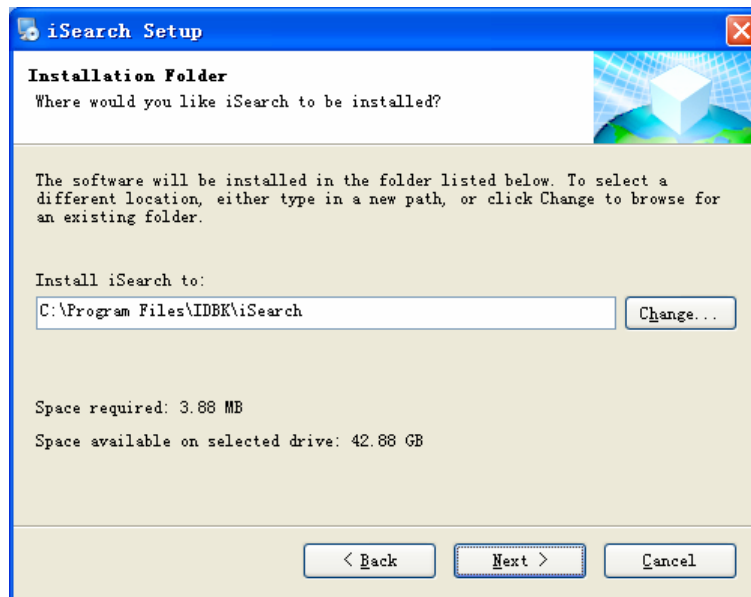


Figure 2 Selection of Installation Path

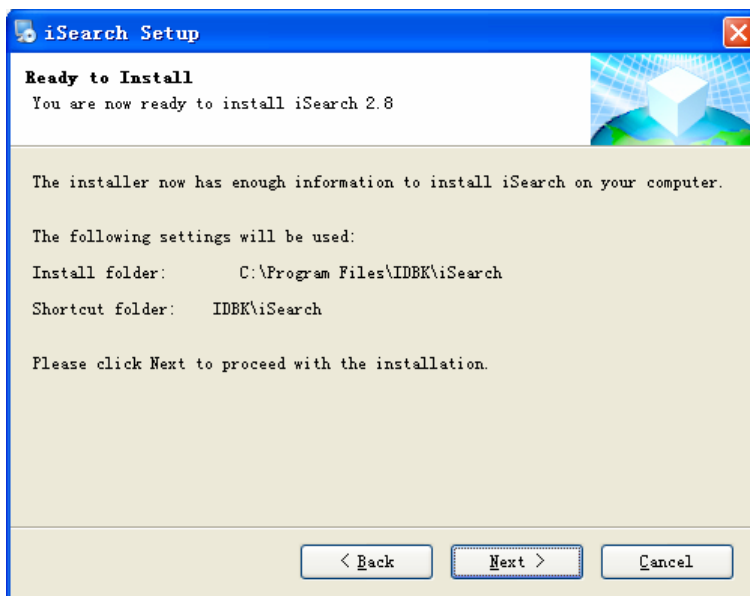


Figure 3 Ready to install

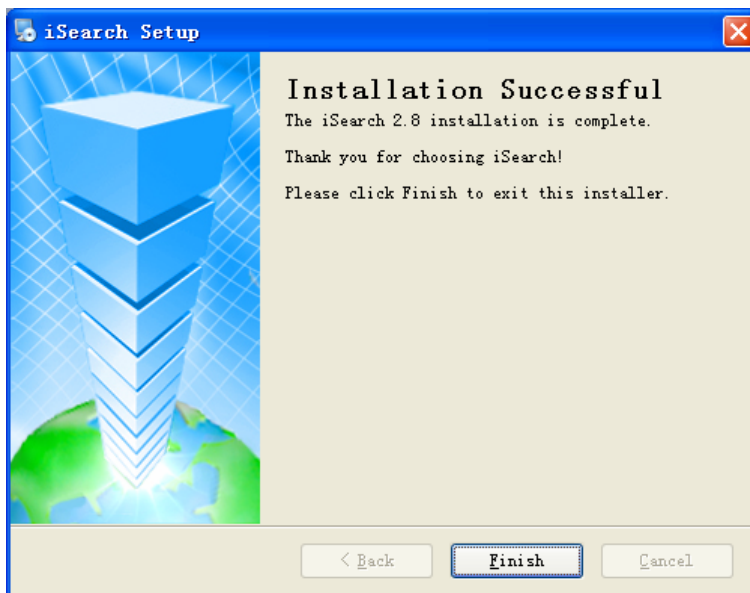


Figure 4 Installation Confirmation

## Section II Application of iSearch

Start iSearch, the following main interface will be displayed. The following is main interface of iSearch, what in left are all functional options, and what in right are searched related information.

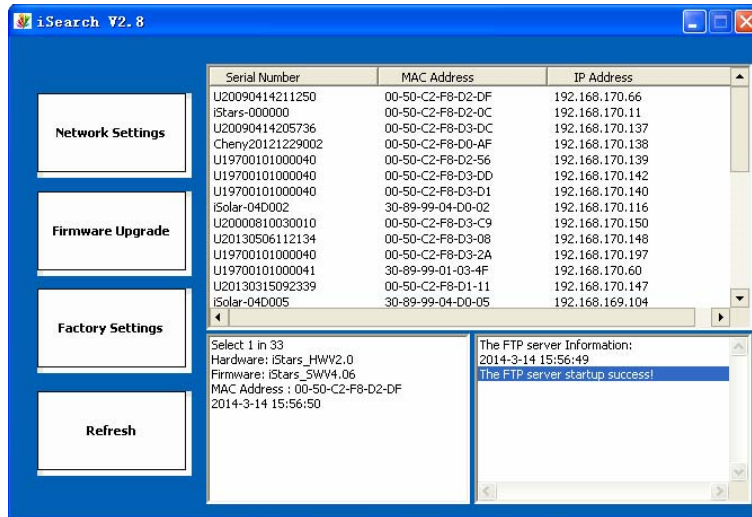


Figure 5 Main Interface of iSearch

### 2.1 Set of All Parameters

Start iSearch, and click <network set> in left, the following set interface will be displayed:

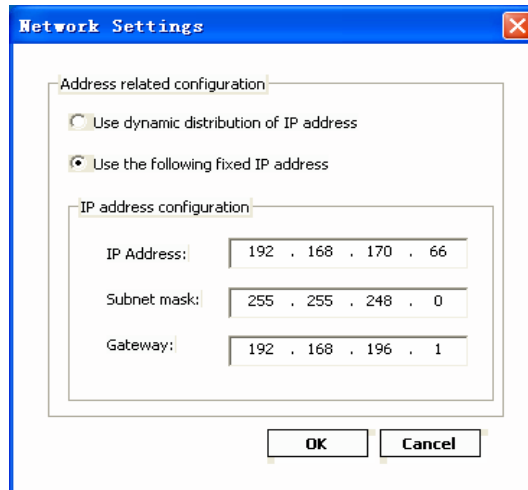


Figure 6 Set Interface of All Parameters

Address relative set: set the IP address, subnet mask, and gateway.

When using it in the first time, click button of confirm after finishing the setting, and then set of all parameters can be finished.

When clicking “dynamically distribute IP address”, all parameters of IP address will be obtained directly by the system.

## 2.2 Update Obtained Information

Click button of “refresh” to update related information of main interface such as series number, MAC address, and IP address, etc.

## 2.3 Download of Local Version Update

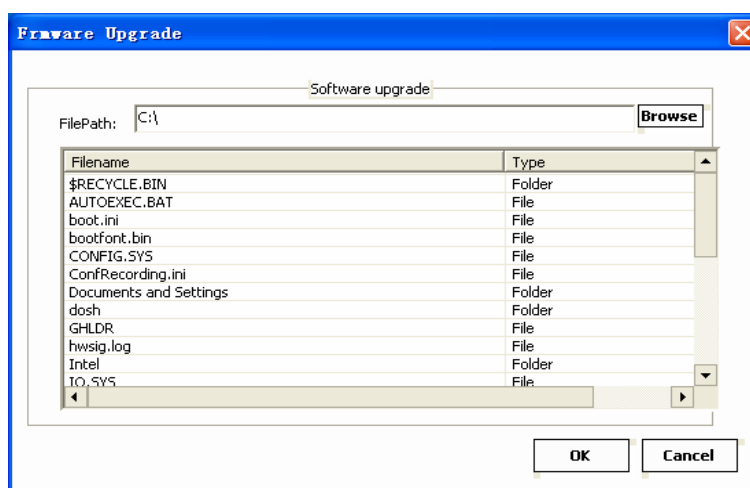


Figure 7 Version Update Interface

Click button of “version update”, start local FTP server, and the dialogue box of “version update” will be popped. As shown in above figure, click the button behind document path, and then shared folder of local server will be changed. (Login name of initial server is admin and password is admin.)

## 2.4 Factory Parameter Set

This function used for customer service.

## Section III Display Interface

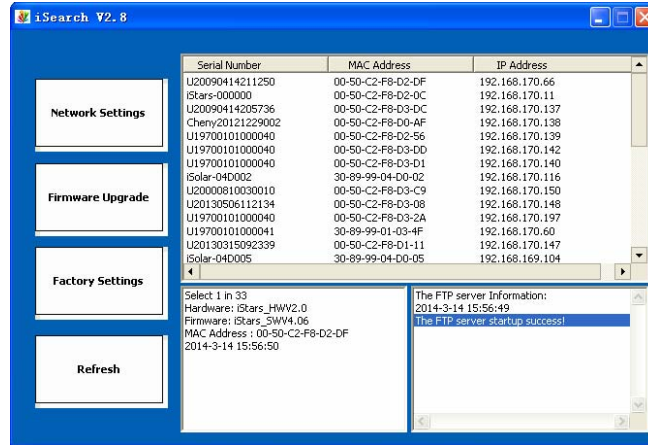


Figure 8 Display Interface of Search Information

Display interface of search information contains two listbox information boxes, the upper one is the display listbox of searching information, and the lower is detailed information display box of any message in listbox information box.

### Display Listbox of Search Information

Start the iSearch, it will automatically search all information of every SNMP card which will be displayed in this listbox.

- (1) Select a message by left click of mouse, and then information of corresponding SNMP card such as hardware version, software version, and MAC address will be displayed in “detail information box of SNMP card”.
- (2) Double-click the SNMP card into the corresponding monitoring web pages. As shown in following figure, the corresponding webpage login box will be popped, input correct username and password to enter into corresponding interface of monitoring webpage.
- (3) Input corresponding website to check whether it is set successfully.



Figure 9 Monitoring Webpage