

# IPCManager Tool 4.02.xx (Mac\_OS)

## User Manual



## Abstract :

The document is the user manual for the IPCManager Tool V4.02.xx which is used for the IP device (IP Cameras, NVRs etc.) management like searching, quick configurations, firmware upgrading, batch configurations etc.



---

# 1 Software Running Requirements

IPCManager Tool runs on Windows, Linux including CentOS, Ubuntu and Debian etc., and MAC OS platform. This document is for MAC OS platform only.

APPLE macOS.

CPU: 1.3GHZ

DDR: 2G

HDD: at least 10G

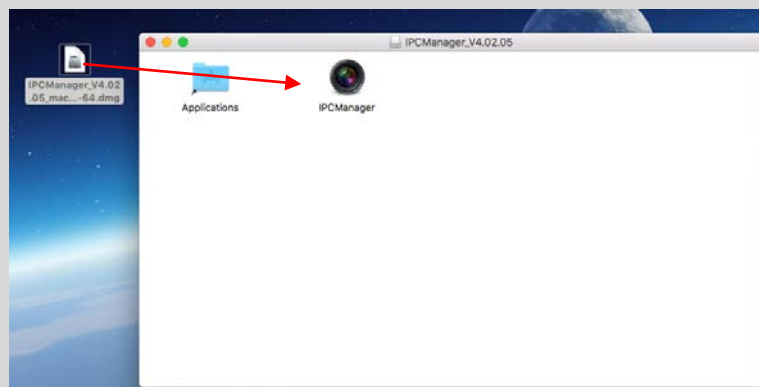
## 2 Software Installation on macOS

Please get the macOS version tool: IPCManager.4.02.xx\_normal\_macOS\_.dmg file from your sales.

- 1) Come to the folder where “IPCManager.4.02.xx\_normal\_macOS\_x86-64.dmg”;



- 2) Double click the file “IPCManager\_V4.02.xx\_macOS\_x86-64.dmg” to open it like the blow:

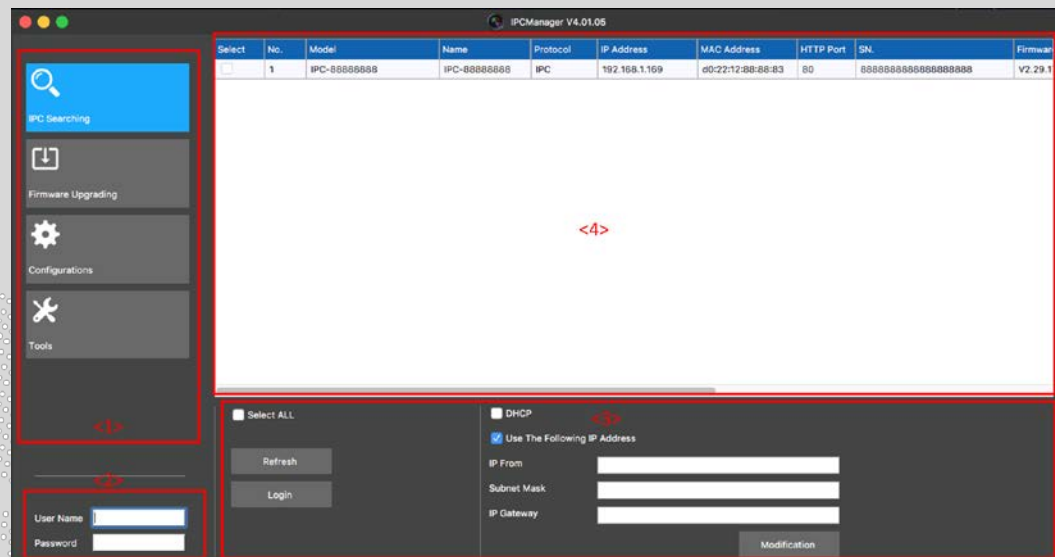


- 3) Double click the IPCManager to run the Tool;

You can copy or move IPCManager to the desktop or Applications for the later use quickly instead of coming to this folder.

## 3 IPCManager Tool Introduction

Here is the IPCManager V4.02 main window.



Zone <1>: Main Menu Selection: IPC Searching, Firmware Upgrading, Configurations and Tools;

Zone <2>: Fill out the use name and password to log in the cameras;

Zone <3>: There is the operation zone for the selected or all cameras;

Zone <4>: List of the cameras found on the network;

### 3.1 IPC Searching

The software can automatically search for cameras on the local network, even the IP Cameras' IP address segment is different from the local network's.

If you connect another IP Camera, please click "refresh" to update the current list;

#### 3.1.1 Revise the cameras' IP address in batch

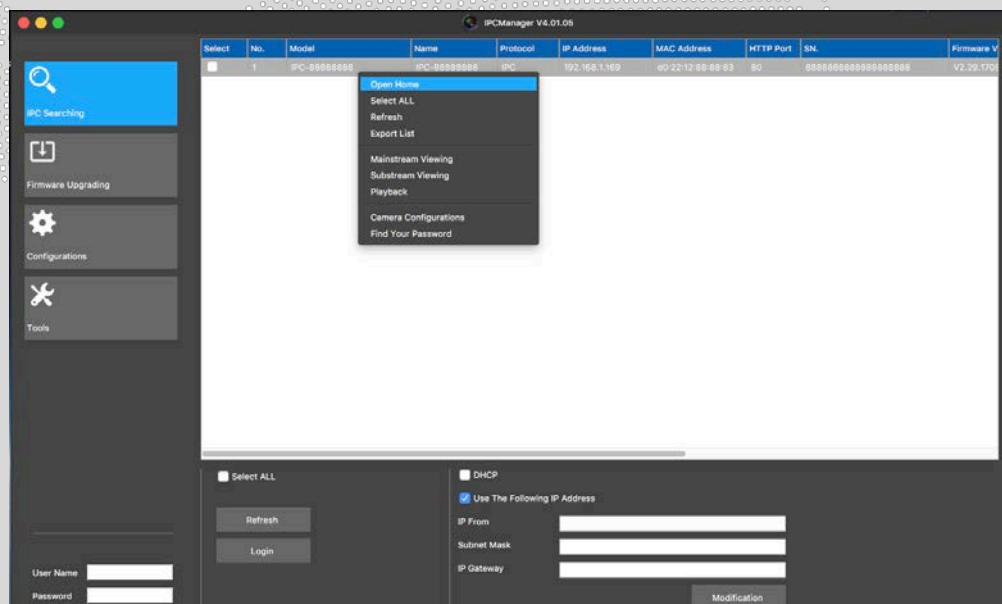
1) Fill out the cameras' username and password;

- 2) Check out the cameras you want to modify (or check the box of “Select All”);
- 3) Select “DHCP” to set all the selected cameras to DHCP mode; or fill out the IP address in “IP From”(The starting point of the IP range), “subnet mask” and “IP Gateway” to set static IP mode. Click “Modification” to start the process. On static IP mode, cameras will be assigned the IP address from “IP From” automatically. For example, if 30 cameras were selected, and the “IP From” is 192.168.3.101, “subnet mask” is 255.255.255.0, and the IP Gateway is 192.168.3.1, then these 30 cameras will get the IP address starting from 192.168.3.101 to 192.168.3.130.



### 3.1.2 Quick configurations for the camera selected.

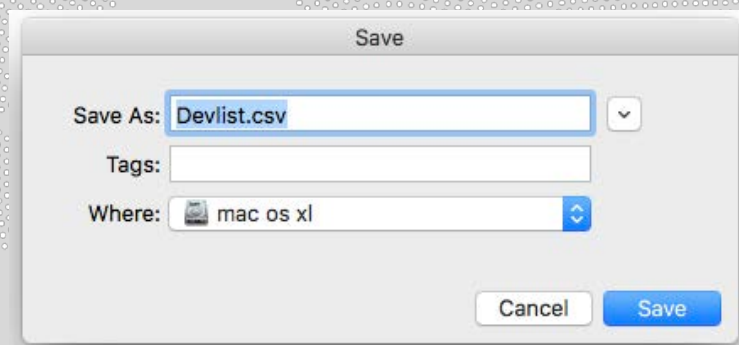
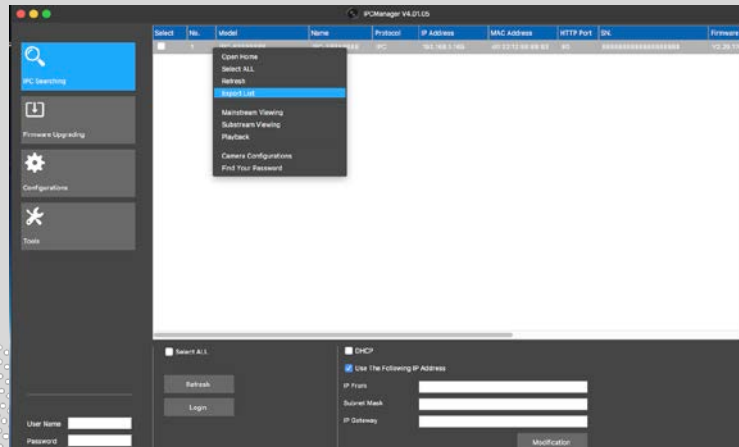
Right click on the camera like the below to see a list of options:



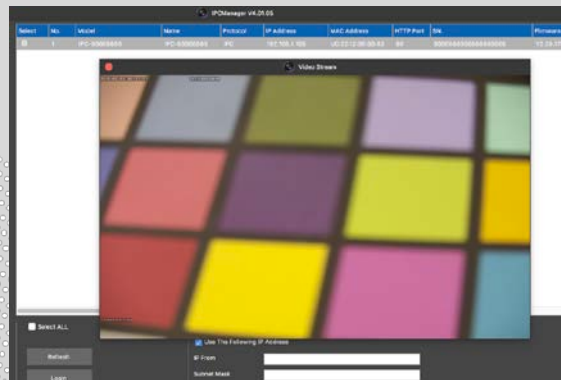
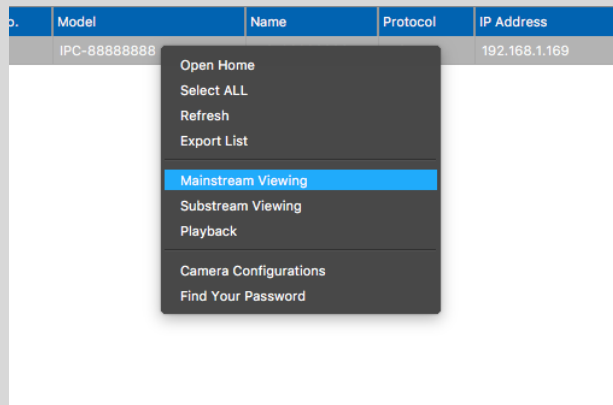
- 1) **Open Home:** select it to open the camera’s web interface; (Please check the camera’s web interface document for the details.)
- 2) **Select ALL:** select all the cameras in the list;
- 3) **Refresh:** update the list of the cameras;

- 4) **“Export List” Introduction:** export a list of the cameras found with the following information: Model, Name, Protocol, IP Address, MAC Address, HTTP Port, SN. Firmware Version and Hardware Version.

Select “Export List”, and then select the destination folder to export the cameras searched list, the file name should be fixed as “Devlist.csv”.



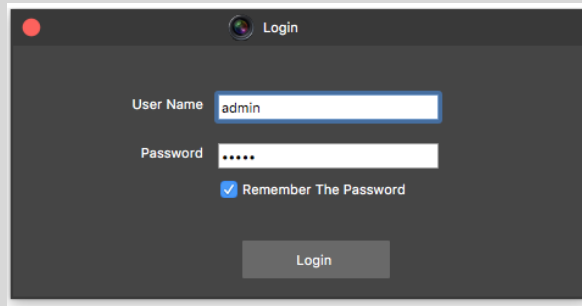
- 5) **Mainstream viewing:** view the camera’s main stream video. There will be a pop-up window asking for camera’s credential. Once the correct credential is entered, user can preview the main stream video.



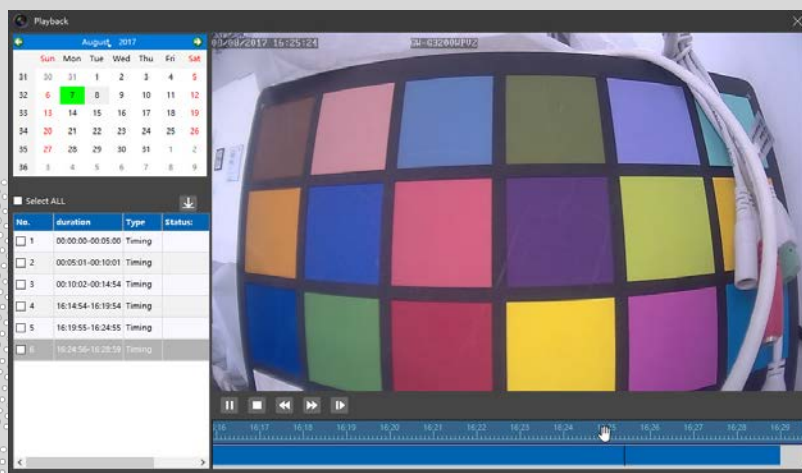
- 6) **Substream viewing:** view the camera's sub stream video. There will be a pop-up windows asking for camera's credential. Once the correct credential is entered, user can preview the sub stream video.
- 7) **Playback:** playback the records stored in camera's SD or USB Flash Disk; Please check the below section 3.1.3 for the details.
- 8) **Camera Configurations:** configure the camera's main parameters without opening the camera's web interface; Please check the below section 3.1.4 for the details.
- 9) **Find the password:** to ask for the camera's password if you forgot the camera's password. Please check the below section 3.1.5 for the details.

### 3.1.3 "Playback" Introduction

- 1) Select the camera, and then right click to select "**Playback**".
- 2) Fill out the camera's username and password to log into the camera.



3) Below is the “Playback” Window, there are FOUR sub windows.



- A. To select the date of the archives.
- B. The list of the archives in the camera, and these archives can be selected to download into the computer through clicking “Download” button after selecting the archives you want to download or check the “Select All” to select all archives.
- C. Playback Video Window.
- D. Playback Control Window, the timeline can be zoom in and zoom out through scrolling the mouse.

There are the buttons to control the playback: PLAY/STOP/Slow Back/Quick Forward/Play per Frame.

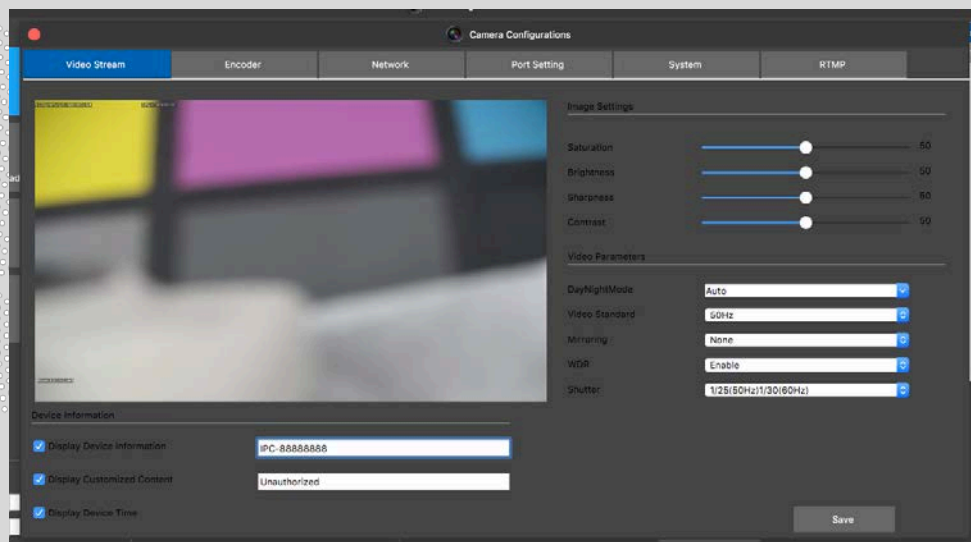
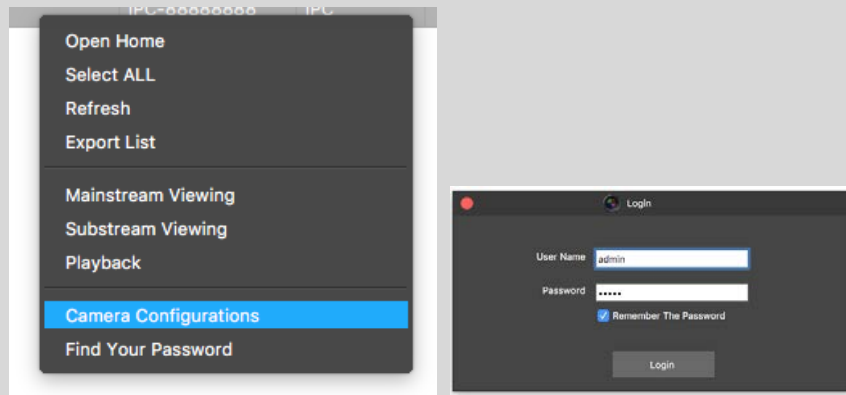
### 3.1.4 Camera Configurations

The user can set camera’s parameters without opening the camera’s web interface and installing the ActiveX plugin for IE;

For cameras in the list, please right click and select the “Camera configurations”.



For cameras not on the local network but can be accessed remotely, you can click “Login” and fill out the camera’s IP address, port, username and password to start “Camera configurations”.

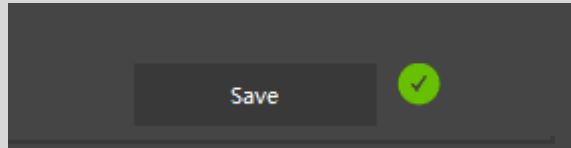


The parameters can be set through IPCManager Tool are: Video stream parameters, encoder parameters, network parameters, port settings and system information.

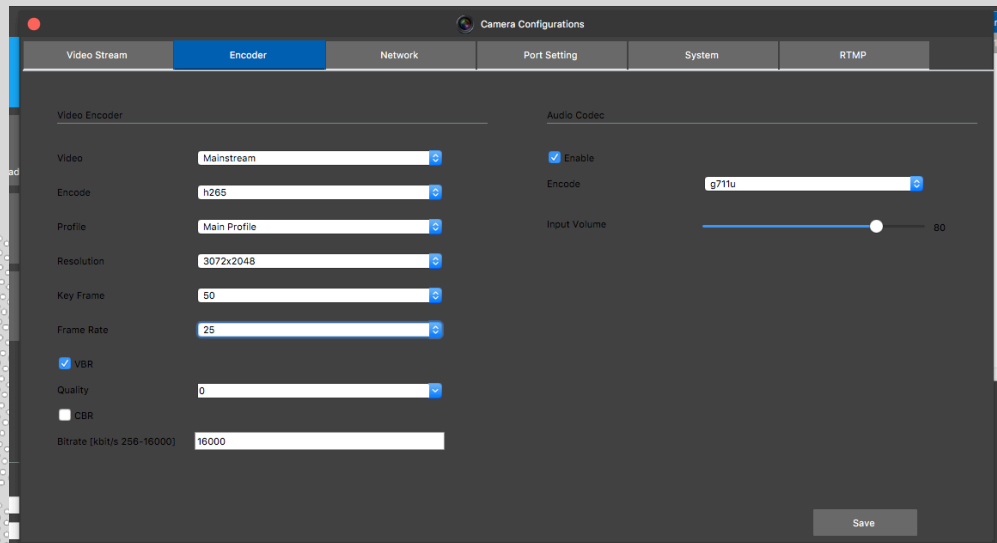
**1) Video stream:** double click on the video for full screen mode.

- A. Device information settings: the following information can be enabled to show on the video: Device Name (Information), Device Time, and Customized Information.
- B. Image settings: you can adjust the image’s parameters manually including saturation, brightness, sharpness and contrast.
- C. Video parameters: you can set some video parameters including Day and Night mode, Video standard, Mirroring, WDR enable or not, and shutter.

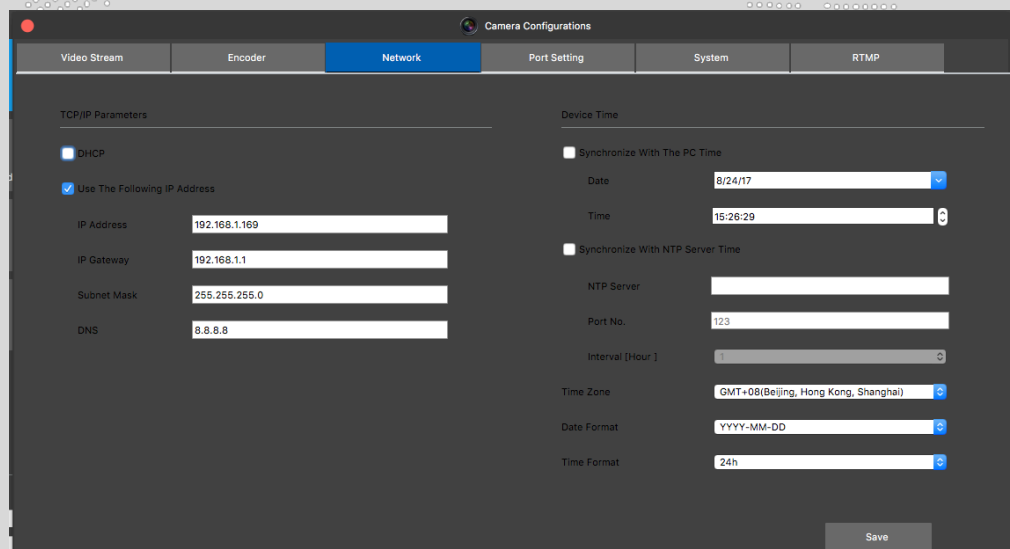
The above changes will be reflect in real-time, please click “Save” to confirm the changes.



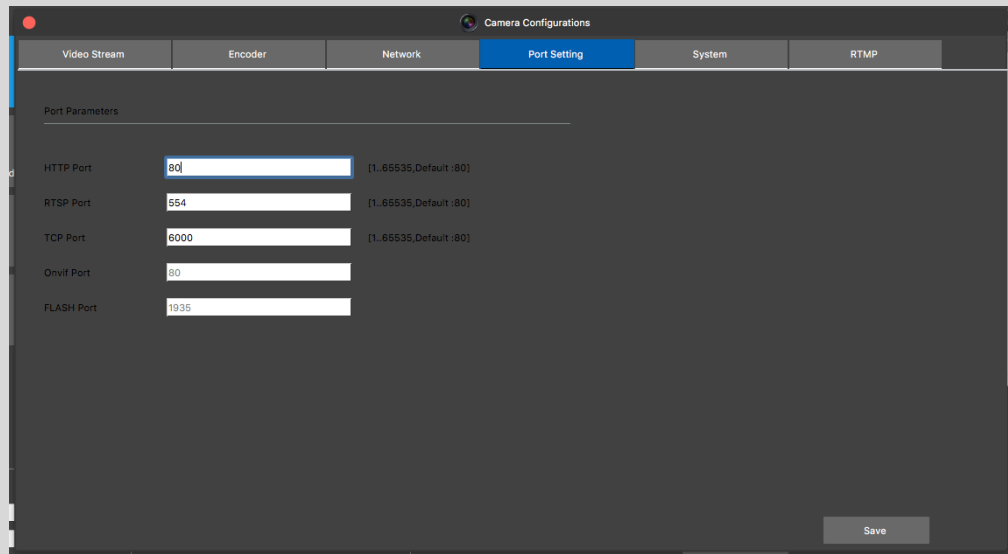
- 2) **Encoder:** you can set the camera's video and audio encoder parameters including: video resolution, encode type, code profile, key frame, FPS (frame rate), VBR and CBR etc. audio encode type. (Please be noted that AAC encode type cannot be set through IPCManager tool, please set it through opening the camera's web interface)



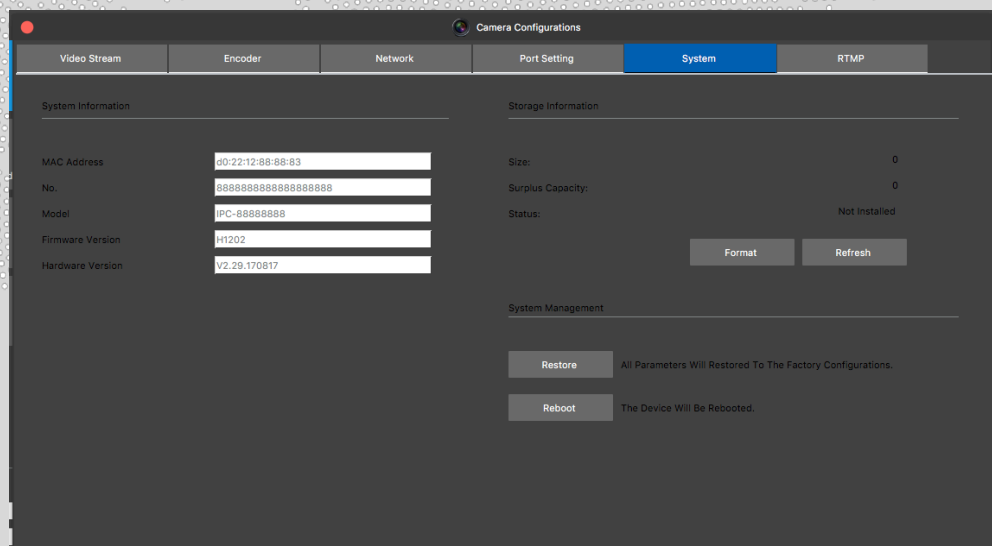
- 3) **Network Parameters:** the user can set network parameters here quickly including TCP/IP parameters, and Device time etc.



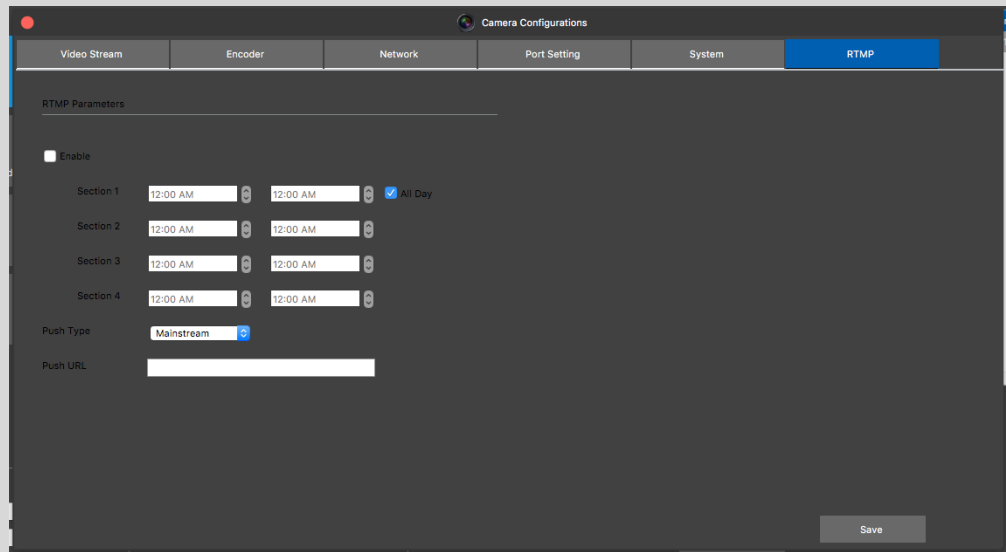
- 4) **Port Settings:** You can change the port numbers based on the limit specified in the interface.



5) **System Information:** here you can check / format the SD or USB Disk and camera can be restored or reset back to the factory settings.

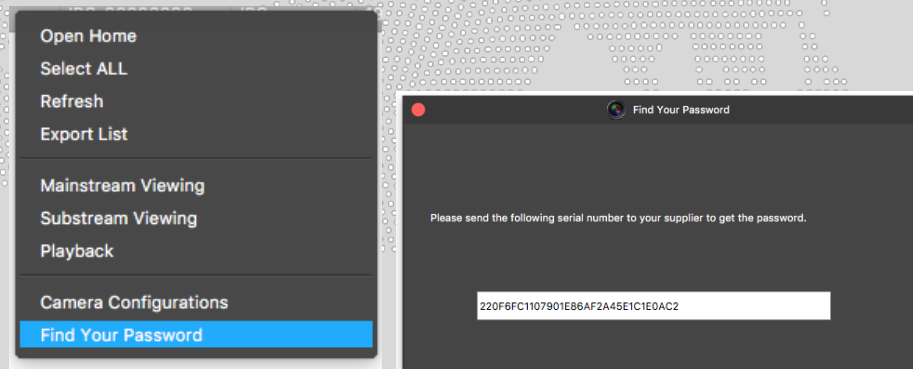


6) **RTMP:** here you can set RTMP push parameters.



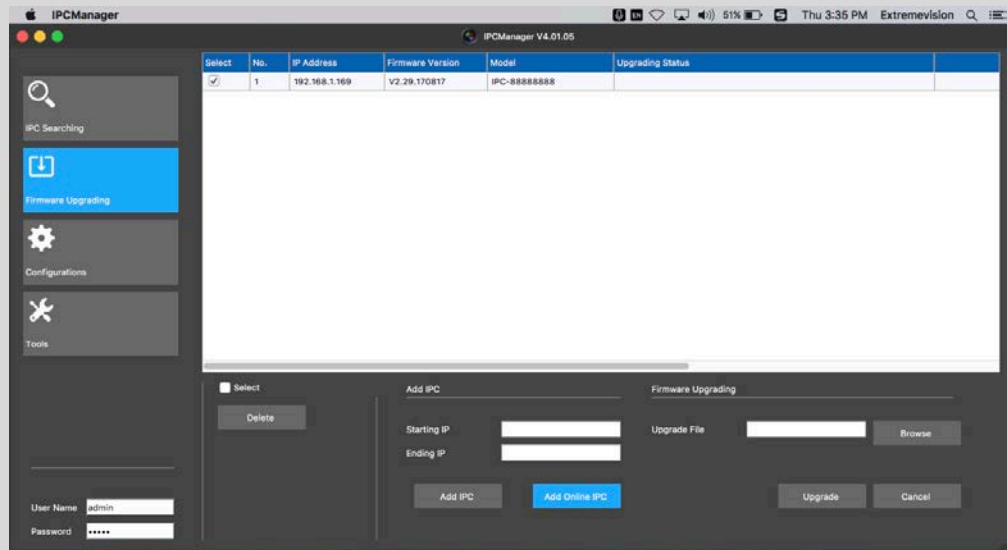
### 3.1.5 Find the password

If you forgot the camera's password, use this tool to get the serial security code required for your seller to calculate a master password for you.

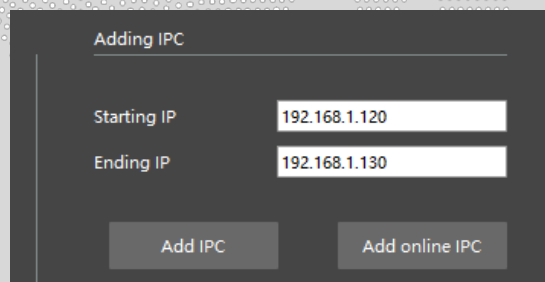


### 3.2 Firmware Upgrade

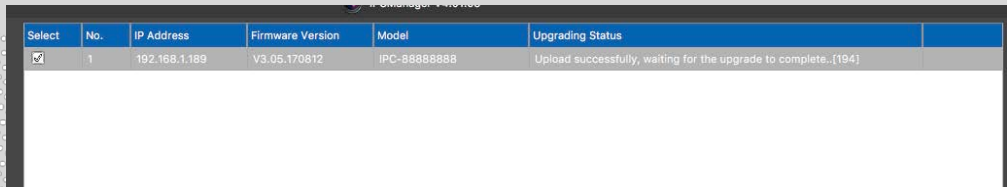
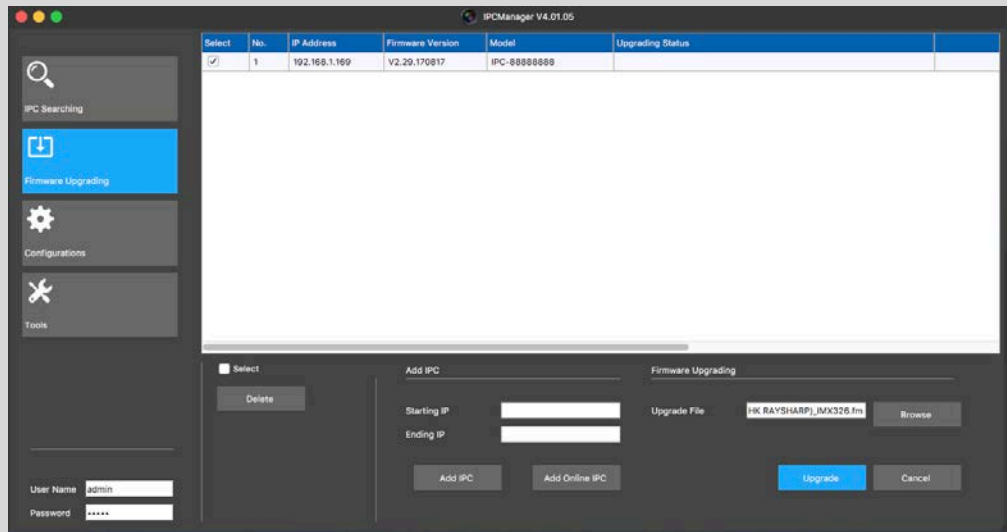
The cameras can be updated to the latest firmware, please see below.



- 1) Select “Firmware Upgrading” and there are two options to add the cameras.
  - A. Click “Add online IPC” to add all cameras.
  - B. Or fill out the “Starting IP” and “Ending IP” to add the camera manually like below:

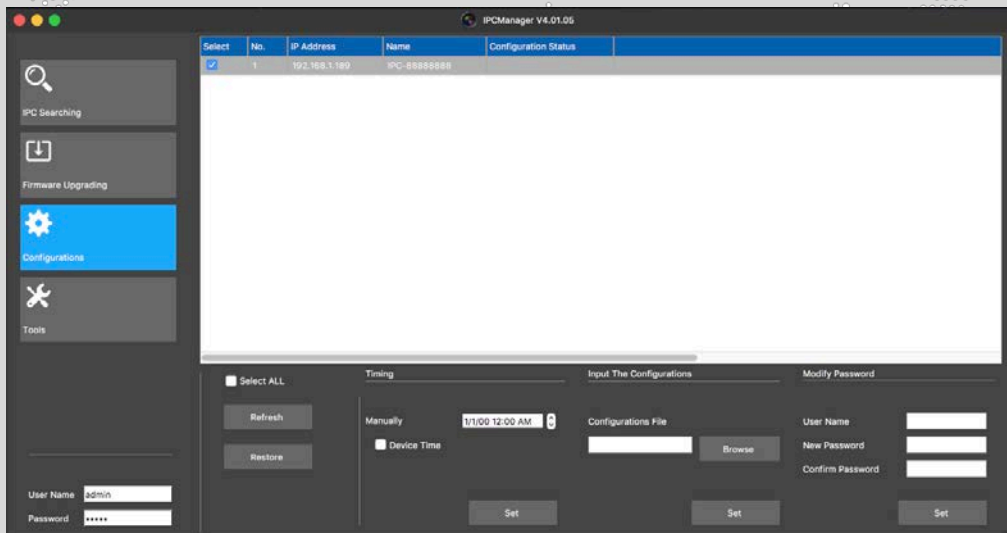


- 2) You can check the “Select All” box to select all cameras to upgrade them, or check the box one by one.
- 3) After confirming all the cameras, you selected can be upgraded (it means these cameras can use the same firmware, otherwise you cannot upgrade them at the same time.), please click “Browse” to select the firmware, and then click “upgrade” to start the upgrade process.



### 3.3 Configurations

The user can set cameras in batch in this interface. The settings include time settings, restore all the cameras and modify the password. The user can also export/import the cameras' configurations in batch.



- 1) User can click "Refresh" to refresh the list of cameras.

- 
- 2) You can check the box of **“Select All”** to select all the cameras, or just to select the cameras as needed.
  - 3) You can click **“Restore”** button to restore all of the cameras to the factory configurations.
  - 4) **Change the time** (manual), and set all of the cameras’ time to be the same, or set the cameras to be synchronized with the PC time, then click **“OK”** to save the changes.
  - 5) **Modify the specified user’s password**: fill out the user name whose password needs to be changed and then fill out the new password. Click **“Set”** to change the specified user’s password.
  - 6) **Export and Input the camera’s configurations**:

The user can export one of the camera’s configuration, and copy its configurations into other cameras in batch by following procedures:

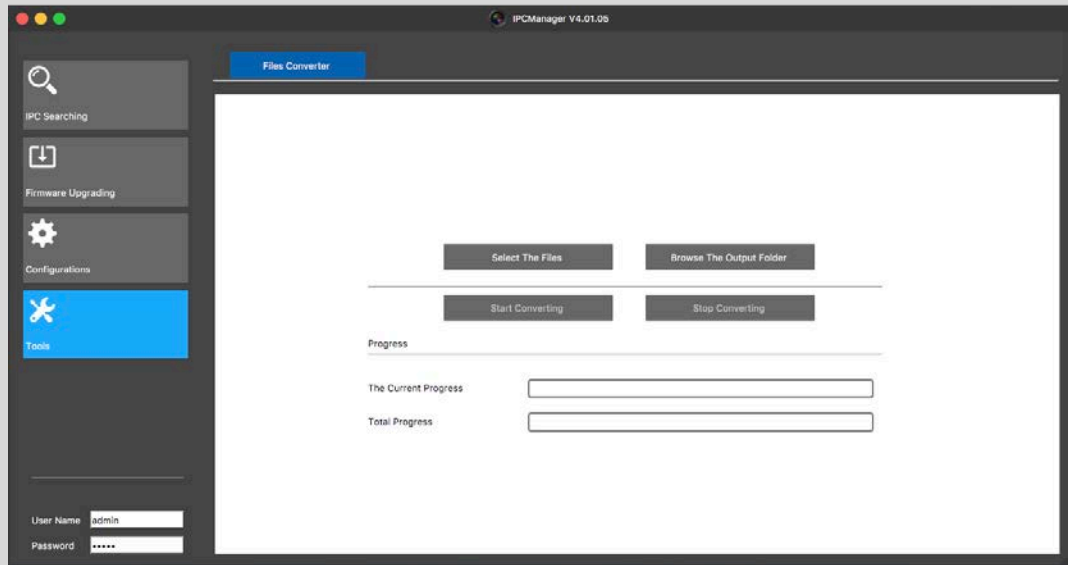
- A. Right click on the camera you wish to use the configuration from and then select **“Save Config”** to export a configuration file;
- B. In **“Input the configurations”** tab, click **“Browser”** to select the configuration file and then select the cameras which should be copied the configuration to. Click **“Set”** to start the process”.

## 3.4 Tools

This section includes some useful tool for the camera application. The file convertor is used to convert the file format from the private AVI to a normal AVI format.

The records in SD card or USB Flash Disk are formatted by the private AVI which is suitable for play by the private player tool, allowing controls like fast forward, slow play etc. You can use any normal player to play the converted AVI files with media player such as VLC Media Player.

Select the records downloaded from the camera by click **“Select the Files”**, and then click **“Browse the Output Folder”** to select a destination folder to store the converted files. Click **“Start Converting”** to start the convert process. (It’s possible to covert multiple files at the same time.



## 4 Help

The "Help" button on the top right corner (show below) will open a copy of the quick guide.

The screenshot shows a small help window with a title bar containing a question mark icon. The window displays a table with the following data:

|  | Firmware Version | Hard |
|--|------------------|------|
|  | V2.16.161212     | H090 |