

The logo for OMNY, featuring the word "OMNY" in a bold, white, sans-serif font. The letter "O" is stylized with a horizontal gap. A small red dot is positioned above the letter "Y".

OMNY

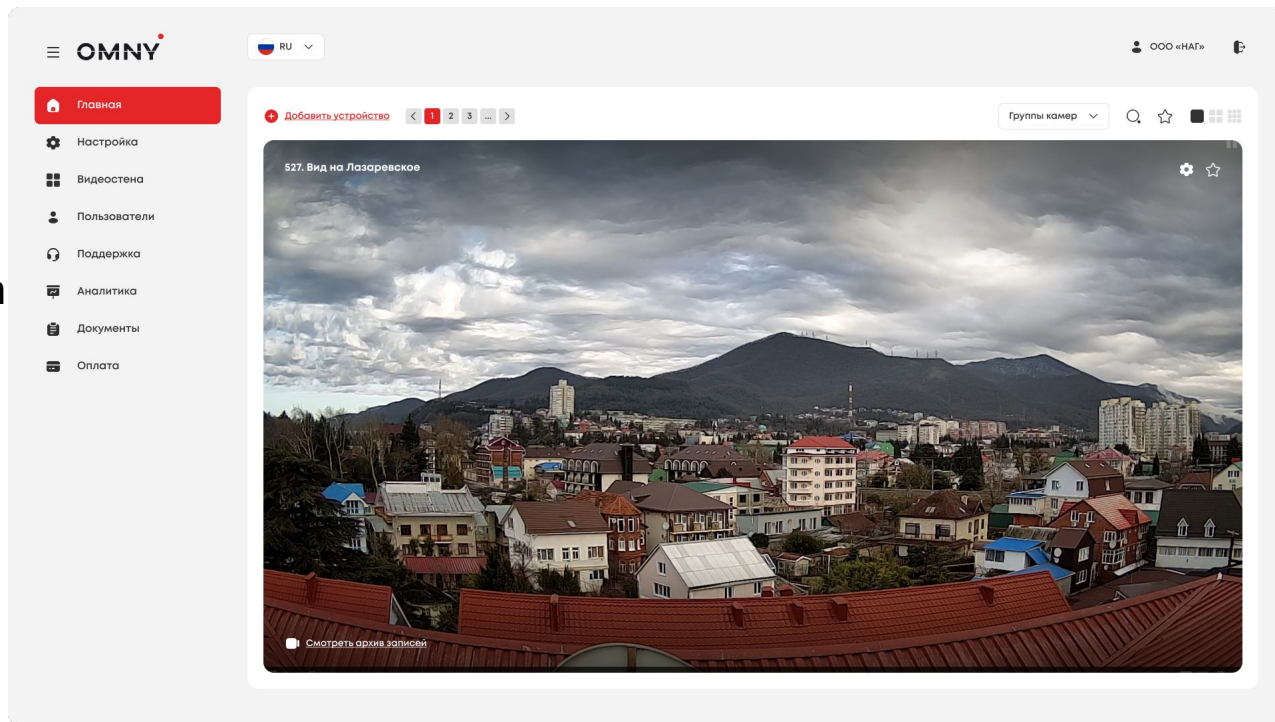
OMNYVIDEO

Video surveillance platform

What is Omnyvideo



A video surveillance platform designed for the organization of both on-premises and cloud video surveillance and video analytics systems.



Server Requirements



Number of cameras/streams	20-40	40-60	140-160	250-300	400-600	1800-2200	3800-4400
The central processor	Intel® Celeron® N3350	Intel® Pentium® N4200	Intel® Core™ i3-10110U	Intel® Core™ i5-8259U	Intel® Core™ i7-6770HQ	Intel® Xeon® E5-2690v4	2 x Intel® Xeon® E5-2690v4
The base clock frequency of the processor	1.1 GHz	1.1 GHz	2.1 GHz	2.3 GHz	2.6 GHz	2.6 GHz	2 x 2.6 GHz
Quantity cores / threads	2 / 2	4 / 4	2 / 4	4 / 8	4 / 8	14 / 28	28 / 56
RAM	4 GB	8 GB	10 GB	12 GB	16 GB	32 GB	48 GB
Camera bitrate	2000 Kbit/sec						

The above system requirements are indicative and may depend on the number of connected streams, their bitrate, the presence of enabled analytics, motion detection and transcoding.

Servers SNR



Сервер SNR для Omnyvideo
на 250 - 600 камер 8 HDD



OMNYVIDEO-600-8HDD-SERV-
SNR



Сервер SNR для Omnyvideo
на 3800 - 4400 камер 24 HDD



OMNYVIDEO-4400-24HDD-
SERV-SNR



Сервер SNR для Omnyvideo
на 1800 - 2200 камер 24 HDD



OMNYVIDEO-2200-24HDD-
SERV-SNR



Сервер SNR для Omnyvideo
на 250 - 600 камер 12 HDD



OMNYVIDEO-600-12HDD-SERV-
SNR



A line of SNR servers has been developed for the OMNYVIDEO platform
Licenses must be purchased for the solution to work. 1 license is equal to one connected camera

Basic video analytics

Popular types of analytics:

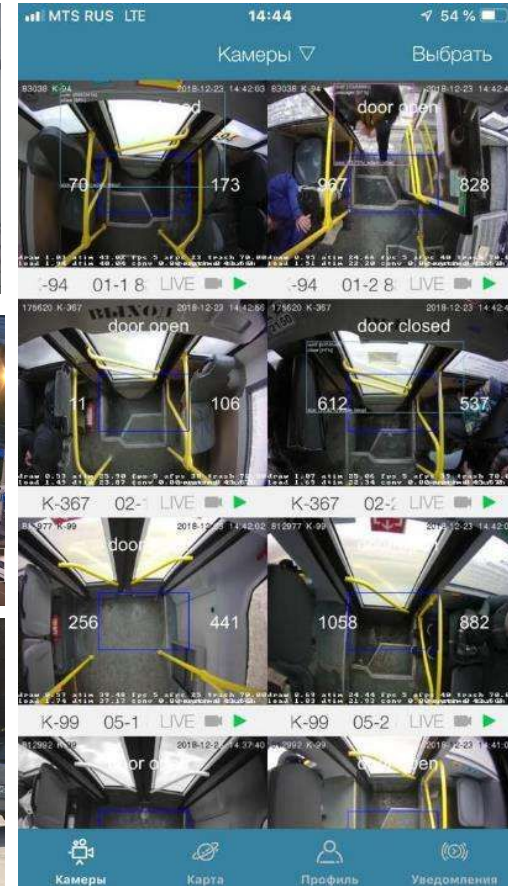
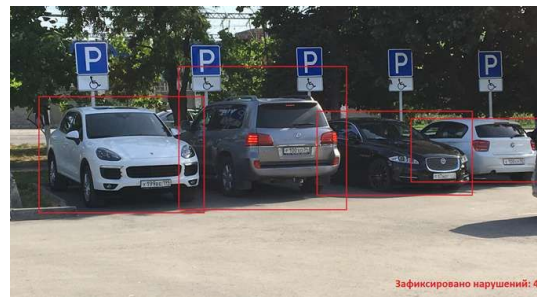
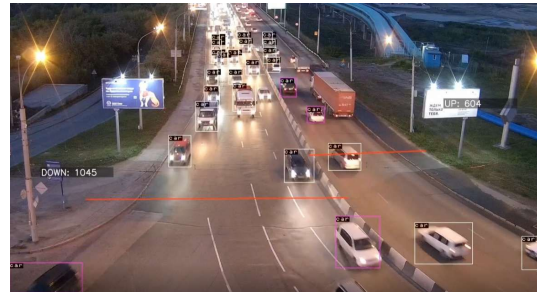
Passenger counting (95-98% accuracy).
Counting visitors.

Vehicle License plate Recognition (LPR).
Identification of vehicle types, recognition of special vehicles.

Face Recognition (FR).
Detection of PVN parameters
(gender-age-mood module).

Detection of the availability of personal protective equipment.

Product recognition (product selection, SKU recognition, price tag selection and recognition).



Face recognition service



The recognition accuracy is close to 100% (depends on the quality of the camera image).

Definition of vitality (liveness detection).

Classification of demographics (gender, age, ethnicity), attributes (masks, glasses, mustache, headdress, etc.).

Graphical representation of the results in the form of a table with the ability to play a video clip.

Search for a person by photo.



Интерфейс сервиса распознавания лиц. Включает панель управления, таблицу результатов и панель добавления личности.

Панель управления: Экспорт в CSV, 10, Детекции, Персоны.

Образец фото	Фото детекции	Идентификатор	Пол / Возраст	Детекция	Дополнительно
		-	М 32	25-04-2023 15:22:51	▶ Play Поиск по лицу
		-	М 20	25-04-2023 15:19:02	▶ Play Поиск по лицу
		-	Ж 37	25-04-2023 15:16:58	▶ Play Поиск по лицу

Панель добавления личности: FR_1, 2023-4-25 00:00 - 2023-4-25 15:23, Добавить персону, Выберите устройство, Идентификатор, Категория, Выберите файл, Файл не выбран, Загрузить.

License plate recognition service

Omnyvideo allows you to connect the license plate recognition service, vehicle types and brands to any video stream. The recognition zone is set manually, which allows you to clearly identify the boundaries of detection, avoid unnecessary triggers and recognitions. Determining the brand and type of vehicle allows you to analyze the traffic of passenger cars, trucks, and public transport, as well as to recognize special vehicles.

The image displays the Omnyvideo license plate recognition service interface. The top part shows a software window titled "RASPOZNAVANIYE NOMEROV" (License Plate Recognition) with a table of detected vehicles. The bottom part shows a live video feed of a road at night with license plate recognition overlays on the vehicles.

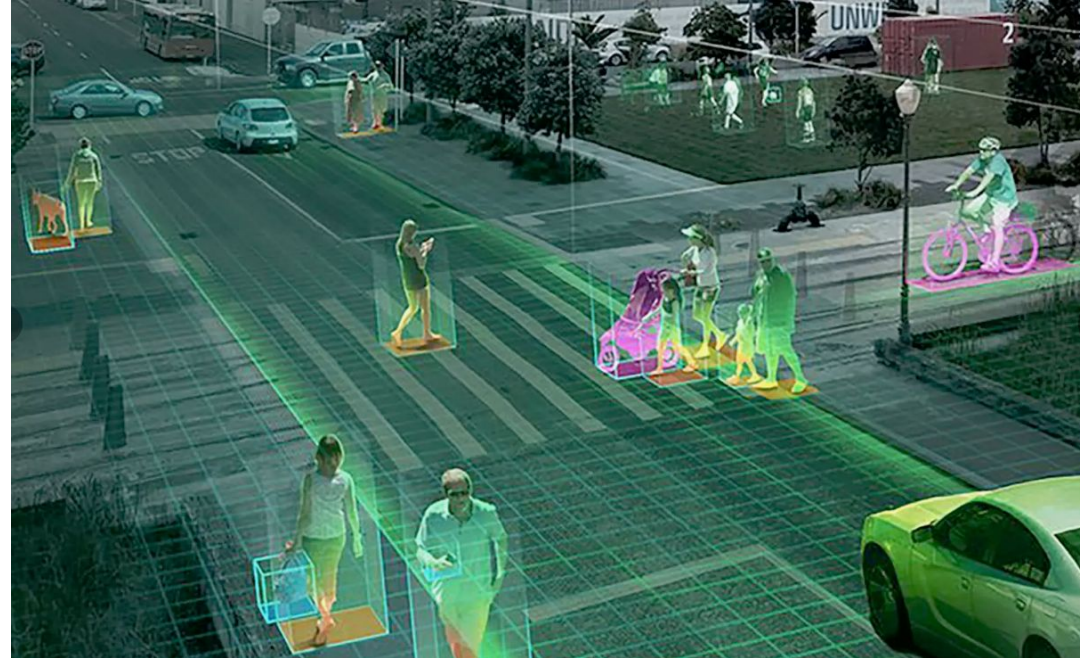
Дата	Номер	Фото	Тип ТС	Play
29-09-2022 15:17:54	P973HP 193			
29-09-2022 15:00:16	A185BA 193			
29-09-2022 14:22:12	A001BH 193			
29-09-2022 13:18:03	X645BX 193			

The live video feed shows a multi-lane road at night with several vehicles. Red bounding boxes are overlaid on the vehicles, and license plate numbers are displayed in white text. For example, "DOWN: 1045" is visible on the left side of the road, and "UP: 604" is visible on the right side. The interface also includes a sidebar menu with options like "Главная", "Камеры", "Видеоистории", "Регистраторы", "Видеоаналитика AI", "Распознавание номеров", "Распознавание лиц", "Подсчет пассажиров", "Профиль", "Загрузки", "Помощь", "Для администраторов", and "Выйти".

Custom video analytics







The platform can be supplemented with any video analytics services, both proprietary and third-party.



Competitive analysis



Price analysis of Omni Video solutions and competitors.
Part of the analytics in the OmnyVideo solution works on the camera and does not require additional purchase of licenses

Analytics				
License plate Recognition	206 \$	357 \$	463 \$	367 \$
Face recognition	432 \$	377 \$	894 \$	263 \$

One CPE any cameras



Thanks to the SNR CPE router, it is now possible to connect to the OMNYVIDEO service:

- Cameras from any manufacturer
- Registrars from any manufacturer
- Analog solutions

We are ready to connect any already installed equipment to the service!

