

Part No. 215663-B  
July 2004

4655 Great America Parkway  
Santa Clara, CA 95054

# Getting Started with the BayStack 420/425 Switch Management Software, Software Release 3.1



\* 2 1 5 6 6 3 - B \*

**NORTEL**  
NETWORKS™

## Copyright © 2004 Nortel Networks

All rights reserved. July 2004.

The information in this document is subject to change without notice. The statements, configurations, technical data, and recommendations in this document are believed to be accurate and reliable, but are presented without express or implied warranty. Users must take full responsibility for their applications of any products specified in this document. The information in this document is proprietary to Nortel Networks NA Inc.

The software described in this document is furnished under a license agreement and may be used only in accordance with the terms of that license. The software license agreement is included in this document.

## Trademarks

Autotopology, BayStack, BaySecure, Business Policy Switch 2000, Nortel Networks, the Nortel Networks logo, Optivity, Optivity Policy Services, Preside, and Quick2Config are trademarks of Nortel Networks.

Microsoft, MS, MS-DOS, Windows, and Windows NT are registered trademarks of Microsoft Corporation.

Java is a trademark of Sun Microsystems, Inc.

Acrobat and Adobe are trademarks of Adobe Systems, Inc.

All other trademarks and registered trademarks are the property of their respective owners.

## Restricted rights legend

Use, duplication, or disclosure by the United States Government is subject to restrictions as set forth in subparagraph (c)(1)(ii) of the Rights in Technical Data and Computer Software clause at DFARS 252.227-7013.

Notwithstanding any other license agreement that may pertain to, or accompany the delivery of, this computer software, the rights of the United States Government regarding its use, reproduction, and disclosure are as set forth in the Commercial Computer Software-Restricted Rights clause at FAR 52.227-19.

## Statement of conditions

In the interest of improving internal design, operational function, and/or reliability, Nortel Networks Inc. reserves the right to make changes to the products described in this document without notice.

Nortel Networks Inc. does not assume any liability that may occur due to the use or application of the product(s) or circuit layout(s) described herein.

Portions of the code in this software product may be Copyright © 1988, Regents of the University of California. All rights reserved. Redistribution and use in source and binary forms of such portions are permitted, provided that the above copyright notice and this paragraph are duplicated in all such forms and that any documentation, advertising materials, and other materials related to such distribution and use acknowledge that such portions of the software were developed by the University of California, Berkeley. The name of the University may not be used to endorse or promote products derived from such portions of the software without specific prior written permission.

**SUCH PORTIONS OF THE SOFTWARE ARE PROVIDED “AS IS” AND WITHOUT ANY EXPRESS OR IMPLIED WARRANTIES, INCLUDING, WITHOUT LIMITATION, THE IMPLIED WARRANTIES OF MERCHANTABILITY AND FITNESS FOR A PARTICULAR PURPOSE.**

In addition, the program and information contained herein are licensed only pursuant to a license agreement that contains restrictions on use and disclosure (that may incorporate by reference certain limitations and notices imposed by third parties).

---

## International regulatory statements of conformity

This is to certify that the Nortel Networks BayStack 425 switch was evaluated to the international regulatory standards for electromagnetic compliance (EMC) and safety and were found to have met the requirements for the following international standards:

- EMC - Electromagnetic Emissions – CISPR 22, Class A
- EMC - Electromagnetic Immunity – CISPR 24
- Electrical Safety – IEC 60950, with CB member national deviations

Further, the equipment has been certified as compliant with the national standards as detailed below.

## National electromagnetic compliance (EMC) statements of compliance

### FCC statement (USA only)

This equipment has been tested and found to comply with the limits for a Class A digital device, pursuant to Part 15 of the Federal Communications Commission (FCC) rules. These limits are designed to provide reasonable protection against harmful interference when the equipment is operated in a commercial environment. This equipment generates, uses, and can radiate radio frequency energy. If it is not installed and used in accordance with the instruction manual, it may cause harmful interference to radio communications. Operation of this equipment in a residential area is likely to cause harmful interference, in which case users will be required to take whatever measures may be necessary to correct the interference at their own expense.

### ICES statement (Canada only)

#### Canadian Department of Communications Radio Interference Regulations

This digital apparatus (Nortel Networks BayStack 425 switch) does not exceed the Class A limits for radio-noise emissions from digital apparatus as set out in the Radio Interference Regulations of the Canadian Department of Communications.

#### Règlement sur le brouillage radioélectrique du ministère des Communications

Cet appareil numérique (Nortel Networks BayStack 425 switch) respecte les limites de bruits radioélectriques visant les appareils numériques de classe A prescrites dans le Règlement sur le brouillage radioélectrique du ministère des Communications du Canada.

### CE marking statement (Europe only)

#### EN 55 022 statements

This is to certify that the Nortel Networks BayStack 425 switch is shielded against the generation of radio interference in accordance with the application of Council Directive 89/336/EEC. Conformity is declared by the application of EN 55 022 Class A (CISPR 22).



**Caution:** This device is a Class A product. In a domestic environment, this device can cause radio interference, in which case the user may be required to take appropriate measures.

---

**EN 55 024 statement**

This is to certify that the Nortel Networks BayStack 425 switch is shielded against the susceptibility to radio interference in accordance with the application of Council Directive 89/336/EEC. Conformity is declared by the application of EN 55 024 (CISPR 24).

**EC Declaration of Conformity**

This product conforms to the provisions of the R&TTE Directive 1999/5/EC.

**VCCI statement (Japan/Nippon only)**

This is a Class A product based on the standard of the Voluntary Control Council for Interference (VCCI) for information technology equipment. If this equipment is used in a domestic environment, radio disturbance may arise. When such trouble occurs, the user may be required to take corrective actions.

この装置は、情報処理装置等電波障害自主規制協議会（VCCI）の基準に基づくクラスA情報技術装置です。この装置を家庭環境で使用すると電波妨害を引き起こすことがあります。この場合には使用者が適切な対策を講ずるよう要求されることがあります。

**BSMI statement for BayStack 425 (Taiwan only)**

This is a Class A product based on the standard of the Bureau of Standards, Metrology and Inspection (BSMI) CNS 13438, Class A.

**警告使用者：**

這是甲類的資訊產品，在居住的環境中使用時，可能會造成射頻干擾，在這種情況下，使用者會被要求採取某些適當的對策。

**MIC notice for BayStack 425 (Republic of Korea only)**

This device has been approved for use in Business applications only per the Class A requirements of the Republic of Korea Ministry of Information and Communications (MIC). This device may not be sold for use in a non-business application.

Observe the Regulatory Marking label on the bottom surface of the chassis for specific certification information pertaining to this model. Each model in the BayStack Series which is approved for shipment to/usage in Korea is labeled as such, with all appropriate text and the appropriate MIC reference number.

---

## National safety statements of compliance

### CE marking statement (Europe only)

#### EN 60 950 statement

This is to certify that the Nortel Networks BayStack 425 switch is in compliance with the requirements of EN 60 950 in accordance with the Low Voltage Directive. Additional national differences for all European Union countries have been evaluated for compliance.

### NOM statement BayStack 425 (Mexico only)

The following information is provided on the devices described in this document in compliance with the safety requirements of the Norma Oficial Mexicana (NOM):

Exporter: Nortel Networks, Inc.  
4655 Great America Parkway  
Santa Clara CA 95054 USA

Importer: Nortel Networks de México, S.A. de C.V.  
Avenida Insurgentes Sur #1605  
Piso 30, Oficina  
Col. San Jose Insurgentes  
Deleg-Benito Juarez  
México D.F. 03900

Tel: 52 5 480 2100

Fax: 52 5 480 2199

Input: BayStack 425  
100 - 120 VAC 16A 50 to 60 Hz  
200 - 240 VAC 12 A 50 to 60 Hz

### Información NOM (unicamente para México)

La información siguiente se proporciona en el dispositivo o en los dispositivos descritos en este documento, en cumplimiento con los requisitos de la Norma Oficial Mexicana (NOM):

Exportador: Nortel Networks, Inc.  
4655 Great America Parkway  
Santa Clara, CA 95054 USA

Importador: Nortel Networks de México, S.A. de C.V.  
Avenida Insurgentes Sur #1605  
Piso 30, Oficina  
Col. San Jose Insurgentes  
Deleg-Benito Juarez  
México D.F. 03900

Tel: 52 5 480 2100

Fax: 52 5 480 2199

Embarcar a: BayStack 425  
100 - 120 VAC 16A 50 to 60 Hz  
200 - 240 VAC 12 A 50 to 60 Hz

## Nortel Networks Inc. software license agreement

This Software License Agreement (“License Agreement”) is between you, the end-user (“Customer”) and Nortel Networks Corporation and its subsidiaries and affiliates (“Nortel Networks”). PLEASE READ THE FOLLOWING CAREFULLY. YOU MUST ACCEPT THESE LICENSE TERMS IN ORDER TO DOWNLOAD AND/OR USE THE SOFTWARE. USE OF THE SOFTWARE CONSTITUTES YOUR ACCEPTANCE OF THIS LICENSE AGREEMENT. If you do not accept these terms and conditions, return the Software, unused and in the original shipping container, within 30 days of purchase to obtain a credit for the full purchase price.

“Software” is owned or licensed by Nortel Networks, its parent or one of its subsidiaries or affiliates, and is copyrighted and licensed, not sold. Software consists of machine-readable instructions, its components, data, audio-visual content (such as images, text, recordings or pictures) and related licensed materials including all whole or partial copies. Nortel Networks grants you a license to use the Software only in the country where you acquired the Software. You obtain no rights other than those granted to you under this License Agreement. You are responsible for the selection of the Software and for the installation of, use of, and results obtained from the Software.

**1. Licensed Use of Software.** Nortel Networks grants Customer a nonexclusive license to use a copy of the Software on only one machine at any one time or to the extent of the activation or authorized usage level, whichever is applicable. To the extent Software is furnished for use with designated hardware or Customer furnished equipment (“CFE”), Customer is granted a nonexclusive license to use Software only on such hardware or CFE, as applicable. Software contains trade secrets and Customer agrees to treat Software as confidential information using the same care and discretion Customer uses with its own similar information that it does not wish to disclose, publish or disseminate. Customer will ensure that anyone who uses the Software does so only in compliance with the terms of this Agreement. Customer shall not a) use, copy, modify, transfer or distribute the Software except as expressly authorized; b) reverse assemble, reverse compile, reverse engineer or otherwise translate the Software; c) create derivative works or modifications unless expressly authorized; or d) sublicense, rent or lease the Software. Licensors of intellectual property to Nortel Networks are beneficiaries of this provision. Upon termination or breach of the license by Customer or in the event designated hardware or CFE is no longer in use, Customer will promptly return the Software to Nortel Networks or certify its destruction. Nortel Networks may audit by remote polling or other reasonable means to determine Customer’s Software activation or usage levels. If suppliers of third party software included in Software require Nortel Networks to include additional or different terms, Customer agrees to abide by such terms provided by Nortel Networks with respect to such third party software.

**2. Warranty.** Except as may be otherwise expressly agreed to in writing between Nortel Networks and Customer, Software is provided “AS IS” without any warranties (conditions) of any kind. NORTEL NETWORKS DISCLAIMS ALL WARRANTIES (CONDITIONS) FOR THE SOFTWARE, EITHER EXPRESS OR IMPLIED, INCLUDING, BUT NOT LIMITED TO THE IMPLIED WARRANTIES OF MERCHANTABILITY AND FITNESS FOR A PARTICULAR PURPOSE AND ANY WARRANTY OF NON-INFRINGEMENT. Nortel Networks is not obligated to provide support of any kind for the Software. Some jurisdictions do not allow exclusion of implied warranties, and, in such event, the above exclusions may not apply.

**3. Limitation of Remedies.** IN NO EVENT SHALL NORTEL NETWORKS OR ITS AGENTS OR SUPPLIERS BE LIABLE FOR ANY OF THE FOLLOWING: a) DAMAGES BASED ON ANY THIRD PARTY CLAIM; b) LOSS OF, OR DAMAGE TO, CUSTOMER’S RECORDS, FILES OR DATA; OR c) DIRECT, INDIRECT, SPECIAL, INCIDENTAL, PUNITIVE, OR CONSEQUENTIAL DAMAGES (INCLUDING LOST PROFITS OR SAVINGS), WHETHER IN CONTRACT, TORT OR OTHERWISE (INCLUDING NEGLIGENCE) ARISING OUT OF YOUR USE OF THE SOFTWARE, EVEN IF NORTEL NETWORKS, ITS AGENTS OR SUPPLIERS HAVE BEEN ADVISED OF THEIR POSSIBILITY. The forgoing limitations of remedies also apply to any developer and/or supplier of the Software. Such developer and/or supplier is an intended beneficiary of this Section. Some jurisdictions do not allow these limitations or exclusions and, in such event, they may not apply.

### **4. General**

a) If Customer is the United States Government, the following paragraph shall apply: All Nortel Networks Software available under this License Agreement is commercial computer software and commercial computer software documentation and, in the event Software is licensed for or on behalf of the United States Government, the respective

---

rights to the software and software documentation are governed by Nortel Networks standard commercial license in accordance with U.S. Federal Regulations at 48 C.F.R. Sections 12.212 (for non-DoD entities) and 48 C.F.R. 227.7202 (for DoD entities).

- b)** Customer may terminate the license at any time. Nortel Networks may terminate the license if Customer fails to comply with the terms and conditions of this license. In either event, upon termination, Customer must either return the Software to Nortel Networks or certify its destruction.
- c)** Customer is responsible for payment of any taxes, including personal property taxes, resulting from Customer's use of the Software. Customer agrees to comply with all applicable laws including all applicable export and import laws and regulations.
- d)** Neither party may bring an action, regardless of form, more than two years after the cause of the action arose.
- e)** The terms and conditions of this License Agreement form the complete and exclusive agreement between Customer and Nortel Networks.
- f)** This License Agreement is governed by the laws of the country in which Customer acquires the Software. If the Software is acquired in the United States, then this License Agreement is governed by the laws of the state of New York.

**Revision History**

<b>Date Revised</b>	<b>Version</b>	<b>Reason for revision</b>
July 2004	1.0	Documenting new features for BayStack 420/425, software release 3.1.



---

# Contents

---

<b>Preface</b> .....	<b>17</b>
Before you begin .....	17
Text conventions .....	18
Related publications .....	18
Hard-copy technical manuals .....	19
How to get help .....	19
<b>Chapter 1</b>	
<b>Management basics</b> .....	<b>21</b>
Management tools .....	21
Device Manager software .....	21
Web-based management interface .....	22
Setting the switch IP parameters .....	22
Access levels and passwords .....	25
<b>Chapter 2</b>	
<b>Installing Device Manager software</b> .....	<b>27</b>
Accessing the Nortel Networks Web site .....	27
Installing Windows .....	27
Downloading the Device Manager Windows software .....	28
Installing the Device Manager Windows software .....	28
UNIX installation .....	34
Installing Solaris OS patches .....	35
Installing the Device Manager UNIX software .....	35
<b>Chapter 3</b>	
<b>Device Manager basics</b> .....	<b>41</b>
Starting Device Manager .....	41

Setting the Device Manager properties .....	42
Opening a device .....	45
Device Manager window .....	48
Menu bar .....	48
Toolbar .....	49
Device view .....	50
Selecting objects .....	50
Selecting a single object .....	51
Selecting multiple objects .....	52
Viewing information about an GBIC port .....	52
LEDs and ports .....	54
Shortcut menus .....	55
Status bar .....	56
Using the buttons in Device Manager dialog boxes .....	56
Editing objects .....	57
Working with statistics and graphs .....	58
Types of statistics .....	58
Types of graphs .....	58
Statistics for single and multiple objects .....	61
Viewing statistics as graphs .....	62
Telnetting to a switch .....	65
Trap log .....	65
Online Help .....	66
<b>Chapter 4</b>	
<b>Web management interface basics .....</b>	<b>67</b>
Requirements .....	67
Accessing the Web interface .....	68
Web page layout .....	70
Menu .....	71
Content area .....	73
Icons .....	73
Setting up security .....	74
Setting console, Telnet, and Web passwords .....	74
Setting remote dial-in access security .....	75

EAPOL-based security .....	76
ASCII configuration upload and download .....	77
<b>Index .....</b>	<b>79</b>



---

## Figures

---

Figure 1	Main menu .....	23
Figure 2	IP Configuration/Setup menu .....	24
Figure 3	InstallAnywhere Introduction dialog box .....	29
Figure 4	License Agreement dialog box .....	30
Figure 5	Choose Install Set dialog box .....	30
Figure 6	Choose Install Folder dialog box .....	31
Figure 7	Choose Shortcut Folder dialog box .....	32
Figure 8	Pre-installation Summary dialog box .....	32
Figure 9	Installing Java Device Manager dialog box .....	33
Figure 10	Install Complete dialog box .....	34
Figure 11	InstallAnywhere Introduction dialog box .....	36
Figure 12	License Agreement dialog box .....	36
Figure 13	Choose Install Set dialog box .....	37
Figure 14	Choose Install Folder dialog box .....	38
Figure 15	Pre-installation Summary dialog box .....	38
Figure 16	Installing Java Device Manager dialog box .....	39
Figure 17	Install Complete dialog box .....	40
Figure 18	Device Manager window .....	42
Figure 19	Properties dialog box .....	43
Figure 20	Open Device dialog box .....	46
Figure 21	Device view .....	48
Figure 22	Parts of the Device Manager window .....	48
Figure 23	Objects in the device view .....	51
Figure 24	Port dialog box for a GBIC .....	53
Figure 25	Port color legend .....	54
Figure 26	Shortcut menu .....	55
Figure 27	Port shortcut menu .....	55
Figure 28	Line graph .....	59
Figure 29	Area graph .....	59

## 14 Figures

---

Figure 30	Bar graph	60
Figure 31	Pie graph	60
Figure 32	Interface statistics for a single port	61
Figure 33	Interface statistics for multiple ports	62
Figure 34	Statistics dialog box for a port	63
Figure 35	System Information home page	69
Figure 36	Login page	69
Figure 37	Menu	71
Figure 38	Console password page	75
Figure 39	Radius management page	76

---

## Tables

---

Table 1	Properties dialog box items .....	43
Table 2	SNMP community string default values .....	45
Table 3	Open Device dialog box fields .....	47
Table 4	Menu bar commands .....	49
Table 5	Toolbar buttons .....	49
Table 6	Port color codes .....	54
Table 7	Switch unit shortcut menu command .....	55
Table 8	Port shortcut menu commands .....	56
Table 9	Device Manager buttons .....	56
Table 10	Types of statistics .....	58
Table 11	Graph dialog box buttons .....	64
Table 12	Help file locations .....	66
Table 13	User levels in the Web management interface .....	70
Table 14	Menu headings and options .....	72
Table 15	Page icons .....	73





---

## Preface

---

The Nortel Networks\* BayStack\* 425 Switch management software provides the means to configure and monitor the operation of your BayStack 425 24T/48T switches. Management software includes the console interface resident in each BayStack 420/425 Switch; Java-based Device Manager software, which you install on a management station in the network; and a Web-based management interface accessible through a Web browser.

This guide provides instructions for installing the Device Manager software and summarizes procedures for using Device Manager and the Web-based management interface. For information on using the console interface, refer to *Using the BayStack 420/425 Switch, Software Release 3.1*.

This guide includes the following information:

- A summary of management options for the switch
- Instructions to install Device Manager software
- A summary of navigation procedures for Device Manager and initial setup procedures using Device Manager
- An overview of the Web management interface
- Common startup problems and how to troubleshoot them

## Before you begin

This guide is intended for network administrators with the following background:

- Basic knowledge of networks, Ethernet\* bridging, and IP and IPX routing
- Familiarity with networking concepts and terminology
- Basic knowledge of network topologies
- Experience with windowing systems, Graphical User Interfaces (GUIs), or Web browsers

## Text conventions

This guide uses the following text conventions:

angle brackets (< >)	Indicate that you choose the text to enter based on the description inside the brackets. Do not type the brackets when entering the command. Example: If the command syntax is <code>ping &lt;ip_address&gt;</code> , you enter <code>ping 192.32.10.12</code>
<b>bold Courier text</b>	Indicates command names and options and text that you need to enter. Example: <b>Enter # chmod 755 ./install_dmvm.</b>
<i>italic text</i>	Indicates new terms, book titles, and variables in command syntax descriptions. Where a variable is two or more words, the words are connected by an underscore. Example: If the command syntax is <code>install_dmvm &lt;filename&gt; &lt;target_directory&gt;</code> , <i>target_directory</i> is one variable and you substitute one value for it.
plain Courier text	Indicates command syntax and system output, for example, prompts and system messages. Example: % JDM
separator (>)	Shows menu paths. Example: Edit > File System identifies the File System option on the Edit menu.

## Related publications

For more information about using the BayStack 420/425 Switch, refer to the following publications:

- *Using the BayStack 420/425 Switch, Software Release 3.1* (part number 215661-B)

Describes how to install and use the BayStack Switch; includes instructions to use the console interface to configure the switch.

- *Installing the BayStack 425 Switch* (part number 215658-B)

Provides installation instructions for the switch in English and five other languages.

- *Reference for the BayStack 420/425 Switch Management Software, Software Release 3.1* (part number 215662-C)

Describes how to use Device Manager software to manage the switch.

- *Using Web-Based Management for the BayStack 420/425, Software Release 3.1* (part number 215660-B)

Describes how to use the Web-based management interface to configure and monitor switch operations.

## Hard-copy technical manuals

You can print selected technical manuals and release notes free, directly from the Internet. Go to [www.nortelnetworks.com/documentation](http://www.nortelnetworks.com/documentation). Find the product for which you need documentation. Then locate the specific category and model or version for your hardware or software product. Use Adobe\* Acrobat Reader\* to open the manuals and release notes, search for the sections you need, and print them on most standard printers. Go to Adobe Systems at [www.adobe.com](http://www.adobe.com) to download a free copy of the Adobe Acrobat Reader.

## How to get help

If you purchased a service contract for your Nortel Networks product from a distributor or authorized reseller, contact the technical support staff for that distributor or reseller for assistance.

If you purchased a Nortel Networks service program, contact one of the following Nortel Networks Technical Solutions Centers:

<b>Technical Solutions Center</b>	<b>Telephone</b>
Europe, Middle East, and Africa	(33) (4) 92-966-968
North America	(800) 4NORTEL or (800) 466-7835
Asia Pacific	(61) (2) 9927-8800
China	(800) 810-5000

An Express Routing Code (ERC) is available for many Nortel Networks products and services. When you use an ERC, your call is routed to a technical support person who specializes in supporting that product or service. To locate an ERC for your product or service, go to [www12.nortelnetworks.com/](http://www12.nortelnetworks.com/) and click ERC at the bottom of the page.

---

# Chapter 1

## Management basics

---

This chapter summarizes basic operational procedures in a BayStack 420/425 Switch and provides an overview of switch management options. This chapter includes the following information:

- Overview of management tools (next)
- Setting IP parameters for management access to the switch ([page 22](#))
- Access levels and passwords ([page 25](#))

## Management tools

You can use three management tools to monitor and manage your BayStack 420/425 Switch:

- Device Manager software [page 21](#)
- Web-based management interface ([page 22](#))
- Console port interface (Refer to *Using the BayStack 425 Switch*.)

## Device Manager software

The Device Manager software for the BayStack 425-24T/48T switches is a Graphical User Interface (GUI) that allows you to manage a standalone switch or a single switch stack. Device Manager provides the options found in other management tools. It also has the ability to manage VLANs and MultiLink Trunks. You can display or print statistics and other data in one of three graph formats. To use Device Manager, you must have network connectivity to a management station running Device Manager on one of the supported platforms. You must also assign an IP address to the switch, as described in “[Setting the switch IP parameters](#)” on [page 22](#).

## Web-based management interface

The BayStack 420/425 Switch Web-based management interface is a Web-based Graphical User Interface that you use with a Web browser to manage a standalone switch or switch stack. You can access devices on your network from various locations within the network.

To access the Web-based management interface, you need a Web browser and an IP address for the switch or switch stack. To assign the IP address to the switch, refer to “[Setting the switch IP parameters](#)” in the next section.

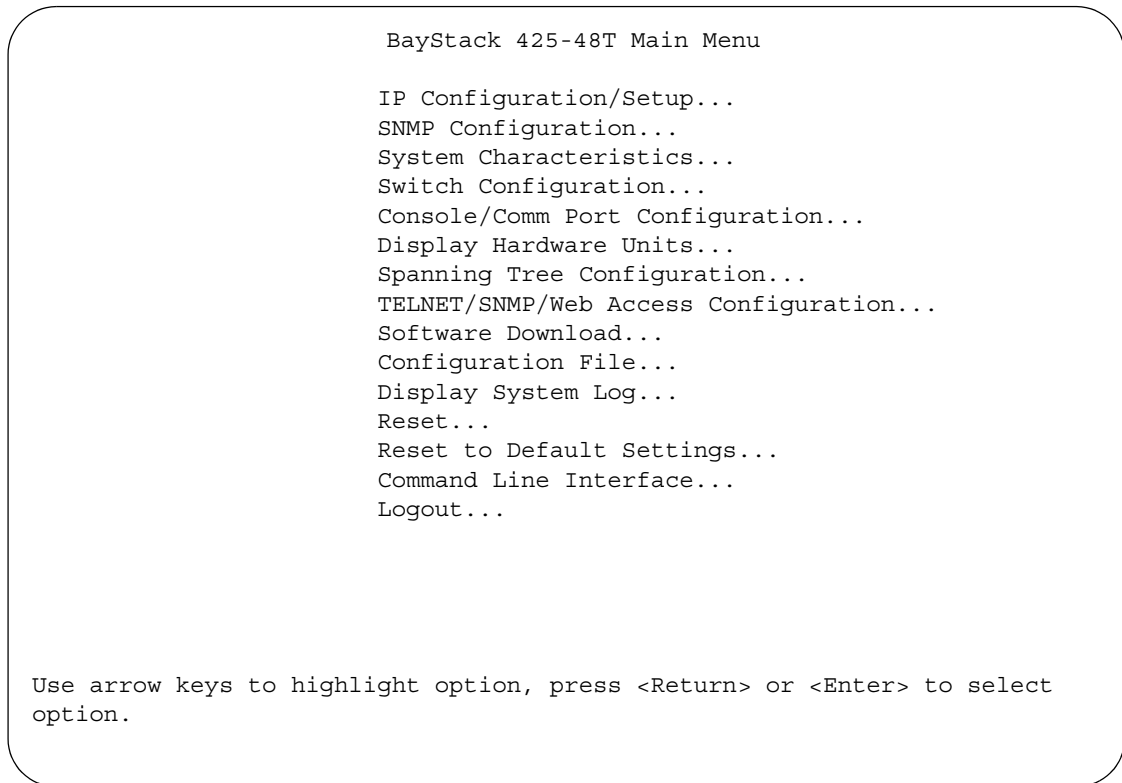
## Setting the switch IP parameters

To allow management access to the switch, you must assign IP parameters for the switch.

To set the IP parameters:

- 1** Connect a terminal to the Console port on the switch.
- 2** Set the terminal protocol as follows:
  - 9600 baud
  - No parity
  - 8 bits
  - 1 stop bit
  - Flow control set to Xon/Xoff
  - Window Terminal Emulator option set to no
  - Terminal Preferences: Function, Arrow, and Control keys active
  - Buffer size set to 24
- 3** Connect the switch to power.
- 4** After the Nortel Networks logo is displayed, press [Ctrl]-Y to display the Main Menu ([Figure 1](#)).

At first the screen displays the Main Menu for a standalone switch. Then, if the switch is part of a stack configuration, the screen is refreshed within 20 seconds to show the Main Menu for a stack configuration. The Main Menu for a stack configuration includes stack features (bold text in [Figure 1](#)).

**Figure 1** Main menu

- 5 Select IP Configuration/Setup (or press i) to display the IP Configuration/Setup menu ([Figure 2](#)).



**Note:** The default management VLAN in the BayStack 420/425 Switch is VLAN 1. To manage the switch, make sure the network management station is on the management VLAN or is connected to the management VLAN through routers.

**Figure 2** IP Configuration/Setup menu

```

BootP Request Mode:  [ BootP Disabled      ]

                                Configurable      In Use      Last BootP
                                -----
-----
In-Band Stack IP Address:  [ 0.0.0.0 ]      0.0.0.0      0.0.0.0
In-Band Switch IP Address: [ 134.177.224.102 ] 134.177.224.102 0.0.0.0
In-Band Subnet Mask:      [ 255.255.255.0 ] 255.255.255.0 0.0.0.0

Default Gateway:          [ 134.177.224.1 ] 134.177.224.1 0.0.0.0

IP Address to Ping:       [ 10.30.40.1 ]
Start Ping:               [ No ]

```

**6** Do one of the following, based on your configuration:

- For a standalone switch, enter the IP address of the switch in the In-Band Switch IP Address field.



**Note:** If the In-Band Subnet Mask field does not already contain a value when you enter the IP address in the In-Band Switch IP Address field, the switch software provides an in-use default value for the In-Band Subnet Mask field, based on the class of the entered IP address.

- For a stack configuration, enter the Stack IP address in the In-Band Stack IP Address field.



**Note:** The In-Band Switch IP Address field allows this switch to operate as a standalone switch. However, this field is not required for the operation of the stack. You cannot enter the same IP address in both fields.

**7** In the In-Band Subnet Mask field, enter the IP subnet mask address.**8** In the Default Gateway field, enter the default gateway address.



## Access levels and passwords

Access to management functions for BayStack 425 switches is controlled by passwords and community strings. Different passwords or community strings allow access to different levels of management functions.

Access to Device Manager requires entering community strings. Access to the Web-based interface requires a user identification and a password.



---

## Chapter 2

# Installing Device Manager software

---

Device Manager software is available on the Nortel Networks Services and Support Web site as a self-extracting executable file. This chapter provides instructions to install the Device Manager software in a Windows or UNIX environment.

## Accessing the Nortel Networks Web site

To access the Nortel Networks Services and Support Web site:

- 1 Go to the following URL:  
[www12.nortelnetworks.com/software](http://www12.nortelnetworks.com/software)
- 2 Under Switching Products, choose BayStack 420/425 Switch, and click Go.
- 3 Scroll down to BayStack 420/425 Switch Device Manager:
  - Java Device Manager v5830 for Unix (Solaris)
  - Java Device Manager v5830 for PC (95/98/NT/Win 2000/Win XP)
- 4 Follow the instructions in one of the next sections, depending on the platform on which you will install the software.

## Installing Windows

The minimum system requirements for installing Device Manager on Microsoft\* Windows NT, Windows 95, Windows 98, Windows 2000, Windows XP are:

- 266 Pentium II processor or above
- 128 MB DRAM

- 240 MB space on the hard disk

## Downloading the Device Manager Windows software

To obtain the Device Manager software from the Nortel Networks Web site:

- 1 Go to the following:  
[www.nortelnetworks.com/support](http://www.nortelnetworks.com/support)
- 2 Click on the product for which you want JDM.  
A page opens that displays all versions of that product line.
- 3 Click Software under the specific product you are working with.  
The software page opens.
- 4 Click the Java Device Manager version you want.  
The Software Detail Information page opens.
- 5 Click JDM for PC (95/98/NT/Win 2000/Win XP)  
A File Download dialog box opens that asks you to either run this program from its current location or to download the Device Manager software to your system.
- 6 Choose a directory to download the software to. The software download is a self-extracting .exe file.



**Note:** In the file name, *xxx* represents the current version of the Device Manager software.

---

## Installing the Device Manager Windows software

To install the Device Manager software in a Windows environment:

- 1 Close all programs.
- 2 Navigate to the directory on your system where you downloaded the Device Manager software.

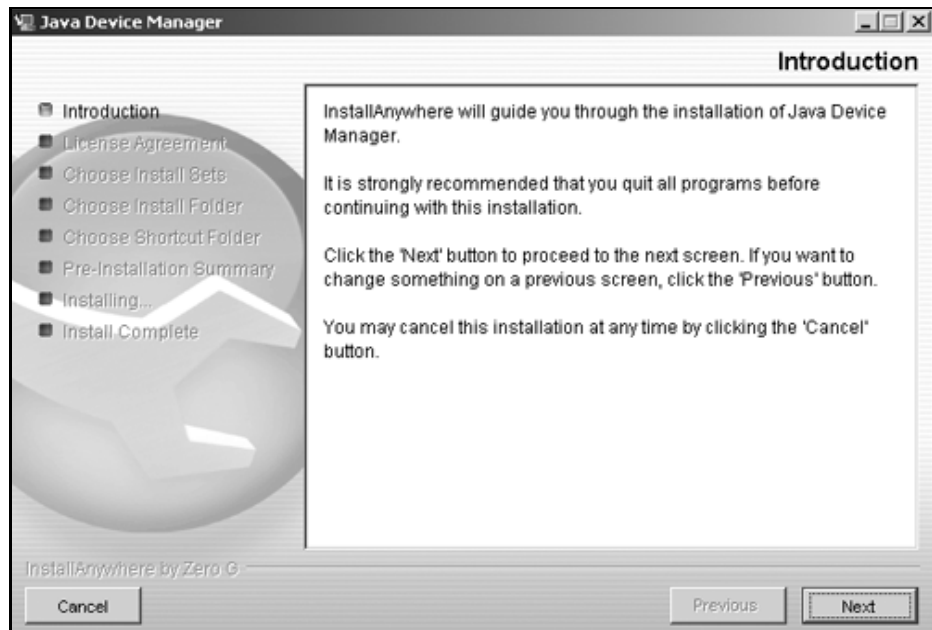
- 3 Double-click the jdm\_xxx.exe file.



**Note:** Always install a new DM application into a clean directory, and uninstall previous versions. A dm.ini file from a previous version of DM may be moved into this directory.

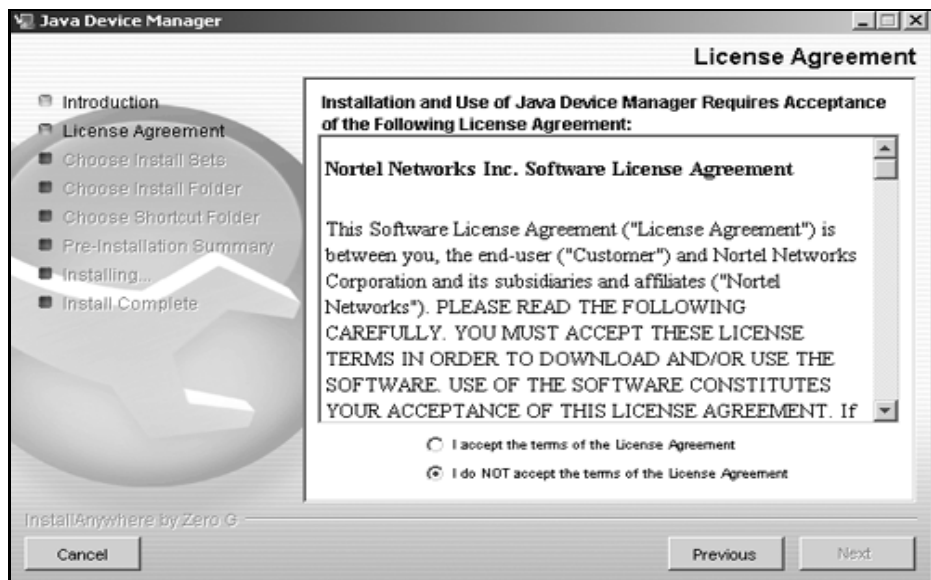
An Install screen opens that has text running through the screen. Then a Nortel dialog box opens with a ribbon on the bottom showing the progress. Finally, the InstallAnywhere\* Introduction dialog box opens (Figure 3).

**Figure 3** InstallAnywhere Introduction dialog box



- 4 Click Next to continue the installation process.

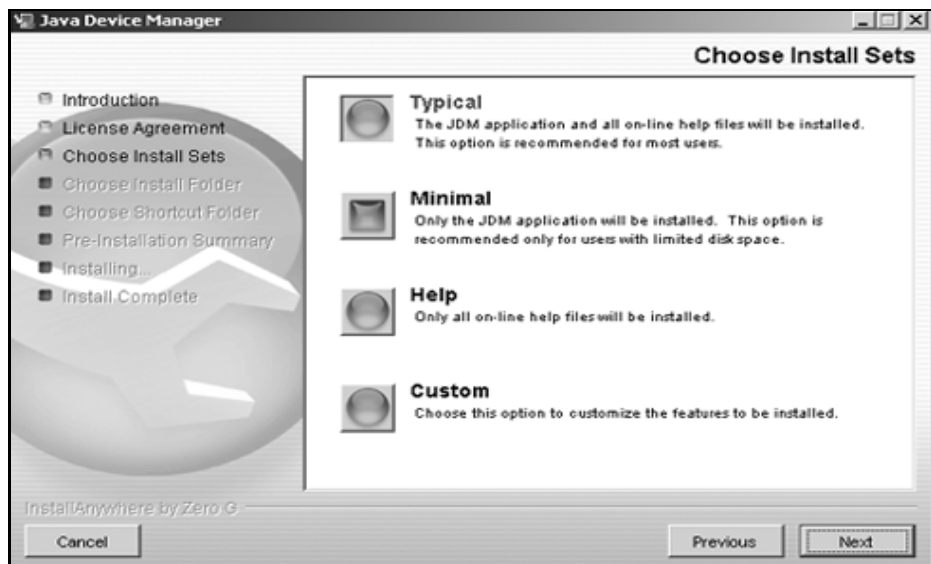
The License Agreement dialog box opens (Figure 4).

**Figure 4** License Agreement dialog box

5 Click I accept the terms of the license agreement as shown in [Figure 4](#).

6 Click Next.

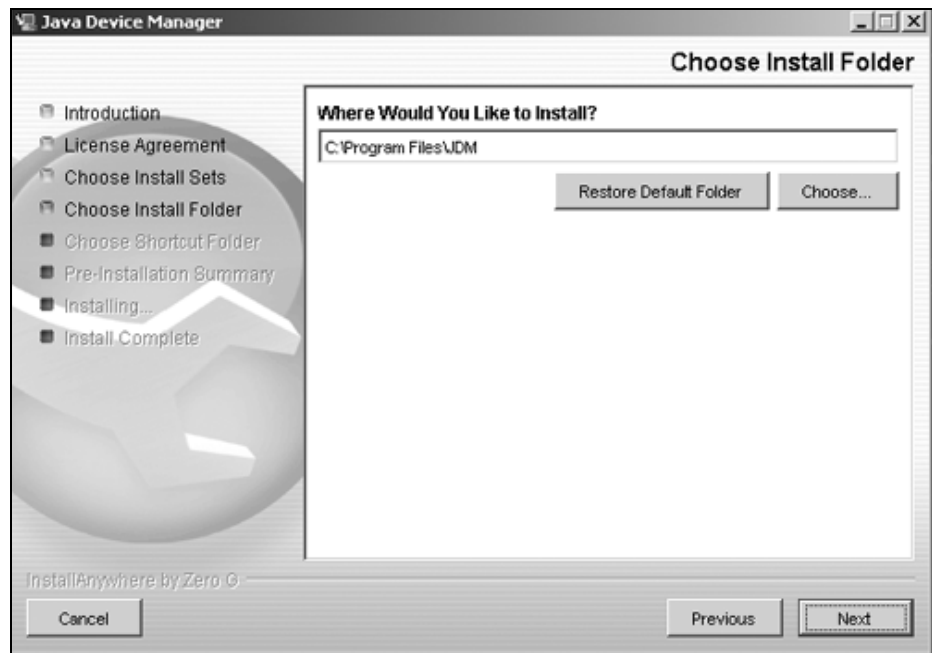
The Choose Install Set dialog box opens ([Figure 5](#)).

**Figure 5** Choose Install Set dialog box

- 7 Do *one* of the following:
  - Select Typical installation to install the common set features, as well as online help.
  - Select Minimal installation to select features to install (recommended for those with limited disk space).
  - Select Help to install only the online help.
  - Select Custom installation to customize the features prior to installation.
- 8 Click Next.

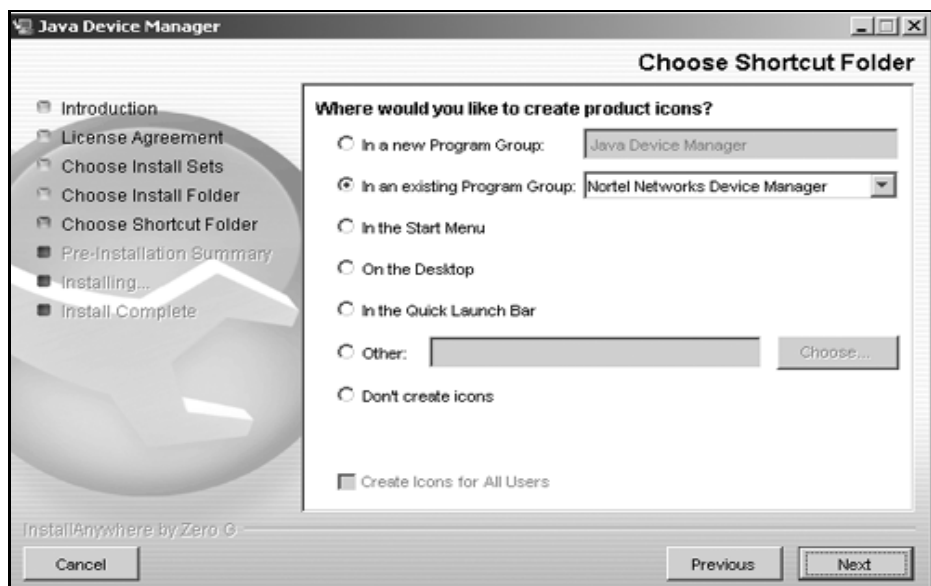
The Choose Install Folder dialog box opens (Figure 6).

**Figure 6** Choose Install Folder dialog box



- 9 Click Restore Default Folder or click Choose to select the storage path.
- 10 Click Next.

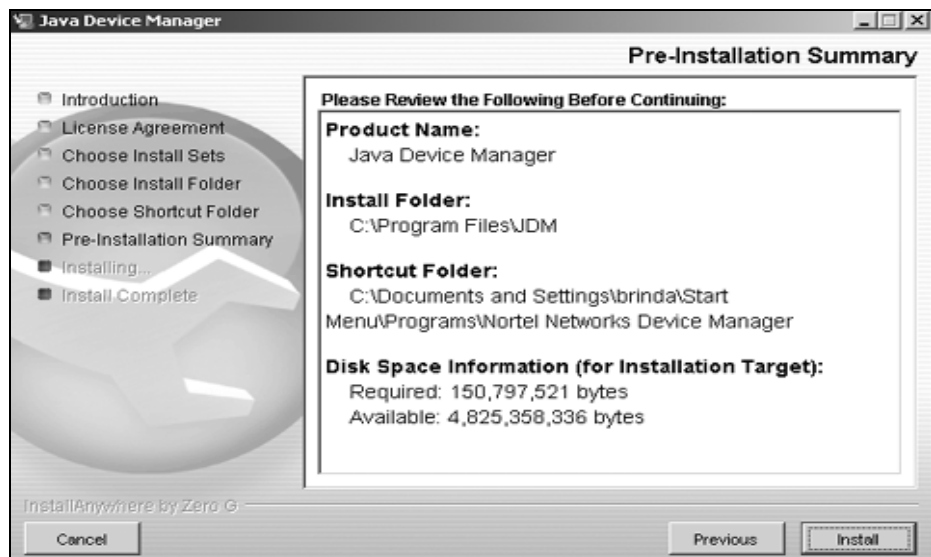
The Choose Shortcut Folder dialog box opens (Figure 7).

**Figure 7** Choose Shortcut Folder dialog box

11 Select your shortcut path(s).

12 Click Next.

The Pre-Installation Summary dialog box opens (Figure 8).

**Figure 8** Pre-installation Summary dialog box

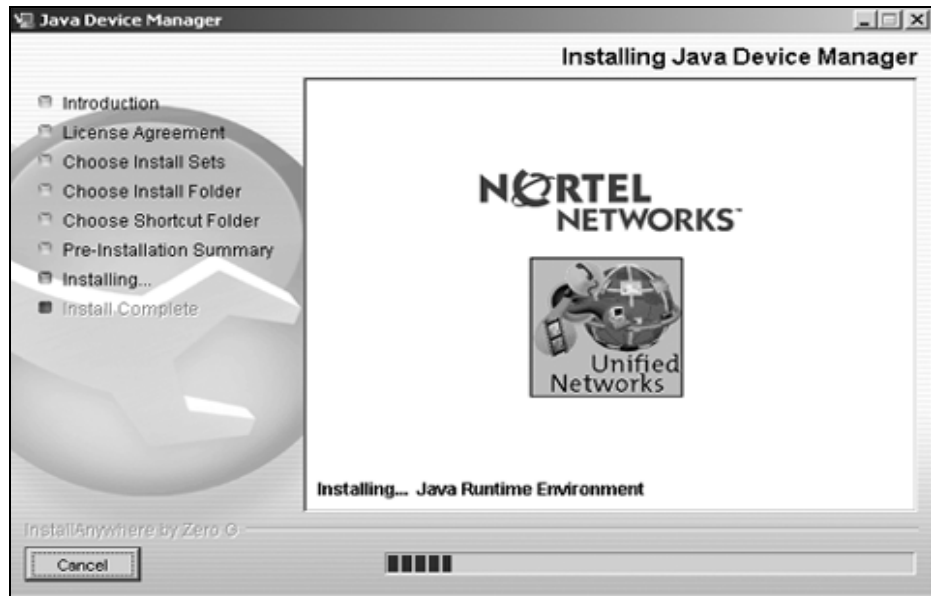


**13** Verify the folder, shortcut(s), and disk space required to install the software. Use the Previous button to return to the appropriate dialog box to make changes.

**14** Click Install.

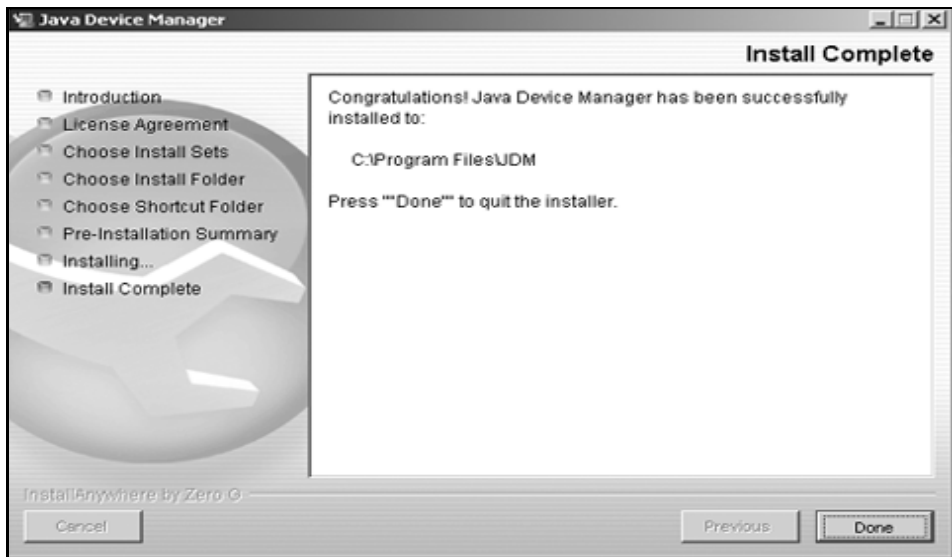
The installation process begins (Figure 9).

**Figure 9** Installing Java Device Manager dialog box



When the installation is complete, the Install Complete dialog box opens (Figure 10).

**Figure 10** Install Complete dialog box



**15** Click Done to exit the installation.

Device Manager is now completely installed on your machine.

## UNIX installation

The minimum system requirements for installing Device Manager in a UNIX SPARC\* workstation running the Sun\* Solaris\* 2.7.x (or higher) operating system

- 4 MB available in a temporary directory
- 240 MB free in the directory where you want to install the Device Manager software
- 128 MB DRAM

Installing the Device Manager software in a UNIX environment requires two or three steps, depending on the specific platform:

- 1** In a Solaris environment, install Solaris patches (next).

- For SPARC versions 5.6, 5.7, and 5.8, you can obtain the required OS patches from the Sun Microsystems Web site. If you need further assistance, refer to <http://sunsolve.sun.com>, the Sun Microsystems Web site.
  - You are required to install the Solaris patches only once. After the patches are installed, you can upgrade your system to later versions of Device Manager without installing the patches again.
- 2 Install the Device Manager software.

## Installing Solaris OS patches

To download the Solaris OS patches:

- 1 Use the `uname -a` command to determine the version of Solaris that is installed on your workstation.
- 2 Go to the following:  
<http://sunsolve.sun.com>

## Installing the Device Manager UNIX software

To install the Device Manager software in a UNIX environment:

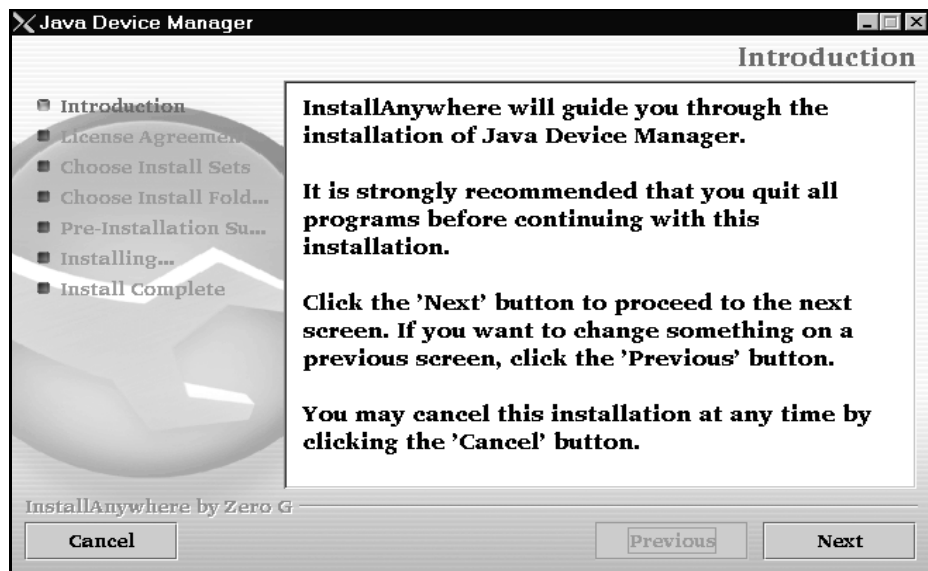
- 1 Close all programs.
- 2 Navigate to the directory on your system where you downloaded the Device Manager software.
- 3 Run the `jdm_xxxx_solaris_sparc.sh` file.



Note: Always install DM into a clean directory.

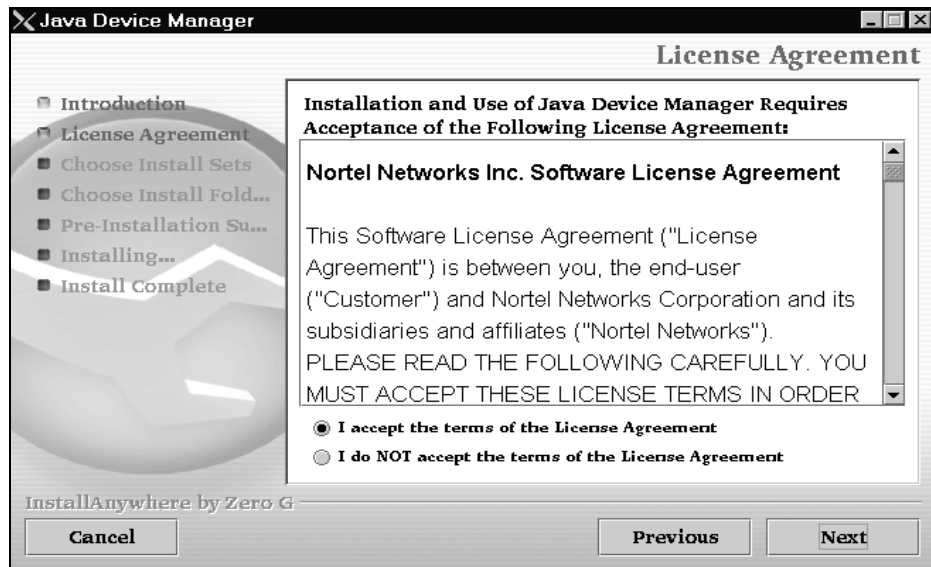
---

An Install screen opens that has text running through the screen. Then a Nortel dialog box opens with a ribbon on the bottom showing the progress. Finally, the InstallAnywhere\* Introduction dialog box opens ([Figure 11](#)).

**Figure 11** InstallAnywhere Introduction dialog box

- 4 Click Next to continue the installation process.

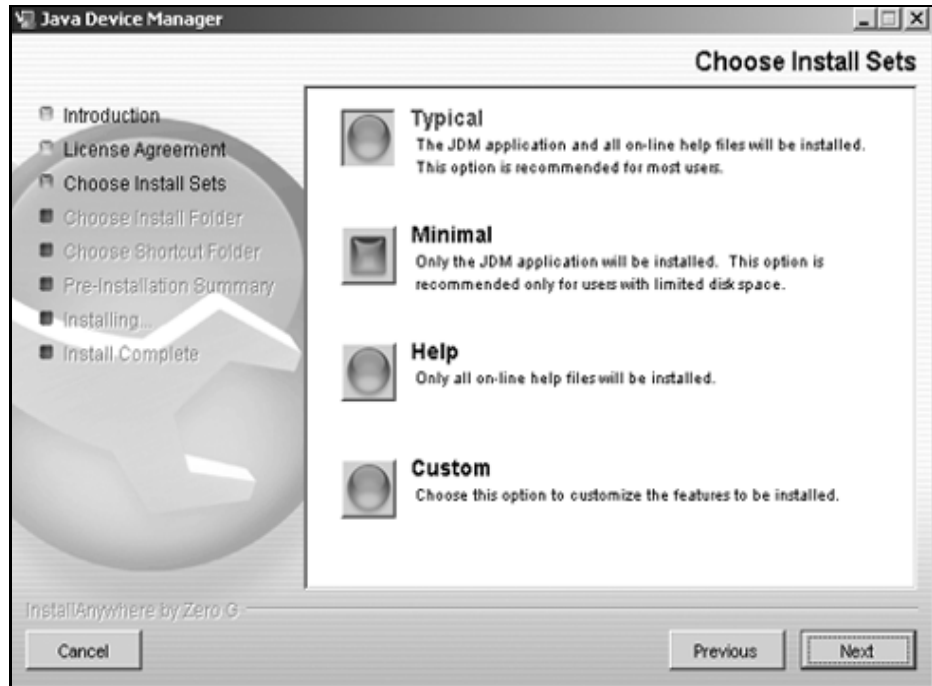
The License Agreement dialog box opens (Figure 12).

**Figure 12** License Agreement dialog box

- 5 Click I accept the terms of the license agreement as shown in Figure 12.

**6** Click Next.

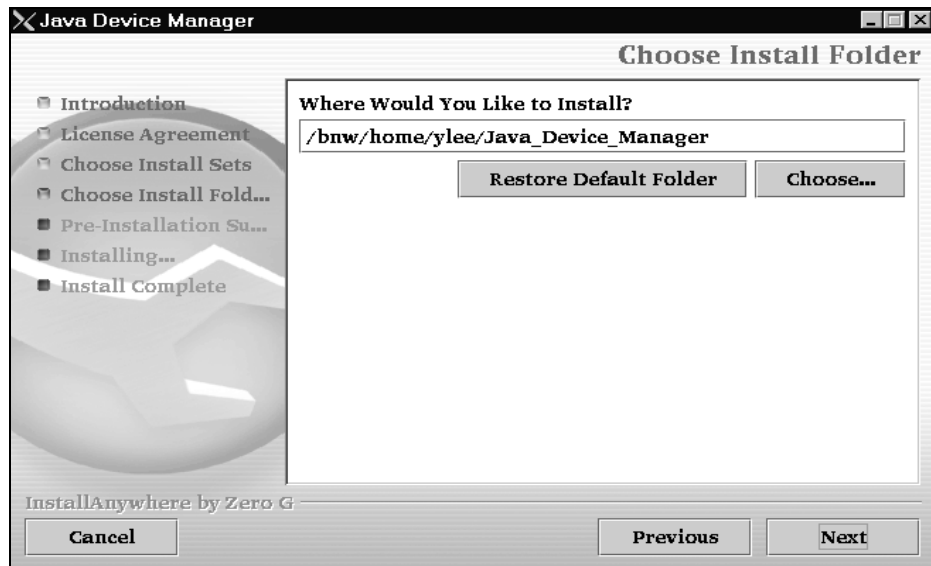
The Choose Install Set dialog box opens (Figure 13).

**Figure 13** Choose Install Set dialog box**7** Do *any* of the following:

- Select Typical installation to install the common set features, as well as online help.
- Select Minimal installation to select features to install (recommended for those with limited disk space).
- Select Help to install only the online help.
- Select Custom installation to customize the features prior to installation.

**8** Click Next.

The Choose Install Folder dialog box opens (Figure 14).

**Figure 14** Choose Install Folder dialog box

9 Click Restore Default Folder or click Choose to select the storage path.

10 Click Next.

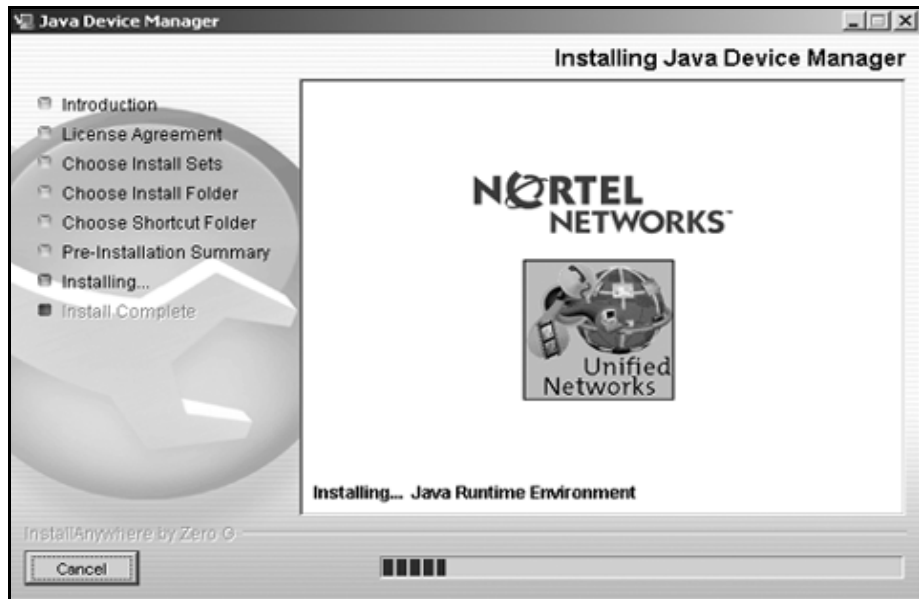
The Pre-Installation Summary dialog box opens (Figure 15).

**Figure 15** Pre-installation Summary dialog box

- 11 Verify the folder, shortcut(s), and disk space required to install the software. Use the Previous button to return to the appropriate dialog box to make changes.
- 12 Click Install.

The installation process begins (Figure 16).

**Figure 16** Installing Java Device Manager dialog box



When the installation is complete, the Install Complete dialog box opens (Figure 17).

**Figure 17** Install Complete dialog box



**13** Click Done to exit the installation.

Device Manager is now completely installed on your machine.



---

## Chapter 3

# Device Manager basics

---

This chapter describes basic procedures for using the Device Manager software. The chapter includes the following information:

- Instructions to start Device Manager, set the Device Manager properties, and open a device (next)
- A summary of the Device Manager user interface features and how to use them (starting on [page 48](#))
- Instructions to view statistics and display graphs ([page 58](#))
- Instructions to use Device Manager to access a switch ([page 65](#))
- Information about the trap log ([page 65](#))
- Information about online Help ([page 66](#))

## Starting Device Manager

To start Device Manager:

- ➔ Do one of the following, depending upon your operating system environment:
- In a Microsoft\* Windows\* environment, from the Windows taskbar choose Start > Programs > Nortel Networks Device Manager > DM.
  - In a UNIX environment, verify that the Device Manager installation directory is in your search path; then enter:

**JDM**

The initial Device Manager window opens ([Figure 18](#)).



**Note:** On startup, Device Manager performs a DNS lookup for the machine on which it is running. If the DNS lookup is slow or fails, the initial Device Manager window may take up to 30 seconds to open.

---

**Figure 18** Device Manager window



## Setting the Device Manager properties

Device Manager communicates with the BayStack 420/425 Switch using Simple Network Management Protocol (SNMP). The software is shipped with default values set for important communication parameters, such as the polling interval, timeout, and retry count. You may want to set the parameters before you open a device to manage.

To set the Device Manager properties:

- 1 Choose Device > Properties.

The Properties dialog box opens ([Figure 19](#)).

**Figure 19** Properties dialog box

**Device Manager 563b07 - Properties**

**Polling**

Status Interval: 20 secs

(If Traps, Status Interval: 60 secs)

Hotswap Detect every: 1 intervals

Enable

**SNMP**

Retry Count: 1 1..5

Timeout: 5 3..30 secs

Trace

Listen for Traps

Max Traps in Log: 500 1..10000

Trap Port: 162

Confirm row deletion

Default Read Community: public

Default Write Community: private

Ok Close Help

- 2 Type information and select check boxes.
- 3 Click OK.

[Table 1](#) describes items in the Properties dialog box.

**Table 1** Properties dialog box items

Area	Item	Description
Sr oqj	Status Interval	Interval at which status information is gathered (default is 20 seconds). For a full stack, set this interval to 60 seconds.
	(If Traps, Status Interval: )	Interval at which statistics and status information are gathered when traps are enabled. The default is 60.

**Table 1** Properties dialog box items (continued)

Area	Item	Description
	Hotswap Poll Interval	The interval at which Device Manager polls for module information. The default is 1 interval.
	Enable	Enables (true) or disables (false) periodic polling of the device for updated status. If polling is disabled, the chassis status is updated only when you click Refresh on the Chassis tab.
<b>VQP S</b>	Retry Count	Number of times Device Manager sends the same polling request if a response is not returned to Device Manager. You may want to set this field to three or four.
	Timeout	Length of each retry of each polling waiting period. When you access the device through a slow link, you may want to increase the timeout interval and then change the Retransmission Strategy to superlinear.
	Trace	The trace field is used to enable and disable SNMP tracing. When Trace is selected, SNMP protocol data units (PDUs) are displayed in the Device > Log dialog box.
	Listen for Traps	When selected (enabled), Device Manager will listen for traps.
	Max Traps in Log	The specified number of traps that may exist in the trap log. The default is 500.
	Trap Port	Specifies the UDP port that Device Manager will listen to receive SNMP traps.
	Confirm row deletion	A dialog box displays when checked, before deleting a row.
	Default read community	Specifies the default read community.
Default write community	Specifies the default write community.	

## Opening a device

“Opening” a device displays the device view, a picture of the device. To open the device view, you must enter community strings that determine the access level granted to the device. [Table 2](#) shows the default access community strings for the Device Manager software.

**Table 2** SNMP community string default values

Access level	Description
Read-only	public
Read/write	private

To display the device view:

**1** Do one of the following:

- Choose Device > Open.
- Choose Device > Open Last, and select an IP address from the list.
- Click the folder icon in the Device Manager window.



- Press [Ctrl] + O.

The Open Device dialog box opens ([Figure 20](#)).

**Figure 20** Open Device dialog box



Table 3 describes the items in the Open Device dialog box.

**Table 3** Open Device dialog box fields

Field	Description
Device Name	Either an IP address or a DNS name for the device, entered by the user.
Read Community	SNMP read community string for the device. Default is public (displayed as *****). The entry is case-sensitive.
Write Community	SNMP write community string for the device. Default is private (displayed as *****).The entry is case-sensitive.
v3 Enable	When selected (enabled), Open Device dialog box will display SNMPv3 options.
User Name	Indicates the name of the user
Authentication Protocol	Identifies the authentication protocol used
Authentication Password	Specifies the current authentication password
Privacy Protocol	Identifies the privacy protocol
Privacy Password	Specifies the current privacy password

- 2 In the Device Name text box, type the DNS name or IP address of the device.
- 3 In the Read Community and Write Community text boxes, type the proper community strings ([Table 2 on page 45](#)).

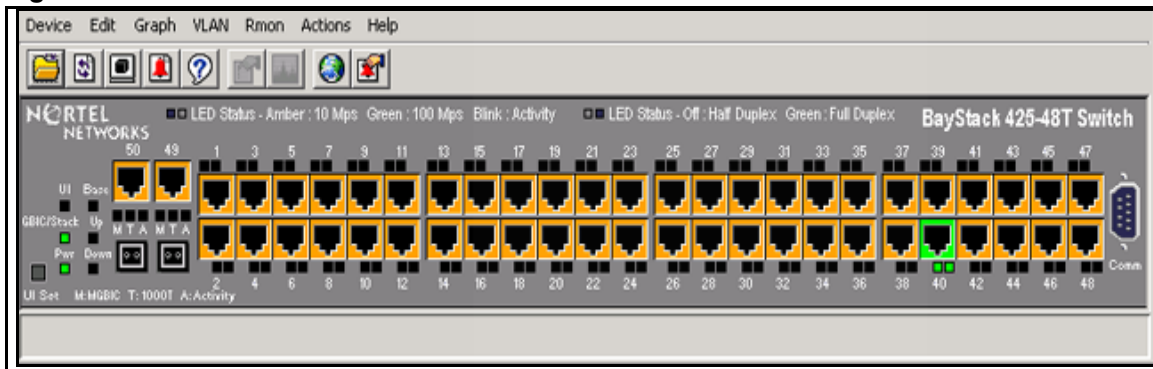


**Note:** To gain read/write/all access to a device in Device Manager, you must enter the read/write/all community string for both the Read Community and Write Community strings.

- 4 Click Open.

Device Manager automatically determines what version of software the selected device is running and displays the appropriate Device Manager dialog boxes. The Device Manager window opens, showing a picture of the device ([Figure 21](#)) that represents the physical features of the device.

**Figure 21** Device view

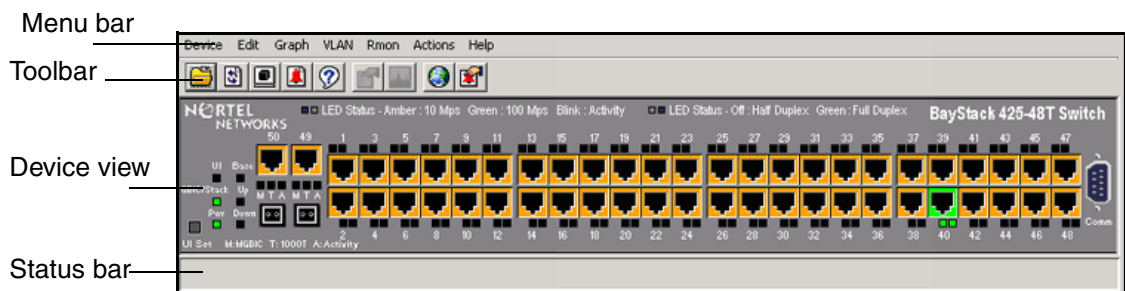


## Device Manager window

The Device Manager window ([Figure 22](#)) has the following parts:

- Menu bar
- Toolbar
- Device view
- Status bar

**Figure 22** Parts of the Device Manager window



### Menu bar

Use the menu bar to set up and operate Device Manager ([Table 4](#)).







**Table 4** Menu bar commands

Command	Description
Device	Opens the Open Device dialog box. It also allows you to <ul style="list-style-type: none"> <li>• Set the Properties used during a Device Manager session</li> <li>• Refresh the status of the currently viewed device</li> <li>• Telnet to a device</li> <li>• View SNMP traps.</li> </ul>
Edit	Opens edit dialog boxes for selected objects in the device view. This command also opens dialog boxes for managing files, running diagnostic tests and configuring data for selected chassis.
Graph	Opens statistics and graphing dialog boxes for the selected object.
VLAN	Opens dialog boxes for managing VLANs, spanning tree groups (STGs), and Multi-Link Trunks.
RMON	Opens RMON configuration and monitoring dialog boxes.
Actions	Provides quick access to the Web Management Software Home page.
Help	Opens Online Help topics for Device Manager and provides a legend for the port colors in the device view.






## Toolbar

The toolbar contains buttons that provide quick access to commonly used commands and some additional actions ([Table 5](#)).

**Table 5** Toolbar buttons

Button	Name	Description	Menu bar equivalent
	Open Device	Opens the Open Device dialog box.	Device > Open
	Refresh Device Status	Refreshes the device view information.	Device > Refresh Status
	Trap Log	Opens the trap log.	Device > Trap Log
	Help	Opens Online Help in a Web browser. <sup>1</sup>	Help > Device

**Table 5** Toolbar buttons

Button	Name	Description	Menu bar equivalent
	Edit Selected	Displays configuration data for the selected chassis object.	Edit > Unit Edit > Chassis Edit > Port
	Graph Selected	Opens statistics and graphing dialog boxes for the selected object	Graph > Chassis Graph > Port
	Home Page	Opens the Web Management Software Home Page	Actions > Open Home Page
	Telnet	Opens a Telnet session.	Device > Telnet
	Alarm Manager	Opens the Rmon Alarm Manager.	Rmon > Alarm Manager

1 If the Online Help does not launch, refer to [page 66](#).

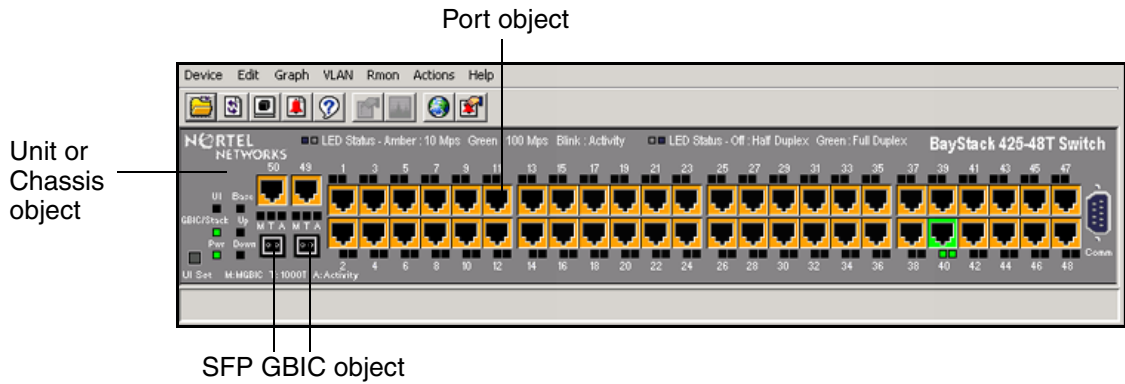
## Device view

The device view ([Figure 23](#)) allows you to determine at a glance the operating status of the various units and ports in your hardware configuration. You also use the device view to perform management tasks on specific objects.

### Selecting objects

The types of objects contained in the device view are:

- A standalone switch (called a unit in the menus and dialog boxes)
- A switch stack (called a chassis in the menus and dialog boxes)
- A port(including the GBIC port)

**Figure 23** Objects in the device view

## Selecting a single object

To select a single object:

- Click the edge of the object.

The object is outlined in yellow, indicating that it is selected. Subsequent activities in Device Manager refer to the selected object.

## Selecting multiple objects

To select multiple objects of the same type (such as ports or switches of the same type):

- Do one of the following:
  - For a block of contiguous ports, drag to select the group of ports.
  - For multiple ports or switches in the stack, [Ctrl]-click on the objects.

To select all the ports in a standalone switch or in a switch stack:

- Choose Edit > Select > Ports.

To select all the “units” (switches, but not ports):

- Choose Edit > Select > Units.

To select an entire stack:

- Choose Edit > Select > Chassis.

## Viewing information about an GBIC port

To view information about an GBIC port:

- 1 Select the GBIC.
- 2 Choose Edit > Port.

The Port dialog box opens with the Interface tab displayed ([Figure 24](#)). The Interface tab describes the GBIC installed in the switch.

Figure 24 Port dialog box for a GBIC

10.10.54.26 - Port 1/1

Interface | VLAN | STG | EAPOL

Index: 1

Name: This is port number 1

Descr: Nortel Networks BayStack 425\_48T Ethernet Switch Module - Port 1

Type: ethernet-csmacd

MTU: 1514

PhysAddress: 00:0f:6a:7d:c2:e0

AdminStatus:  up  down

OperStatus: down

LastChange: 39 days, 05h:01m:00s

LinkTrap:  enabled  disabled

Speed: 100000000

AutoNegotiate

AdminDuplex:  half  full

OperDuplex: full

AdminSpeed:  none  mbps10  mbps100  mbps1000

OperSpeed: 100 mbps

AutoNegotiationCapability: 10Half,10Full,100Half,100Full

AutoNegotiationAdvertisements:

<input checked="" type="checkbox"/> 10Half	<input checked="" type="checkbox"/> 10Full	<input checked="" type="checkbox"/> 100Half
<input checked="" type="checkbox"/> 100Full	<input type="checkbox"/> 1000Half	<input type="checkbox"/> 1000Full
<input type="checkbox"/> PauseFrame	<input type="checkbox"/> AsymmPauseFrame	

MTid: 0

IsPortShared: portNotShared

PortActiveComponent: fixedPort

Apply Refresh Close Help...

## LEDs and ports

The color of LEDs in the device view is the same as the colors of the LEDs on the physical switch. However, the device view does not show blinking activity of the LEDs.

For a full description of the LEDs for the BayStack 420/425 Switch, refer to *Using the BayStack 420/425 Switch, Software Release 3.1*.

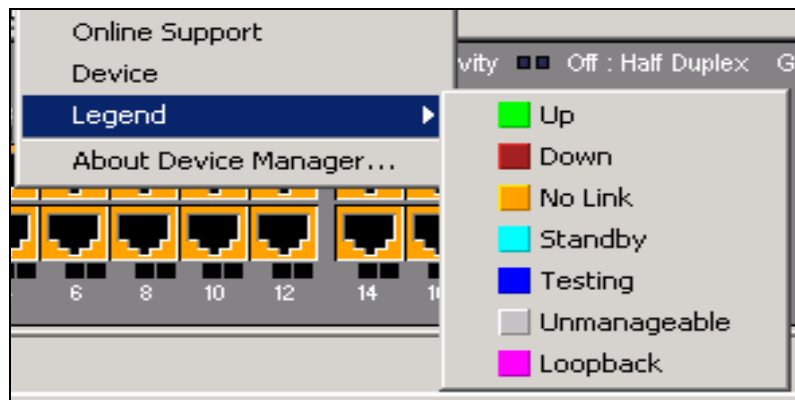
The ports on the device view are color coded to show port status. [Table 6](#) shows the status assigned to each color.

**Table 6** Port color codes

Color	Description
Green	Port is operating.
Red	Port has been manually disabled.
Orange	Port has no link.
Gray	Port is unmanageable.

In addition, the Help menu provides a legend that identifies the port colors and their meanings ([Figure 25](#)).

**Figure 25** Port color legend



## Shortcut menus

Each object in the device view has a shortcut menu that opens when you right-click a selected object. The switch shortcut menu (Figure 26) provides access to basic hardware information about the switch and to the graphing dialog boxes for the switch.

**Figure 26** Shortcut menu

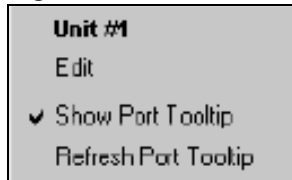


Table 7 describes the commands on the switch unit shortcut menu

**Table 7** Switch unit shortcut menu command

Command	Description
Edit	Opens a read-only dialog box that provides basic hardware information about the switch.
Show Port Tooltip	Indicates that the tooltip function is active. When unchecked, the tooltip function is disabled.
Refresh Port Tooltip	Refreshes the tooltip information.

The port shortcut menu (Figure 27) provides a faster path for editing and graphing a single port; however, you can access the same options using the menu bar or the toolbar.

**Figure 27** Port shortcut menu

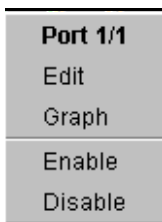


Table 8 describes the commands on the port shortcut menu.

**Table 8** Port shortcut menu commands

Command	Description
Edit	Opens a dialog box that allows you to set operating parameters for the port.
Graph	Opens a dialog box that displays statistics for the port and allows you to display the statistics as a graph.
Enable	Administratively brings a port up.
Disable	Administratively shuts down a port. The color of the port changes to red in the device view.






## Status bar

The status bar displays error and informational messages from the software application. These messages are not related to the device being managed.

## Using the buttons in Device Manager dialog boxes



[Table 9](#) describes buttons in Device Manager dialog boxes. Not all buttons appear in all dialog boxes.

**Table 9** Device Manager buttons

Button	Name	Description
	Insert	Opens a dialog box to create a new entry for a table; then from the dialog box, inserts the new entry in the table.
	Copy	Copies selected cells from a table.
	Paste	Pastes copied values to a currently selected table cell.
	Reset Changes	Causes changed (but not applied) fields to revert to their previous values.
	Print Table or Print Graph	Prints the table or graph that is displayed.



**Table 9** Device Manager buttons (continued)

Button	Name	Description
	Stop	Stops the current action (compiling, saving, and so forth). If you are updating or compiling a large data table, the Refresh button changes to a Stop button while this action is taking place. Clicking the Stop button interrupts the polling process.
	Export Data	Exports information to a file you specify. You can then import this file into a text editor or spreadsheet for further analysis.

## Editing objects

You can edit objects and values in the Device Manager device view in the following ways:

- Select an object and, on the toolbar, click the Edit Selected button.



The edit dialog box opens for that object.

- From a switch or port shortcut menu, choose Edit. The Edit dialog box opens for that object.

When you change the value in a box, the changed value is displayed in **bold**. However, changes are not applied to the running configuration until you click Apply.



**Note:** Many dialog boxes contain a Refresh button. After you apply changes to fields, click Refresh to display the new information in the dialog box.

## Working with statistics and graphs

Device Manager collects a wide range of statistics for each switch, the stack (chassis), and each port. You can view and graph statistics for a single object or multiple objects. For information about the statistics tracked for the switch and ports, refer to *Using the BayStack 420/425 Switch, Software Release 3.1*.

This section describes the types of statistics and graphs available, the graph dialog boxes, and the procedure for creating a graph.

### Types of statistics

The data tables in the statistics dialog boxes list the counters, or categories of statistics being gathered, for the specified object. For example, the categories for ports include Interface, Ethernet Errors, Bridge, and Rmon. Each category can be associated with six types of statistics ([Table 10](#)).

**Table 10** Types of statistics

Statistic	Description
AbsoluteValue	The total count since the last time counters were reset. A system reboot resets all counters.
Cumulative	The total count since the statistics window was first opened. The elapsed time for the cumulative counter is displayed at the bottom of the graph window.
Average	The cumulative count divided by the cumulative elapsed time.
Minimum	The minimum average for the counter for a given polling interval over the cumulative elapsed time.
Maximum	The maximum average for the counter for a given polling interval over the cumulative elapsed time.
LastValue	The average for the counter over the last polling interval.

### Types of graphs

With Device Manager, you can create line, area, bar, and pie graphs. [Figure 28](#), [Figure 29](#), [Figure 30](#), and [Figure 31](#) illustrate the different graph styles, respectively.

Figure 28 Line graph

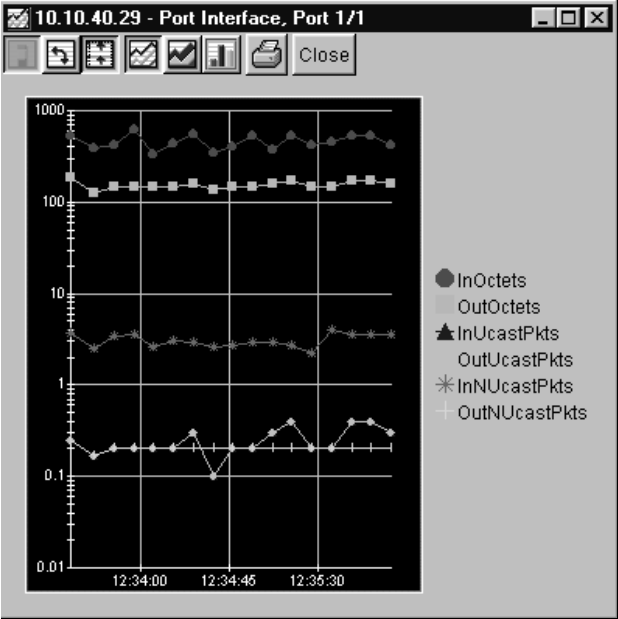
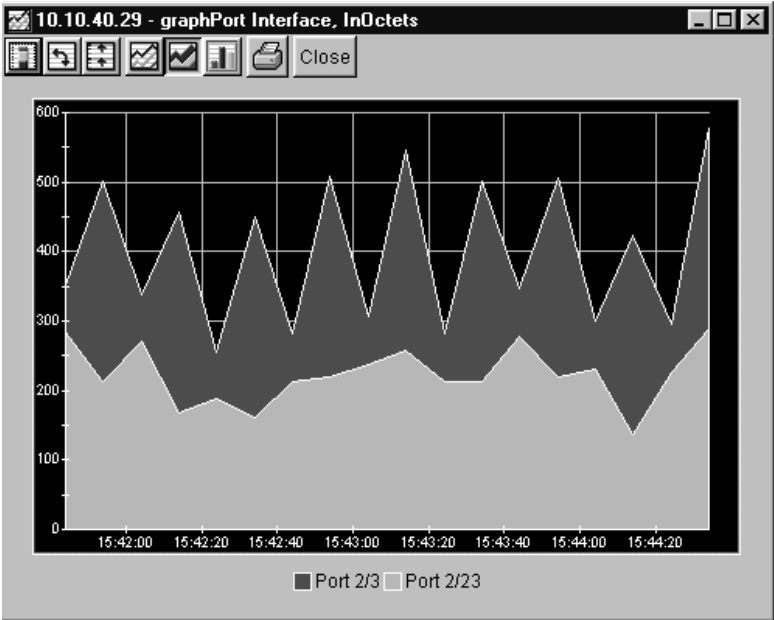
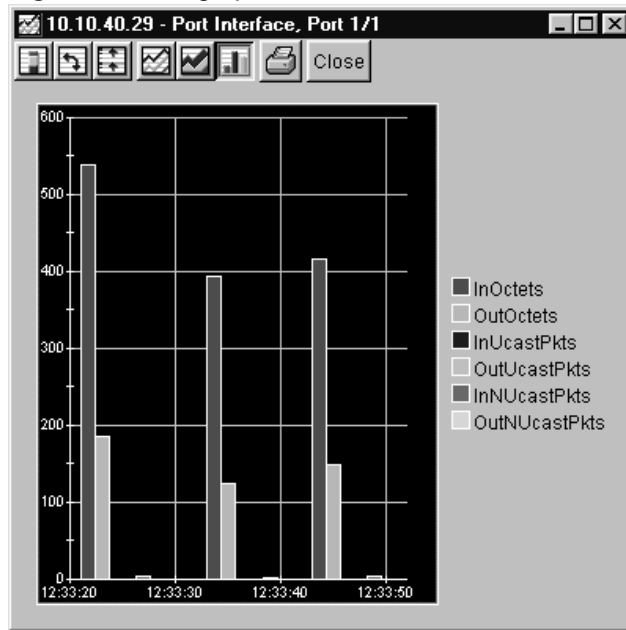


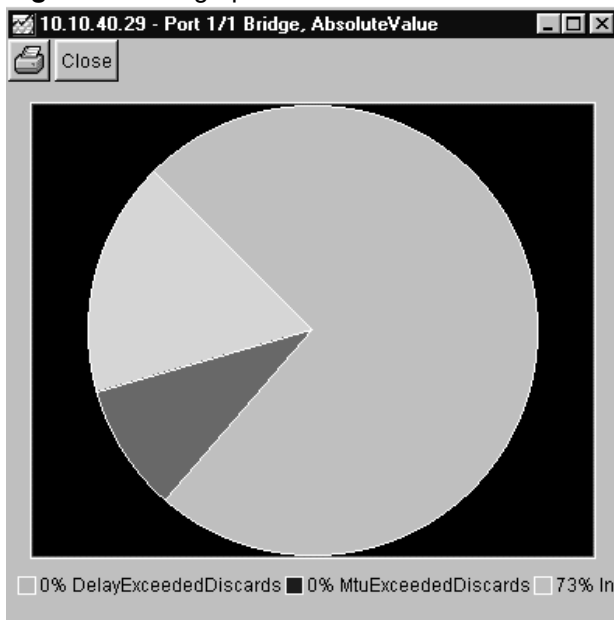
Figure 29 Area graph



**Figure 30** Bar graph



**Figure 31** Pie graph



## Statistics for single and multiple objects

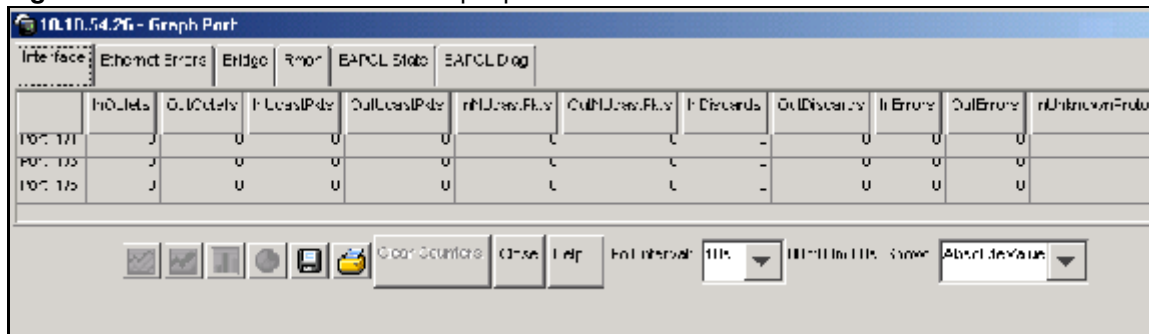
Statistics for a selected object or objects are displayed in the Statistics dialog box.

The dialog box for a single object shows all six types of statistics for each counter (Figure 32).

**Figure 32** Interface statistics for a single port

	Absolute value	Cumulative	Average/sec	Minimum/sec	Maximum/sec	LastVal/sec
INPkts	0					
OUTPkts	0					
INUnicastPkts	0					
OUTUnicastPkts	0					
INMulticastPkts	0					
OUTMulticastPkts	0					
INDiscards	0					
OUTDiscards	0					
INErrors	0					
OUTErrors	0					
INUnknownPkts	0					

The statistics dialog box for multiple objects shows a single type of statistics (Table 10) for the selected objects. For example, Figure 33 shows LastValue statistics for the selected ports.

**Figure 33** Interface statistics for multiple ports

To change the type of statistics displayed, select a different type from the show list at the bottom of the dialog box.

The statistics are updated based on the poll interval shown at the bottom of the dialog box. You can select a different polling interval.

Buttons for bar, pie, and line graphs are located at the bottom of a statistics dialog box. See the next section, [“Viewing statistics as graphs,”](#) for instructions to use these buttons.

You can export the statistics to a tab-separated file format and import the file into other applications. To export the information, use the Export Data button below the table.



## Viewing statistics as graphs

To create a graph for an object:

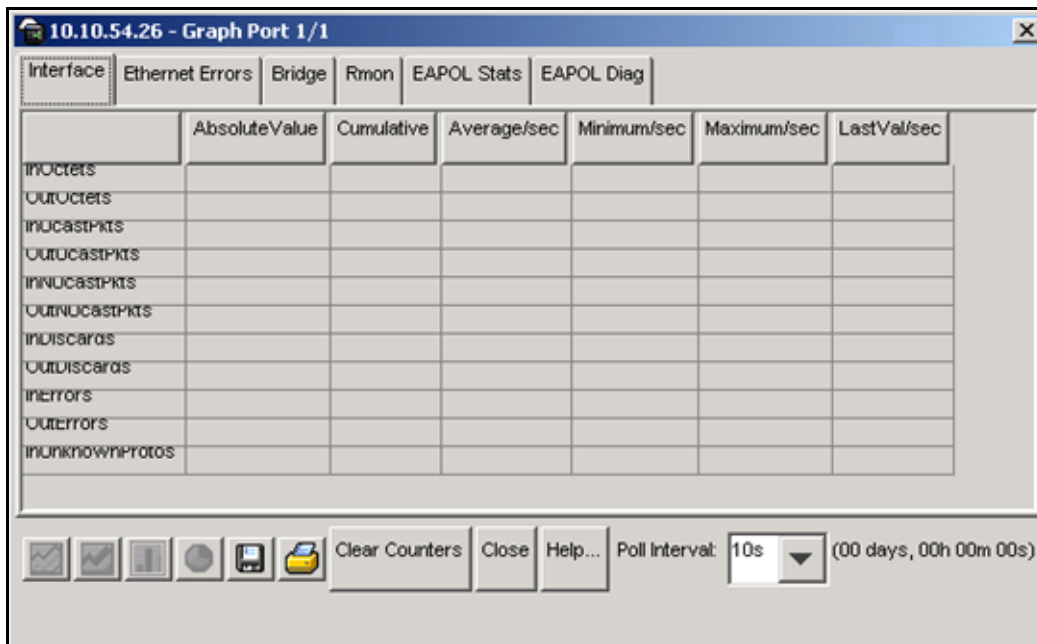
- 1 Select the object or objects to be graphed (see [“Selecting objects” on page 50](#)).
- 2 Do one of the following:
  - On the toolbar, click Graph Selected.



- From the shortcut menu for the object, choose Graph.
- From the main menu, choose Graph > Chassis or Graph > Port.

A statistics dialog box opens with tabs for different categories of statistics for the selected object (Figure 34).

**Figure 34** Statistics dialog box for a port



- 3 Select a tab for the group of statistics you want to view.
- 4 On the displayed data table, drag to select the cells you want to graph. (They must be in the same row or column.)
- 5 Click one of the graph buttons at the bottom of the dialog box (see [“Types of graphs” on page 58](#)).

A graph dialog box opens for the selected graph type.

- 6 To print a copy of the graph, click Print.



Buttons at the top of the graph dialog boxes for line, area, and bar graphs allow you to change the orientation of the graph, change the scale, or change the graph type. [Table 11](#) describes the buttons in the graph dialog boxes.

**Table 11** Graph dialog box buttons

Button	Name	Description
A small icon showing a bar chart with two bars stacked on top of each other.	Stacked	“Stacks” data quantities instead of displaying them side-by-side.
A small icon showing a square with a curved arrow indicating a 90-degree rotation.	Horizontal	Rotates the graph 90 degrees.
A small icon showing a bar chart with a logarithmic scale indicated by a curved arrow.	Log Scale	Changes the scale of the x-axis (of an unrotated graph) from numeric to logarithmic.
A small icon showing a line graph with a rising line.	Line Chart	Converts an area graph or bar graph to a line graph.
A small icon showing an area graph with a rising line.	Area Chart	Converts a line graph or bar graph to an area graph.
A small icon showing a bar chart with two bars.	Bar Chart	Converts a line graph or area graph to a bar graph.



## Telnetting to a switch

From Device Manager, you can initiate a Telnet session to the console interface for the switch or stack you are currently accessing.

To Telnet to a switch:

→ Do one of the following:

- From the Device Manager main menu, choose Device > Telnet.
- On the toolbar, click the Telnet button.



A Telnet window to the switch opens.

## Trap log

You can configure a BayStack 420/425 Switch to send SNMP generic traps. When Device Manager is running, any traps received are recorded in the trap log. You set the maximum number of entries in the trap log using the Properties window (page 42). The default number of trap log entries is 500.

To view the trap log:

→ Do one of the following:

- On the toolbar, click the Trap Log button.



- From the Device Manager Main Menu, choose Device > Trap Log.



**Note:** When you operate Device Manager from a UNIX platform, you must be logged in as root in order to receive traps.

By default, traps are sent in SNMP V2c format. However, if you are using an older network management system (NMS), one that supports only SNMP V1 traps (HP OpenView), you can specify that the traps be sent in V1 format.

Management stations operating with Device Manager are automatically added to trap receivers.

For more information about traps and trap receivers, refer to *Using the BayStack 420/425 Switch, Software Release 3.1*.

## Online Help

Online Help in Device Manager is context-sensitive. You use a Web browser to display online Help. The Web browser should launch automatically when you click the Help button. If the Help topic you are accessing is not displayed in your browser, exit the existing browser session and click the Help button again. If, for some reason, the Web browser does not launch, the default locations of the Help files are the directories listed in [Table 12](#).

**Table 12** Help file locations

Platform	Default path
Windows 95, Windows 98, Windows 2000/XP, or Windows NT	JDM Directory\help\pp8k_basics\dmhelp.html
UNIX	JDM installed directory/help/pp8k_basics/dmhelp.html

---

## Chapter 4

# Web management interface basics

---

The BayStack 420/425 Switch includes a Web management interface that lets you monitor your switch through a World Wide Web browser from anywhere on the network. The Web interface provides some of the more popular monitoring and configuration features of the Device Manager software.

This chapter provides an overview of the Web management interface and its navigation features. For information about specific Web management pages, check the online Help in the Web management interface. For information about using the Web management interface to configure and manage the switch, refer to *Using Web-Based Management for the BayStack 420/425, Software Release 3.1*.

This chapter contains information about the following topics:

- Requirements (next)
- Accessing your switch through the Web interface ([page 68](#))
- Security ([page 74](#))

## Requirements

To use the Web-based management interface you need:

- A computer connected to any of the network ports
- One of the following Web browsers installed on the computer:
  - Microsoft Internet Explorer, version 4.0 or later
  - Netscape Navigator\*, version 4.51 or later
- The IP address of the switch or switch stack

For instructions to set the IP address of the switch, refer to [“Setting the switch IP parameters” on page 22](#).

Access to the Web management interface must also be enabled for the switch (the default setting) using the console interface. For information about enabling Web access, refer to *Using the BayStack 420/425 Switch, Software Release 3.1*.

## Accessing the Web interface

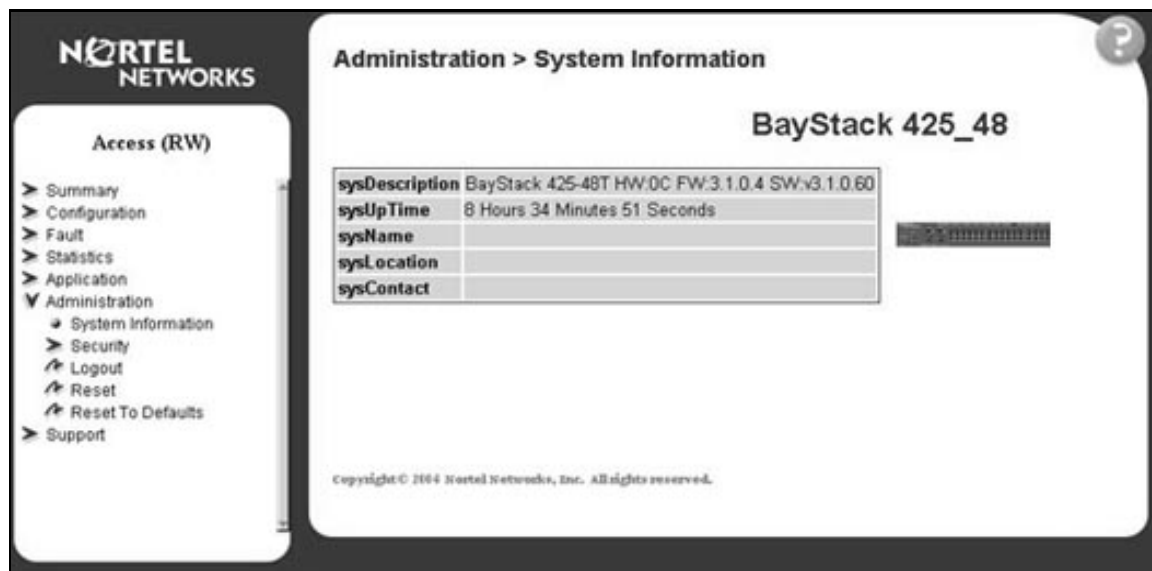
Before you log in to the Web management interface, use the console interface to verify the VLAN port assignments. Also use the console interface to make sure that the switch CPU and your computer are assigned to the same VLAN. If the devices are not connected to the same VLAN, the IP address of the switch will not open the home page.

To access the Web interface:

- 1 Start your Web browser.
- 2 In the Web address field of your Web browser, type the switch IP address, and press [Enter].

If this is the first time you are logging in to the Web management interface, the System Information home page opens ([Figure 35](#)).

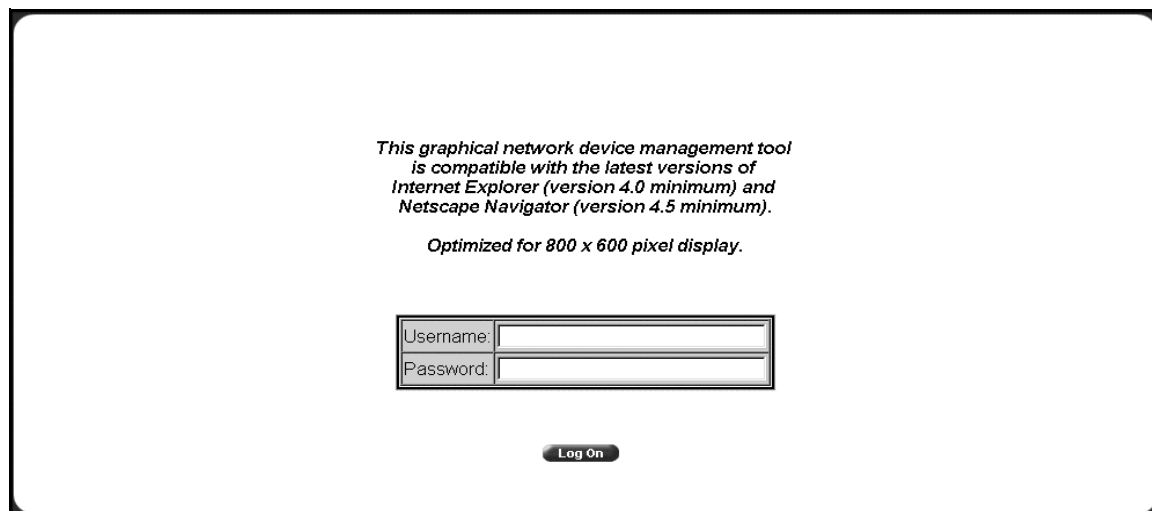
Figure 35 System Information home page



Network security does not yet exist the first time you access the Web management interface. As the system administrator, you must create access parameters and passwords. For more information about setting access parameters and system passwords, refer to [“Setting up security” on page 74](#).

- 3 If passwords have already been set, the login page opens (Figure 36).

Figure 36 Login page



- 4 In the Username text box, type **ro** for read-only access or **rw** for read-write access.
- 5 In the Password text box, type your password.
- 6 Click Log On.

The System Information home page opens.

With Web access enabled, the switch can support up to four concurrent Web page users. Two pre-defined user levels are available, and each user level has a corresponding user name and password.

[Table 13](#) shows the two pre-defined user levels available and their corresponding access levels in the Web management interface.

**Table 13** User levels in the Web management interface

User level	User name	Password	Access level
Read-only	ro	XXXXXXXX	Read-only
Read/write	rw	XXXXXXXX	Full read/write access

Information is available online about the Web management interface. To access more information about the Web management interface:

➔ Do one of the following:

- Click Support > Help to view the entire Help file.
- For context-sensitive Help, click the Help button on any page to view information specifically about that page.

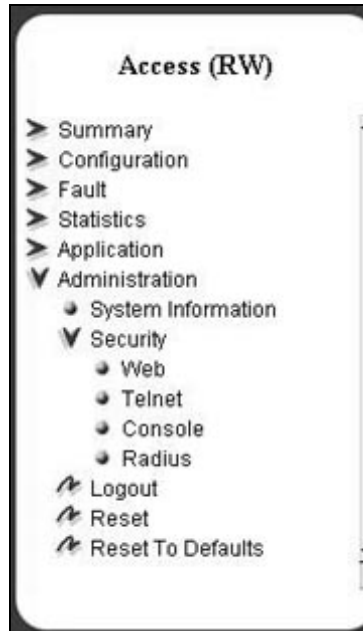
## Web page layout

All the Web management pages for the BayStack 420/425 Switch have a common layout. Each is divided into two sections: the menu and the content area. All Web pages are optimized for an 800 x 600 pixel screen size.

## Menu

The menu (Figure 37) is the same for all pages. It contains a list of seven main headings.

**Figure 37** Menu



The first six headings provide options for viewing and configuring switch parameters. The Support heading provides options to open the online Help file and the Nortel Networks Web site. Table 14 lists the main menu headings and their associated options. For detailed information about managing the switch using the Web management interface, refer to *Using Web-Based Management for the BayStack 420/425 Switch, Software Release 3.1*.

**Table 14** Menu headings and options

<b>Heading</b>	<b>Option</b>
Summary	Stack Information Switch Information Switch View Identify Unit Numbers (only for a stack configuration) Stack Numbering (only for a stack configuration)
Configuration	IP System SNMPv1 SNMPv3 SNMP Trap MAC Address Table Find MAC Address Port Management High Speed Flow Control Software Download Configuration File Console/Comm Port
Fault	RMON Threshold RMON Event Log System Log
Statistic	Port Interface Ethernet Errors Transparent Bridging RMON Ethernet RMON History
Application	Port Mirroring VLAN Spanning Tree MultiLink Trunk MAC AddressSecurity
Administration	System Information Security Logout Reset Reset to Defaults
Support	Help Release Notes Manuals Upgrade









## Content area

The content area displays tables of information with buttons that you use to configure and monitor the switch. Some tables may be too big to fit the displayed page area. In these cases, use the scroll bars at the side and bottom to view the entire table.

## Icons

Some pages contain icons that allow you to modify information in a statistical table or to display statistics in chart format. [Table 15](#) describes the icons.

**Table 15** Page icons

Icon	Name	Description
	Modify	Modifies the row.
	Help	Opens online Help.
	Delete	Deletes a row.
	Pie chart	Displays the statistics as a pie chart.
	Bar graph	Displays statistics as a bar graph.
	Line graph	Displays statistics as a line graph.

## Setting up security

To set passwords and RADIUS (Remote Authentication Dial In User Service) authentication settings for the for the switch or stack, use the Security pages. These pages allow you to create or modify the passwords of a standalone switch or any switches within the stack framework, and allow you to set the security parameters for remote dial access users.



**Note:** Nortel Networks recommends that when you install the switch, you set the initial system passwords using the console interface. After that, you can update them using the Web management interface. For information about using the console interface, refer to *Using the BayStack 420/425 Switch, Software Release 3.1*.

---

To set console, Web, and Telnet passwords and RADIUS authentication settings:

➔ From the main menu, choose Administration > Security.

Four options are displayed:

- Web  
Allows you to define Web password settings in switch or stack mode.
- Telnet  
Allows you to define Telnet password settings in switch or stack mode.
- Console  
Allows you to define console password settings in switch (stand alone) or stack mode.
- Radius  
Allows you to set the server parameters that will provide authentication, authorization, and accounting for RADIUS.

### Setting console, Telnet, and Web passwords

- 1 From the main menu, select Administration > Security.
- 2 On the Security page list, click Console, Telnet, or Web.

The selected password management page opens (Figure 38).



**Note:** The title of the page indicates which type of access you are setting the password for. In Figure 38, the network administrator selected Administration > Security > Console.

**Figure 38** Console password page

- 3 Choose the type of password:
  - None—specifies no password for this type of access
  - Local Password—sets a password for access through direct network connection or a direct Console port connection
  - RADIUS Authentication—sets a password for remote dial-in. If you select this password type, you must also set up RADIUS authentication from the Radius management page.
- 4 Type the password for read-only and read/write user access.
- 5 Click Submit to save the changes.

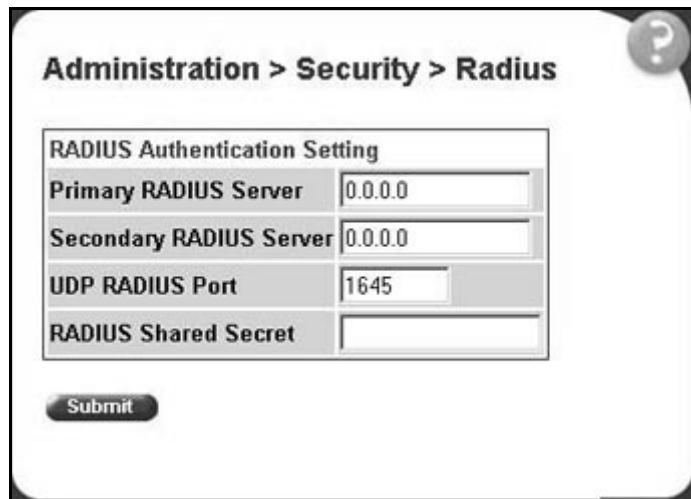
## Setting remote dial-in access security

To set the parameters for remote dial-in access security:

- 1 From the main menu, select Administration > Security > Radius.

The Radius management page opens (Figure 39).

**Figure 39** Radius management page



The screenshot shows a web management interface for Radius configuration. The breadcrumb navigation is "Administration > Security > Radius". A help icon (question mark) is in the top right corner. The main content area is titled "RADIUS Authentication Setting" and contains a table with the following fields:

RADIUS Authentication Setting	
Primary RADIUS Server	<input type="text" value="0.0.0.0"/>
Secondary RADIUS Server	<input type="text" value="0.0.0.0"/>
UDP RADIUS Port	<input type="text" value="1645"/>
RADIUS Shared Secret	<input type="text"/>

Below the table is a "Submit" button.

- 2 Type the IP addresses of the primary and secondary RADIUS (Remote Authentication Dial In User Services) servers.
- 3 Type the number of the user datagram protocol (UDP) port for the RADIUS server. The default value is 1645.
- 4 Type a character string for the RADIUS Shared Secret. This parameter is a special switch security code that provides authentication to the RADIUS server. The value can be any contiguous ASCII string that contains at least one printable character, up to a maximum of 35.
- 5 Click Submit.

## EAPOL-based security

BayStack 420/425 Switch provides support for security based on the Extensible Authentication Protocol over LAN (EAPOL), which uses the EAP as described in the IEEE Draft P802.1X to allow you to set up network access control on internal LANs.

EAP allows the exchange of authentication information between any end station or server connected to the switch and an authentication server (such as a RADIUS server). The EAPOL-based security feature operates in conjunction with a RADIUS-based server to extend the benefits of remote authentication to internal LAN clients.

## **ASCII configuration upload and download**

This feature uploads or downloads an ASCII configuration file from a TFTP server, parses the commands in the file, and configures the switch based on the commands in the file.

You can edit the configuration file on any host computer using a regular text editor. This provides quick configuration of the switch, using an easy-to-modify text configuration file.

You use the Nortel Networks Command Line Interface (NNCLI) to make changes to the ASCII configuration file.



---

# Index

---

## A

AbsoluteValue statistics 58  
access levels 25, 45, 70  
Actions menu 49  
Alarm Manager button 50  
Area Chart button 64  
authentication 76  
Average statistics 58

## B

Bar Chart button 64  
bar graph example 60  
blinking LEDs 54  
buttons  
    dialog boxes 56  
    toolbar 49

## C

color-coded ports 54  
communication parameters, setting for Device  
    Manager 42  
community strings  
    default 45  
    entering 47  
Confirm row deletion field 44  
console passwords 74  
content area, Web page 73  
conventions, text 18  
Copy button 56

Cumulative statistics 58  
customer support 19

## D

data, exporting 62  
default access community strings 45  
Device Manager  
    installing on UNIX 34  
    installing on Windows 27  
    requirements 21  
    setting properties 42  
    starting 41  
    summary 21  
Device Manager window 41  
Device menu 49  
Device Name field 47  
device view  
    displaying 45  
    summary 50  
device, opening 45  
Disable command 56  
disabled port, color 54

## E

EAPOL-based network security 76  
Edit command 55, 56  
Edit menu 49  
Edit Selected button 50  
Enable command 56  
Enable field 44

Export Data button 57, 62

## G

graph

- creating 62
- modifying 64

Graph command 56

graph dialog box 63

Graph menu 49

Graph Selected button 50, 62

graph types 58

## H

Help button 49

Help menu 49

Help, Device Manager 66

Horizontal button 64

## I

Insert button 56

installation, Device Manager 27

IP parameters, setting 22

## L

LastValue statistics 58

layout, Web page 70

LEDs in device view 54

legend, port color 49, 54

Line Chart button 64

line graph example 59

link, lacking, color 54

Log Scale button 64

login window 69

## M

Main Menu, console 23

Max Traps in Log field 44

Maximum statistics 58

MDA, viewing 52

media dependent adapter. *See* MDA

menu bar, Device Manager 48

menu, Web 71

menus. *See* individual menu names

Microsoft Internet Explore, software version 67

Minimum statistics 58

multiple objects, selecting 52

## N

Netscape Navigator, software version 67

network security

- at first login 69

- setting up 74

new table entry, creating 56

## O

object types 50

objects

- editing 57

- selecting 50

online Help 49, 66

Open Device button 45, 49

Open Device dialog box 45

operating port, color 54

## P

password management pages 75

passwords 25, 70, 74

Paste button 56

patches, Solaris 35

pie graph example 60



polling interval 62  
port color legend 54  
port shortcut menu 55  
ports  
  color-coded 54  
  disabled 54  
  selecting 52  
Print button 56  
product support 19  
Properties dialog box 42  
  Hotswap Poll Interval field 44  
  If Traps, Status Interval  
  ) field 43  
  Status Poll Interval field 43  
publications  
  hard copy 19  
  related 18

## R

Radius authentication 74  
Radius management page 76  
Read Community field 47  
Read Community, SNMP 47  
Read Community, SNMP field 47  
read-only access 75  
read-write access 75  
Read-Write-All access 47  
Refresh Device Status button 49  
release notes, obtaining 71  
remote dial-in access 75  
requirements  
  Device Manager 21  
  UNIX installation of Device Manager 34  
  Web management interface 22, 67  
  Windows installation of Device Manager 27  
Reset Changes button 56  
Retry Count field 44  
Rmon menu 49

## S

security  
  EAPOL-based network security 76  
shortcut menus  
  port 55  
  switch unit 55  
single object, selecting 51  
SNMP traps 65  
software installation  
  UNIX 34  
  Windows 27  
Solaris patches, installing 35  
Stacked button 64  
standalone switch, setting IP parameters 24  
statistics  
  for a single object 61  
  for multiple objects 62  
  graphing 58  
  types 58  
statistics dialog box  
  multiple objects 62  
  single object 61  
statistics dialog boxes 49  
Stop button 57  
Support heading 71  
support Web site 27  
support, Nortel Networks 19  
switch stack, selecting 52  
switch stack, setting IP parameters 24  
switch unit shortcut menu 55  
switch, selecting 51  
System Information home page 68

## T

technical publications 19  
technical support 19  
Telnet button 50, 65

Telnet passwords 74  
Telnet session 50, 65  
text conventions 18  
Timeout field 44  
toolbar, Device Manager 49  
Trace field 44  
trap log 65  
Trap Log button 49  
Trap Port field 44  
troubleshooting  
    locations of Help files 66  
    opening the Web home page 68  
    receiving traps 65  
types of objects 50

## U

UNIX  
    installing Device Manager 34  
    receiving traps 65  
unmanageable port, color 54  
user levels 70

## V

value, changed 57  
versions, Web browsers 67  
VLAN menu 49

## W

Web Help file, accessing 71  
Web management interface  
    description 22  
    opening 68  
    requirements 22  
Web management interface requirements 67  
Web management options 71  
Web passwords 74  
Web site, Services and Support 27