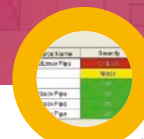
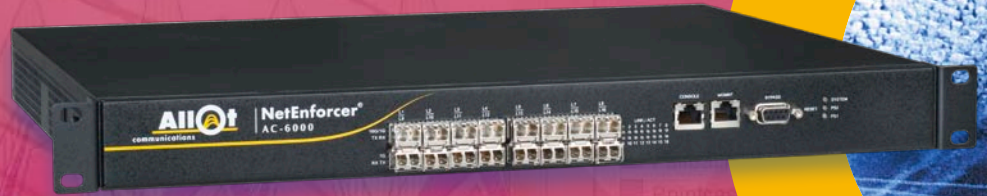


# NetEnforcer® AC-6000 Series

## 16 Gbps Bandwidth Management Device

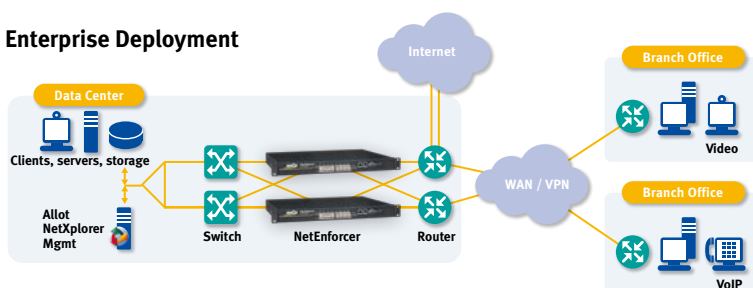


**Allot NetEnforcer AC-6000 manages broadband Internet traffic on multiple Ethernet links at speeds of up to 16 Gbps. Bringing 10GE connectivity to the NetEnforcer series, and providing real-time monitoring, QoS policy enforcement and traffic steering, this flexible, cost-effective device helps enterprises, organizations, and cloud service providers control bandwidth utilization and costs while ensuring quality of experience (QoE) for all network users.**

## Main Features

- Throughput of 2, 4 and 8 Gbps (full duplex) with real-time monitoring and QoS management of up to 5 million concurrent IP flows
- High port density per unit:
  - 8 x 1GE plus 8 x 10GE/1GE (dual mode)
  - All ports can be used for network connectivity, connectivity to external services (steering), cascading, and high availability
- IPv4/IPv6 dual stack subscriber support for flexible network configuration
- Powered by Allot's Dynamic Actionable Recognition Technology (DART) engine, which provides granular visibility of subscriber, application, device (including tethering), and network topology traffic
- DART's extensive signature library accurately identifies hundreds of Internet applications and protocols, including P2P, VoIP, streaming, gaming, IM, business applications and cloud services
- Automated, web-based update keeps the signature library up to date with the latest developments
- Supports user-defined signatures based on HTTP attributes, as well as monitoring reports based on custom HTTP signatures
- Real-time traffic monitoring and automatic alarms enable fast and accurate troubleshooting with the ability to trigger corrective actions
- Works together with Allot Subscriber Management Platform (SMP) to provide real-time usage data for online and offline charging and subscriber policy management
- Policy-based traffic steering to external network and subscriber services
- Integrated URL filtering service blocks access to blacklisted and illegal websites at the network level (See Allot WebSafe)
- Integrated threat protection system prevents DNS blacklisting, isolates infected botnet hosts for clean-up, and surgically mitigates DDoS attacks (see Allot ServiceProtector)
- Managed by Allot NetXplorer centralized management system
- Fail-safe performance supported by external hardware bypass

## Enterprise Deployment



# Specifications

The NetEnforcer AC-6000 is currently available in a single versatile model, serving a range of network configurations and needs.

		AC-6000
Capacity	Throughput	16 Gbps (8 Gbps, full duplex)
	Number of Connections/Flows	5,000,000 / 10,000,000
	Number of Subscribers	400,000
	Policy Levels (Lines/Pipes/Virtual Channels)	512 / 125,000 / 250,000
Interfaces and Connections	Management Interface	10/100/1000BASE-T
	Ethernet Interfaces (Internal / External)	10GE-BASE-SR/LR/ER, 1000BASE-SX/LX/ZX, and 10/100/1000BASE-T
	Maximum ports for network connectivity, cascading, or steering	8 x 1GE + 8 x 10GE/1GE
	Console Port	Serial, RJ-45 Connector
Examples of Application/Protocol Signatures Supported	P2P	Including BitTorrent, eDonkey, Ares, Gnutella, Thunder, Winny, eMule, Vuze
	VoIP and IM	Including Windows Live Messenger, SIP, Skype, Yahoo Messenger, GoogleTalk, Fring, WhatsApp, STUN, ICQ, Viber, and QQ
	Gaming	Including World of Warcraft, Final Fantasy, Guitar Hero, Second Life, QQ Games, Lineage, CounterStrike, Call of Duty, Apple Game Center
	Web	Including HTTP, mobile, and social networking applications
	Streaming	Including YouTube, RTMP, QQ live, PPStream, DailyMotion, HTTP streaming, HTTP audio, NetFlix, and Facebook streaming
	File Transfer	Including FTP, HTTP file downloads, Apple App Store, and Android Market
Networking Standards	Traffic Encapsulation	Including L2TP, MPLS, PPPoE, and Teredo
	IPv6	IPv6 subscriber management available with Allot SMP
Product Options	QoS Enforcement Levels	2, 4 and 8 Gbps (full duplex)
	Monitoring and Reporting	Real-time and long-term
	High Availability	Active redundancy (1:1, 1+1), bypass
	Asymmetric Traffic Handling	Yes
Management	NetXplorer Centralized Management	Yes
	Allot Subscriber Management Platform (SMP)	Fully integrated with Allot SMP for subscriber-application control
Full Integration with Network & Subscriber Services	Allot TierManager and QuotaManager	For subscriber service tiering and quota management solutions
	Allot ServiceProtector	For DDoS/outbound spam detection and mitigation solutions
	Allot WebSafe	For URL filtering solutions
	Allot MediaSwift E	For media caching and video acceleration solutions
	Traffic Steering	For deployment of external services
Dimensions	Size / Weight	Standard 1U by 19" rack mount / 7 kg (15.4 lb)
	Dimensions / Operating Temp	350mm x 440mm x 44mm (L x W x H) / 0°C to 45°C
	Bypass Unit	External, 1U, 19" rack mount, 2.4 kg (5.3 lb)
Power	Input (AC)	100 - 240 VAC, 50/60Hz, 4A max
	Input (DC)	-48 VDC, 7.5A max
	Power Supply Units	2 (Load Sharing)
	Redundancy for PSUs	1 + 1
	Power Consumption / Heat Dissipation	300W / 1,025 BTU/hour
Safety and Certifications	Safety	UL 60950-1:2007; EN 60950-1:2006 + A11:2009; CAN/CSA-C22.2 No. 60950-1-07
	EMC	European Directives 2004/108/EC & IVD 73/23/EEC, including EN 55022: 2006 + A1:2007, EN 55024: 1998 + A1:2001 + A2: 2003, EN61000-3-2: 2006 + A1: 2009, EN61000-3-3: 2008, EN 300 386 V1.4.1: 2008-04, FCC CFR 47 Part 15B Industry Canada ICES-003 Issue 4; C108.8-M1983 VCCI Technical Requirements V-3/2001.04 Australia ACMA, AS/NZS CISPR22:2006 Complies with directive 2002/95/EC (RoHS) and directive 2002/96/EC (WEEE)

## About Allot Communications

Allot Communications Ltd. (NASDAQ, TASE: ALLT) is a leading global provider of intelligent solutions to optimize and monetize over-the-top Internet traffic in fixed and mobile broadband networks and large enterprises. Allot Service Gateway offers service providers a broad range of value-added services in a single platform, which include the analytics, policy control, video optimization, video caching and charging that are vital to managing fixed and mobile data, enhancing user experience, containing operating costs, and enabling service providers to generate revenues from their broadband networks. Allot's rich portfolio of solutions leverages dynamic actionable recognition technology (DART) to transform broadband pipes into smart networks that can rapidly and efficiently deploy value added Internet services. For more information, please visit <http://www.allot.com>.

[www.allot.com](http://www.allot.com) [info@allot.com](mailto:info@allot.com)

- **Americas:** 300 TradeCenter, Suite 4680, Woburn, MA 01801 USA · Tel: (781) 939-9300 · Toll free: 877-255-6826 · Fax: (781) 939-9393
- **Europe:** NCI – Les Centres d’Affaires Village d’Entreprises ‘Green Side’, 400 Avenue Roumanille, BP309, 06906 Sophia Antipolis Cedex, France · Tel: 33 (0) 4-93-001160 · Fax: 33 (0) 4-93-001165
- **Asia Pacific:** 6 New Industrial Road, #08-01, Hoe Huat Industrial Building, Singapore 536199 · Tel: +65-6283 8990 · Fax: +65-6282 7280
- **Japan:** 4-2-3-301 Kanda Surugadai, Chiyoda-ku, Tokyo 101-0062 · Tel: 81 (3) 5297-7668 · Fax: 81(3) 5297-7669
- **Middle East and Africa:** 22 Hanagar Street, Industrial Zone B, Hod-Hasharon, 45240, Israel · Tel: 972 (9) 761-9200 · Fax: 972 (9) 744-3626

