



```
void... (struct group_info *group_info)
{
    int i;
    if (group_info->nblocks[0] != group_info->nsmallblocks)
        unsigned int count = group_info->nblocks;
    for (i = 0; i < group_info->nblocks; i++) {
        unsigned int cpcount = min(NGROUPSPERBLOCK,
        unsigned int count * sizeof(*group_info->nblocks));
        if (copyto_user(group_info->nblocks[i], count,
        return -EFAULT;
        grouplist += NGROUPSPERBLOCK;
        unsigned int cpcount;
        unsigned int len = cpcount * sizeof(*group_info->nblocks);
        gidsetsize + NGROUPSPERBLOCK - 1) / NGROUPS_PER_BLOCK;
        nblocks = gidsetsize + nblocks;
        nsmallblocks = gidsetsize + nsmallblocks;
        if (gidsetsize < NGROUPSSMALL)
            group_info->nblocks[0] = group_info->nsmallblocks;
            for (i = 0; i < nblocks; i++) {
                gid_t *b;
                if (!b)
                    goto out_undo_partial_alloc;
                group_info->nblocks[i] = b;
            }
        return group_info;
    }
    partial_alloc;
    while (--i > 0) {

```

# SNR SERVER CATALOGUE

LINE OF SERVERS SNR SCALABLE GEN 3.....	4
SNR-SR1304RS .....	4
SNR-SR1310RS .....	5
SNR-SR2308RS .....	6
SNR-SR2312RS .....	7
SNR-SR2325RS .....	8
SNR-SR4324RS .....	9
SNR-SR4336RS .....	10
LINE OF SERVERS SNR AMD EPYC 7002 / 7003.....	11
SNR-SR1204RE .....	11
SNR-SR1210RE .....	12
SNR-SR2208RE .....	13
SNR-SR2212RE .....	14
SNR-SR2225RE .....	15
SNR-SR4224RE .....	16
SNR-SR4236RE .....	17
LINE OF SERVERS SNR SCALABLE GEN 2.....	18
SNR-SR1204RS .....	18
SNR-SR1210RS .....	19
SNR-SR2208RS .....	20
SNR-SR2212RS .....	21
SNR-SR2225RS .....	22
SNR-SR4224RS .....	23
SNR-SR4236RS .....	24
LINE OF SERVERS SNR GPU.....	25
SNR-SR4210GPU .....	25
ACCESSORIES FOR SERVERS SNR.....	26





### SNR-SR1304RS

- Modular design
- Intel Xeon Scalable Gen 3 Processor
- Up to 12TB DDR4 ECC RDIMM
- Up to 4 pcs 2.5"/3.5" SATA/SAS Hot Swappable
- 550W Power Supply - 2pcs



### SNR-SR1310RS

- Modular design
- Intel Xeon Scalable Gen 3 Processor
- Up to 12TB DDR4 ECC RDIMM
- Up to 10 pcs 2.5" SATA Hot Swappable
- 550W power supply units - 2 pcs

## MAIN FEATURES

Specifications			
Motherboard chipset	Intel C621A	Carriers for hard drives	Yes
Number of sockets for the processor	2	Number of PCI-E expansion slots	1 (Up to 2)
Processor family	Intel Xeon Scalable Gen 3	Rails for 19" rack	Yes
Type of RAM	DDR4	Socket	LGA 4189
Maximum amount of RAM, TB	12	ECC memory support	Yes
Number of RAM slots	32	Type of installed radiators	Standard efficiency radiator
The form factor of hard drive bays	LFF 3,5" / SFF 2,5"	Device type	Server platform
Number of hard drive bays	4		
Management and monitoring			
Control port	10/100/1000BaseT		
Interfaces			
10/100/1000BaseT interfaces	2		
Power			
Supply voltage	220V AC		
Power supply units (PSU)	2		
Power per PSU, W	550		
Physical characteristics			
Operating temperature range, °C	from 10 to 35		
Chassis dimension	1U		

## MAIN FEATURES

Specifications			
Motherboard chipset	Intel C621A	Carriers for hard drives	Yes
Number of sockets for the processor	2	Number of PCI-E expansion slots	1 (Up to 2)
Processor family	Intel Xeon Scalable Gen 3	Rails for 19" rack	Yes
Type of RAM	DDR4	Socket	LGA 4189
Maximum amount of RAM, TB	12	ECC memory support	Yes
Number of RAM slots	32	Type of installed radiators	Standard efficiency radiator
The form factor of hard drive bays	SFF 2,5"	Device type	Server platform
Number of hard drive bays	10		
Management and monitoring			
Control port	10/100/1000BaseT		
Интерфейсы			
10/100/1000BaseT interfaces	2		
Power supply			
Supply voltage	220V AC		
Power supply units (PSU)	2		
Power per PSU, W	550		
Physical characteristics			
Operating temperature range, °C	from 10 to 35		
Chassis dimension	1U		

## ORDERING INFORMATION

SNR-SR1304RS	1U SNR-SR1304RS server platform, supporting up to two Intel Xeon Scalable Gen3 processors, DDR4, 4x2.5"/3.5" HDD, 2x1000Base-T, two 550W redundant power supply units
--------------	---



## ORDERING INFORMATION

SNR-SR1310RS	1U SNR-SR1310RS server platform, supporting up to two Intel Xeon Scalable Gen3 processors, DDR4, 10x2.5" SATA HDD, 2x1000Base-T, two 550W redundant power supplies
--------------	--





### SNR-SR2308RS

- Modular construction
- Intel Xeon Scalable Gen 3 Processor
- Up to 12TB DDR4 ECC RDIMM
- Up to 8 pcs 2.5"/3.5" SATA Hot Swappable
- 800W Power Supply - 2pcs



### SNR-SR2312RS

- Modular construction
- Intel Xeon Scalable Gen 3 Processor
- Up to 12TB DDR4 ECC RDIMM
- Up to 12 pcs 2.5"/3.5" SATA/SAS Hot Swappable
- 800W power supply - 2 pcs

## MAIN FEATURES

Specifications			
Motherboard chipset	Intel C621A	Carriers for hard drives	Yes
Number of sockets for the processor	2	Number of PCI-E expansion slots	3 (Up to 10)
Processor family	Intel Xeon Scalable Gen 3	Rails for 19" rack	Yes
Type of RAM	DDR4	Socket	LGA 4189
Maximum amount of RAM, TB	12	ECC memory support	Yes
Number of RAM slots	32	Type of installed radiators	Standard efficiency radiator
The form factor of hard drive bays	LFF 3,5" / SFF 2,5"	Device type	Server platform
Number of hard drive bays	8		
Management and monitoring			
Control port	10/100/1000BaseT		
Interfaces			
10/100/1000BaseT interfaces	2		
Power supply			
Supply voltage	220V AC		
Power supply units (PSU)	2		
Power per PSU, W	800		
Physical characteristics			
Operating temperature range, °C	from 10 to 35		
Chassis dimension	2U		

## MAIN FEATURES

Specifications			
Motherboard chipset	Intel C621A	Carriers for hard drives	Yes
Number of sockets for the processor	2	Number of PCI-E expansion slots	3 (up to 10)
Processor family	Intel Xeon Scalable Gen 3	Rails for 19" rack	Yes
Type of RAM	DDR4	Socket	LGA 4189
Maximum amount of RAM, TB	12	ECC memory support	Yes
Number of RAM slots	32	Type of installed radiators	Standard efficiency radiator
The form factor of hard drive bays	LFF 3,5" / SFF 2,5"	Device type	Server platform
Number of hard drive bays	12		
Management and monitoring			
Control port	10/100/1000BaseT		
Interfaces			
10/100/1000BaseT interfaces	2		
Power supply			
Supply voltage	220V AC		
Power supply units (PSU)	2		
Power per PSU, W	800		
Physical characteristics			
Operating temperature range, °C	from 10 to 35		
Chassis dimension	2U		

## ORDERING INFORMATION

SNR-SR2308RS	2U SNR-SR2308RS server platform, supporting up to two Intel Xeon Scalable Gen3 processors, DDR4, 8x2.5"/3.5" SATA HDD, 2x1000Base-T, two 800W redundant power supplies
--------------	--



## ORDERING INFORMATION

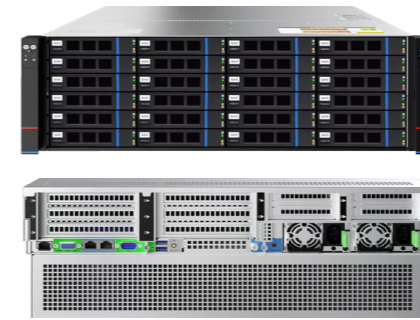
SNR-SR2312RS	2U SNR-SR2312RS server platform, supporting up to two Intel Xeon Scalable Gen 3 processors, DDR4, 12x2.5"/3.5" SATA HDD, 2x1000Base-T, two 800W redundant power supplies
--------------	--





### SNR-SR2325RS

- Modular construction
- Intel Xeon Scalable Gen 3 Processor
- Up to 12TB DDR4 ECC RDIMM
- Up to 25 pcs 2.5" SATA/SAS Hot-swappable
- 800W power supply - 2 pcs



### SNR-SR4324RS

- Modular construction
- Intel Xeon Scalable Gen 3 Processor
- Up to 12TB DDR4 ECC RDIMM
- Up to 24 pcs 2.5"/3.5" SATA/SAS Hot Swappable
- 1200W Power Supply - 2pcs

#### MAIN FEATURES

Specifications			
Motherboard chipset	Intel C621A	Carriers for hard drives	Yes
Number of sockets for the processor	2	Number of PCI-E expansion slots	3 (Up to 10)
Processor family	Intel Xeon Scalable Gen 3	Rails for 19" rack	Yes
Type of RAM	DDR4	Socket	LGA 4189
Maximum amount of RAM, TB	12	ECC memory support	Yes
Number of RAM slots	32	Type of installed radiators	Standard efficiency radiator
The form factor of hard drive bays	SFF 2,5"	Device type	Server platform
Number of hard drive bays	25		
Management and monitoring			
Control port	10/100/1000BaseT		
Interfaces			
10/100/1000BaseT interfaces	2		
Power supply			
Supply voltage	220V AC		
Power supply units (PSU)	2		
Power per PSU, W	800		
Physical characteristics			
Operating temperature range, °C	From 10 Up to 35		
Chassis dimension	2U		

#### MAIN FEATURES

Specifications			
Motherboard chipset	Intel C621A	Carriers for hard drives	Yes
Number of sockets for the processor	2	Number of PCI-E expansion slots	3 (Up to 10)
Processor family	Intel Xeon Scalable Gen 3	Rails for 19" rack	Yes
Type of RAM	DDR4	Socket	LGA 4189
Maximum amount of RAM, TB	12	ECC memory support	Yes
Number of RAM slots	32	Type of installed radiators	Standard efficiency radiator
The form factor of hard drive bays	LFF 3,5" / SFF 2,5"	Device type	Server platform
Number of hard drive bays	24		
Management and monitoring			
Control port	10/100/1000BaseT		
Interfaces			
10/100/1000BaseT interfaces	2		
Power supply			
Supply voltage	220V AC		
Power supply units (PSU)	2		
Power per PSU, W	1200		
Physical characteristics			
Operating temperature range, °C	From 10 Up to 35		
Chassis dimension	4U		

#### ORDERING INFORMATION

SNR-SR2325RS	2U SNR-SR2325RS server platform, supporting up to two Intel Xeon Scalable Gen3 processors, DDR4, 25x2.5" SATA HDD, 2x1000Base-T, two 800W redundant power supplies
--------------	--



#### ORDERING INFORMATION

SNR-SR4324RS	4U SNR-SR4324RS server platform, supporting up to two Intel Xeon Scalable Gen3 processors, DDR4, 24x2.5"/3.5" SATA HDD, 2x1000Base-T, two 1200W redundant power supplies
--------------	--





### SNR-SR4336RS

- Modular construction
- Intel Xeon Scalable Gen 3 Processor
- Up to 12TB DDR4 ECC RDIMM
- Up to 36 pcs 2.5"/3.5" SATA/SAS Hot Swappable
- 1200W Power Supply - 2pcs



### SNR-SR1204RE

- Modular construction
- AMD APU 7002 / 7003 Processor
- Up to 4TB DDR4 ECC RDIMM
- Up to 4 pcs 2.5"/3.5" SATA Hot Swappable
- 550W power supply - 2 pcs

## MAIN FEATURES

Specifications			
Motherboard chipset	Intel C621A	Carriers for hard drives	Yes
Number of sockets for the processor	2	Number of PCI-E expansion slots	3 (Up to 10)
Processor family	Intel Xeon Scalable Gen 3	Rails for 19" rack	Yes
Type of RAM	DDR4	Socket	LGA 4189
Maximum amount of RAM, TB	12	ECC memory support	Yes
Number of RAM slots	32	Type of installed radiators	Standard efficiency radiator
The form factor of hard drive bays	LFF 3,5" / SFF 2,5"	Device type	Server platform
Number of hard drive bays	36		
Management and monitoring			
Control port	10/100/1000BaseT		
Interfaces			
10/100/1000BaseT interfaces	2		
Power supply			
Supply voltage	220V AC		
Power supply units (PSU)	2		
Power per PSU, W	1200		
Physical characteristics			
Operating temperature range, °C	From 10 Up to 35		
Chassis dimension	4U		

## MAIN FEATURES

Specifications			
Motherboard chipset	System on Chip	Carriers for hard drives	Yes
Number of sockets for the processor	2	Number of PCI-E expansion slots	1 (Up to 2)
Processor family	AMD EPYC 7002 / 7003	Rails for 19" rack	Yes
Type of RAM	DDR4	Socket	Socket SP3
Maximum amount of RAM, TB	2	ECC memory support	Yes
Number of RAM slots	32	Type of installed radiators	Standard efficiency radiator
The form factor of hard drive bays	LFF 3,5" / SFF 2,5"	Device type	Server platform
Number of hard drive bays	4		
Management and monitoring			
Control port	10/100/1000BaseT		
Interfaces			
10/100/1000BaseT interfaces	2		
Power supply			
Supply voltage	220V AC		
Power supply units (PSU)	2		
Power per PSU, W	550		
Physical characteristics			
Operating temperature range, °C	From 10 Up to 35		
Chassis dimension	1U		

## ORDERING INFORMATION

SNR-SR4336RS	Server platform 4U SNR-SR4336RS, supporting up to two Intel Xeon Scalable Gen3 processors, DDR4, 36 x 2.5"/3.5" SATA HDD, 2x1000Base-T, two 1200W redundant power supplies
--------------	--



## ORDERING INFORMATION

SNR-SR1204RE	1U SNR-SR1204RE server platform, supporting up to two AMD EPYC processors of the 1st, 2nd, 3rd generation, DDR4, 4x2.5"/3.5" HDD, 2x1000Base-T, two 550W redundant power supplies
--------------	---





### SNR-SR1210RE

- Modular construction
- AMD APU 7002 / 7003 Processor
- Up to 4TB DDR4 ECC RDIMM
- Up to 10 pcs 2.5" SATA/SAS Hot-swappable
- 550W power supply - 2 pcs



### SNR-SR2208RE

- Modular construction
- AMD APU 7002 / 7003 Processor
- Up to 4TB DDR4 ECC RDIMM
- Up to 8 pcs 2.5"/3.5" SATA/SAS Hot Swappable
- 800W power supply - 2 pcs

## MAIN FEATURES

Specifications			
Motherboard chipset	System on Chip	Carriers for hard drives	Yes
Number of sockets for the processor	2	Number of PCI-E expansion slots	1 (Up to 2)
Processor family	AMD EPYC 7002 / 7003	Rails for 19" rack	Yes
Type of RAM	DDR4	Socket	Socket SP3
Maximum amount of RAM, TB	2	ECC memory support	Yes
Number of RAM slots	32	Type of installed radiators	Standard efficiency radiator
The form factor of hard drive bays	SFF 2,5"	Device type	Server platform
Number of hard drive bays	10		
Management and monitoring			
Control port	10/100/1000BaseT		
Interfaces			
10/100/1000BaseT interfaces	2		
Power supply			
Supply voltage	220V AC		
Power supply units (PSU)	2		
Power per PSU, W	550		
Physical characteristics			
Operating temperature range, °C	From 10 Up to 35		
Chassis dimension	1U		

## MAIN FEATURES

Specifications			
Motherboard chipset	System on Chip	Carriers for hard drives	Yes
Number of sockets for the processor	2	Number of PCI-E expansion slots	3 (Up to 10)
Processor family	AMD EPYC 7002 / 7003	Rails for 19" rack	Yes
Type of RAM	DDR4	Socket	Socket SP3
Maximum amount of RAM, TB	4	ECC memory support	Yes
Number of RAM slots	32	Type of installed radiators	Standard efficiency radiator
The form factor of hard drive bays	LFF 3,5" / SFF 2,5"	Device type	Server platform
Number of hard drive bays	8		
Management and monitoring			
Control port	10/100/1000BaseT		
Interfaces			
10/100/1000BaseT interfaces	2		
Power supply			
Supply voltage	220V AC		
Power supply units (PSU)	2		
Power per PSU, W	800		
Physical characteristics			
Operating temperature range, °C	From 10 Up to 35		
Chassis dimension	2U		

## ORDERING INFORMATION

SNR-SR1210RE	1U SNR-SR1210RE server platform, supporting up to two AMD EPYC processors of the 1st, 2nd, 3rd generation, DDR4, 10x2.5" HDD, 2x1000Base-T, two 550W redundant power supplies
--------------	---



## ORDERING INFORMATION

SNR-SR2208RE	2U SNR-SR2208RE server platform, supporting up to two AMD EPYC processors of the 1st, 2nd, 3rd generation, DDR4, 8x3.5"/2.5" HDD, 2x1000Base-T, two 800W redundant power supplies
--------------	---





### SNR-SR2212RE

- Modular construction
- AMD APU 7002 / 7003 Processor
- Up to 4TB DDR4 ECC RDIMM
- Up to 12 pcs 2.5"/3.5" SATA/SAS Hot Swappable
- 800W power supply - 2 pcs



### SNR-SR2225RE

- Modular construction
- AMD APU 7002 / 7003 Processor
- Up to 8TB DDR4 ECC RDIMM
- Up to 25 pcs 2.5" SATA/SAS Hot-swappable
- 800W power supply - 2 pcs

## MAIN FEATURES

Specifications			
Motherboard chipset	System on Chip	Carriers for hard drives	Yes
Number of sockets for the processor	2	Number of PCI-E expansion slots	3 (Up to 10)
Processor family	AMD EPYC 7002 / 7003	Rails for 19" rack	Yes
Type of RAM	DDR4	Socket	Socket SP3
Maximum amount of RAM, TB	4	ECC memory support	Yes
Number of RAM slots	32	Type of installed radiators	Standard efficiency radiator
The form factor of hard drive bays	LFF 3,5" / SFF 2,5"	Device type	Server platform
Number of hard drive bays	12		
Management and monitoring			
Control port	10/100/1000BaseT		
Interfaces			
10/100/1000BaseT interfaces	2		
Power supply			
Supply voltage	220V AC		
Power supply units (PSU)	2		
Power per PSU, W	800		
Physical characteristics			
Operating temperature range, °C	from 10 to 35		
Chassis dimension	2U		

## MAIN FEATURES

Specifications			
Motherboard chipset	System on Chip	Carriers for hard drives	Yes
Number of sockets for the processor	2	Number of PCI-E expansion slots	3 (Up to 10)
Processor family	AMD EPYC 7002 / 7003	Rails for 19" rack	Yes
Type of RAM	DDR4	Socket	Socket SP3
Maximum amount of RAM, TB	8	ECC memory support	Yes
Number of RAM slots	32	Type of installed radiators	Standard efficiency radiator
The form factor of hard drive bays	SFF 2,5"	Device type	Server platform
Number of hard drive bays	25		
Management and monitoring			
Control port	10/100/1000BaseT		
Interfaces			
10/100/1000BaseT interfaces	2		
Power supply			
Supply voltage	220V AC		
Power supply units (PSU)	2		
Power per PSU, W	800		
Physical characteristics			
Operating temperature range, °C	From 10 Up to 35		
Chassis dimension	2U		

## ORDERING INFORMATION

SNR-SR2212RE	2U SNR-SR2212RE server platform, supporting up to two AMD EPYC processors of the 1st, 2nd, 3rd generation, DDR4, 12x3.5"/2.5" HDD, 2x1000Base-T, two 800W redundant power supplies
--------------	--

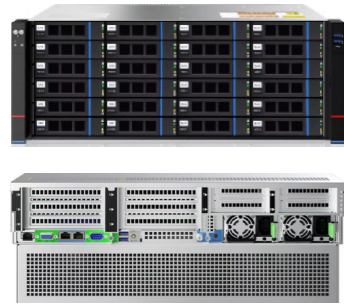


## ORDERING INFORMATION

SNR-SR2225RE	2U SNR-SR2225RE server platform, supporting up to two AMD EPYC processors of the 1st, 2nd, 3rd generation, DDR4, 25x2.5" HDD, 2x1000Base-T, two 800W redundant power supplies
--------------	---







## SNR-SR4224RE

- Modular construction
- AMD APU 7002 / 7003 Processor
- Up to 8TB DDR4 ECC RDIMM
- Up to 24 pcs 2.5"/3.5" SATA/SAS Hot Swappable
- 1200W power supply - 2 pcs



## SNR-SR4236RE

- Modular construction
- AMD APU 7002 / 7003 Processor
- Up to 8TB DDR4 ECC RDIMM
- Up to 36 pcs 2.5"/3.5" SATA/SAS Hot Swappable
- 1200W power supply - 2 pcs

### MAIN FEATURES

Specifications			
Motherboard chipset	System on Chip	Carriers for hard drives	Yes
Number of sockets for the processor	2	Number of PCI-E expansion slots	3 (Up to 10)
Processor family	AMD EPYC 7002 / 7003	Rails for 19" rack	Yes
Type of RAM	DDR4	Socket	Socket SP3
Maximum amount of RAM, TB	8	ECC memory support	Yes
Number of RAM slots	32	Type of installed radiators	Standard efficiency radiator
The form factor of hard drive bays	LFF 3,5" / SFF 2,5"	Device type	Server platform
Number of hard drive bays	24		
Management and monitoring			
Control port	10/100/1000BaseT		
Interfaces			
10/100/1000BaseT interfaces	2		
Power supply			
Supply voltage	220V AC		
Power supply units (PSU)	2		
Power per PSU, W	1200		
Physical characteristics			
Operating temperature range, °C	From 10 Up to 35		
Chassis dimension	4U		

### MAIN FEATURES

Specifications			
Motherboard chipset	System on Chip	Carriers for hard drives	Yes
Number of sockets for the processor	2	Number of PCI-E expansion slots	3 (Up to 10)
Processor family	AMD EPYC 7002 / 7003	Rails for 19" rack	Yes
Type of RAM	DDR4	Socket	Socket SP3
Maximum amount of RAM, TB	8	ECC memory support	Yes
Number of RAM slots	32	Type of installed radiators	Standard efficiency radiator
The form factor of hard drive bays	LFF 3,5" / SFF 2,5"	Device type	Server platform
Number of hard drive bays	36		
Management and monitoring			
Control port	10/100/1000BaseT		
Interfaces			
10/100/1000BaseT interfaces	2		
Power supply			
Supply voltage	220V AC		
Power supply units (PSU)	2		
Power per PSU, W	1200		
Physical characteristics			
Operating temperature range, °C	From 10 Up to 35		
Chassis dimension	4U		

### ORDERING INFORMATION

SNR-SR4224RE	Server platform 4U SNR-SR4224RE, supporting up to two AMD EPYC processors of the 1st, 2nd, 3rd generation, DDR4, 24x3.5"/2.5" HDD, 2x1000Base-T, two 1200W redundant power supplies.
--------------	--



### ORDERING INFORMATION

SNR-SR4236RE	Server platform 4U SNR-SR4236RE, supporting up to two AMD EPYC processors of the 1st, 2nd, 3rd generation, DDR4, 36x3.5"/2.5" HDD, 2x1000Base-T, two 1200W redundant power supplies.
--------------	--





### SNR-SR1204RS

- Classical architecture
- Intel Xeon Scalable Gen 2 family processors
- Up to 3 TB DDR4 2666 MHz ECC RDIMM
- Up to 4 pcs 2.5"/3.5" SATA Hot Swappable
- 550W power supply - 2 pcs



### SNR-SR1210RS

- Classical architecture
- Intel Xeon Scalable Gen 2 family processors
- Up to 3 TB DDR4 2666 MHz ECC RDIMM
- Up to 10 pcs 2.5" SATA/SAS Hot-swappable
- HBA LSI 2008
- 550W power supply - 2 pcs

#### MAIN FEATURES

Specifications			
Motherboard chipset	Intel C621	Carriers for hard drives	Yes
Number of sockets for the processor	2	Number of PCI-E expansion slots	1 (Up to 2)
Processor family	Intel Xeon Scalable Gen 2	Rails for 19" rack	Yes
Type of RAM	DDR4	Socket	FCLGA3647
Maximum amount of RAM, TB	3	ECC memory support	Yes
Number of RAM slots	24	Type of installed radiators	Standard efficiency radiator
The form factor of hard drive bays	LFF 3,5" / SFF 2,5"	Device type	Server platform
Number of hard drive bays	4		
Management and monitoring			
Control port	10/100/1000BaseT		
Interfaces			
10/100/1000BaseT interfaces	2		
Power supply			
Supply voltage	220V AC		
Power supply units (PSU)	2		
Power per PSU, W	550		
Physical characteristics			
Operating temperature range, °C	From 10 Up to 35		
Chassis dimension	1U		

#### MAIN FEATURES

Specifications			
Motherboard chipset	Intel C621	Carriers for hard drives	Yes
Number of sockets for the processor	2	Number of PCI-E expansion slots	1 (Up to 2)
Processor family	Intel Xeon Scalable Gen 2	Rails for 19" rack	Yes
Type of RAM	DDR4	Socket	FCLGA3647
Maximum amount of RAM, TB	3	ECC memory support	Yes
Number of RAM slots	24	Type of installed radiators	Standard efficiency radiator
The form factor of hard drive bays	SFF 2,5"	Device type	Server platform
Number of hard drive bays	10		
Management and monitoring			
Control port	10/100/1000BaseT		
Interfaces			
10/100/1000BaseT interfaces	2		
Power supply			
Supply voltage	220V AC		
Power supply units (PSU)	2		
Power per PSU, W	550		
Physical characteristics			
Operating temperature range, °C	from 10 to 35		
Chassis dimension	1U		

#### ORDERING INFORMATION

SNR-SR1204RS	1U SNR-SR1204RS server Platform, supporting up to two Intel Xeon Scalable processors, DDR4, 4x2.5"/3.5" HDD, 2x1000Base-T, two 550W redundant power supplies.
--------------	---



#### ORDERING INFORMATION

SNR-SR1210RS	1U SNR-SR1210RS server Platform, supporting up to two Intel Xeon Scalable processors, DDR4, 10x2.5" HDD, 2x1000Base-T, two 550W redundant power supplies.
--------------	---





### SNR-SR2208RS

- Classical architecture
- Intel Xeon Scalable Gen 2 family processors
- Up to 3 TB DDR4 2666 MHz ECC RDIMM
- Up to 4 pcs 2.5"/3.5" SATA Hot Swappable
- 800W power supply - 2 pcs



### SNR-SR2212RS

- Classical architecture
- Intel Xeon Scalable Gen 2 family processors
- Up to 3 TB DDR4 2666 MHz ECC RDIMM
- Up to 12 pcs 2.5"/3.5" SATA/SAS Hot Swappable
- 800W power supply - 2 pcs

## MAIN FEATURES

Specifications			
Motherboard chipset	Intel C621	Carriers for hard drives	Yes
Number of sockets for the processor	2	Number of PCI-E expansion slots	3 (Up to 10)
Processor family	Intel Xeon Scalable Gen 2	Rails for 19" rack	Yes
Type of RAM	DDR4	Socket	FCLGA3647
Maximum amount of RAM, TB	3	ECC memory support	Yes
Number of RAM slots	24	Type of installed radiators	Standard efficiency radiator
The form factor of hard drive bays	LFF 3,5" / SFF 2,5"	Device type	Server platform
Number of hard drive bays	8		
Management and monitoring			
Control port	10/100/1000BaseT		
Interfaces			
10/100/1000BaseT interfaces	2		
Power supply			
Supply voltage	220V AC		
Power supply units (PSU)	2		
Power per PSU, W	800		
Physical characteristics			
Operating temperature range, °C	From 10 Up to 35		
Chassis dimension	2U		

## MAIN FEATURES

Specifications			
Motherboard chipset	Intel C621	Carriers for hard drives	Yes
Number of sockets for the processor	2	Number of PCI-E expansion slots	3 (Up to 10)
Processor family	Intel Xeon Scalable Gen 2	Rails for 19" rack	Yes
Type of RAM	DDR4	Socket	FCLGA3647
Maximum amount of RAM, TB	3	ECC memory support	Yes
Number of RAM slots	24	Type of installed radiators	Standard efficiency radiator
The form factor of hard drive bays	LFF 3,5" / SFF 2,5"	Device type	Server platform
Number of hard drive bays	12		
Management and monitoring			
Control port	10/100/1000BaseT		
Interfaces			
10/100/1000BaseT interfaces	2		
Power supply			
Supply voltage	220V AC		
Power supply units (PSU)	2		
Power per PSU, W	800		
Physical characteristics			
Operating temperature range, °C	From 10 Up to 35		
Chassis dimension	2U		

## ORDERING INFORMATION

SNR-SR2208RS	2U SNR-SR2208RS server Platform, supporting up to two Intel Xeon Scalable processors, DDR4, 8x2.5"/3.5" SATA HDD, 2x1000Base-T, two 550W redundant power supplies.
--------------	--



## ORDERING INFORMATION

SNR-SR2212RS	2U SNR-SR2212RS server Platform, supporting up to two Intel Xeon Scalable processors, DDR4, 12x2.5"/3.5" SATA HDD, 2x1000Base-T, two 550W redundant power supplies.
--------------	---





## SNR-SR2225RS

- Classical architecture
- Intel Xeon Scalable Gen 2 family processors
- Up to 3 TB DDR4 2666 MHz ECC RDIMM
- Up to 25 pcs 2.5" SATA/SAS Hot-swappable
- 800W power supply - 2 pcs



## SNR-SR4224RS

- Classical architecture
- Intel Xeon Scalable Gen 2 family processors
- Up to 3 TB DDR4 2666 MHz ECC RDIMM
- Up to 24 pcs 2.5"/3.5" SATA/SAS Hot Swappable
- 1200W power supply - 2 pcs

### MAIN FEATURES

Specifications			
Motherboard chipset	Intel C621	Carriers for hard drives	Yes
Number of sockets for the processor	2	Number of PCI-E expansion slots	3 (Up to 10)
Processor family	Intel Xeon Scalable Gen 2	Rails for 19" rack	Yes
Type of RAM	DDR4	Socket	FCLGA3647
Maximum amount of RAM, TB	3	ECC memory support	Yes
Number of RAM slots	24	Type of installed radiators	Standard efficiency radiator
The form factor of hard drive bays	SFF 2,5"	Device type	Server platform
Number of hard drive bays	25		
Management and monitoring			
Control port	10/100/1000BaseT		
Interfaces			
10/100/1000BaseT interfaces	2		
Power supply			
Supply voltage	220V AC		
Power supply units (PSU)	2		
Power per PSU, W	800		
Physical characteristics			
Operating temperature range, °C	From 10 Up to 35		
Chassis dimension	2U		

### MAIN FEATURES

Specifications			
Motherboard chipset	Intel C621	Carriers for hard drives	Yes
Number of sockets for the processor	2	Number of PCI-E expansion slots	3 (Up to 10)
Processor family	Intel Xeon Scalable Gen 2	Rails for 19" rack	Yes
Type of RAM	DDR4	Socket	FCLGA3647
Maximum amount of RAM, TB	3	ECC memory support	Yes
Number of RAM slots	24	Type of installed radiators	Standard efficiency radiator
The form factor of hard drive bays	LFF 3,5" / SFF 2,5"	Device type	Server platform
Number of hard drive bays	24		
Management and monitoring			
Control port	10/100/1000BaseT		
Interfaces			
10/100/1000BaseT interfaces	2		
Power supply			
Supply voltage	220V AC		
Power supply units (PSU)	2		
Power per PSU, W	1200		
Physical characteristics			
Operating temperature range, °C	From 10 Up to 35		
Chassis dimension	4U		

### ORDERING INFORMATION

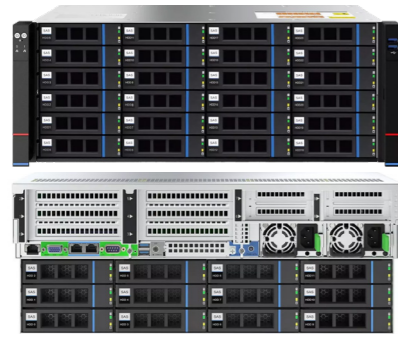
SNR-SR2225RS	2U SNR-SR2225RS server Platform, supporting two Intel Xeon Scalable processors, DDR4, 25x2.5" SATA HDD, 2x1000Base-T, two 550W redundant power supplies.
--------------	--



### ORDERING INFORMATION

SNR-SR4224RS	Server platform 4U SNR-SR4224RS, supporting up to two Intel Xeon Scalable processors, DDR4, 24x2.5"/3.5" HDD SAS/SATA, 2x1000Base-T, two 1200W redundant power supplies.
--------------	--





### SNR-SR4236RS

- Classical architecture
- Intel Xeon Scalable Gen 2 family processors
- Up to 3 TB DDR4 2666 MHz ECC RDIMM
- Up to 36 pcs 2.5"/3.5" SATA/SAS Hot Swappable
- 1200W power supply - 2 pcs



### SNR-SR4210GPU

- Classical architecture
- Intel Xeon Scalable Gen 2 family processors
- Up to 3 TB DDR4 2666 MHz ECC RDIMM
- Up to 4 pcs 2.5"/3.5" SATA/SAS Hot Swappable
- Up to 10 pcs of professional GPU accelerators
- 1200W power supply - 4 pcs

#### MAIN FEATURES

Specifications			
Motherboard chipset	Intel C621	Carriers for hard drives	Yes
Number of sockets for the processor	2	Number of PCI-E expansion slots	3 (Up to 10)
Processor family	Intel Xeon Scalable Gen 2	Rails for 19" rack	Yes
Type of RAM	DDR4	Socket	FCLGA3647
Maximum amount of RAM, TB	3	ECC memory support	Yes
Number of RAM slots	24	Type of installed radiators	Standard efficiency radiator
The form factor of hard drive bays	LFF 3,5" / SFF 2,5"	Device type	Server platform
Number of hard drive bays	36		
Management and monitoring			
Control port	10/100/1000BaseT		
Interfaces			
10/100/1000BaseT interfaces	2		
Power supply			
Supply voltage	220V AC		
Power supply units (PSU)	2		
Power per PSU, W	1200		
Physical characteristics			
Operating temperature range, °C	From 10 Up to 35		
Chassis dimension	4U		

#### MAIN FEATURES

Specifications			
Motherboard chipset	Intel C621	Carriers for hard drives	Yes
Number of sockets for the processor	2	Number of PCI-E expansion slots	10
Processor family	Intel Xeon Scalable Gen 2	Rails for 19" rack	Yes
Type of RAM	DDR4	Socket	FCLGA3647
Maximum amount of RAM, TB	3	ECC memory support	Yes
Number of RAM slots	24	Type of installed radiators	Standard efficiency radiator
The form factor of hard drive bays	LFF 3,5" / SFF 2,5"	Device type	Server platform
Number of hard drive bays	4		
Management and monitoring			
Control port	10/100/1000BaseT		
Interfaces			
10/100/1000BaseT interfaces	4		
Power supply			
Supply voltage	220V AC		
Power supply units (PSU)	4		
Power per PSU, W	1200		
Physical characteristics			
Operating temperature range, °C	From 10 Up to 35		
Chassis dimension	4U		

#### ORDERING INFORMATION

SNR-SR4236RS	Server platform 4U SNR-SR4236RS, supporting up to two Intel Xeon Scalable processors, DDR4, 36 x 2.5"/3.5" HDD SAS/SATA, 2x1000Base-T, two 1200W redundant power supplies.
--------------	--



#### ORDERING INFORMATION

SNR-SR4210GPU	Server platform 4U SNR-SR4210GPU, supporting up to two Intel Xeon Scalable processors, DDR4, 4x2.5"/3.5" HDD, 4x1000Base-T, four 1200W power supplies, up to 10 GPU cards.
---------------	--





### EXPANSION BASKETS

#### ORDERING INFORMATION

SNR-SL201-2.5	Expansion Basket for 2 2.5" SATA/SAS Disks for RS/RE Series SNR Servers
SNR-SL201-3.5	Expansion Basket for 2 3.5" SATA/SAS Disks for RS/RE Series SNR Servers
SNR-SL201-U.2	Expansion Basket for 2 2.5" U.2 disks for RS/RE Series SNR servers
SNR-RM1110-BP-NV-PK	NVME Backplane Kit for SNR-SR1310RS
SNR-RM2112-BP-NV-PK	NVME Backplane Kit for SNR-SR2312RS



### POWER SUPPLY UNITS

#### ORDERING INFORMATION

SNR-GC550PMP	SNR Server Power Supply Unit, 550W, GC550PMP
SNR-GC800PMP	SNR Server Power Supply Unit, 800W, GC800PMP
SNR-GC1300PMP	SNR Server Power Supply Unit, 1300W, GC1300PMP
SNR-GC1600PMP	SNR Server Power Supply Unit, 1600W, GC1600PMP



### ADAPTERS

#### ORDERING INFORMATION

PCIe 3.0:	
SNR-RM1110-PCIEB2	1x PCI-Ex16 Adapter for SR 1U RS/RE Series Servers
SNR-RM2112-PCIEB1	1x PCI-Ex16 / 1x PCI-E x8 Adapter for RS/RE Series SNR 2U Servers
SNR-RM2112-PCIEB2	3xPCIEx8 Adapter for RS/RE RM2112-PCIEB2 PCBA VER.B Series SNR 2U Servers
SNR-RM2112-PCIEB3	2x PCIe x8 Adapter for SNR 2U RS/RE Series Servers
SNR-RM2112-PCIEB4	2x PCIe x8 Adapter for SNR 2U, 4U RS/RE Series Servers, slot4 SNRRM2112-PCIEB4
PCIe 4.0:	
SNR-SL2112-748-PCIE13-M	Adapter 1x PCIe 4.0x16 / 2xPCIe 4.0x8 HH for SNR 2U RS/RE Series Servers
SNR-SL2112-748-PCIE14-M	2x PCIe 4.0x16 FH Adapter for SNR 2U RS/RE Series Servers
SNR-SL1104-748-PCIE1-M	1x PCIe 4.0 x16 Adapter for SR 1U RS/RE Series Servers



### COOLING FANS

#### ORDERING INFORMATION

SNR-GBGX8038-155H-L70-6P	Cooling fan for SNR server, 2U
SNR-GFC0412DS-SM06WQJ	Cooling fan for SNR server, 1U

