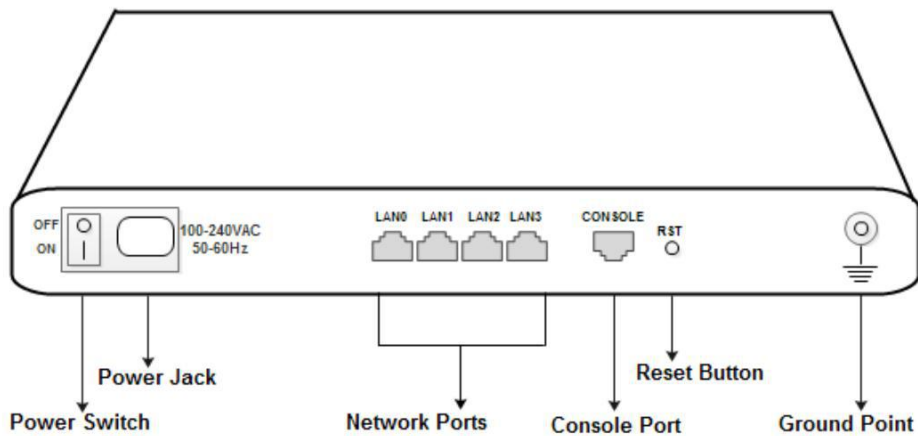
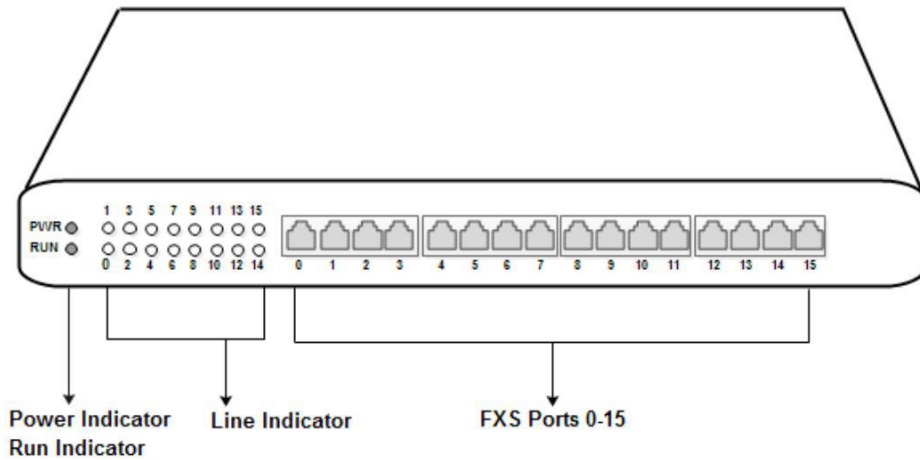


# 1 VG2000-16S Appearance



# 2 Number of Ports

| Port Type<br>Gateway | Console | LAN | FXS (RJ11) | FXS (RJ21) | FXS (RJ45) |
|----------------------|---------|-----|------------|------------|------------|
| DAG2000-16S          | 1       | 4   | 16         | 0          | 0          |

### 3 Description of Indicators

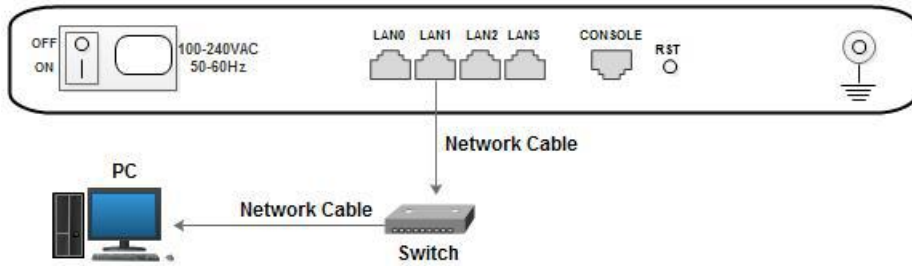
| Indicator | Name                        | Status              | Description  |
|-----------|-----------------------------|---------------------|--|
| PWR       | Power Indicator             | On Green            | The gateway is powered on.   |
|           |                             | On Dull             | There is no power supply or power supply is abnormal.                  |
| RUN       | Running Indicator           | Slow Flash          | The gateway is running properly.                                       |
|           |                             | Quick Flash         | SIP account is registered successfully.                                |
|           |                             | No Flash/On Dull    | The gateway is running improperly.                                     |
| FXS       | Line Indicators             | On Green            | FXS port is currently occupied by a call.                              |
|           |                             | On Dull             | FXS port is idle or FXS port is faulty.                                |
| WAN/LAN   | Indicator for Network Link  | On Green with Flash | The gateway is properly connected to network.                          |
|           |                             | On Dull             | The gateway is not connected to network or the connection is improper. |
|           | Indicator for Network Speed | On Green            | Network speed is 100Mbps.  |
|           |                             | On Dull             | Network speed is 10Mbps.   |

### 4 Installation Attentions

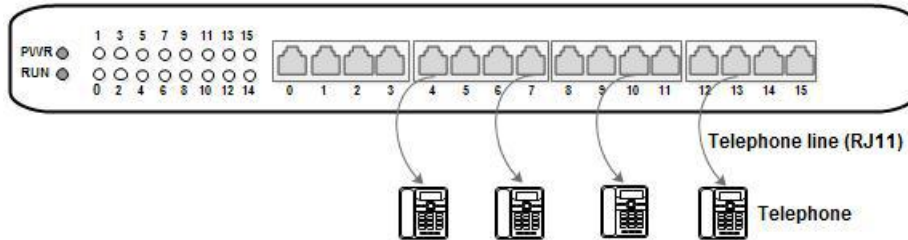
1. Please separate power cables with telephone lines so as to reduce the interference with telephone calls.
2. The adapter of VG2000-16S accepts AC input voltage of 100-240V. Please ensure stable and safe power supply.
3. To guarantee stabilized running of VG2000-16S, please ensure there is enough network bandwidth.
4. To ensure the gateway can work normally, you'd better install the gateway in a device room where temperature and humidity are appropriate.
5. You'd better place the gateway on a flat surface or a device cabinet. To effectively maximize heat dissipation, do not pile up the gateway with other devices .

# 5 Connection Instruction

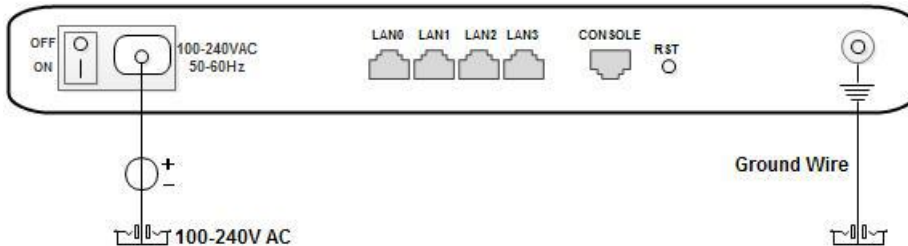
## Network Connection



## Telephone Connection



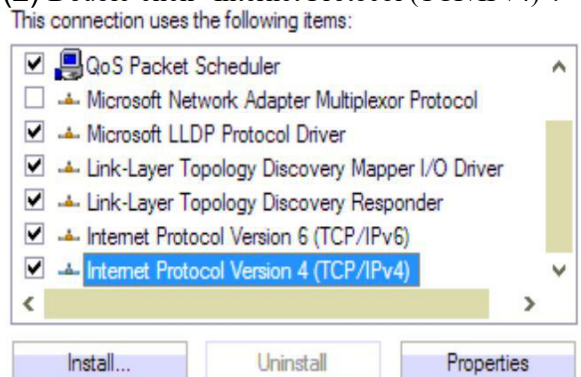
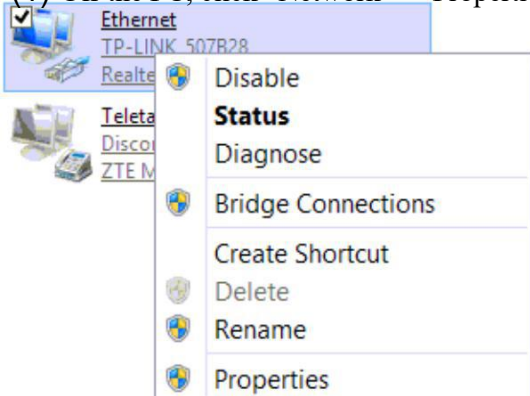
## Power Connection & Grounding



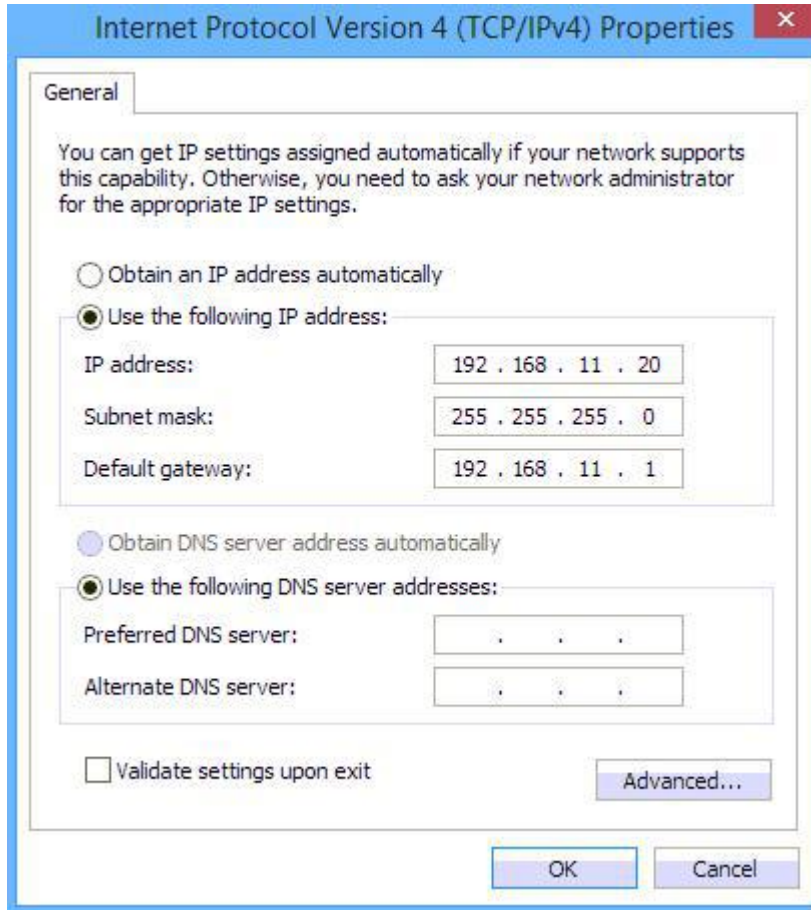
# 6 Modify PC's IP Address

Modify the IP address of PC to make it at the same network segment with the VG2000-16S gateway, since the default IP address of the gateway is 192.168.11.1.

- (1) On the PC, click “Network Properties”. (2) Double-click “Internet Protocol (TCP/IPv4)”.



(3) Select “Use following IP address”, and then enter an available IP address which is at the same network segment with “192.168.11.1”.



## 7 Log into VG2000-16S

Open a web browser and enter the IP address of VG2000-16S (the default IP is 192.168.11.1). Then the login GUI will be displayed. Both the default username and password are admin.

## 8 Modify IP Address of VG2000-16S

If you want to modify the IP address of VG2000-16S, please click “Network → Local Network” in the navigation tree on the left, and then input new IP address and DNS server address on the displayed interface.

## 9 Configure SIP Server Information

Log into VG2000-16S, and then click **SIP Server** in the navigation tree and then enter the address of the SIP server which is to be registered. Click **Save** in the last.

### SIP Server

**Primary SIP Server**

|   |  |
|---|--|
| Primary SIP Server Address              | <input type="text" value="172.16.95.110"/> |
| Primary SIP Server Port (Default: 5060) | <input type="text" value="5060"/>          |
| Registration Expires (Default: 1800)    | <input type="text" value="1800"/> s        |
| Heartbeat                               | <input type="checkbox"/> Enable            |


Click **Port** in the navigation tree on the left, and then click **Add**. Input the SIP account and authentication password assigned by the SIP server.

### Port Add

|                                 |  |
|---------------------------------|--|
| Port                            | <input type="text" value="1"/>             |
| Disable Port                    | <input type="checkbox"/>                   |
| Registration                    | <input checked="" type="checkbox"/> Enable |
| Primary Display Name            | <input type="text" value="10001"/>         |
| Primary SIP User ID             | <input type="text" value="10001"/>         |
| Primary Authenticate ID         | <input type="text" value="10001"/>         |
| Primary Authenticate Password   | <input type="text" value="10001"/>         |
| Secondary Display Name          | <input type="text"/>                       |
| Secondary SIP User ID           | <input type="text"/>                       |
| Secondary Authenticate ID       | <input type="text"/>                       |
| Secondary Authenticate Password | <input type="text"/>                       |

Click **Save** and then restart the VG2000-16S gateway for the new configurations to take effect.

## 10 Basic Operations

- Dial \*158# to query the IP address of LAN port of VG2000-16S;
- Dial \*114# to query the telephone number of a FXS port;
- Dial \*165\*000000# to restore default IP address, username and password;
- Restore factory default settings: (1) dial \*166\*000000#; (2) Press the RST button for 7 seconds; (3) Log into the gateway and then click “**Tools**  **Factory Reset**”. Then click **Apply**, and restart the gateway.
- Dial \*111# to restart VG2000-16S.

## 11 Detailed Configuration & Parameter Explanation

This document only provides instructions for quick installation and basic configuration. For detailed explanation of functions and parameters, please make reference to VG2000-16S VoIP Gateway User Manual, or ask for online technical support.