

# **iSearch**

## **User Manual**

**Ver 2.13**

# Contents

<b>Section I Installation of iSearch .....</b>	<b>- 1 -</b>
<b>Section II Application of iSearch .....</b>	<b>- 3 -</b>
2.1 Set of All Parameters .....	- 3 -
2.2 Update Obtained Information .....	- 4 -
2.3 SNMP Update .....	- 4 -
2.4 Factory Parameter Set .....	- 5 -
<b>Section III Display Interface .....</b>	<b>- 6 -</b>

## Section I Installation of iSearch

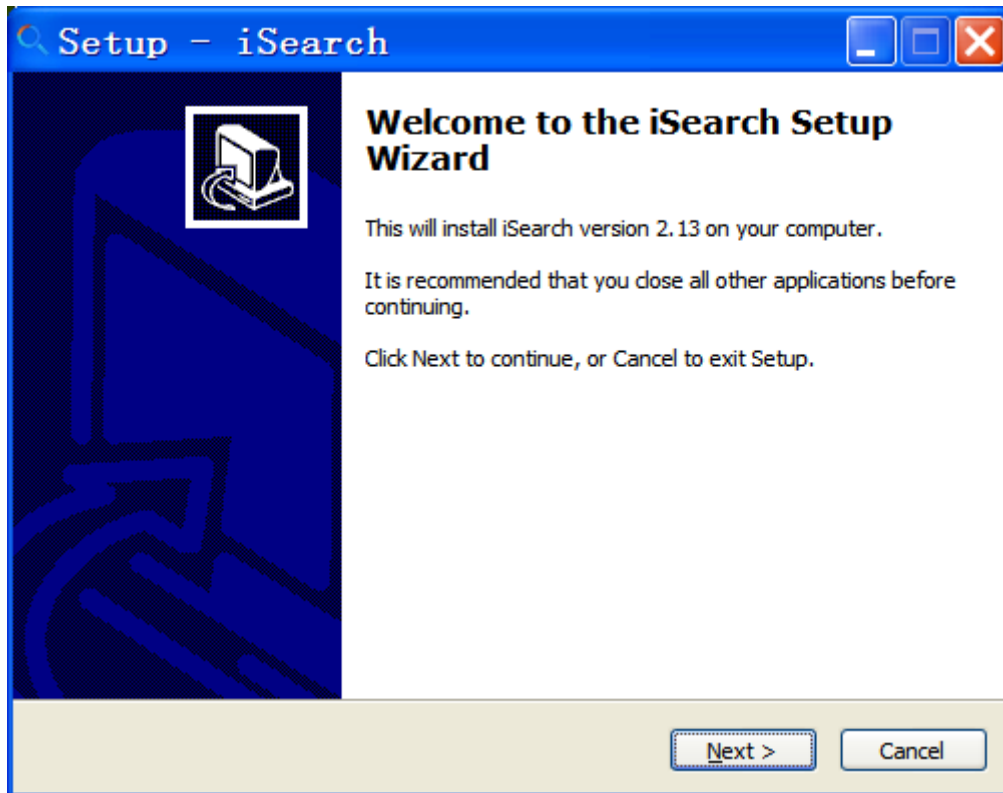


Figure 1 Installation Interface

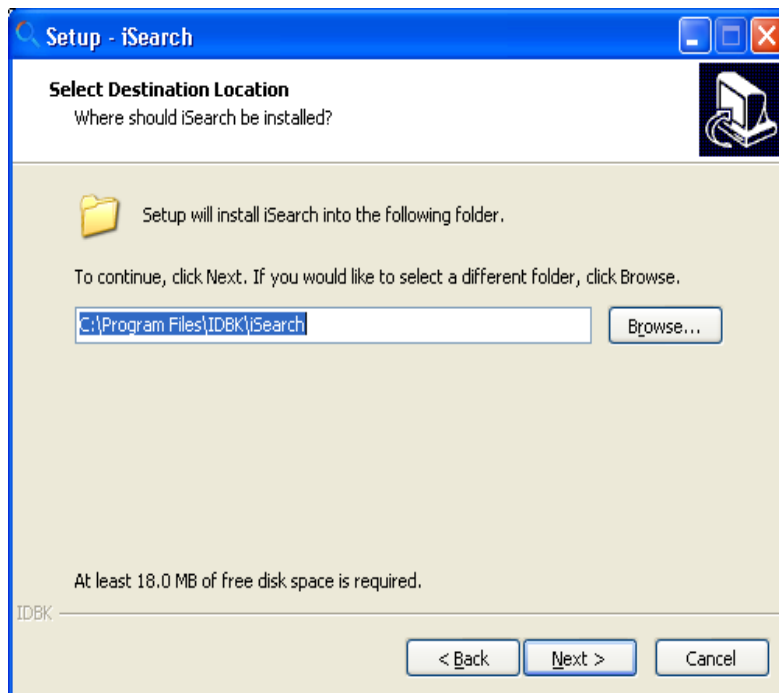


Figure 2 Selection of Installation Path

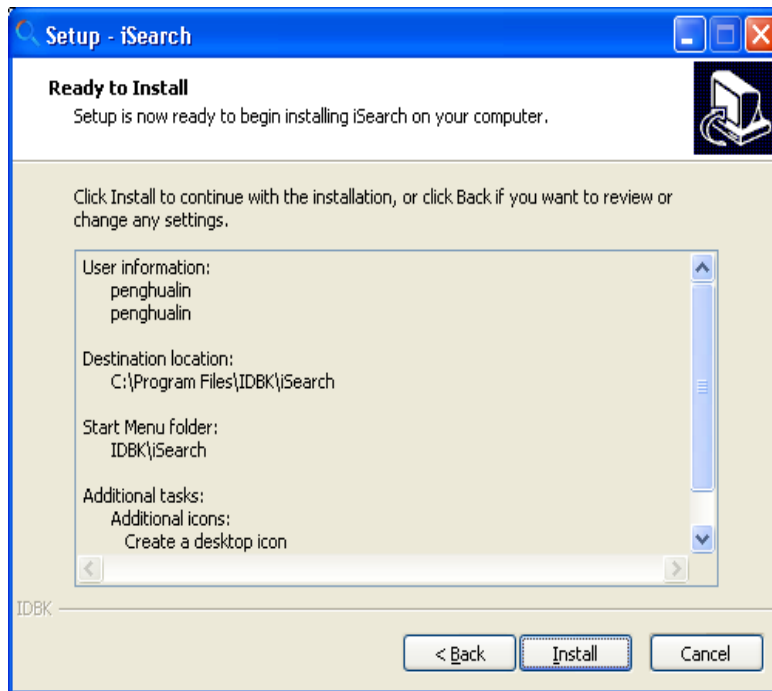


Figure 3 Ready to install

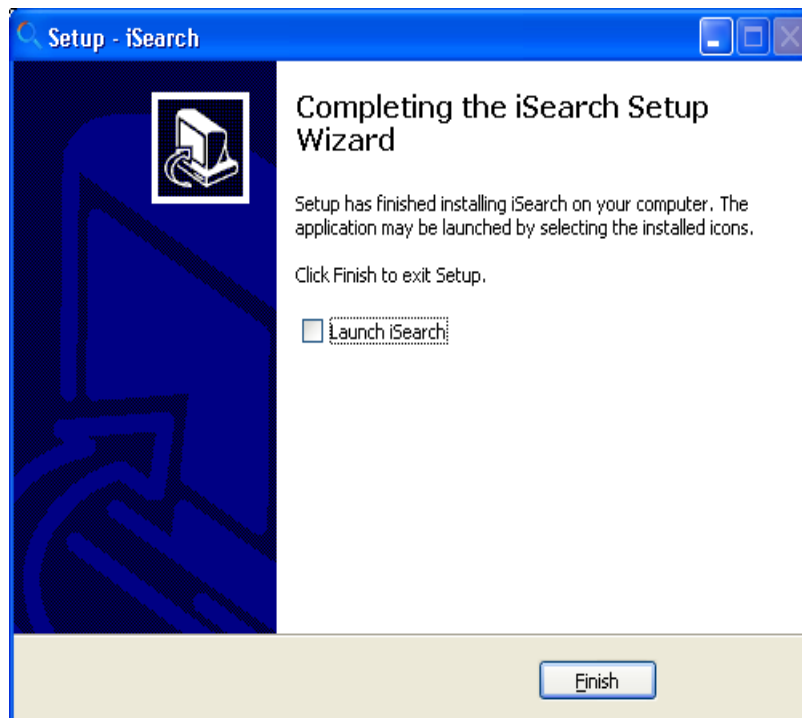


Figure 4 Installation Confirmation

## Section II Application of iSearch

Start iSearch, you will enter the language select interface, such as the following picture.



Figure 5 language select interface

Select a language, such as English, then click OK button to enter the following main interface. Left buttons are all functional buttons, and the searched related information is shown on the right.

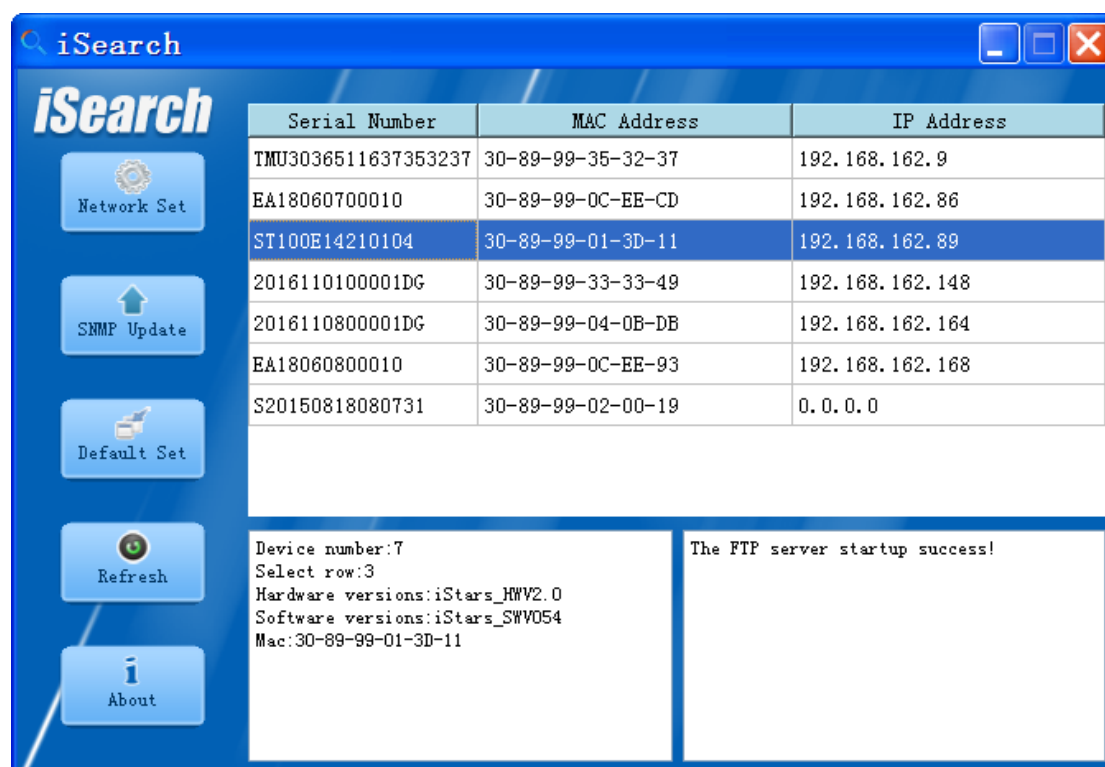


Figure 6 Main Interface of iSearch

### 2.1 Set of All Parameters

Start iSearch, and click <NetworkSet> in left, the following set interface will be displayed:

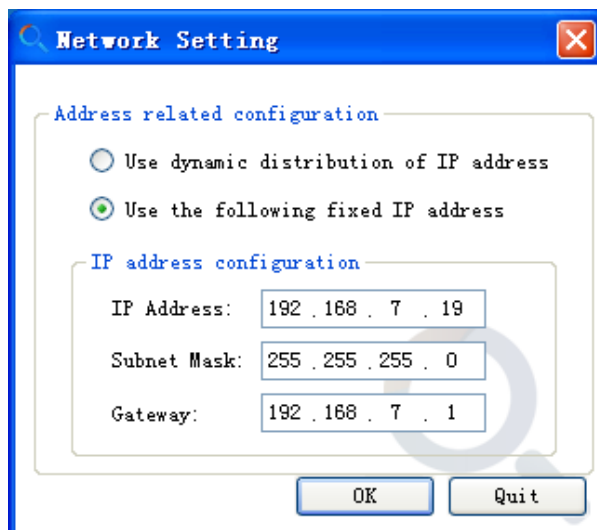


Figure 7 Set Interface of All Parameters

Address relative set: set the IP address, subnet mask, and gateway.

When using it in the first time, click button of confirm after finishing the setting, and then set of all parameters can be finished.

When clicking “dynamically distribute IP address”, all parameters of IP address will be obtained directly by the system.

## 2.2 Update Obtained Information

Click button of “Refresh” to update related information of main interface such as series number, MAC address, and IP address, etc.

## 2.3 SNMP Update

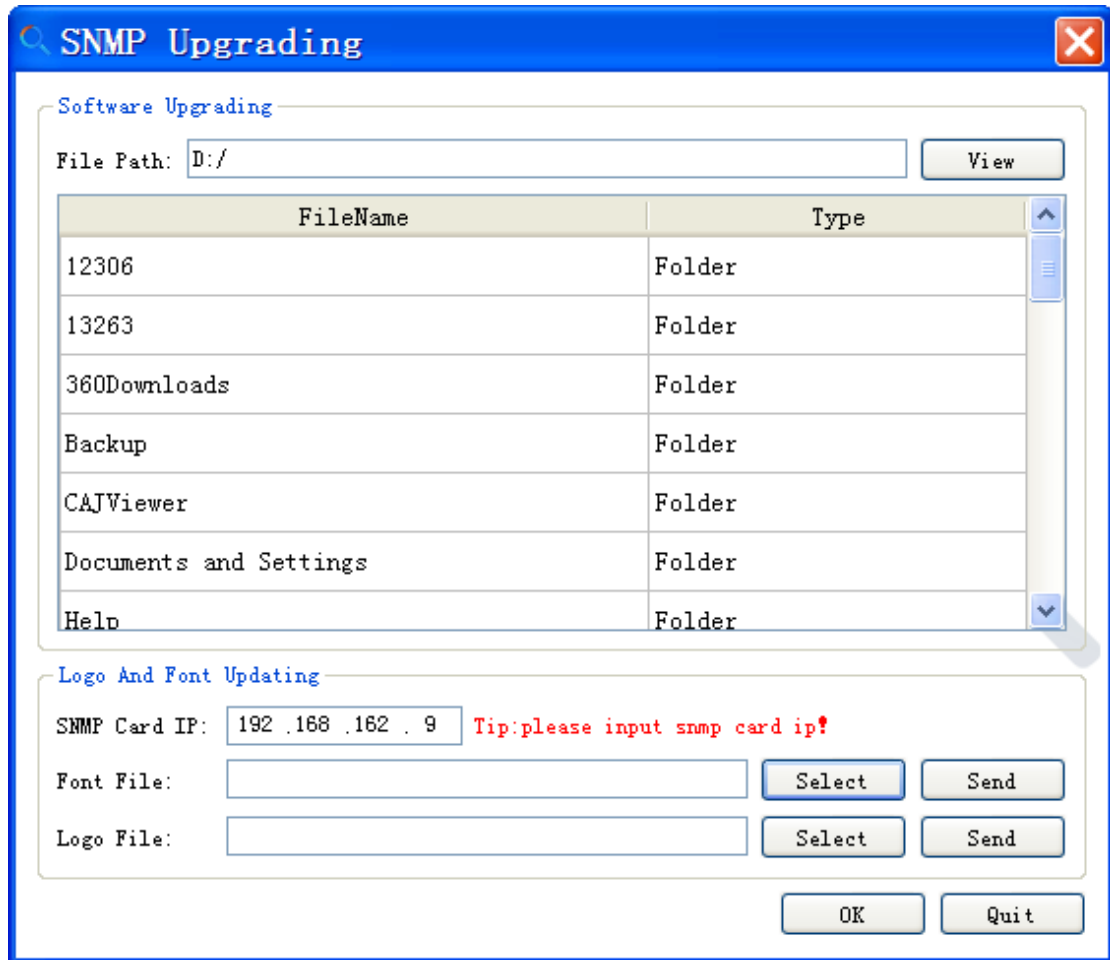


Figure 8 Version Update Interface

### 1)SNMP Update

Click button of “SNMP Update”, start local FTP server, and the dialogue box of “SNMP Upgrading” will be popped. As shown in above figure, click the button behind document path, and then shared folder of local server will be changed. (Login name of initial server is EAST and password is EAST.)

### 2)Logo and font update

Select the font and logo file that you have made locally and send it to SNMP.

**Note:** Software upgrading is that SNMP card program will be updated. The client software is a FTP server, update program is on the FTP server (file path must be English). Then opening the web monitor,the web monitor is connected to the FTP server,finally upgrading program.

## 2.4 Factory Parameter Set

This function used for customer service

## Section III Display Interface

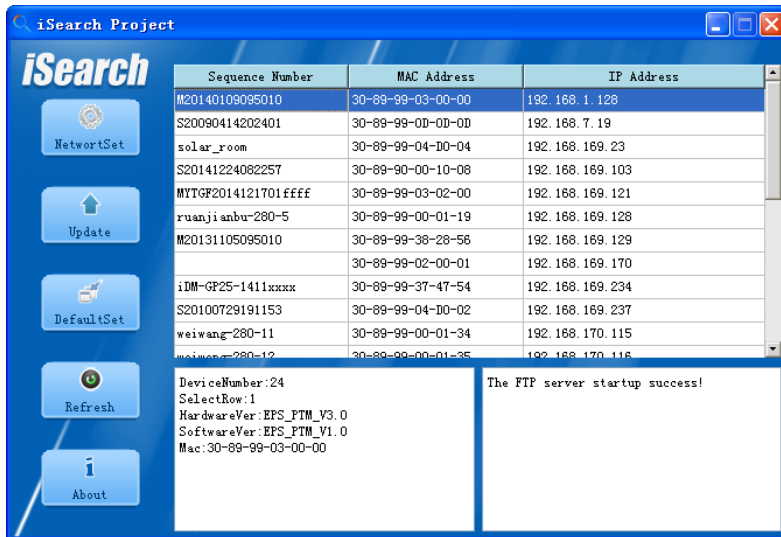


Figure 9 Display Interface of Search Information

The search information display interface includes two list information columns. The upper one is a display list box information field of search information, and the lower one is a detailed information display column of clicking any information in the information box of the list box.

### Search information display list box

Start the iSearch, it will automatically search all information of every SNMP card which will be displayed in this list box.

- (1) Select a message by left click of mouse, and then information of corresponding SNMP card such as hardware version, software version, and MAC address will be displayed in "detail information box of SNMP card".
- (2) Double-click the SNMP card into the corresponding monitoring web pages. As shown in following figure, the corresponding webpage login box will be popped, input correct username and password to enter into corresponding interface of monitoring webpage.
- (3) Input corresponding website to check whether it is set successfully.

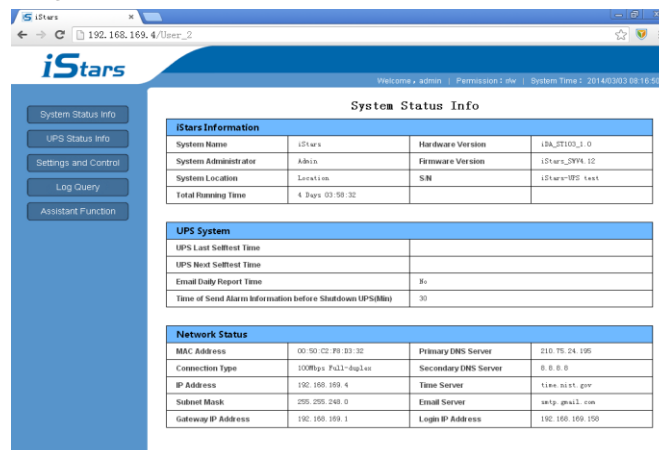


Figure 10 Monitoring Webpage