

iSmartView

User Manual

Ver 2.0

Table of Contents

TABLE OF CONTENTS	- 1 -
PART I INTRODUCTION	- 1 -
PART II SYSTEM ENVIRONMENT	- 1 -
PART III INSTALLING SOFTWARE	- 2 -
PART IV USING SOFTWARE	- 3 -
PART V FUNCTION DESCRIPTION	- 4 -
5.1 QUICK ACCESS TOOLBAR	- 4 -
5.2 SYSTEM SETUP MENU	- 5 -
5.2.1 System setup	- 5 -
5.2.2 Mail setup	- 6 -
5.2.3 SMS setup	- 7 -
5.2.4 Log out	- 8 -
5.3 DEVICE MENU	- 9 -
5.3.1 Add a device	- 9 -
5.3.2 Modify a device	- 9 -
5.3.3 Remove a device	- 10 -
5.3.4 Import a device	- 10 -
5.3.5 Export a device	- 10 -
5.4 NEW EVENT MENU	- 11 -
5.4.1 Audible alarm	- 11 -
5.4.2 SMS Event	- 11 -
5.4.3 Confirmed Events	- 12 -
5.5 USER MENU	- 12 -
5.5.1 Change password	- 12 -
5.5.2 User management	- 13 -
5.5 LOG	- 14 -
5.5.1 Data logging	- 14 -
5.5.2 Event logging	- 15 -
5.6 DISPLAY MODE	- 16 -
5.6.1 Map display	- 16 -
5.6.2 Import local map	- 17 -
PART VI SOFTWARE INTERFACE DESCRIPTION	- 18 -
6.1 OVERALL INTERFACE OF THE SYSTEM	- 18 -
6.2 REAL-TIME DATA INTERFACE	- 19 -
6.3 REAL-TIME CHART INTERFACE	- 19 -
6.4 REAL-TIME STATUS INTERFACE	- 21 -
6.5 PRODUCT INFORMATION INTERFACE	- 21 -
6.6 REMOTE CONTROL INTERFACE	- 22 -

Part I Introduction

iSmartView is a set of UPS centralized monitoring and management software operates on PC platform, UPS centralized monitoring and management could be realized through network connections.

- ✧ Easy to understand visual operation interface.
- ✧ Remote control UPS device, including UPS self-testing, UPS startup & shutdown.
- ✧ External message modem could be used to send UPS warnings.
- ✧ Able to send email warnings.
- ✧ Available static map browsing.

Part II System Environment

Support the following operating systems.

- ✧ Windows 8 32-bit/64-bit
- ✧ Windows 7 32-bit/64-bit
- ✧ Windows Vista 32-bit/64-bit
- ✧ Windows XP 32-bit/64-bit
- ✧ Windows Server 32-bit/64-bit
- ✧ Linux/X11 32-bit/64-bit

Part III Installing Software

The following descriptions are operations for 32-bit systems, operation steps of 64-bit systems are the same.

Installation steps of windows

Step 1 Put compact disc into CD driver, open the compact disc and find iSmartView folder, click iSmartView_V2.07.RC.140306.exe file to install.

Step 2 After installation, find iSmartView component in windows program, if you choose to produce desktop icon and rapid entry bar in installation, then the icon will be produced in relevant position.

Step 3 Click windows system program palette - iSmartView, then you could conduct program management.

Installation steps of Linux

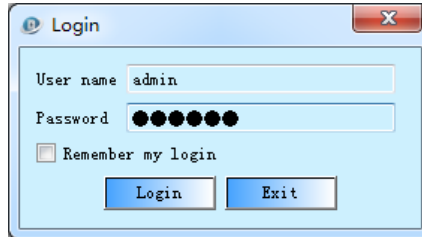
Step 1 Put compact disc into CD driver, open the compact disc and find iSmartView_linux folder, copy it with root user to the required file path, and modify the folder, use the command “`chmod -R 777 iSmartView32.bin`”.

Step 2 Open Terminal under root user, modify operating authorization of iSmartView by using command “`chmod +x iSmartView`”.

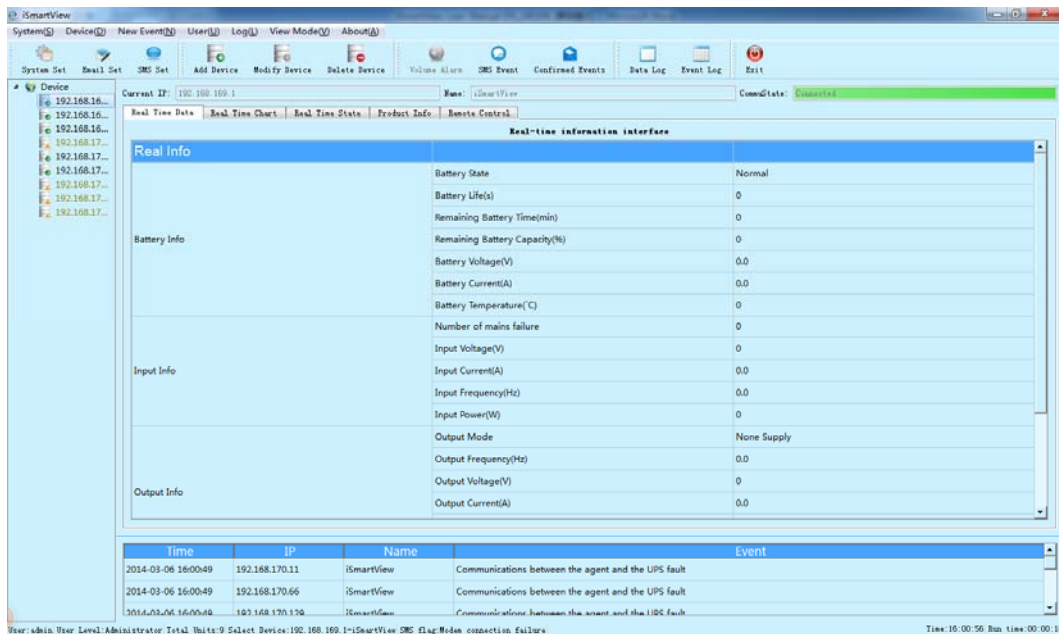
Step 3 Run iSmartView to manage UPS on the network / iSmartView.




Part IV Using Software

Click iSmartView icon to display login window, enter user name and password as shown below to log in main interface of the software, initialized user name admin, password 123456.



There is no device after log in, you could click the right mouse button in device management at the left side, or click corresponding menu bar to add devices, as shown below, and nine devices have been added in the list.












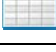


-  Means communication of UPS network is normal
-  Means connection of UPS network is lost
-  Means there are alarm events of UPS

Part V Function Description

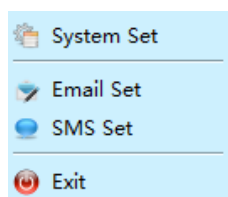
5.1 Quick access toolbar



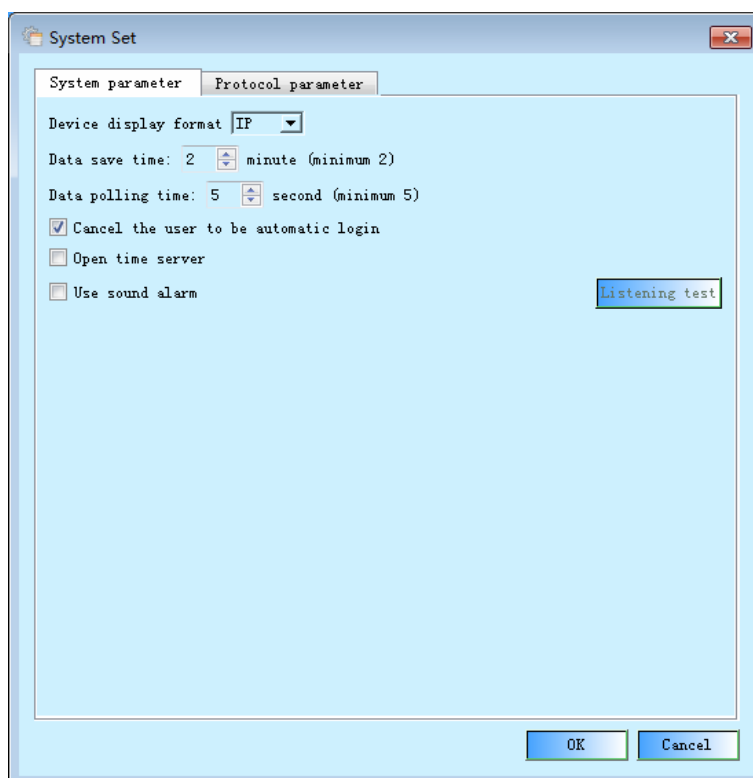
	System parameter setting button
	Mail parameter setting button
	SMS parameter setting button
	Add a device button
	Remove a device button, only effective when the device was chosen
	Modify a device button, only effective when the device was chosen
	Stop audio alarm button, when new events happen, the system will give an alarm, then the button is effective; click the button to stop the system giving an alarm.
	SMS event button, the button is effective after used the SMS function
	New events confirm button
	Data logging button, view data logging of currently chosen IP
	Event logging button, view event logging of currently chosen IP
	Button of log out the system

5.2 System setup menu

System setup menu is as shown below:

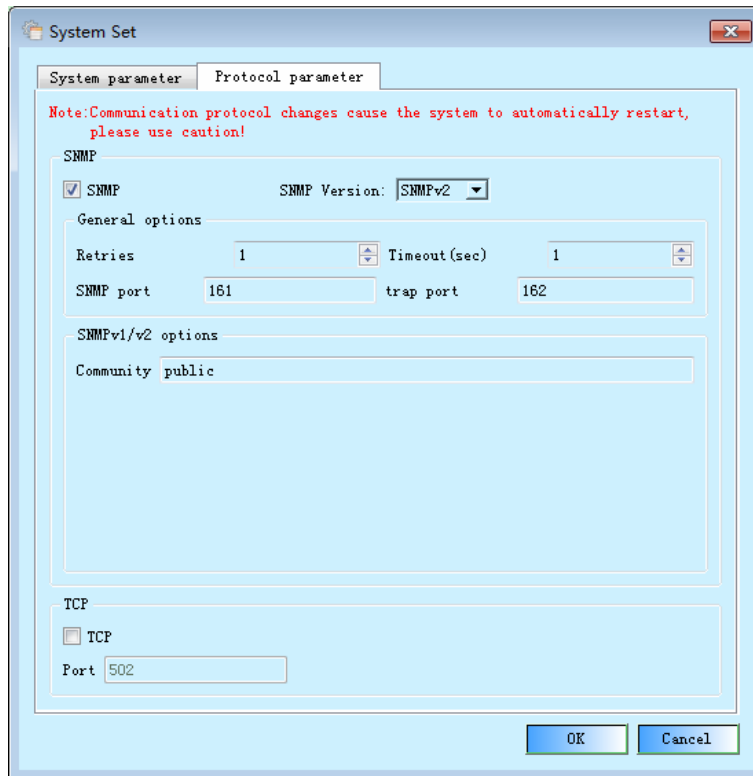


5.2.1 System setup



System parameter

Set interval time of data storage, data polling time, whether to cancel user automatic login or not, start time server and audible alarm setup.



Protocol parameter setup

Set protocol type, and relevant parameter information of the protocol.

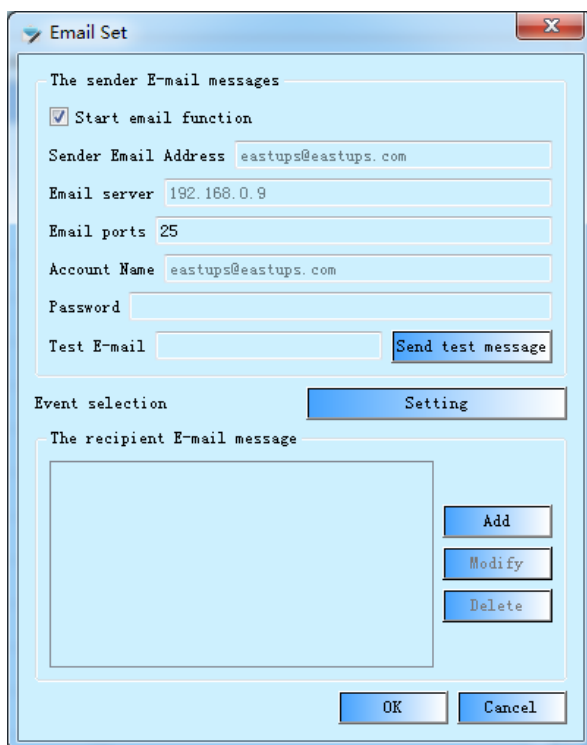


Audible alarm function is not available under the Linux system.

Data polling time can be set to a minimum 5s, if you add the number of devices relatively long time, in order to ensure the normal data communications, it is best to increase the relative value of the polling data. If using the SNMP protocol communications, timeout value parameter should also be relatively increased.

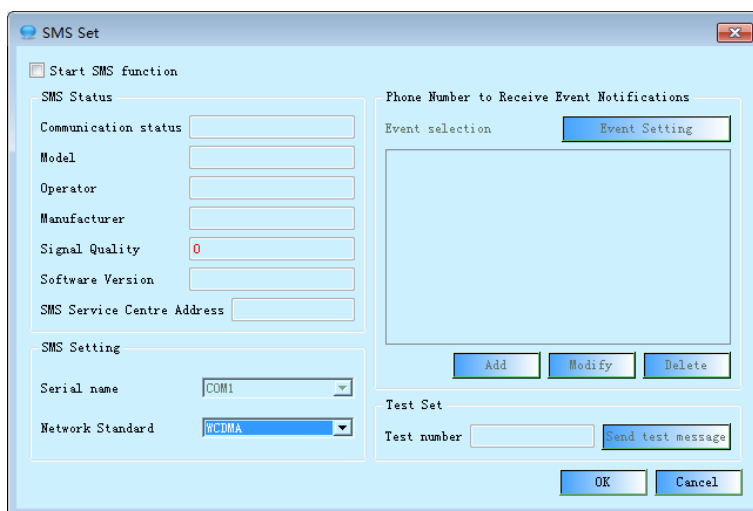
5.2.2 Mail setup


Start related functions of mail alarm, it is needless to modify when server port is default.



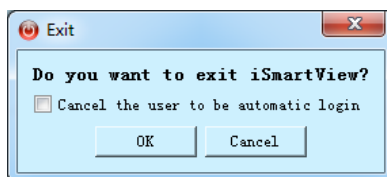
5.2.3 SMS setup

Start related functions of SMS alarm.



 SMS alarm function of the software could be used when SMS alarm module of company is purchased.

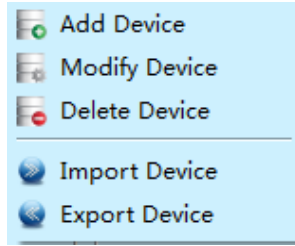
5.2.4 Log out



Click this button to exit the system will pop up the corresponding dialog box that prompts you whether you want to turn off the current operation of the system. As well as whether the user the option to cancel the automatic login, select this option and click the OK button, the system will exit and the corresponding operation users automatic logon feature, you will need to re-edit the login information next time the user logs in, the button with the main form closes the same button functions.

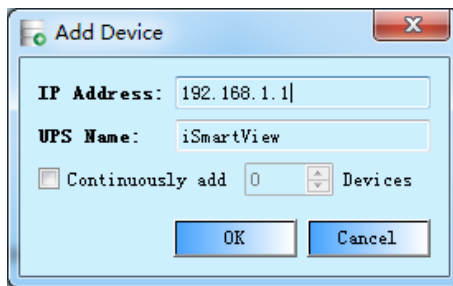
5.3 Device menu

Device menu is as shown below:



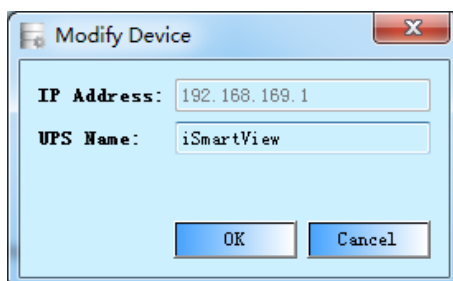
5.3.1 Add a device

After chose this option, you could add UPS device of relevant ip, and you could choose to continuously add devices, click the left mouse button to start this function, or click menu bar to add shortcut of the device.



5.3.2 Modify a device

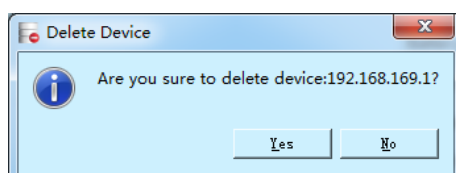
Choose relevant UPS from the device management list, this option turns to clickable status from gray, modify the chosen device after clicking, click the right mouse button to start this function, or click menu bar to modify shortcut of the device.



Only relevant device name could be modified, device IP could not be modified.

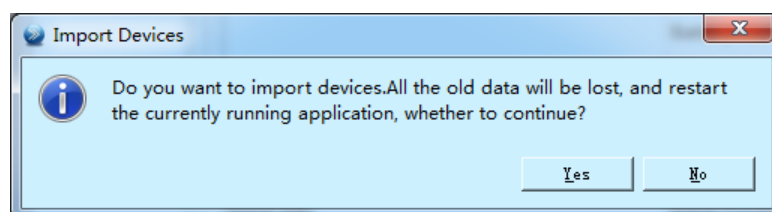
5.3.3 Remove a device

Choose relevant UPS from the device management list, this option turns to clickable status from gray, remove the chosen device after clicking, click the right mouse button to start this function, or click menu bar to remove shortcut of the device.



5.3.4 Import a device

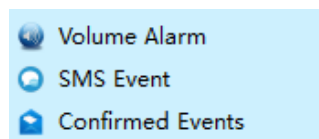
Please note that previous data of the user will be lost if using this function, and name import file as device.db, or else, this function will be invalid and data of the user will be lost. After successful import will close the currently running program, the user can simply restart the software.



5.3.5 Export a device

This function shall be used to back-up device list, prevent data of the user lost, back-up data when import a device. File format of the exported device shall be *.db.

5.4 New Event Menu



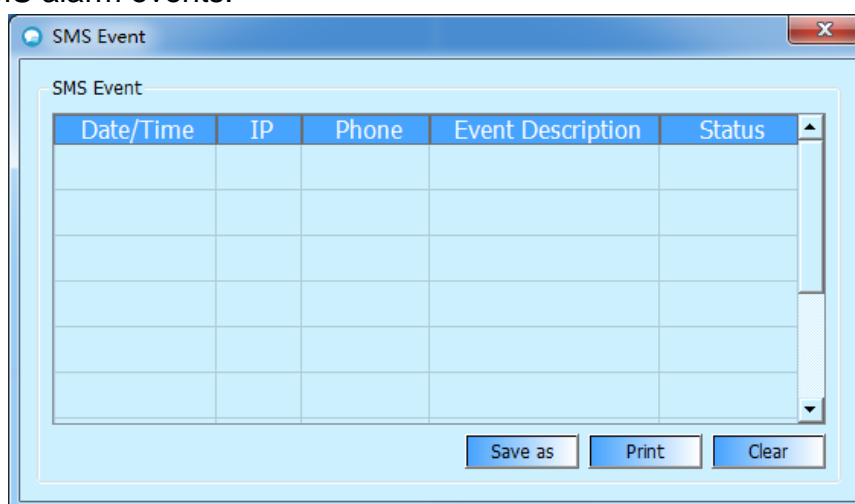
New Event menu confirmation packet voice alarm, SMS alarm event is recognized and confirmed three new events feature.

5.4.1 Audible alarm

The alarm button is used to end the current system triggered alarm. Confirm the "System Set/ System Parameter/ use sound alarm" is enabled, when a new event occurs, the system prompts an alarm sounds and the button is highlighted. Click this button to exit the system alarm. Users can also directly off the lower right corner of the computer through pop-up dialog box to end this incident prompt a warning tone.

5.4.2 SMS Event

SMS alarm event is recognized, when you start SMS alerts, this feature is enabled, the button will pop up after triggering the corresponding event message interface. With this interface, you can view the current situation to send SMS alarm events.

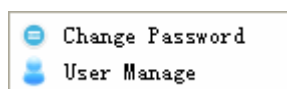


5.4.3 Confirmed Events

Users can confirm that all new one-time events through the button.

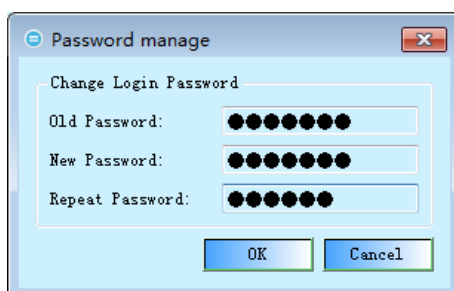
5.5 User menu

User menu includes two functions, change password and user management.



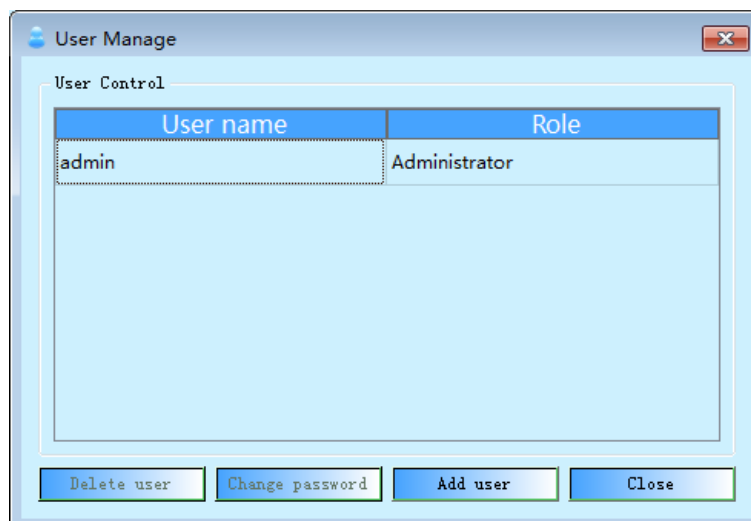
5.5.1 Change password

Modify password of current user.



5.5.2 User management

User management interface, manage user in current interface, user could in accordance with permission to remove, modify and add a user.



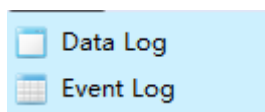
System administrator is only admin user, add is not allowed, and he owns all permissions, other added users shall not have the same name with him, admin user cannot be deleted.

Readable/writable user could be added by the administrator, and he could only operate management options.

Readable user could view device information, but could not operate any function of the software.

5.5 Log

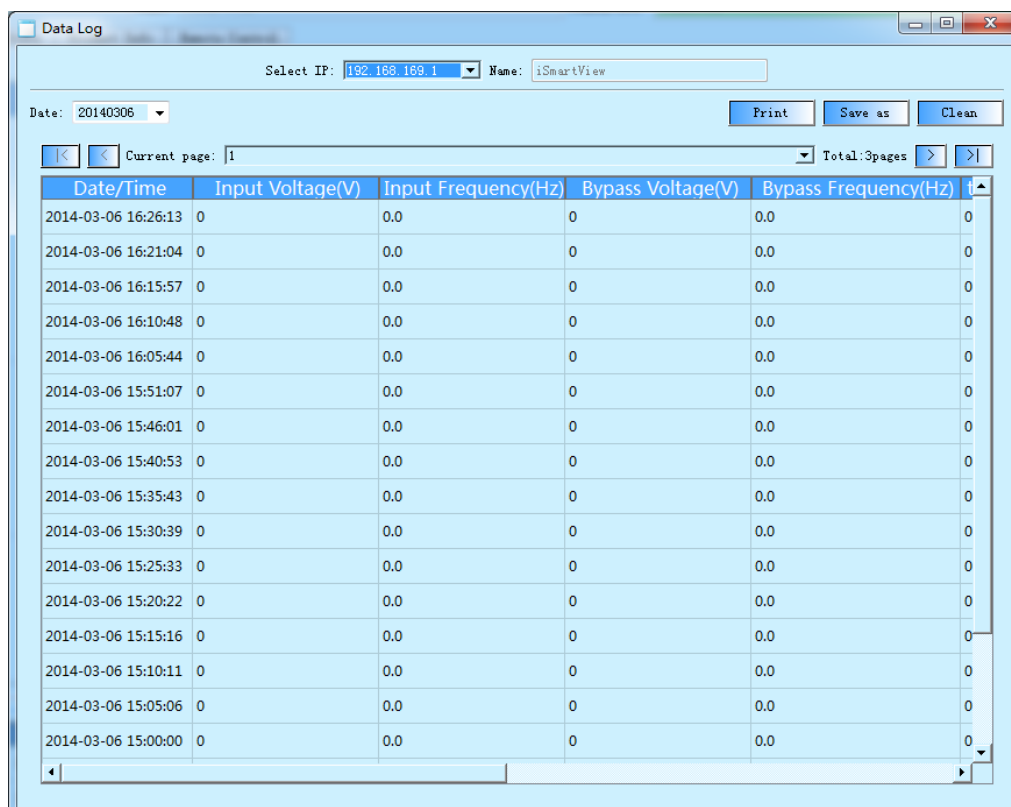
Log menu is as shown in the figure



Storage space and the longest keeping time of data logging and event logging are decided by space size of user's computer, therefore, the user shall in accordance with hard-disk space of the computer to clear away data and back-up data at regular intervals.

5.5.1 Data logging

Data logging show data logging of currently chosen IP, and record according to data keeping time interval of the system setup, the shortest recording time is 2 minutes, users could print, store data logging, and clear operations, note: read-only user has no operating authorization of data logging, printing and storage are current date logging, clear button could clear all data of the current IP.

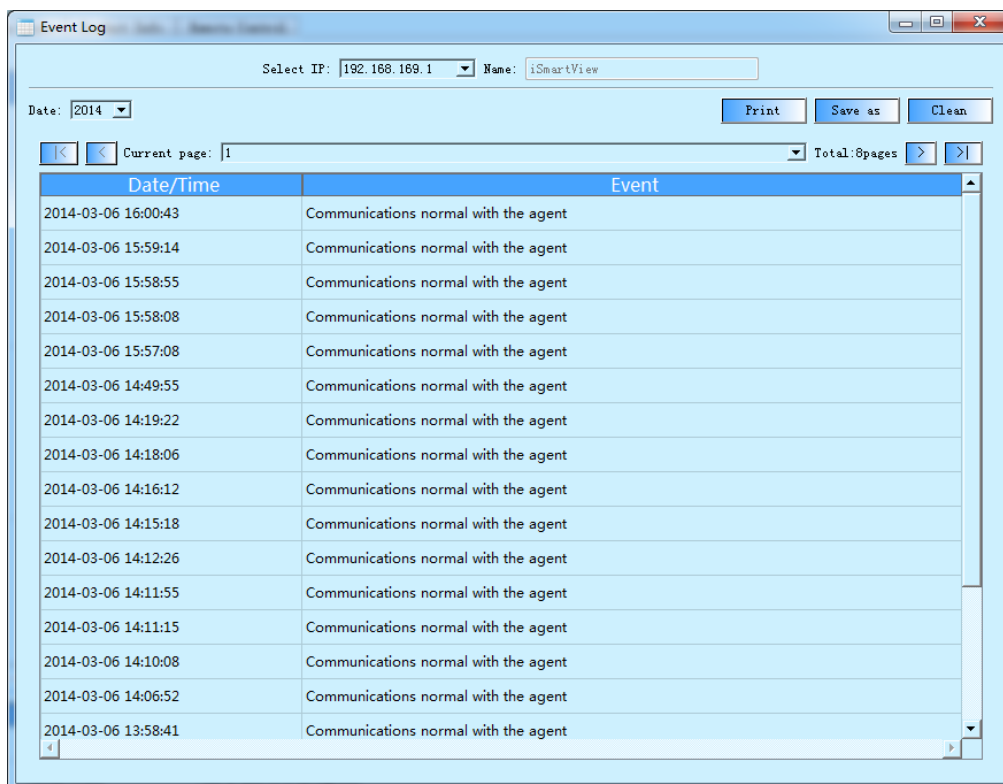


The screenshot shows a window titled 'Data Log' with a light blue background. At the top, there are fields for 'Select IP: 192.168.169.1' and 'Name: iSmartView'. Below these are buttons for 'Print', 'Save as', and 'Clean'. A 'Date:' dropdown is set to '20140306'. A navigation bar shows 'Current page: 1' and 'Total: 3pages'. The main area contains a table with the following columns: 'Date/Time', 'Input Voltage(V)', 'Input Frequency(Hz)', 'Bypass Voltage(V)', and 'Bypass Frequency(Hz)'. The table lists 17 rows of data, all showing '0' for the numerical values.

Date/Time	Input Voltage(V)	Input Frequency(Hz)	Bypass Voltage(V)	Bypass Frequency(Hz)
2014-03-06 16:26:13	0	0.0	0	0.0
2014-03-06 16:21:04	0	0.0	0	0.0
2014-03-06 16:15:57	0	0.0	0	0.0
2014-03-06 16:10:48	0	0.0	0	0.0
2014-03-06 16:05:44	0	0.0	0	0.0
2014-03-06 15:51:07	0	0.0	0	0.0
2014-03-06 15:46:01	0	0.0	0	0.0
2014-03-06 15:40:53	0	0.0	0	0.0
2014-03-06 15:35:43	0	0.0	0	0.0
2014-03-06 15:30:39	0	0.0	0	0.0
2014-03-06 15:25:33	0	0.0	0	0.0
2014-03-06 15:20:22	0	0.0	0	0.0
2014-03-06 15:15:16	0	0.0	0	0.0
2014-03-06 15:10:11	0	0.0	0	0.0
2014-03-06 15:05:06	0	0.0	0	0.0
2014-03-06 15:00:00	0	0.0	0	0.0

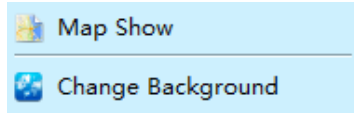
5.5.2 Event logging

Event logging record events of currently chosen IP, users could print, store data logging, and clear operations, note: read-only user has no operating authorization of data logging, printing and storage are current date logging, clear button could clear all data of the current IP.



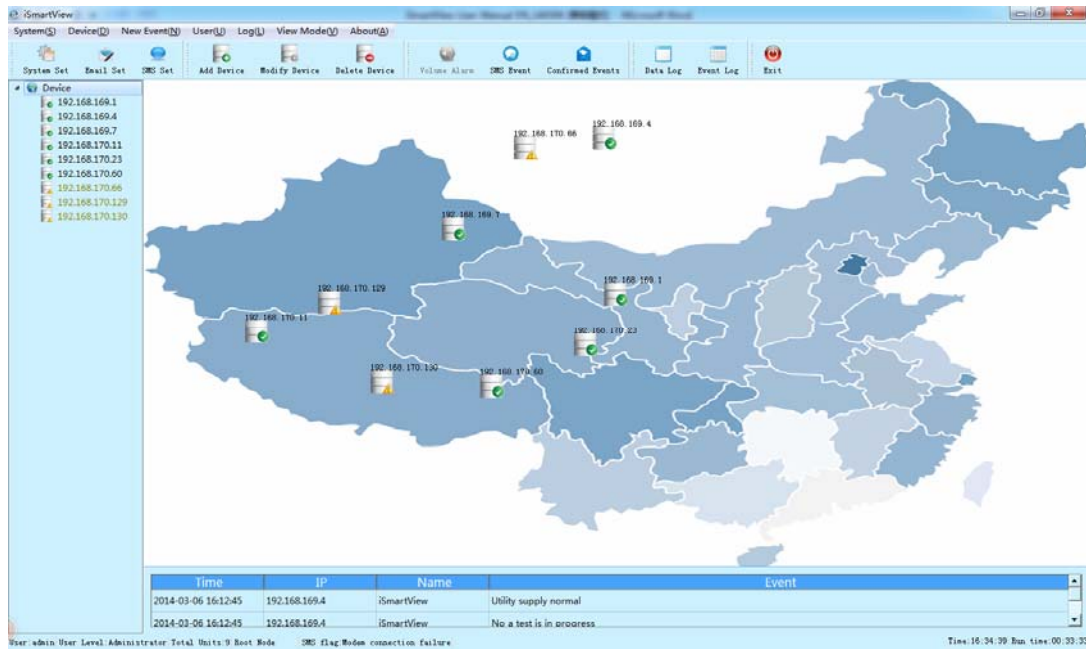
5.6 Display mode

Display mode is as shown below.



5.6.1 Map display

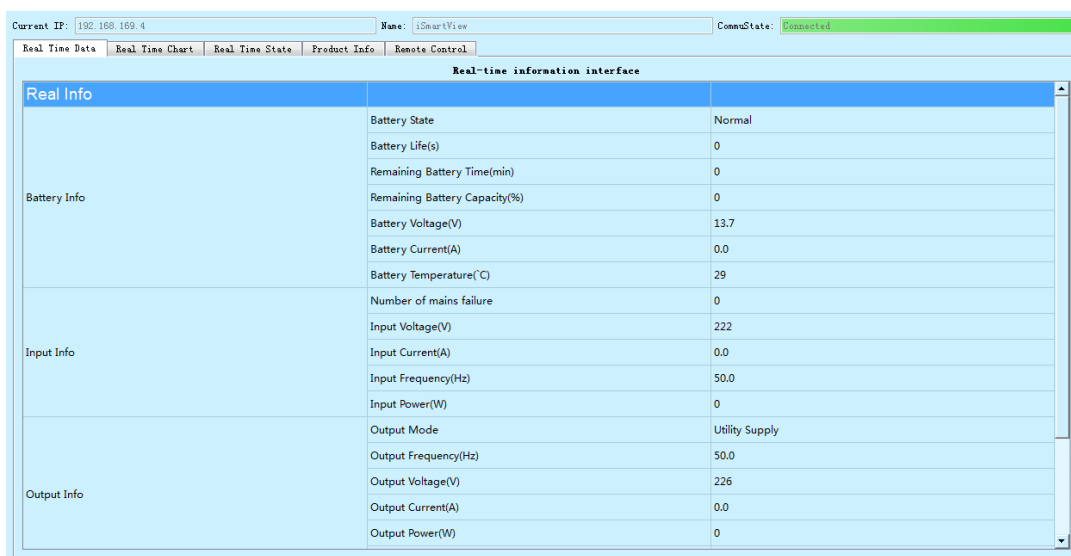
Map display displays device already exists on one local area panel, users could drag as required. Adjust regional position of each device. Additionally, users could choose a device from the map panel, then conducts add or delete operations, double-click a device to enter display interface of the device.



Attribute settings of one device is as shown below

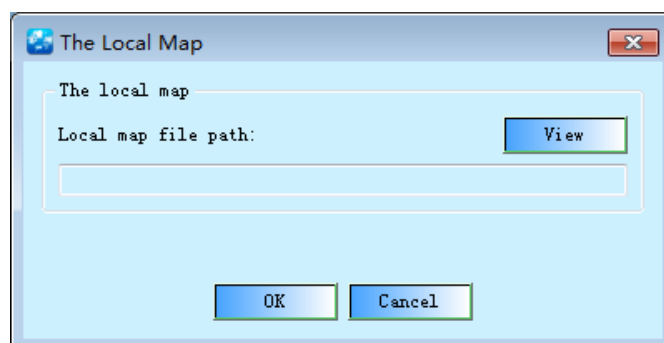


Double-click to enter interface of the device, as shown below



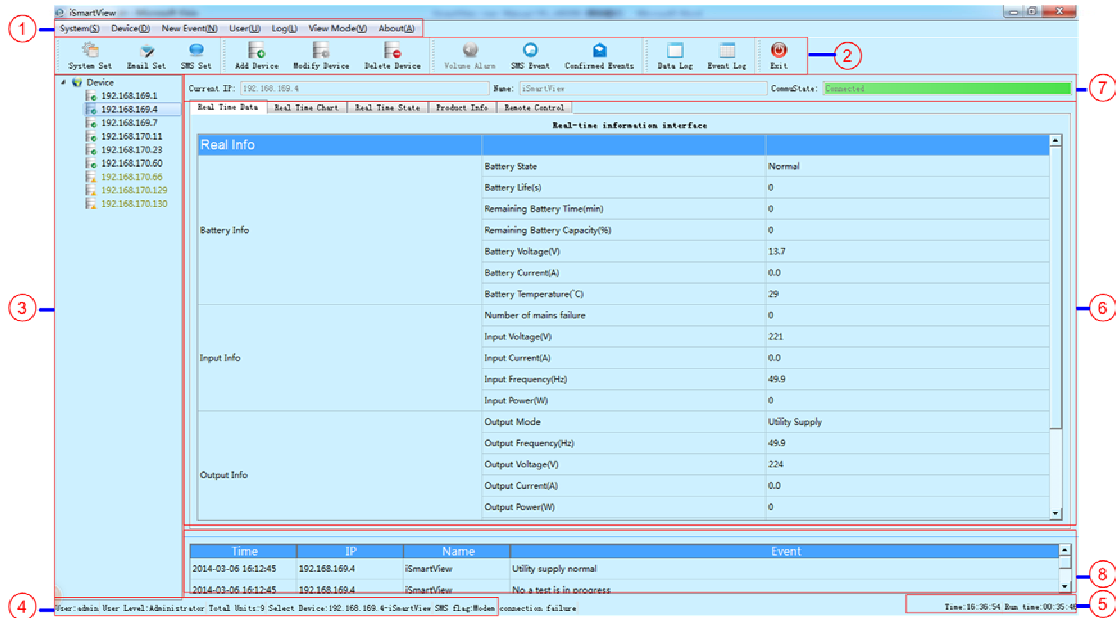
5.6.2 Import local map

Import local map option, users could import corresponding local map and take it as display background of the map.



Part VI Software Interface Description

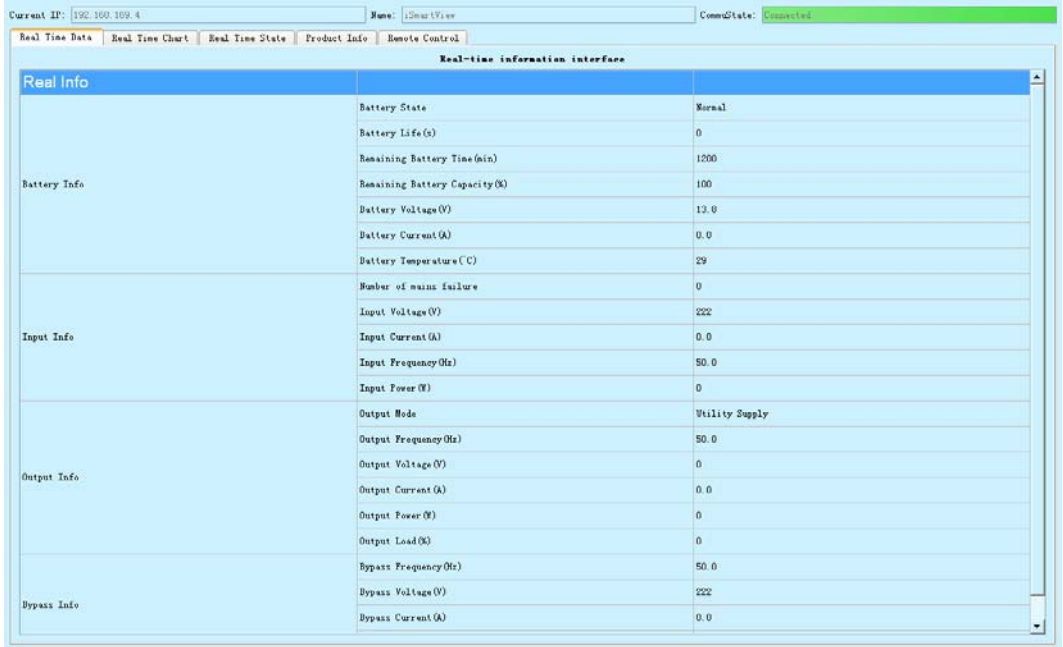
6.1 Overall interface of the system



- ① Software menu bar
- ② Software shortcut bar
- ③ Device management list, this list displays all current devices, and displays communication status of the device.
- ④ Display current login user and limits of authority, and currently chosen device.
- ⑤ Display total running time of the software and current system time.
- ⑥ Specific data display area of the device, including real-time data, real-time status, product information and remote control.
- ⑦ Communication status bar of the device.
- ⑧ Real-time event display bar

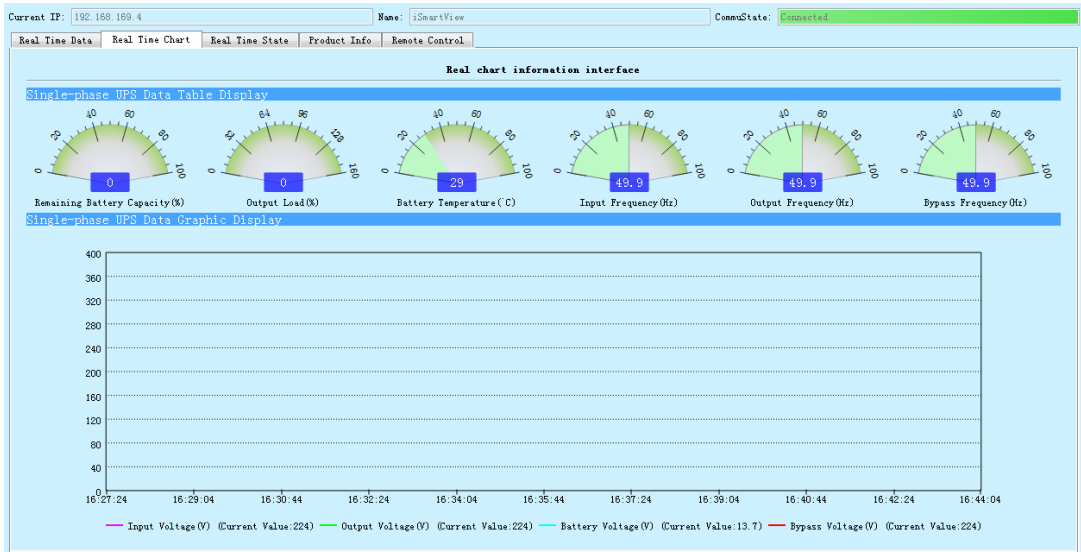
6.2 Real-time data interface

Display real-time data when the device is running, including battery information, input information, output information, bypass information.



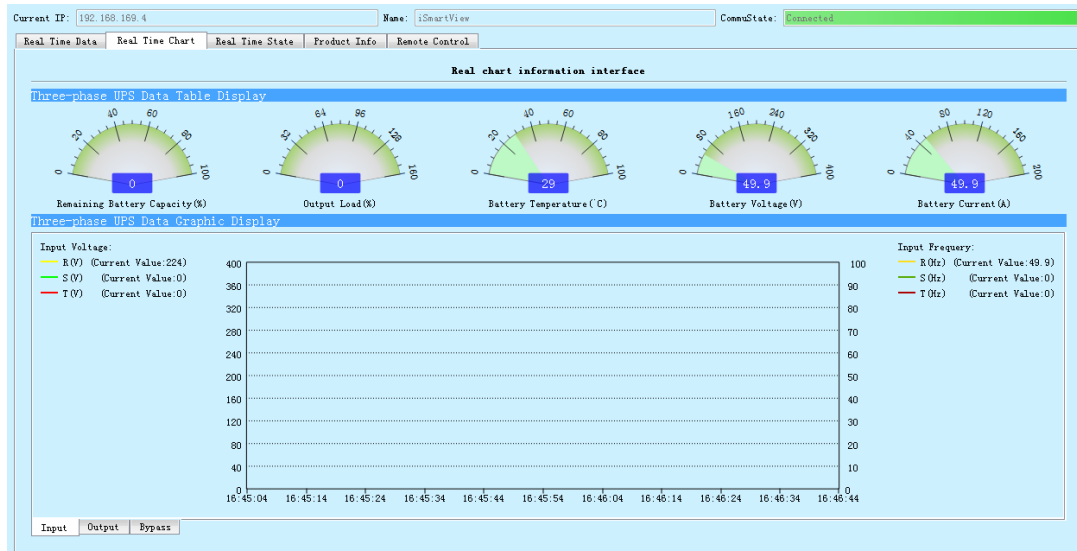
6.3 Real-time chart interface

Display real-time chart when the device is running, including single phase and three phase display interfaces, the system displays different interfaces according to phases.



Single phase display interface including residual capacity of the battery, load

percentage, battery temperature, input and output frequency and chart information of bypass frequency, as well as input and output voltage, battery voltage and dynamic curve chart of bypass voltage.



Three phase display interface including residual capacity of the battery, load percentage, battery temperature, input and output frequency and chart information of bypass frequency, as well as input and output voltage, battery voltage and dynamic curve chart of bypass voltage.

6.4 Real-time status interface

Display real-time status, including UPS information, battery information, input/output information and other information when the device is running.

Real-time event interface		
Event Info		
UPS Info	Communications between the agent and the UPS fault	No
	Temperature overrun MAX-value	No
	UPS off	No
	UPS fault	No
	The UPS will turn off power to the load	No
	A test is in progress	No
	UPS output off	No
	UPS is awaiting the return of input power	No
	A upsShutdownAfterDelay countdown is underway	No
	Last diagnostic test failed	No
Battery Info	Battery fault	No
	Battery operation	No
	Battery low	No
Input/output Info	Battery EOD	No
	Input fault	No
	Output fault	No
	Load overrun MAX-value	No

6.5 Product information interface

Product information interface mainly displays rated information of UPS.

Rated information interface	
UPS info	
UPS Model	EA-3058
Manufacturer Name	EAST CO., LTD.
System Name	i0bk
UPS Ident Attached Devices	
UPS Software Version	V6.8
Agent Software Version	iStarx_SWV4.00
Agent Location	
Rate info	
Rated Apparent Power (VA)	0
Rated Active Power (W)	0
Rated Input Voltage (V)	230
Rated Input Frequency (Hz)	50.0
Rated Output Voltage (V)	220
Rated Output Frequency (Hz)	50.0
Rated Battery-Powered Time (min)	0
Other info	
Buzzer State	OFF
Undervoltage Point (V)	0
Overvoltage Point (V)	0

6.6 Remote control interface

Remote setup interface mainly controls self-test function of UPS, power off setup function, and set self-test period function of UPS.

