



SNR-S2950-24G Fast Ethernet Intelligent Access Switch Datasheet

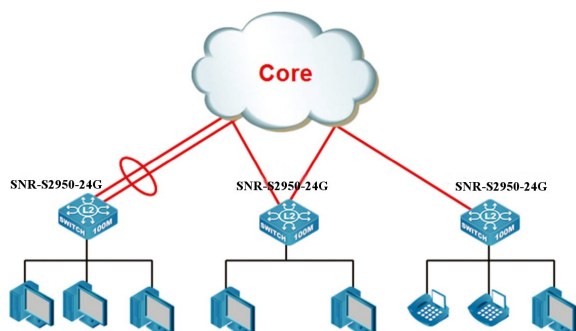
SNR-S2950-24G



Product Overview

SNR-S2950-24G switch is Fast Ethernet intelligent access switch for MAN, campus or enterprise networks. It supports comprehensive QoS, classified bandwidth control, multi link aggregation, intelligent security control, which fulfill the network requirements for access layer of education, government and large/medium enterprise network.

Application



Key Features and Benefits

► High Adaptability VLAN Features

SNR-S2950-24G support 802.1q and port based VLAN. With GVRP supported, SNR-S2950-24G could transmits VLAN attributes to the whole layer 2 network, so the same VLAN of two unadjacent switches can communicate mutually through GVRP protocol instead of configuring each intermediate switch manually for achieving the purpose of simplifying VLAN configuration.

► High Reliability

SNR-S2950-24G support VCT(Virtual Cable Tester), help to locate the error places in the link, make it fast to solve relative problems for network management

SNR-S2950-24G support STP, RSTP, MSTP based on 802.1D, 802.1W, 802.1S, to avoid loop link and configure abundant backup link in network. 802.3ad port aggregation supported, to add link bandwidth and abundant connection between equipments

► Enhanced Security

IEEE 802.1X port-based access control ensures all users are authorized before being granted access to the network. User authentication is carried out using any standard-based RADIUS server.

Access Control Lists (ACLs) can be used to restrict access to sensitive network resources by denying packets and forward by different policies.

The SNR-S2950-24G support DHCP snooping, which prevents DHCP attacks and illegal DHCP server by setting trust ports and untrust ports. With DHCP Snooping binding enabled, it can combine modules like dot1x and ARP, or implement user-access-control independently

The SNR-S2950-24G product support much more L2 security features such as ARP guard, Anti-ARP scanning, and other ARP and MAC security technology to protect network security and reliability.

► Comprehensive QoS

SNR-S2950-24G differentiates and classifies traffic flows according to ports, 802.1p, ToS, DSCP. The dispatcher WRR/SP/SWRR supported by SNR-S2950-24G ensures voice/data/video are properly classified and prioritized throughout the network.

► Monitor and Management

SNR-S2950-24G supports Simple Network Management Protocol (SNMP), in-band and out-of-band. Supports Command Line Interface(CLI) and WEB, supports Security IP function to prevent illegal users log in or change the configuration.

As an important feature, OAM can help the user to monitor and manage the network across different protocols and equipments.

SNR-S2950-24G support 1:1 or N:1 port mirroring, monitor and manage the data flow of network, help locate the problem when breakdown happens

SNR-S2950-24G supports Secure Shell(SSH), which will ensure the security of switch management and configuration. This series of switch can be managed by general network management platform with 3rd management software.

► Abundant IPv6 Support

The SNR-S2950-24G switch support IPv6 in hardware for maximum performance. As more network devices growing and the need for larger addressing and higher security become critical, the SNR-S2950-24G switch will be a right product to meet the requirement. The SNR-S2950-24G passed IPv6 form Phase II certificate is the best proof of the application.

The SNR-S2950-24G switch also support DHCPv6, based on IPv6, including DHCPv6 server, client, relay and snooping, etc.

The SNR-S2950G series supports IPv6 routing in hardware for maximum performance. As more network devices growing and the need for larger addressing and higher security become critical, the SNR-S2950G series will be a right product to meet the requirement. The SNR-S2950G passed IPv6 form Phase II certificate is the best proof of the application.

Specification

Item		SNR-S2950-24G
Ports		24*10/100Base-TX + 2*Gigabits Combo(SFP/GT)
Performance		
Switching Capability		8.8Gbps
Forwarding Rate		6.6Mpps
MAC Address		8K
VLAN Table		4K
ACL TABLE		512
Port Queues		4
Physical		
Dimension(WHD)		443mm x 44mm x 230mm
Relative Humidity		5% ~ 95%, non-condensing
Power Input		AC: 100V~240V
Operating Temperature		0°C ~ 50°C
Storage Temperature		-40°C ~ 70°C
Power Consumption		≤20W
MTBF		>80,000 hours
EMC safety		FCC, CE, RoHS,
Features		
Forwarding Mode		Storage and Forwarding
L1, L2 Features	VLAN Type	802.1Q Based VLAN and support up to 4K VLAN id Port Based VLAN Support GVRP
	Spanning Tree	802.1D STP, 802.1W RSTP, 802.1S MSTP Support Root Guard, BPDU Guard, BPDU Forwarding
	Link Aggregation	Support LACP 802.3ad, max 14 groups trunk with max 8 ports for each trunk, Support Source / Destination MAC/IP based load balance
	MAC Operation	Support MAC Binding Support MAC Filter Support MAC Limit per port
	Storm Control	Support Broadcast / Multicast / Unicast Storm Control Supports control and can set rate or packet number for broadcast / multicast / unicast
	Port	Support VCT GE combo ports could be compatible with FE SFP module Support 1:1 and N:1 port mirror Jumbo Frame 2048 Bytes Loopback Interface Port Loop Detection Bandwidth Control: At least 64Kbps step Support HOL preventing first packet jam, semi-duplex backpressure, duplex IEEE802.3x Port Protection
QoS Features		Traffic Classification Based on IEEE 802.1p CoS, DSCP, ToS Supports SP, WRR, SWRR for scheduling
Security	IEEE 802.1x	Port, MAC Based Authentication Support Guest VLAN and Auto VLAN Work with private client can manage P2P traffic
	AAA	RADIUS for IPv4 and IPv6
	ACL	Support Access Control List(ACL) based on source/destination IP address, source/destination MAC address, IP type, TCP/UDP port number, IP precedence, time range, ToS. ACL on VLAN interface
	Enhanced	IP Source Guard support L3 Forwarding Block Support DHCP Snooping
Multicast		Support IGMP v1/v2/v3 Snooping IGMP Fast Leave Support Multicast Policy Configuration

Item	SNR-S2950-24G
IPv6	ICMPv6, NDP, SNMP over IPv6, HTTP over IPv6, IPv6Ping/Tracer, IPv6Telnet, IPv6RADIUS+, IPv6Syslog, IPv6 SNTP, IPv6 FTP/TFTP
	Support DHCPv6 Server, Relay, Snooping
	Support IPv6 MVR
Switch Management	CLI, WEB, Telnet, SNMPv1/v2c/v3 through IPv4 and IPv6 RMON 1,2,3,9 Support Public & Private MIB interface Supports SNTP, Summer Saving Time Support multiple Syslog servers Support OAM 802.3ah Support Cluster Supports IPv4 and IPv6 Security IP Supports BOOTP, DHCP server/client for IP address assignment
Firmware & Configuration	Multiple Configuration Files Firmware Upgrade via TFTP/FTP server Configuration file upload/download via TFTP/FTP server

Ordering Information

Product	Description
SNR-S2950-24G	24*10/100M ports + 2 Gigabit Combo (SFP/GT) ports.

Contact us:

URL: <http://www.shop.nag.ru>

Email sales@nag.ru

Ekaterinburg, Russia

Building 57/2, Predelnaya st

tel/fax: +7 (343) 379-98-38