
SNMP_Protector Operation Manual

Contents

1. Software introduction	1
1.1. General introduction	1
1.2. Language setting	2
1.3. Add Host	3
1.4. Equipment modification	4
1.5. Host delete	5
1.6. Shutdown condition setting	6
1.7. Events Log query	7
1.8. Events Log export	8
2. Version information	9

1. Software introduction

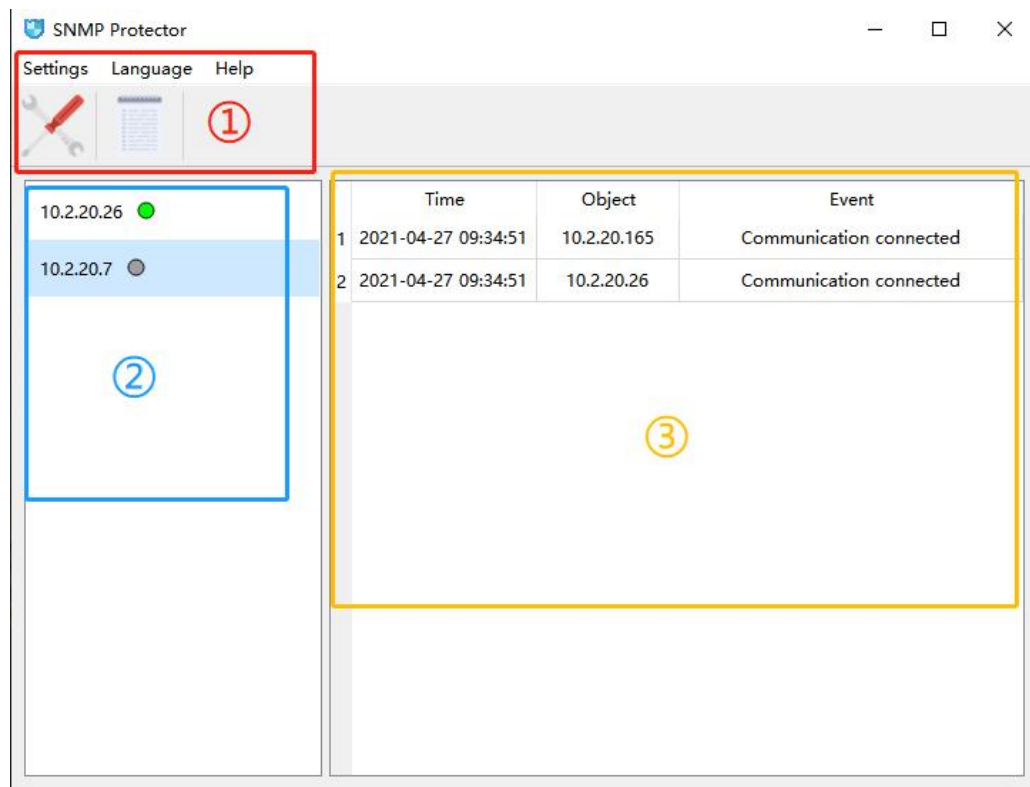
SNMP_Protector is the software be used for UPS,SNMP to remote shutdown protection,when UPS occurs “Mains input ,Battery low voltage,UPS shutdown abnormal” ,SNMP_Protector would be activited to sent out shutdown command to server & PC to switch OFF them.

Function introduction

1.1. General introduction

Software interface is composed of the following items:

- ①Menu,
- ②Device list,
- ③Dlarm information list;showing as below:

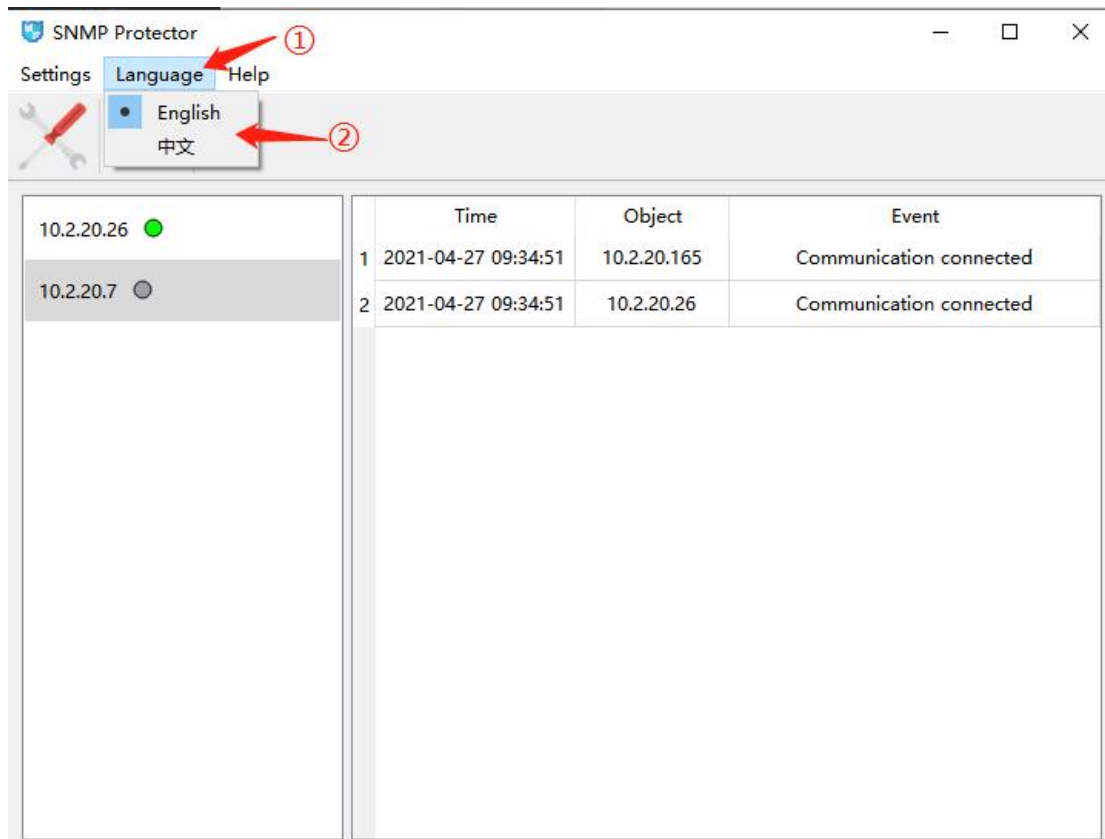


1.2. Language setting

The default language setting is English,

①Please press the **【Language】** button,

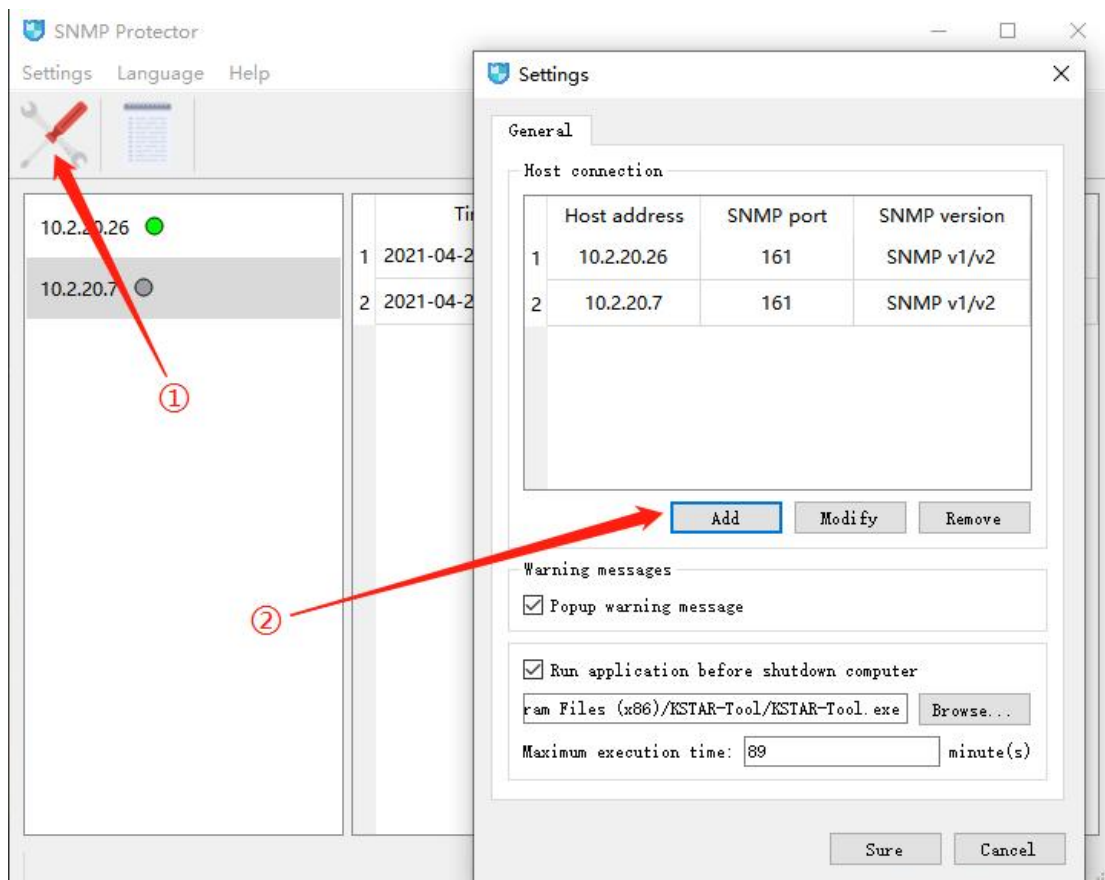
②Select the language as English or Chinese accordingly.

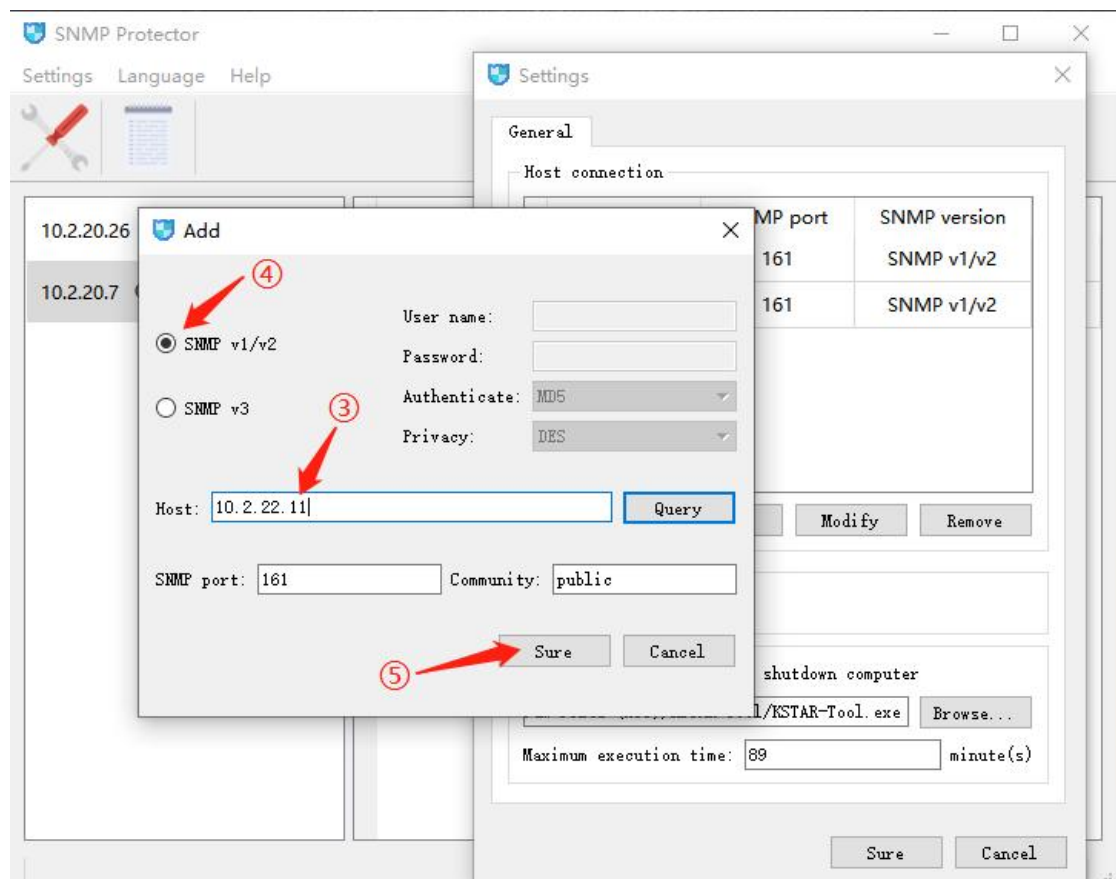


1.3. Add Host

- ① Click the setting icon,
- ② Click **【Add】** button,
- ③ Select SNMP v1/v2 (Default value is SNMP v1/v2,
- ④ Fill out the Host (SNMP card) IP address,
- ⑤ Click **【Sure】** button to finish the addition.

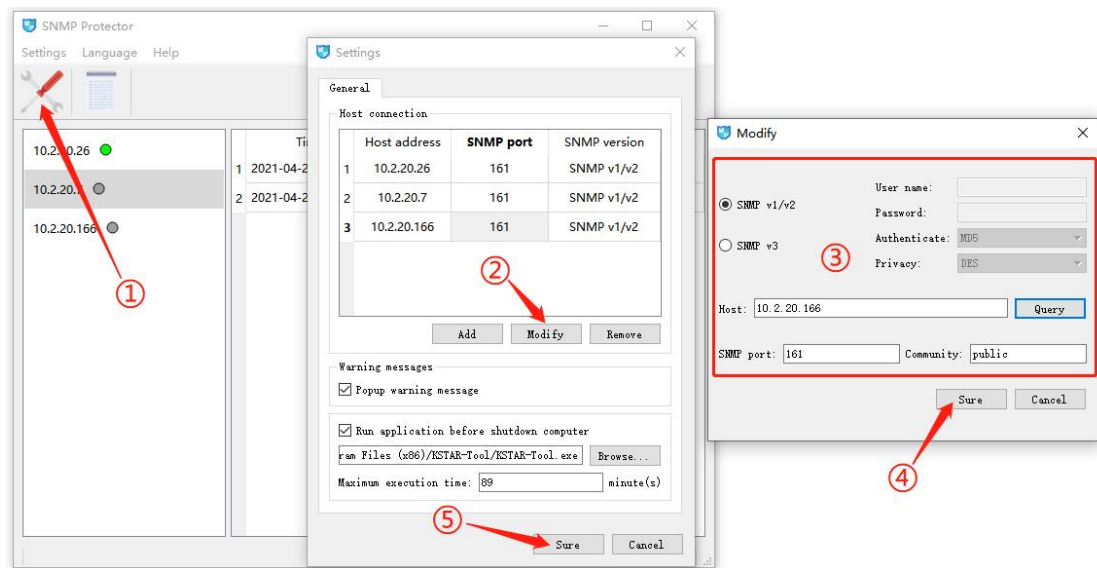
Note: Since the shutdown protection function is implemented by receiving trap alarm messages, the computer that needs the shutdown protection function should run the shutdown protection software continuously. In addition, on the SNMP card page, set the IP address of the computer that needs to be shut down. Set the path as: Parameter Settings --SNMP--Trap. Enter the IP address of the computer that needs to be shut down in the IP field, and set the version as SNMPv2 Trap.





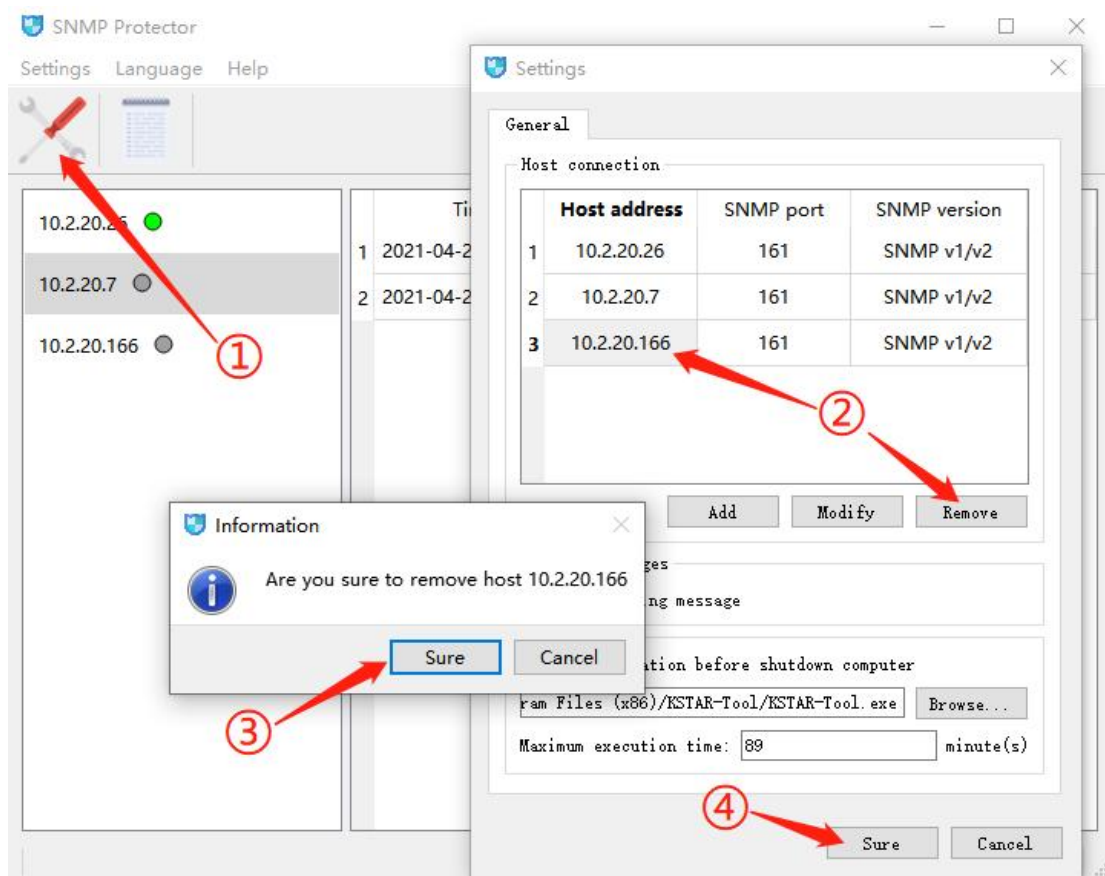
1.4. Equipment modification

- ① Click the setting icon,
- ② Selected the modify Host, Click **【Modify】** item,
- ③ Updated the Host information in the popup interface, such as SNMP Trap type, IP, SNM port, community character string etc,
- ④ Click **【Sure】** button,
- ⑤ Click **【Sure】** button to close and finish the modification.



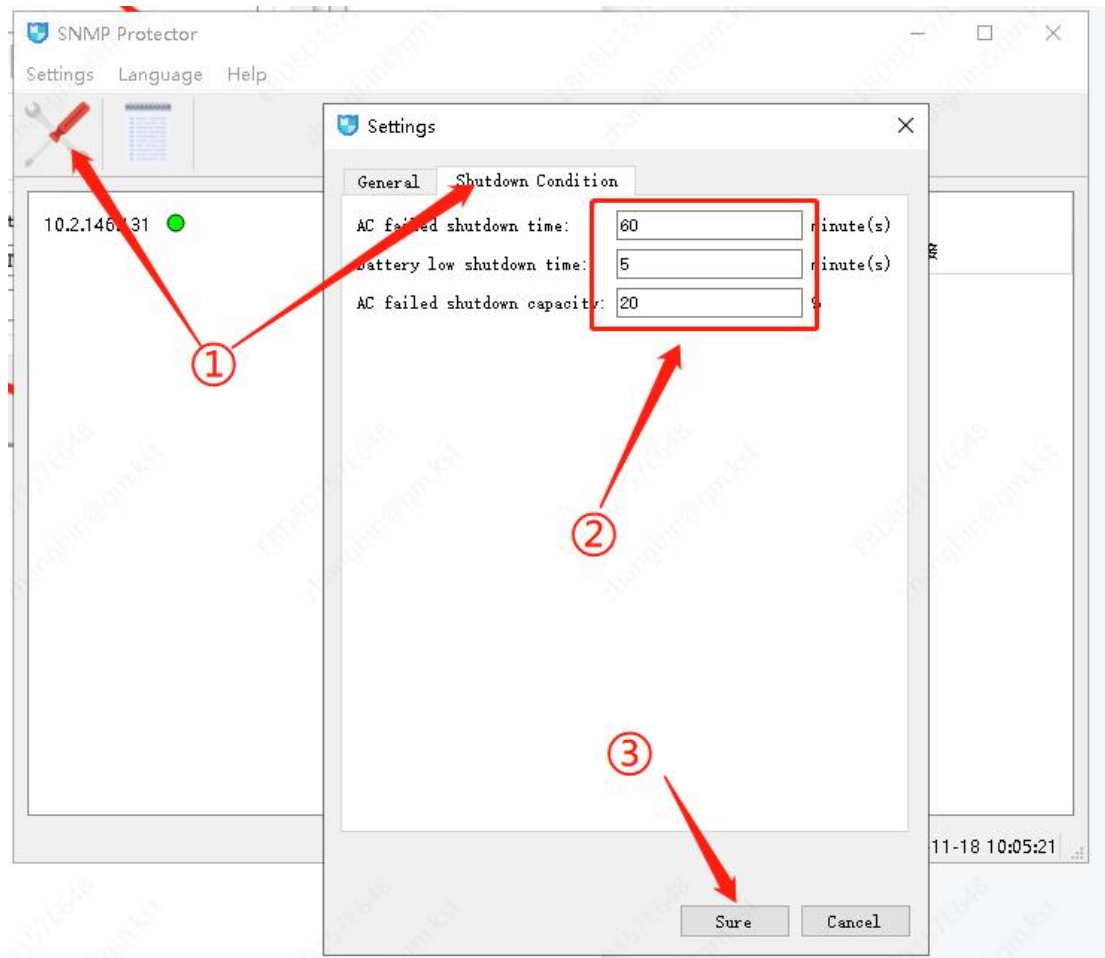
1.5. Host delete

- ① Click the setting icon,
- ② Selected the modify Host, Click **Remove** item,
- ③ Deleted Host information in the popup interface and Click **Sure** button,
- ④ Click **Sure** button to close and finish the delete operation.



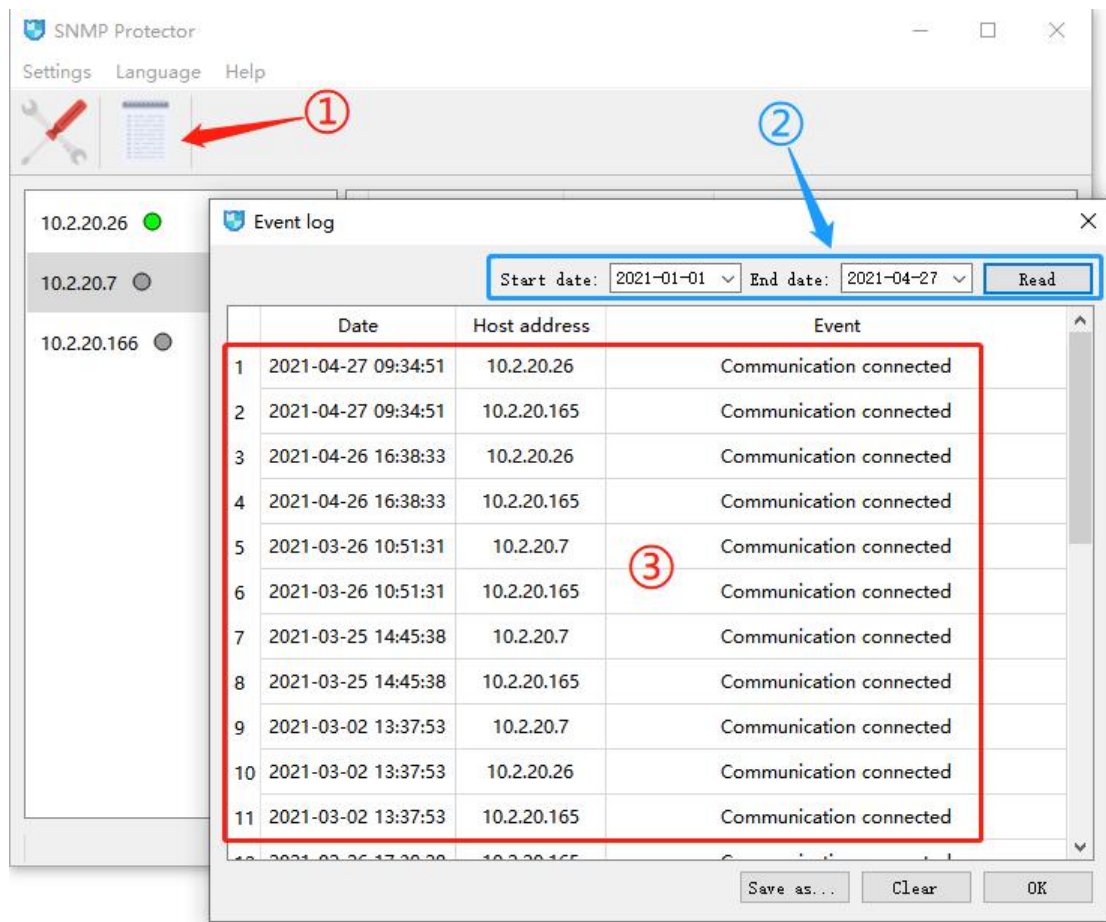
1.6. Shutdown condition setting

- ① Click the setting icon -- Shutdown conditions;
- ② Set shutdown conditions:
 - a. "Abnormal Shutdown Time of Main Road" refers to the number of minutes after the mains interruption occurs to shut down the computer/server;
 - b. Battery Low Shutdown Time indicates the number of minutes after the ups battery low alarm is generated.
 - c. Power Off Capacity indicates that when the battery capacity is lower than a certain percentage in the mains interruption state, shut down the PC or server immediately.
- ③ Click "sure" to close the setting box to complete the setting of shutdown conditions.



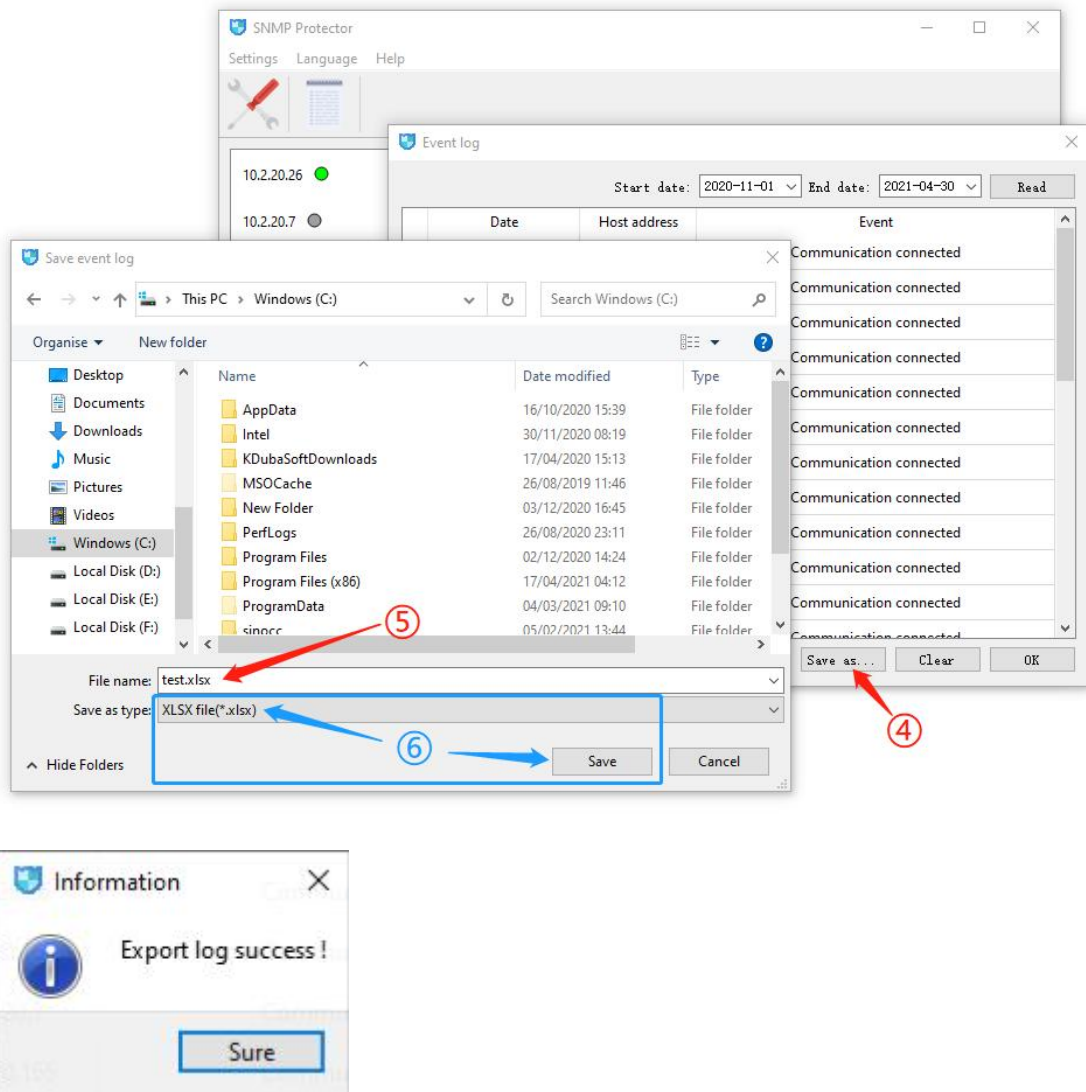
1.7. Events Log query

- ⑤ Click the Log icon,
- ⑥ Selected the inquiry data, press **【Read】** button,
- ⑦ Showing the search result.



1.8. Events Log export

- ① Click the **【Save As】** button to record the events and configuration,
- ② Click the **【Read】** button and choice the recorded type,
- ③ It would be showing“ Export Log success”,



2. Version information

Click **【Help】** item→ **【About】** item,it would show the software version.

