

DY807 (Discontinued) & DA807 & DZ807 Comparisons

Hardware Specifications	DY807 (Discontinued)	DA807	DZ807
Appearance	As shown in figure 1	As shown in figure 2	As shown in figure 3
CPU	ARM 266MHz 32bit	ARM Cortex-A8 32bit	ARM 300MHz 32bit
System Clock	208MHz	600MHz	300MHz
Flash	8M	128M	
SDRAM	32M	128M	
LAN Interface	10M/100M UTP	10M/100M/1000M UTP	10M/100M UTP
Ethernet Throughput	1620KB per seconds	3MB per seconds	1620KB per seconds
Ethernet Latency	0.759 milliseconds	0.2 milliseconds	0.759 milliseconds

Size Specifications	71.2mm(L) × 68.4mm(W) × 43.1mm(H)
----------------------------	-----------------------------------

Firmware Specifications	DY807 (Discontinued)	DA807	DZ807
Version	3.8.DY806.2	3.10.DA806	3.10.DZ806
Web UI	As shown in figure 4	As shown in figure 5	As shown in figure 6
UPS Status Display	Clear meter and chart display, no need to install any plug-ins. As shown in figure 7	Intuitive <u>graphical display</u> with detailed <u>text display</u> , no need to install any plug-ins. As shown in figure 8	
Logs the login connection status	No	It can record the connection status of four login methods: <u>HTTP/HTTPS</u> , <u>TELNET/SSH</u> , <u>FTP/FTPS</u> and <u>Modbus</u> . As shown in figure 9	
Built-in UPS protocol	14 UPS protocols in total	Excluding the dry contact protocol (Contact Closure), a total of 13 protocols are available.	
UPS event logging time interval	The minimum interval is <u>1 minute</u> .	<u>No time interval recording</u> can be set (Depends on UPS command polling time interval).	The minimum interval is <u>1 minute</u> .

Remote Shutdown (PC)	No	It can be set to shut down 8 remote computers after a specified event occurs in the UPS, and the shutdown command can be customized. <i>As shown in figure 10</i>	
Network settings	Support 10/100Mbps full-duplex/half-duplex.	Support 10/100Mbps full-duplex/half-duplex and 1000Mbps full-duplex/half-duplex.	Support 10/100Mbps full-duplex/half-duplex.
Wireless network settings	No	Support inserting USB wireless network card to connect to wireless network. <i>As shown in figure 11</i>	
SNMP settings	SNMP v3: Authentication protocol supports MD5 and SHA; Privacy protocol supports DES and AES.	SNMP v3: Authentication protocol supports MD5, SHA, SHA224/SHA256/SHA384/SHA512; Privacy protocol supports DES, AES-128/AES-192/AES-256.	
SMS settings	Support remote SMS server to send SMS.	Support access to <u>local Modem</u> (<i>As shown in figure 12</i>) or remote SMS server to send SMS.	
WeChat settings	No	It can be set to send UPS and NetFeeler warning messages through WeCom (WeChat Work). <i>As shown in figure 13</i>	

LINE settings	No	It can be set to send UPS and NetFeeler warning messages through LINE. <i>As shown in figure 14</i>	
Telegram settings	No	It can be set to send UPS and NetFeeler warning messages through Telegram. <i>As shown in figure 15</i>	
Skype settings	No	It can be set to send UPS and NetFeeler warning messages through Skype. <i>As shown in figure 16</i>	
Web/Telnet/FTP	Use the same username and password for HTTP, FTP and Telnet; Support HTTPS, support protocols SSL v2/v3, TLS v1.0/v1.1/v1.2.	Support HTTP, Telnet, FTP to <u>enable or disable functions</u> and port settings; support 3 ways to access using <u>separate username and password</u> ; Support HTTPS, support protocols SSL v2/v3, TLS v1.0/v1.1/v1.2/ <u>v1.3</u> .	
BACnet	No	Support to obtain UPS data through BACnet. <i>As shown in figure 17</i>	No
SysLog settings	No	Support SysLog	
Save Configuration	Save current settings and load settings	The current settings can be saved, optionally <u>encrypted</u> or <u>unencrypted</u> ; and the settings can also be loaded.	

Event Log	Display events in list mode. As shown in figure 18	Graphics combined with a more vivid display of events in <u>monthly</u> units (no need to install plugin support). As shown in figure 19	
Data Log	Display data in list mode. As shown in figure 20	Graphs combine to display data more vividly in units of <u>days</u> (no need to install plugin support) As shown in figure 21	
Search NetAgent	The list shows NetAgent in the current LAN, click the list to open the web management interface. As shown in figure 22	The list shows the NetAgent in the current LAN, which can be <u>set related network settings</u> and open the web management interface. As shown in figure 23	No
File Management	No	Visual display of current log files, which can be deleted or backed up. As shown in figure 24	
Firmware Upgrade	Can be set to upgrade manually or automatically via FTP	Can be set to upgrade manually or automatically via FTP; <u>The firmware can be upgraded directly through this webpage.</u> As shown in figure 25	

Note: Other functions that are not mentioned are the same, but the order of the page positions may be different.

Additional Image:



Figure 1

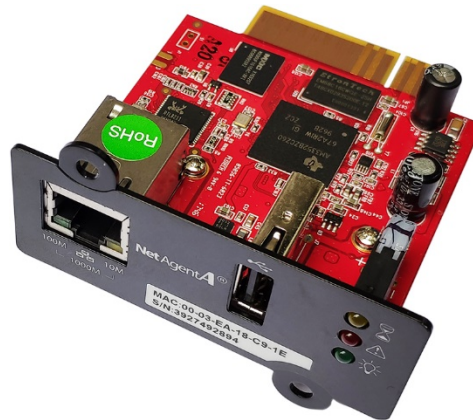


Figure 2



Figure 3

NetAgent IX

Information

- System Status +
- Basic Information
- Current Status
- Remote Control
- Meter/Chart
- NetFeeler

Configuration

Log Information

Help

Information > System Status

System Information | Network Status

Hardware Version	HDY807	UPS Last Self Test	--
Firmware Version	3.8.DY806.2	UPS Next Self Test	--
Serial Number	3927163017	UPS Critical Load	80 %
System Name	UPS Agent	UPS Critical Temperature	70.0 °C
System Contact	Administrator	UPS Critical Capacity	10 %
Location	My Office		
System Time	2022/07/22 10:20:53		
Uptime	1 day(s) 00:32:46		

Warning will be initiated 10 minute(s) before Scheduled Shutdown Event


Send Email for Daily Report (No)

[Help](#)

Latest Events

- [10:59:28] UPS communication has been lost.
- [10:50:25] UPS communication has been established.
- [10:41:11] UPS communication has been lost.

Figure 4



NetAgentA

Latest Events
 [02:02:09] Connection with time server failed.
 [18:00:45] Connection with time server failed.
 [14:00:04] Connection with time server failed.

Information

- UPS Status
- System Status
- Remote Control
- SMS Modem Status
- NetFeeler
- Configuration**
- Log Information
- Management

System Information | UPS Information | Network Status | Connections Status

System Information			
Hardware Version	HDA807	UPS Last Self Test	--
Firmware Version	3.10.DA806	UPS Next Self Test	--
Serial Number	3925868557	UPS Critical Load	80 %
System Name	UPS Agent	UPS Critical Temperature	70.0 °C(158.0 °F)
System Contact	Administrator	UPS Critical Capacity	10 %
Location	My Office		
System Time	2022/07/22 10:24:37		
Uptime	1 day(s) 00:58:06		
Warning will be initiated 10 minute(s) before Scheduled Shutdown Event			
Send Email for Daily Report (No)			

Figure 5

NetAgent 9

Latest Events
 [14:01:19] Connection with time server failed.
 [10:59:01] UPS communication has been established.
 [10:50:55] UPS communication has been lost.

Information

- UPS Status
- System Status
- Remote Control
- SMS Modem Status
- NetFeeler
- Configuration**
- Log Information
- Management

System Information | UPS Information | Network Status | Connections Status | Wireless Status

System Information			
Hardware Version	HDZ807	UPS Last Self Test	--
Firmware Version	3.10.DZ806	UPS Next Self Test	--
Serial Number	3927482409	UPS Critical Load	80 %
System Name	UPS Agent	UPS Critical Temperature	70.0 °C(158.0 °F)
System Contact	Administrator	UPS Critical Capacity	10 %
Location	My Office		
System Time	2022/07/22 10:25:28		
Uptime	1 day(s) 00:58:37		
Warning will be initiated 10 minute(s) before Scheduled Shutdown Event			
Send Email for Daily Report (No)			

Figure 6

NetAgent IX

Latest Events

[10:59:28] UPS communication has been lost.
 [10:50:25] UPS communication has been established.
 [10:41:11] UPS communication has been lost.

Information

- System Status
- Basic Information
- Current Status**
- Remote Control
- Meter/Chart
- NetFeeler

Configuration

Log Information

Information > Current Status

Input Status
Output Status
Battery Status

AC Status	Normal
Input Line Voltage	220.1 V
Input Max. Line Voltage	220.1 V
Input Min. Line Voltage	220.1 V
Input Frequency	50.0 Hz

NetAgent IX

Latest Events

[10:30:22] UPS communication has been established.
 [10:59:28] UPS communication has been lost.
 [10:50:25] UPS communication has been established.

Information

- System Status
- Basic Information
- Current Status
- Remote Control
- Meter/Chart
- NetFeeler

Configuration

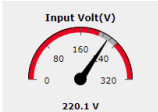
Log Information

Help

Information > Meter/Chart

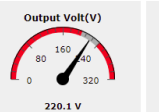
Single-Phase UPS Data Code Table
Single-Phase UPS Data Graphics

Input Volt(V)



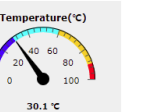
220.1 V

Output Volt(V)



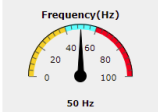
220.1 V

Temperature(°C)



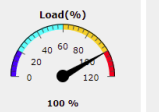
30.1 °C

Frequency(Hz)



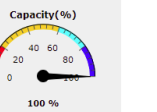
50 Hz

Load(%)



100 %

Capacity(%)

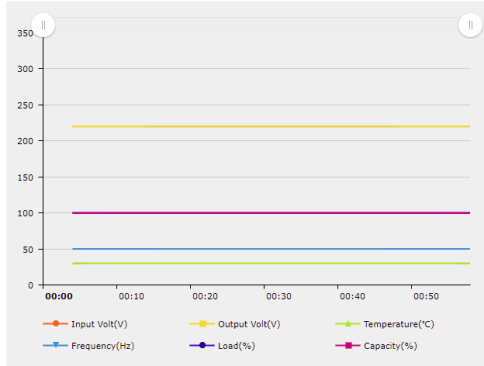


100 %

Help

Information > Meter/Chart

Single-Phase UPS Data Code Table
Single-Phase UPS Data Graphics



Help

Figure 7

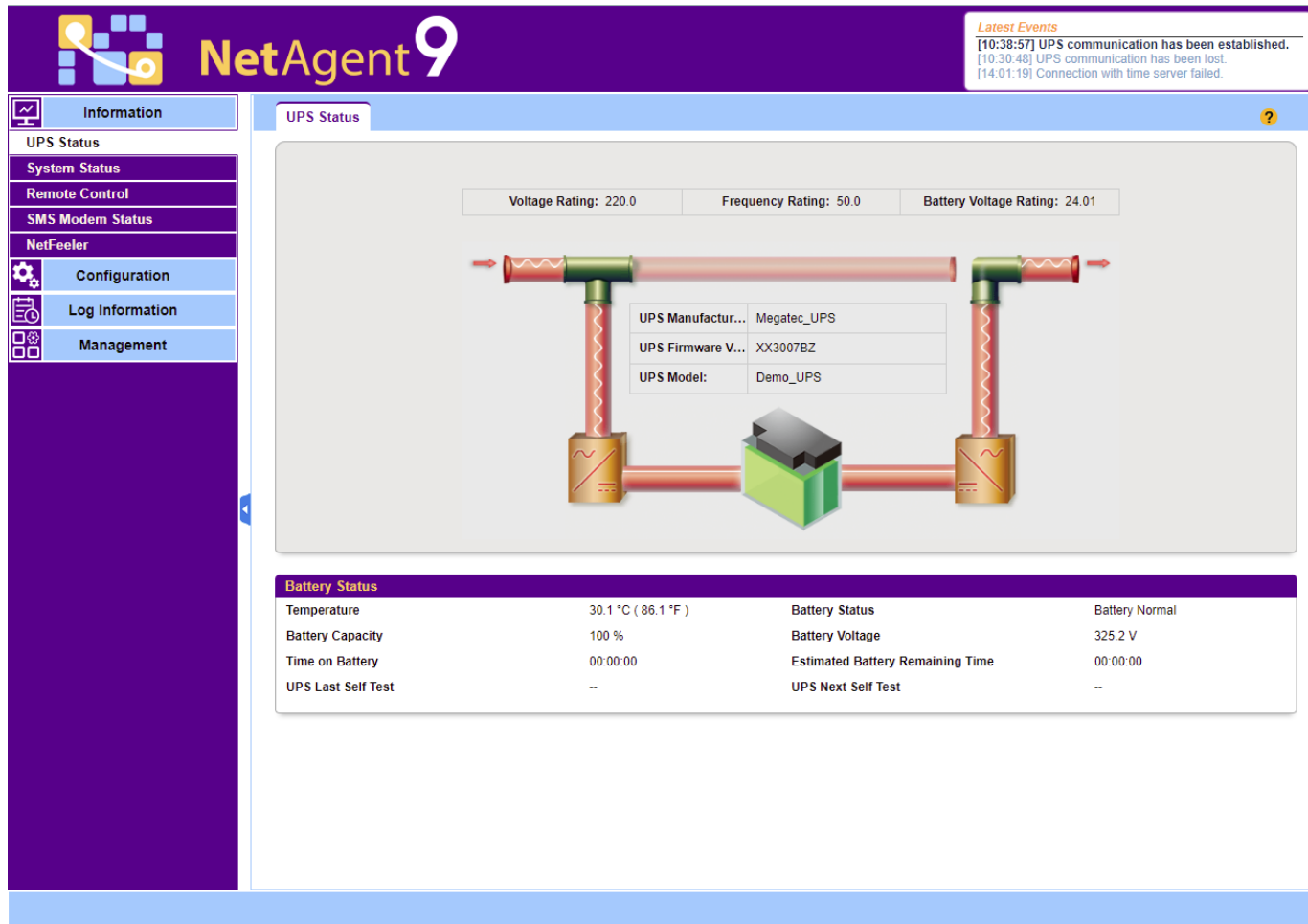


Figure 8

NetAgent 9

Latest Events
 [10:38:57] UPS communication has been established.
 [10:30:48] UPS communication has been lost.
 [14:01:19] Connection with time server failed.

Information

- UPS Status
- System Status
- Remote Control
- SMS Modem Status
- NetFeeler
- Configuration
- Log Information
- Management

System Information | **UPS Information** | **Network Status** | **Connections Status** | **Wireless Status**

HTTP/HTTPS

- [2022/07/22 10:25:28] ::ffff:192.168.3.100 login
- [2022/07/22 10:22:52] ::ffff:192.168.3.100 logout
- [2022/07/22 10:21:27] ::ffff:192.168.3.100 login
- [2022/07/22 10:17:39] ::ffff:192.168.3.100 logout
- [2022/07/22 10:16:18] ::ffff:192.168.3.100 login
- [2022/07/22 09:17:46] ::ffff:192.168.3.100 logout
- [2022/07/22 09:16:05] ::ffff:192.168.3.100 login
- [2022/07/22 08:12:41] ::ffff:192.168.3.100 logout
- [2022/07/22 08:11:12] ::ffff:192.168.3.100 login
- [2022/07/22 07:07:43] ::ffff:192.168.3.100 logout

TELNET/SSH

- [2022/07/21 11:07:22] ::ffff:192.168.3.100 logout
- [2022/07/21 11:05:47] ::ffff:192.168.3.100 login

FTP/FTPS

- [2022/07/21 11:07:54] 192.168.3.100 logout
- [2022/07/21 11:07:42] 192.168.3.100 login

Modbus

- [2022/07/21 11:09:28] ::ffff:192.168.3.100 logout
- [2022/07/21 11:08:59] ::ffff:192.168.3.100 login

SNMP

- [2022/07/21 11:09:56] UDP: [192.168.3.100]:63585 GetNext .1.3.6.1.6.3.16.1.5.2.1.5.6.95.110.111.110.101.95.1.1
- [2022/07/21 11:09:56] UDP: [192.168.3.100]:63585 GetNext .1.3.6.1.6.3.16.1.5.2.1.5.6.95.110.111.110.101.95.1.2
- [2022/07/21 11:09:56] UDP: [192.168.3.100]:63585 GetNext .1.3.6.1.6.3.16.1.5.2.1.6.3.97.108.108.1.1
- [2022/07/21 11:09:56] UDP: [192.168.3.100]:63585 GetNext .1.3.6.1.6.3.16.1.5.2.1.6.5.95.97.108.108.95.1.0
- [2022/07/21 11:09:56] UDP: [192.168.3.100]:63585 GetNext .1.3.6.1.6.3.16.1.5.2.1.6.5.95.97.108.108.95.1.1
- [2022/07/21 11:09:56] UDP: [192.168.3.100]:63585 GetNext .1.3.6.1.6.3.16.1.5.2.1.6.5.95.97.108.108.95.1.2
- [2022/07/21 11:09:56] UDP: [192.168.3.100]:63585 GetNext .1.3.6.1.6.3.16.1.5.2.1.6.6.95.110.111.110.101.95.1.0
- [2022/07/21 11:09:56] UDP: [192.168.3.100]:63585 GetNext .1.3.6.1.6.3.16.1.5.2.1.6.6.95.110.111.110.101.95.1.1
- [2022/07/21 11:09:56] UDP: [192.168.3.100]:63585 GetNext .1.3.6.1.6.3.16.1.5.2.1.6.6.95.110.111.110.101.95.1.2
- [2022/07/21 11:09:56] UDP: [192.168.3.100]:63585 GetNext .1.3.6.1.6.3.16.1.4.1.4.7.86.51.82.87.71.114.112.0.3.1

Figure 9

NetAgent 9

Latest Events
 [10:38:57] UPS communication has been established.
 [10:30:48] UPS communication has been lost.
 [14:01:19] Connection with time server failed.

Information
 Configuration
 UPS Configuration
 UPS On/Off Schedule
 Network
 Wireless LAN
 SNMP
 + Notification
 Web/Telnet/FTP
 NetFeeler
 System
 Log Information
 Management

UPS Action | **Remote Shutdown** | Weekly Schedule | Date Schedule | Wake On Lan

	Domain Name / IP	Login Mode	Port	User Name	Password	Shutdown Commands	
Host1	192.168.5.46	SSH	22	Tim	*****	halt	Test
Host2		SSH	22			halt	Test
Host3		SSH	22			halt	Test
Host4		SSH	22			halt	Test
Host5		SSH	22			halt	Test
Host6		SSH	22			halt	Test
Host7		SSH	22			halt	Test
Host8		SSH	22			halt	Test

Apply Reset

Figure 10

NetAgent 9

Latest Events
 [10:38:57] UPS communication has been established.
 [10:30:48] UPS communication has been lost.
 [14:01:19] Connection with time server failed.

Configuration

- UPS Configuration
- UPS On/Off Schedule
- Network
 - Wireless LAN
 - SNMP
 - + Notification
 - Web/Telnet/FTP
 - NetFeeler
 - System
- Log Information
- Management

AP Setting | IPv4 | IPv6 | P2P

SSID	MAC Address	Network Security	Auth(Enc)	Signal(%)
▶ xia	24:69:68:5e:9a:86	Secure Network	WPA-PSK/WPA2-PSK(AES)	
▶ 168	24:69:68:5e:94:04	Secure Network	WPA-PSK/WPA2-PSK(AES)	
▶ DIRECT-QWLAPTOP-KF2V8BKcMsJL 3c:a0:67:ee:ed:fb		Secure Network	WPA2-PSK(AES)	
▶ TP-LINK_646F	b0:95:8e:c2:64:6f	Secure Network	WPA-PSK/WPA2-PSK(AES)	
▼ Tim_Test	24:69:68:5d:ff:8c	Secure Network	WPA-PSK/WPA2-PSK(AES)	
Password <input type="text"/>		Connect		
▶ MegaTec_GZ	1c:b7:2c:75:31:a8	Secure Network	WPA2-PSK(AES)	
▶ jun	24:69:68:5e:9a:68	Secure Network	WPA-PSK/WPA2-PSK(AES)	
▶ DIRECT-N7-Pantum P2200 Series 86:7a:b6:98:12:3e		Secure Network	WPA2-PSK(AES)	
▶ Unnamed Network	24:69:68:5e:9a:60	Secure Network	WPA-PSK/WPA2-PSK(AES)	
▶ YC2022	54:75:95:a2:d6:86	Secure Network	WPA2-PSK(AES)	
▶ YC2022-BG	06:75:95:a2:da:c0	Secure Network	WPA-PSK/WPA2-PSK(AES)	
▶ ChinaNet-FXUW	fc:37:2b:99:f7:41	Secure Network	WPA-PSK/WPA2-PSK(AES)	
▶ YC2022-BG	06:75:95:a2:db:3e	Secure Network	WPA-PSK/WPA2-PSK(AES)	
▶ YC2022-BG	06:75:95:a2:d6:86	Secure Network	WPA-PSK/WPA2-PSK(AES)	

Figure 11

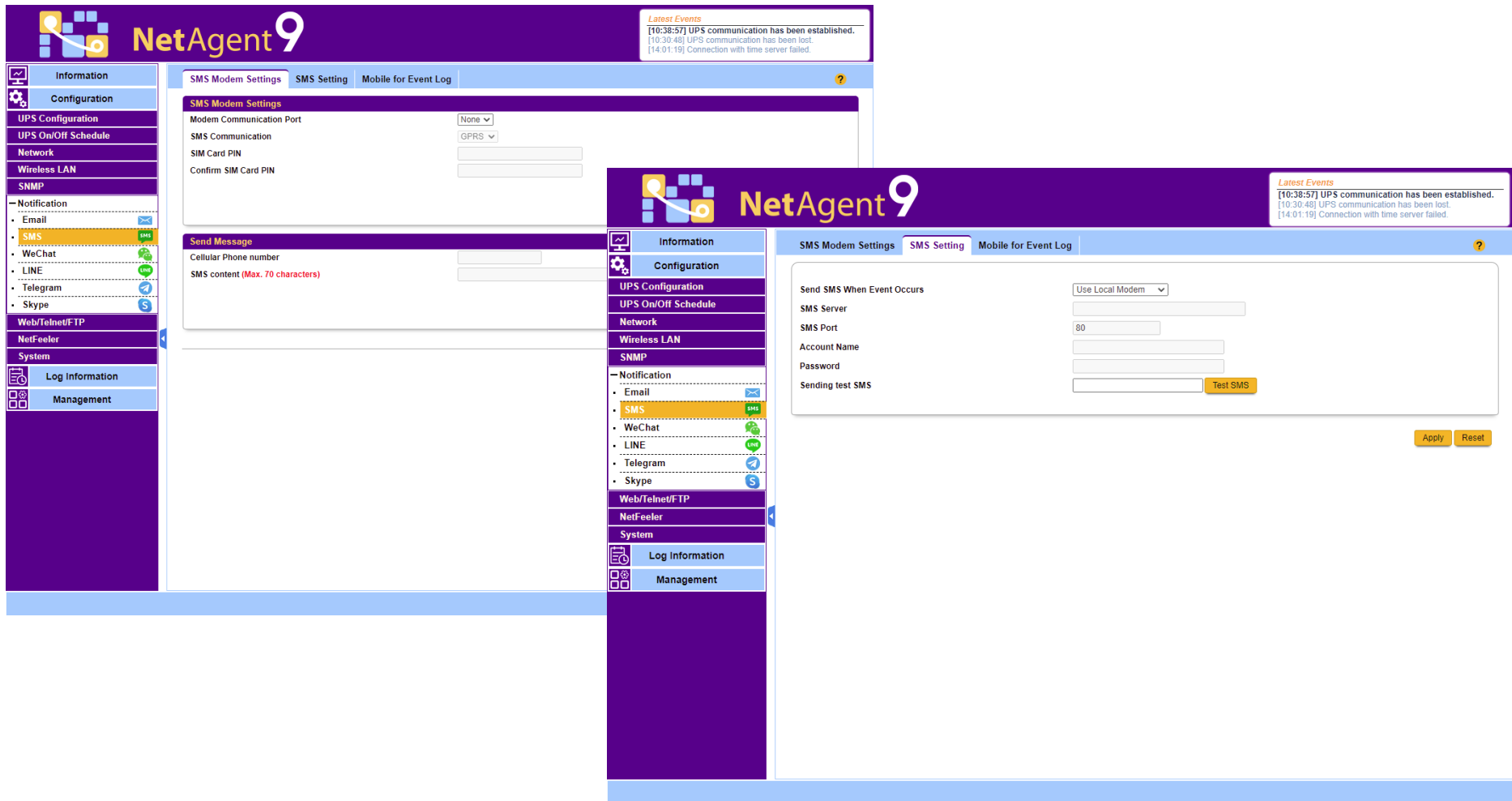


Figure 12

NetAgent 9

Latest Events
 [10:38:57] UPS communication has been established.
 [10:30:48] UPS communication has been lost.
 [14:01:19] Connection with time server failed.

NetAgent WeChat | WeChat for Event Log | **Corporation WeChat Settings** ?

Send Message by Corporation WeChat: No

Corporation ID:

Application Agent ID: 1000002

Application Secret:

Department ID: 1

Department Secret:

Allow User to join Corporation WeChat: No

Corporation QR Code:

Apply Reset

Navigation Sidebar:
 Information
 Configuration
 UPS Configuration
 UPS On/Off Schedule
 Network
 Wireless LAN
 SNMP
 Notification
 • Email
 • SMS
 • **WeChat**
 • LINE
 • Telegram
 • Skype
 Web/Telnet/FTP
 NetFeeler
 System
 Log Information
 Management

Figure 13

NetAgent 9

Latest Events
[10:38:57] UPS communication has been established.
[10:30:48] UPS communication has been lost.
[14:01:19] Connection with time server failed.

Information
Configuration
UPS Configuration
UPS On/Off Schedule
Network
Wireless LAN
SNMP
Notification
• Email
• SMS
• WeChat
• **LINE**
• Telegram
• Skype
Web/Telnet/FTP
NetFeeler
System
Log Information
Management

NetAgent LINE | LINE for Event Log

To use NetAgent LINE to send alarms, please scan the following QR code and add NetAgent into friend list.
You will receive a UserID from NetAgent LINE. Please enter this UserID to receive NetAgent LINE messages.
(You could also send "uid" to NetAgent LINE to receive UserID again)

User ID **Test LINE**

Please scan QR code with LINE to add NetAgent into friend list.

Figure 14

The screenshot displays the NetAgent 9 web interface. At the top left is the NetAgent 9 logo. The top right corner features a 'Latest Events' box with the following text: [10:38:57] UPS communication has been established. [10:30:48] UPS communication has been lost. [14:01:19] Connection with time server failed.

The left sidebar contains a navigation menu with the following items: Information, Configuration, UPS Configuration, UPS On/Off Schedule, Network, Wireless LAN, SNMP, Notification (with sub-items: Email, SMS, WeChat, LINE, Telegram, Skype), Web/Telnet/FTP, NetFeeler, System, Log Information, and Management. The 'Telegram' option is highlighted in orange.

The main content area is titled 'NetAgent Telegram' and 'Telegram for Event Log'. It contains the following text: 'To use NetAgent Telegram to send alarms, please search and add netagent_bot into Telegram Contact list. You could send "chatid" to netagent_bot to receive ChatID. Please enter this ChatID to receive NetAgent Telegram messages.' Below this text is a text input field labeled 'ChatID' and a yellow button labeled 'Test Telegram'.

Figure 15

NetAgent 9

Latest Events
[10:38:57] UPS communication has been established.
[10:30:48] UPS communication has been lost.
[14:01:19] Connection with time server failed.

Information
Configuration
UPS Configuration
UPS On/Off Schedule
Network
Wireless LAN
SNMP
Notification
• Email
• SMS
• WeChat
• LINE
• Telegram
• **Skype**
Web/Telnet/FTP
NetFeeler
System
Log Information
Management

NetAgent Skype Skype for Event Log

To use NetAgent Skype to send alarms, please add Skype Bot to contacts first.
You will receive a UserID from NetAgent Skype. Please enter this UserID to receive NetAgent Skype messages.
(You could also send "uid" to Skype to receive UserID again)


User ID **Test Skype**

Please open the following link with Browser to add NetAgent Bot into Skype contacts list.
<https://join.skype.com/bot/ad3bb4cf-4d7d-481d-b89e-bb64c32782d4>



Add Bot to Contacts

Figure 16



NetAgentA

Latest Events

[02:02:09] Connection with time server failed.
[18:00:45] Connection with time server failed.
[14:00:04] Connection with time server failed.

Information

Configuration

UPS Configuration

UPS On/Off Schedule

Network

Wireless LAN

SNMP

+ Notification

Web/Telnet/FTP

BACnet

NetFeeler

System

Log Information

Management

BACnet
?

BACNet Device

BACNet Device ID * (-1 = Out of service)

BACNet Port (0-65535)

Notification

Destination IP	Accept	Port (0-65535)	Severity	Description
<input type="text"/>	No ▾	<input type="text"/>	Alarm ▾	<input type="text"/>
<input type="text"/>	No ▾	<input type="text"/>	Alarm ▾	<input type="text"/>
<input type="text"/>	No ▾	<input type="text"/>	Alarm ▾	<input type="text"/>
<input type="text"/>	No ▾	<input type="text"/>	Alarm ▾	<input type="text"/>

* : System will reboot when these items have been Applied.

Figure 17

NetAgent IX

Latest Events
 [11:09:27] UPS communication has been lost.
 [11:08:59] Server address can not be resolved.
 [10:30:22] UPS communication has been established.

Log Information > Event Log

Event Log

Date/Time	Event
2022/07/22 11:09:27	UPS communication has been lost.
2022/07/22 11:08:59	Server address can not be resolved.
2022/07/22 10:30:22	UPS communication has been established.
2022/07/21 10:59:28	UPS communication has been lost.
2022/07/21 10:50:25	UPS communication has been established.
2022/07/21 10:41:11	UPS communication has been lost.
2022/07/21 10:34:36	UPS Load Overrun (100%)
2022/07/21 10:34:16	UPS communication has been established.

Date of Event: 2022/07

Save Clear... Help

Figure 18

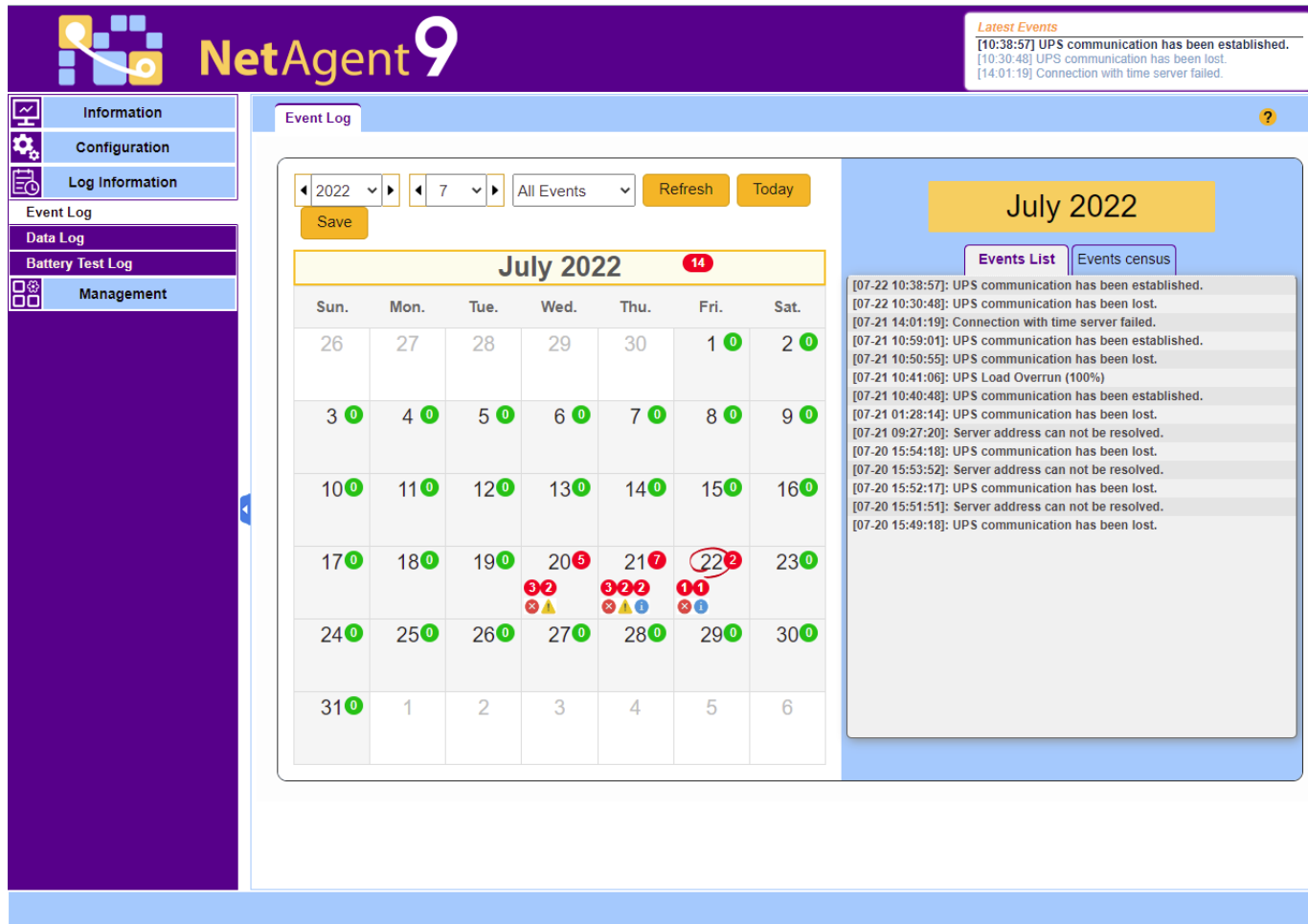


Figure 19

NetAgent IX

Latest Events

[11:09:27] UPS communication has been lost.
 [11:08:59] Server address can not be resolved.
 [10:30:22] UPS communication has been established.

- Information
- Configuration
- Log Information
- Event Log
- Data Log
- Battery Test Log
- Help

Log Information > Data Log

Data Log

1

Date/Time	Input Volt.(V)	Output Volt.(V)	Freq. (Hz)	Load(%)	Capacity(%)	Battery Volt.(V)	Cell Volt.(V)	Temp.	Env. Temp.	Env. Humidity
2022/07/22 10:37:47	220.1	220.1	50.0	100	100	325.20	27.10	30.1°C 86.1°F		
2022/07/22 10:36:42	220.1	220.1	50.0	100	100	325.20	27.10	30.1°C 86.1°F		
2022/07/22 10:35:37	220.1	220.1	50.0	100	100	325.20	27.10	30.1°C 86.1°F		
2022/07/22 10:34:37	220.1	220.1	50.0	100	100	325.20	27.10	30.1°C 86.1°F		
2022/07/22 10:33:32	220.1	220.1	50.0	100	100	325.20	27.10	30.1°C 86.1°F		
2022/07/22 10:32:27	220.1	220.1	50.0	100	100	325.20	27.10	30.1°C 86.1°F		
2022/07/22 10:31:22	220.1	220.1	50.0	100	100	325.20	27.10	30.1°C 86.1°F		
2022/07/22 10:30:22	220.1	220.1	50.0	100	100	325.20	27.10	30.1°C 86.1°F		

1

Date of Datalog

Figure 20

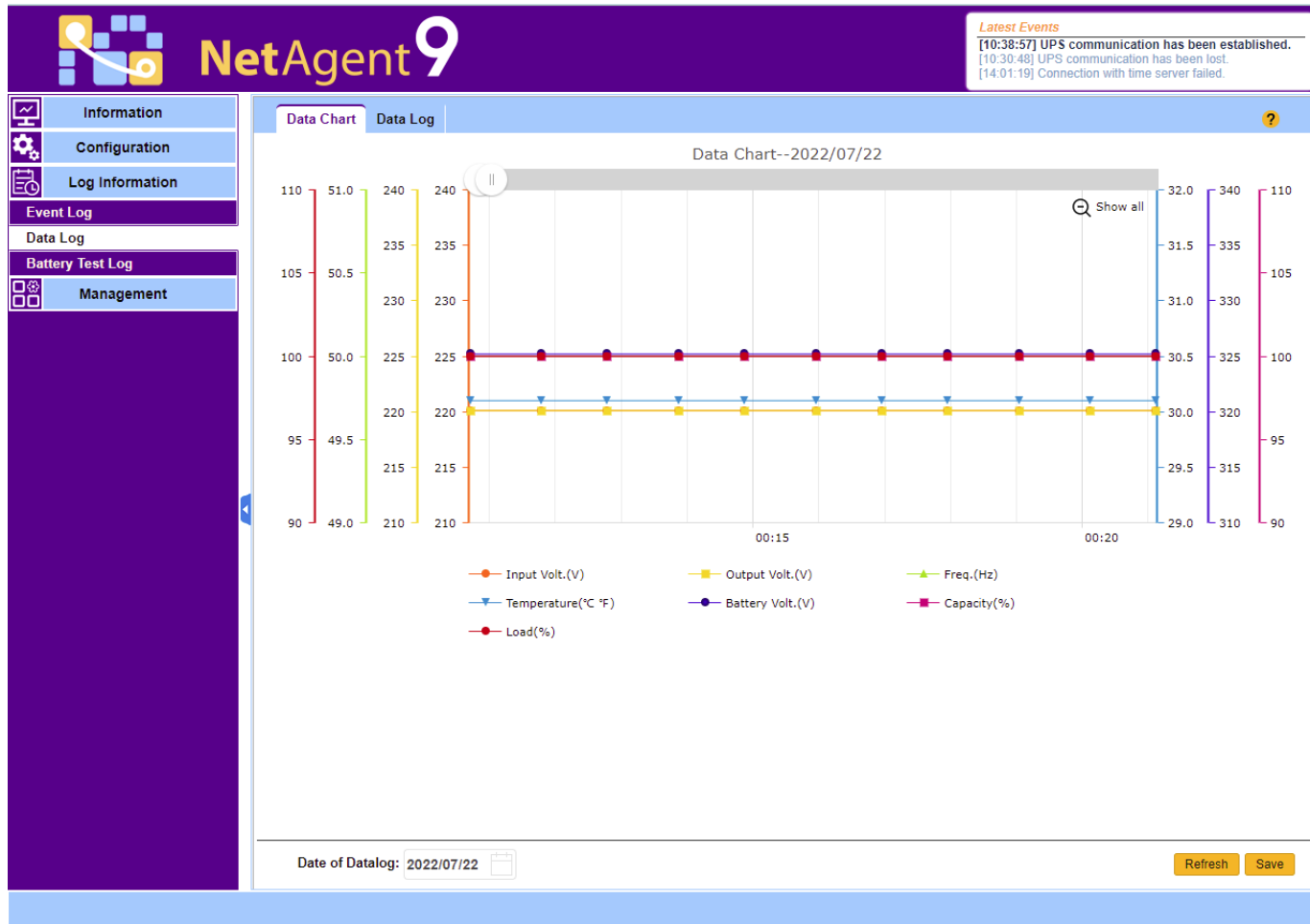


Figure 21

The screenshot displays the NetAgent IX web interface. At the top left, the logo consists of several grey squares of varying sizes, followed by the text "NetAgent IX" in a large, white, sans-serif font. To the right of the logo, a "Latest Events" box contains three entries: "[11:09:27] UPS communication has been lost.", "[11:08:59] Server address can not be resolved.", and "[10:30:22] UPS communication has been established." Below the header is a navigation sidebar with a dark blue background and white text. The sidebar contains the following items: "Information" (with a document icon), "Configuration" (with a wrench icon), "Log Information" (with a folder icon), "Help" (with an information icon), "Search NetAgent" (with a plus icon), "Serial Port Debug", "Help", and "About". The main content area has a dark blue header with the text "Help > Search NetAgent" in orange. Below this is a table titled "Search NetAgent" with the following columns: "Device", "MAC Address", "Hardware", "Firmware", and "IP Address". The table contains two rows of data. At the bottom right of the main content area, there are two buttons: "Refresh" and "Help".

NetAgent IX

Latest Events

- [11:09:27] UPS communication has been lost.
- [11:08:59] Server address can not be resolved.
- [10:30:22] UPS communication has been established.

Help > Search NetAgent

Device	MAC Address	Hardware	Firmware	IP Address
3925868557	00:03:EA:00:00:0D	HDA807	3.10.DA806	192.168.3.111
3927482409	00:03:EA:18:A0:29	HDZ807	3.10.DZ806	192.168.3.108

Refresh Help

Figure 22

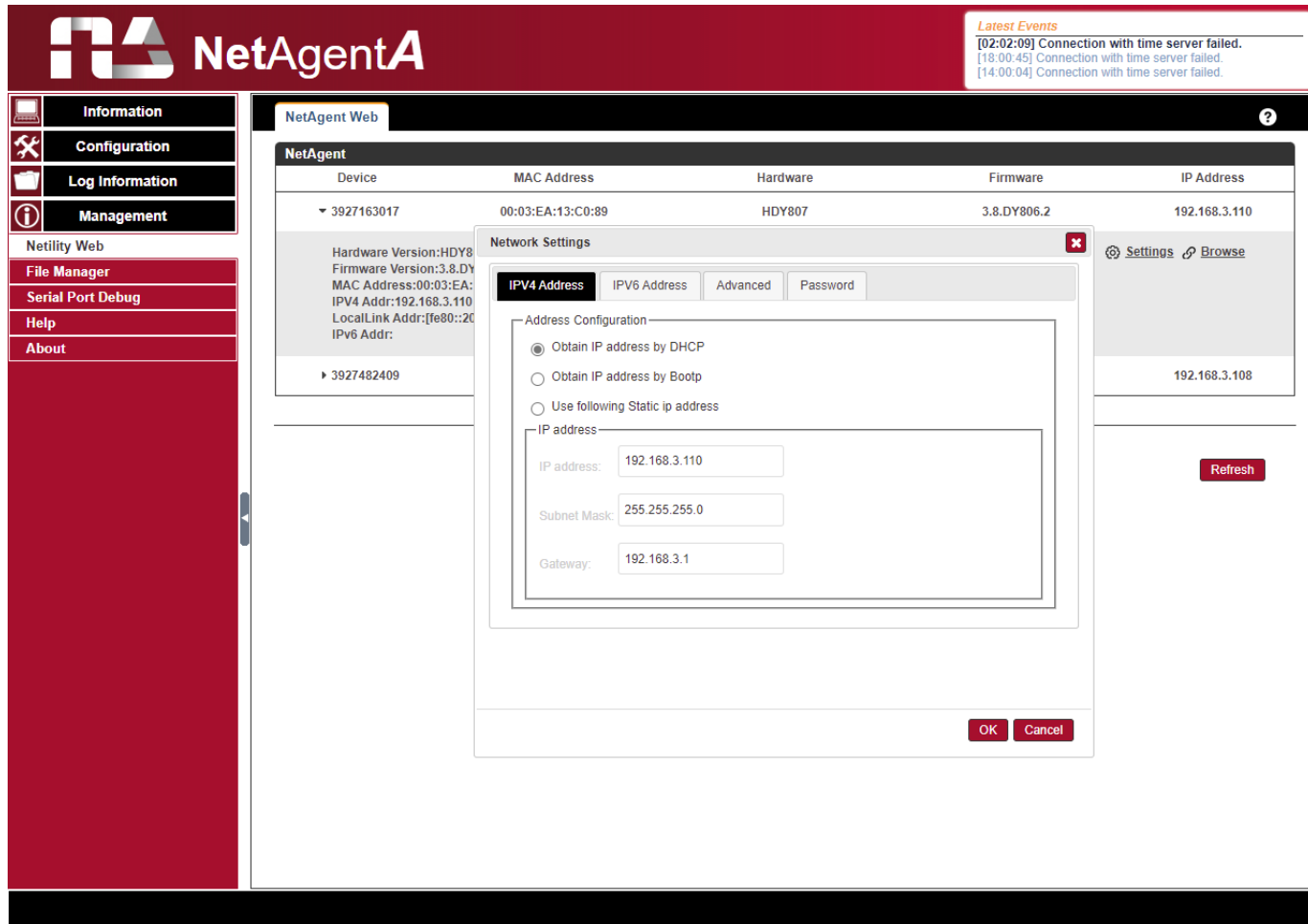


Figure 23

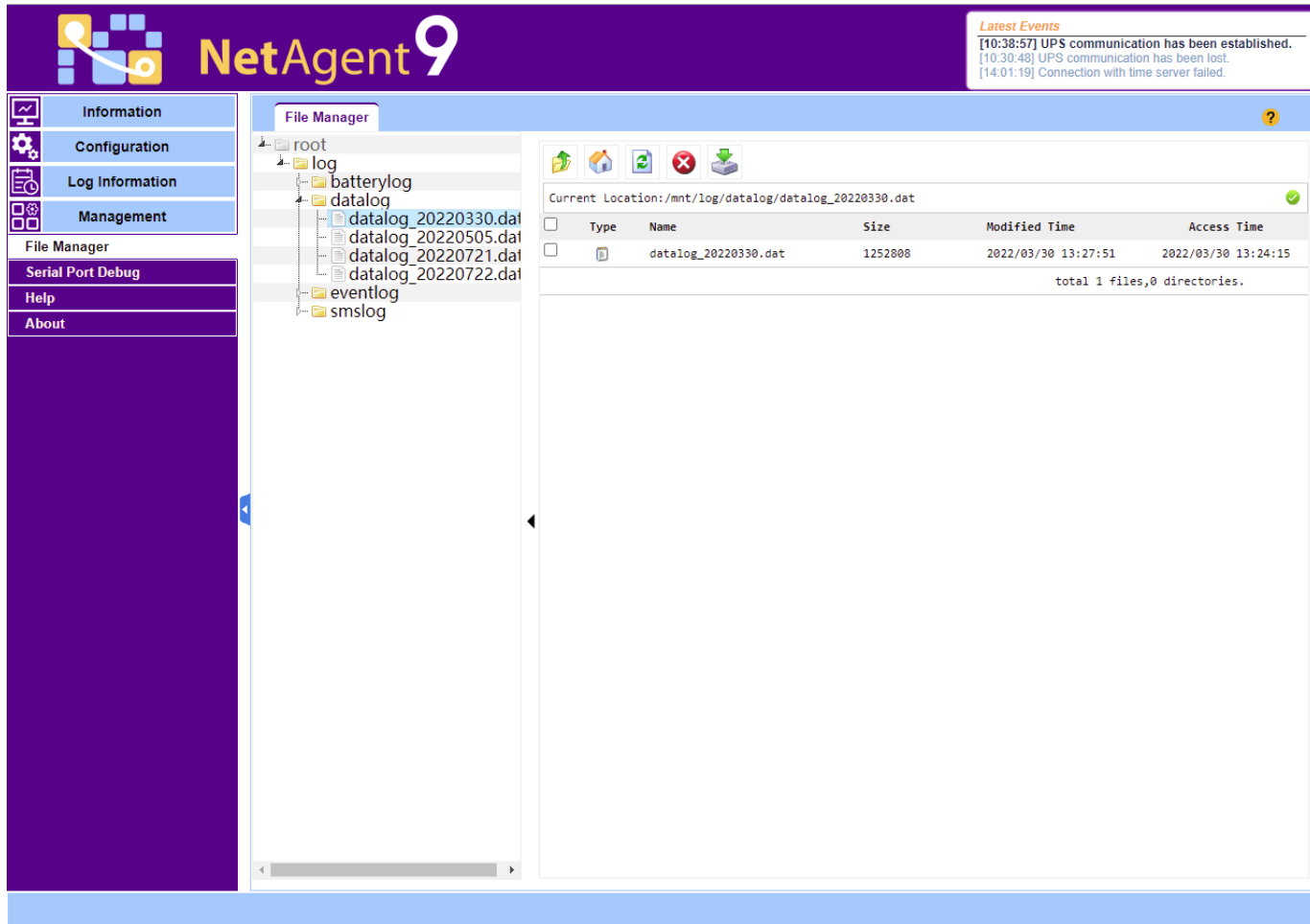



Figure 24



NetAgent 9

Latest Events

[10:38:57] UPS communication has been established.
 [10:30:48] UPS communication has been lost.
 [14:01:19] Connection with time server failed.

- Information
- Configuration
- Log Information
- Management
- File Manager
- Serial Port Debug
- Help
- About

About
Firmware Update

Update by FTP

FTP Server	<input type="text" value="ftp.icv99.com"/>
User	<input type="text" value="netagentA"/>
Password	<input type="password" value="*****"/>

Check for New Firmware Every

Auto Update Every At (Hour : Minute)

Update by Web

Current Firmware Version	3.10.DZ806
Firmware Update	<input type="button" value="选择文件"/> 未选择文件

Mega System Technologies, Inc.
 Tel: +886-2-87922060 Fax: +886-2-87922066
 E-mail: netagent@megatec.com.tw
 http://www.megatec.com.tw




Figure 25