



# Digital TV Headend Product Upgrade Procedure (DMM-2210P)

**Beijing Jaeger Communication Electronic Technology Co.Ltd**

Address : 2/F, Building 23, Area 3, Gaolizhang Road, Wenquan Town, Haidian District,

Beijing, China, 100095

TEL : +86-10-6246 6616, FAX : +86-10-6246 8836

E-mail : [sales@pbicn.com](mailto:sales@pbicn.com)

# Content

<b>Content.....</b>	<b>2</b>
1. Software Upgrade Mode.....	3
2. Software Upgrade Procedure.....	4
2.1. Web-http Mode.....	4
2.2 USB Mode.....	10
2.3 SSH Mode.....	11
3. Trouble Shooting.....	16
4. Contact Us.....	17

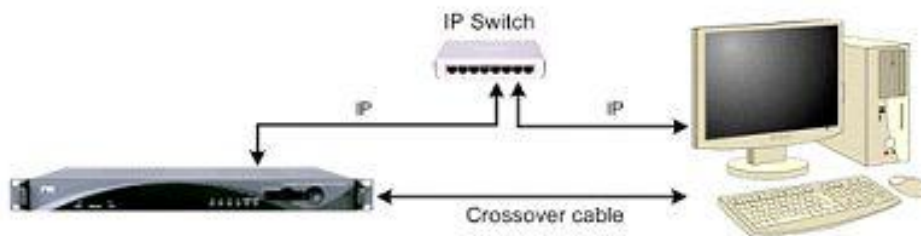
# 1. Software Upgrade Mode

The device can support USB, Web HTTP and SSH, 3 different ways to update the software. The Web HTTP mode is the most convenient way to do it. The USB mode is much faster and easier for field upgrade. There is just one file which named target.tgz needs to be used for upgrading.

## 2. Software Upgrade Procedure

### 2.1. Web-http Mode

1. Turn on the equipment until the booting is completed. You can check the IP address from the Controller (default IP address is [10.10.70.48](#)). Please make sure the equipment and your PC are in the same IP Network, refer to Figure 1.



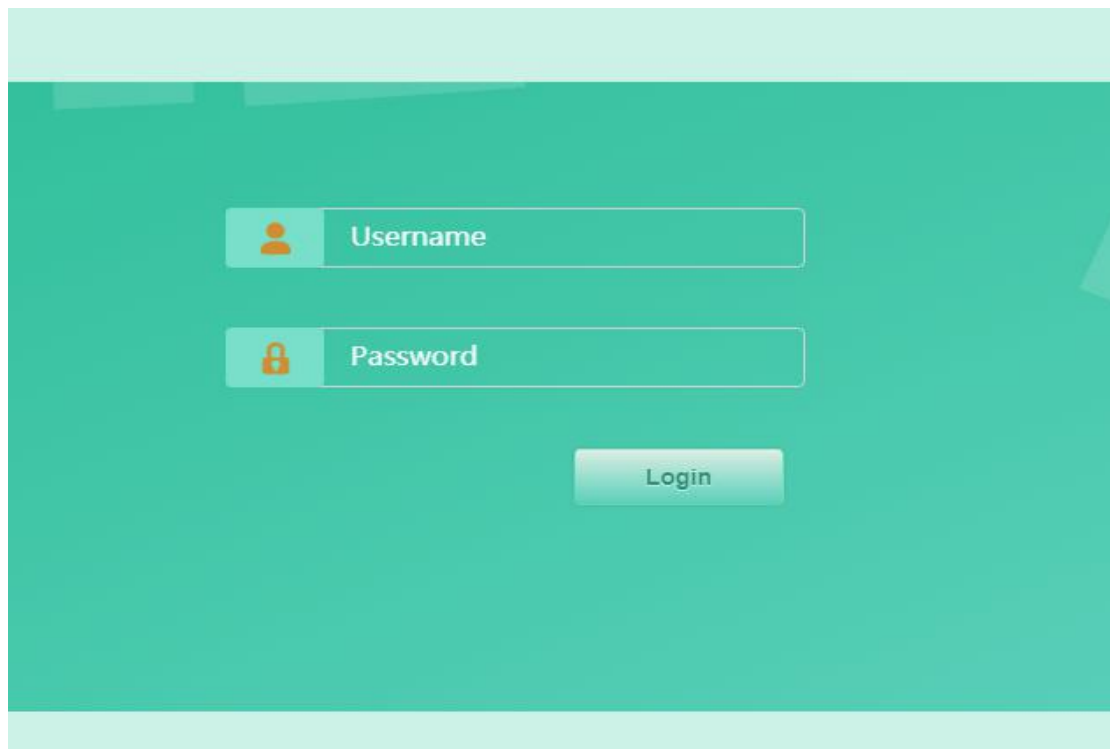
**Figure 1: IP Connection Diagram**

**Importance 1:** Before upgrading the digital TV head-end equipment, please check whether the Hardware and Software are compliant in the release note. The upgrade can be launched via IP network. Connect the equipment to a PC via a cross over CAT-5(RJ45) LAN cable or a normal cable using IP switch/hub. Please ensure that the equipment and the PC are in the same local area network(LAN) before upgrade. The default IP address of equipment is [10.10.70.48](#), and you can check the IP address from controller.

**Importance 2:** Don't switch off the equipment while

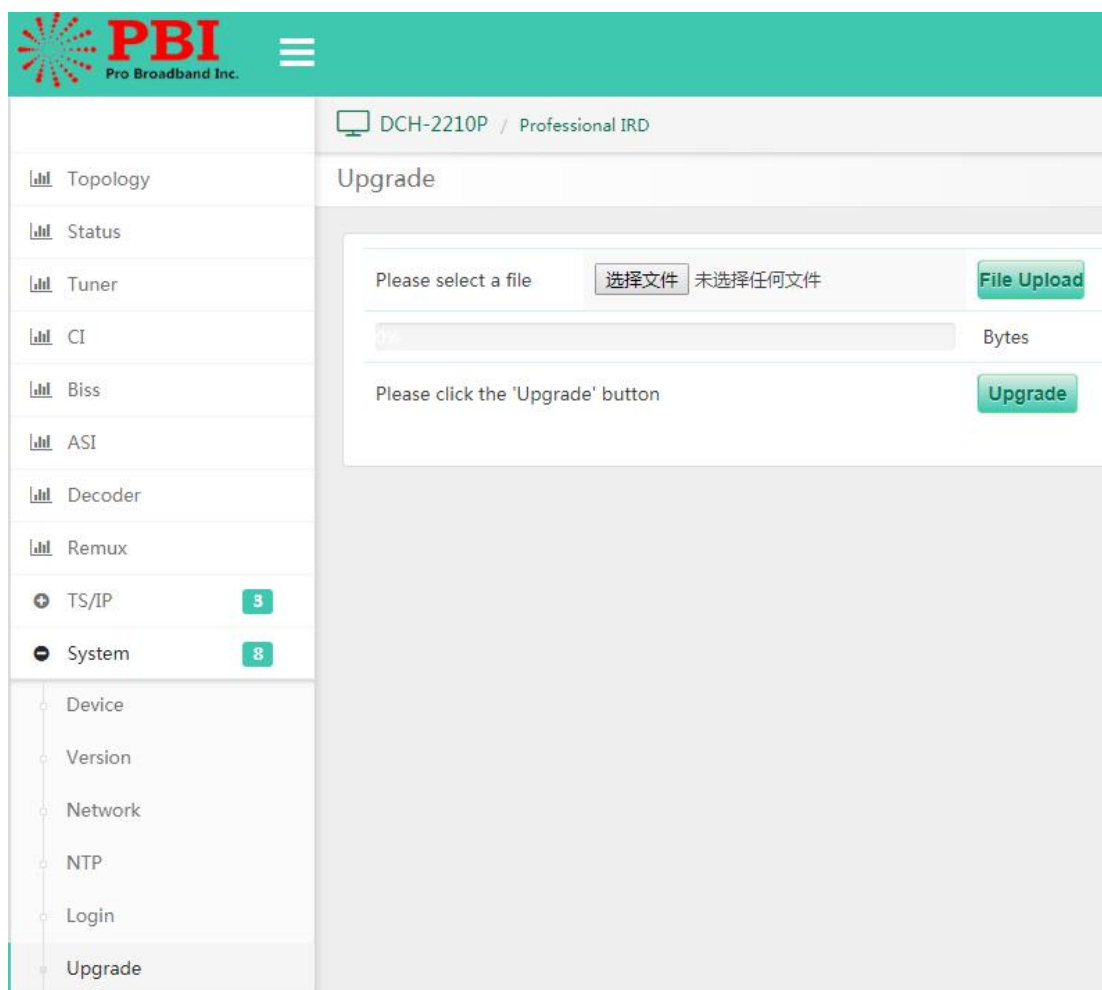
upgrading.

2. Open the Google browser and type <http://10.10.70.48> in the address bar and press **Enter**. If the network configuration is correct, you'll see the login page, as shown below. Use the default user name "root" and password "12345" to log in Web. The new user name and password can be changed by user.



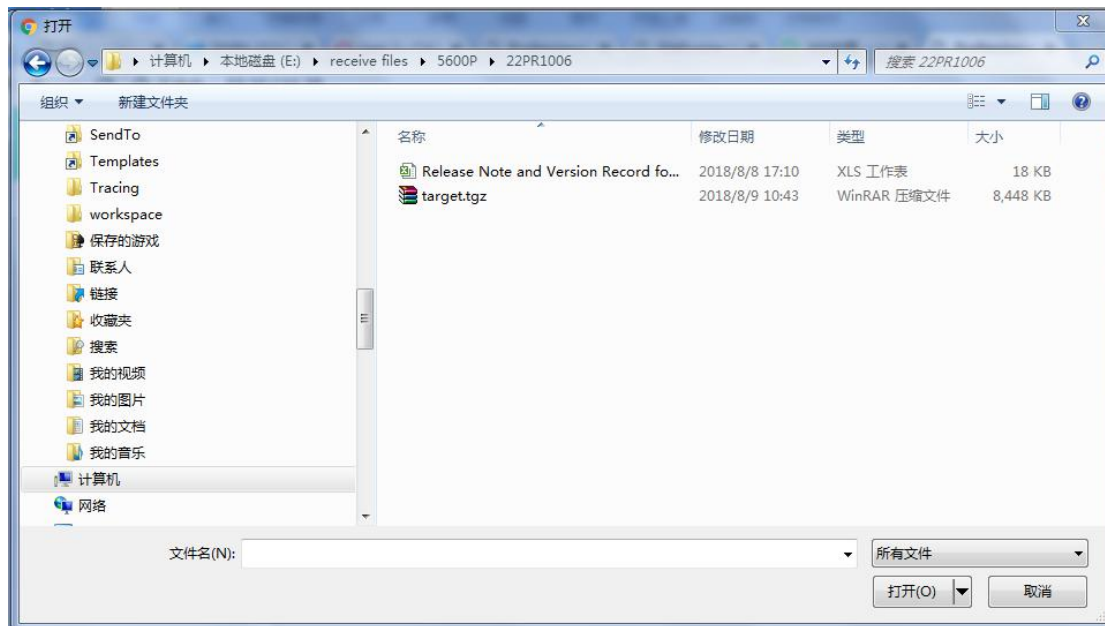
**Figure 2:WEB Page Access**

2. Enter the **System->Upgrade** Page, press the button to address the path of firmware file.



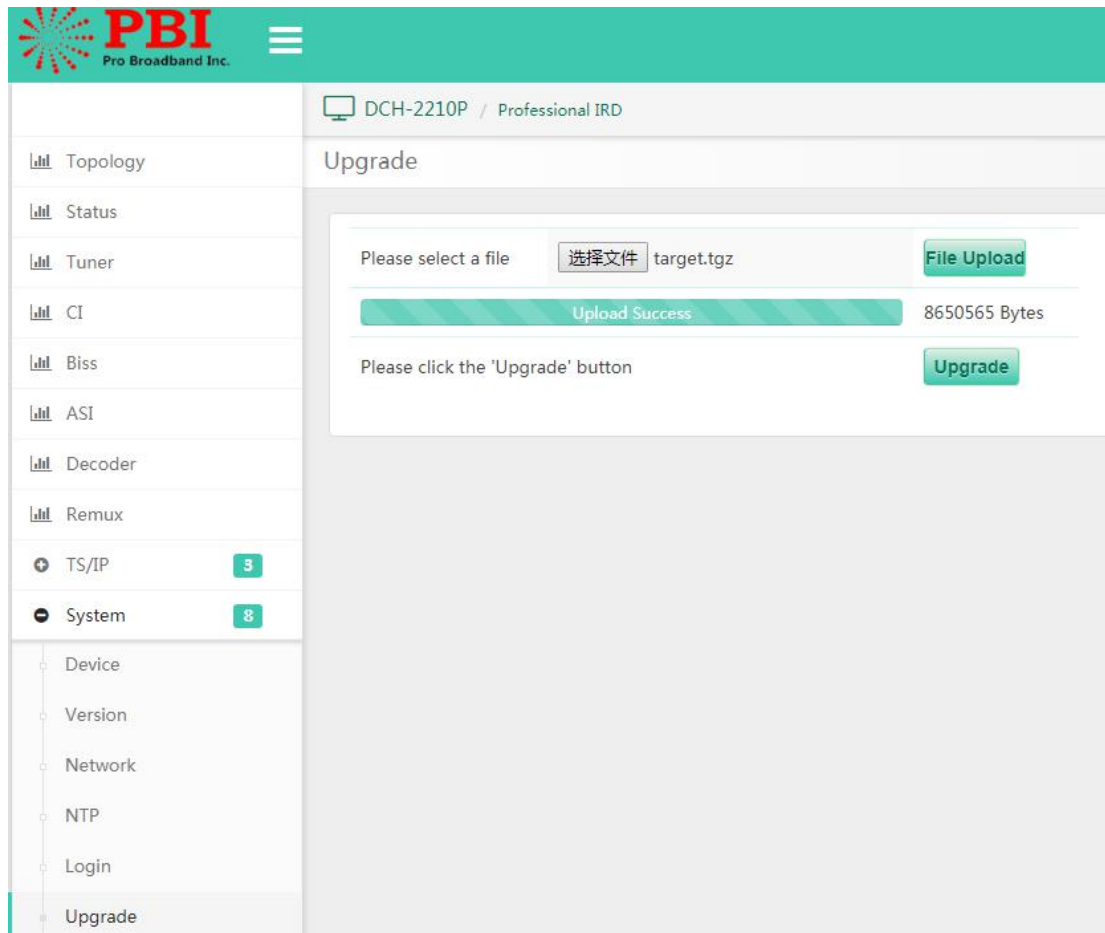
**Figure 3: Upgrade Page**

3. Select the right firmware file which named target.tgz.



**Figure 4: Address the Firmware File**

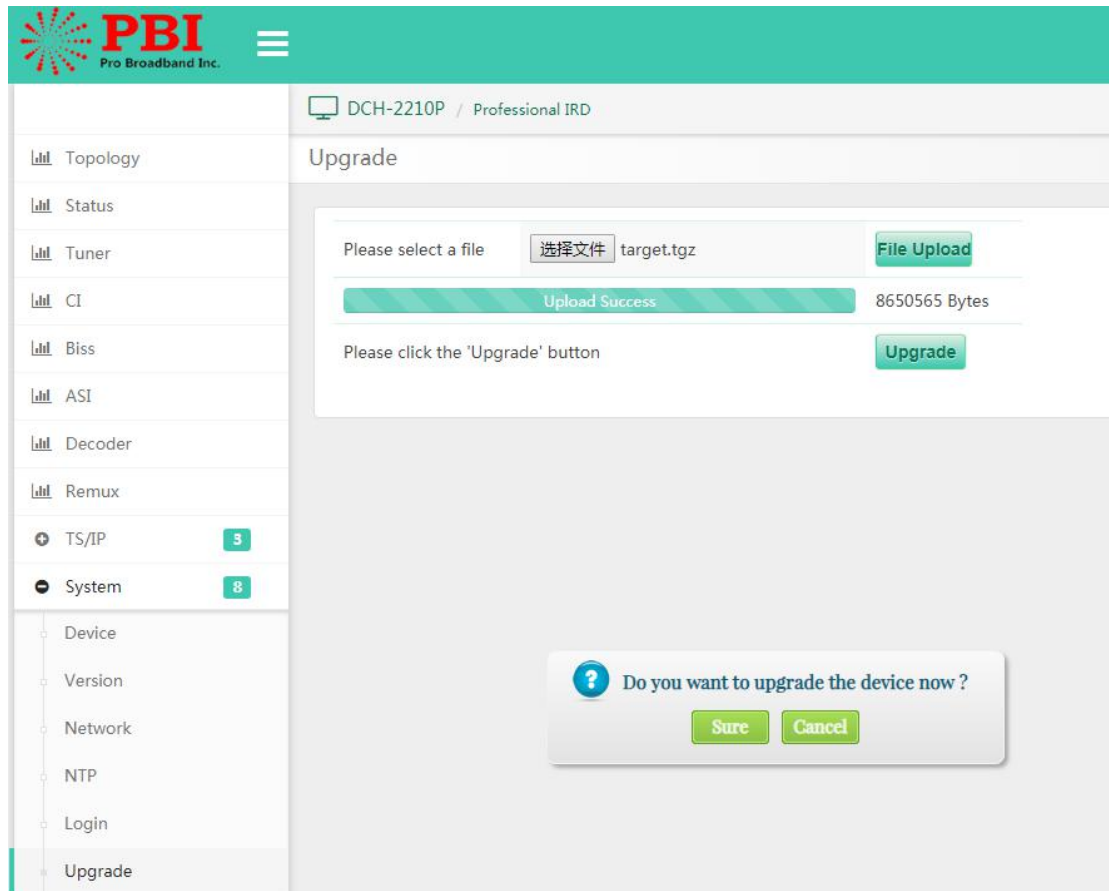
4. Press the **File Upload** button, the new firmware file will be uploaded to the FTP server.



**Figure 5: Upload the file to FTP**

4. Press the **Upgrade** button to start updating.





**Figure 6: Start Upgrading**

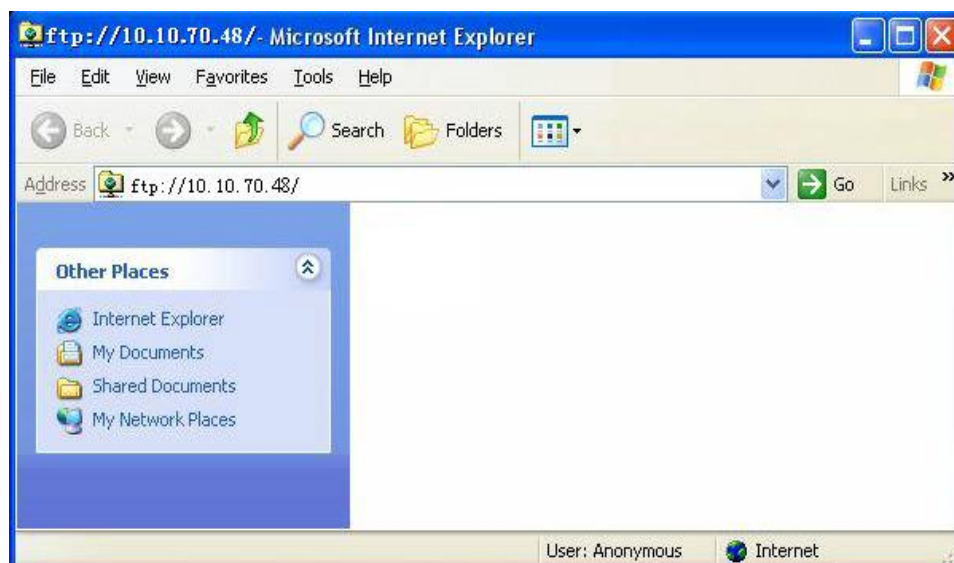
5. The equipment will be rebooted when the process complete. Please wait a few minutes for rebooting equipment.

## 2.2 USB Mode

1. Copy the **“target.tgz”** file in the USB disk, then connect the USB disk with the equipment. The user can check the status Through **“Handset: System->USB Upgrade”**. It will be shown **“Upgrade From USB?”** if the USB key connect with the unit well and found the updating file.
2. Press **Enter**, The status will be shown on the Handset or Lcd, for example **“Software Upgrade ,Please Wait...”** etc.
3. The Handset or Lcd will display **“Upgrade Success!”** when the software upgrade completed, then the unit will reboot automatically.
4. If the upgrade was not successful, the Handset or Lcd will display **“Upgrade Failed !”**, please follow the procedure from step2 to step4, and upgrade again.
5. It's better to check the version through **“Handset or Lcd: System->SW Version”**, whether the update is correctly, It's also available to check in web page.

## 2.3 SSH Mode

1. Turn on the equipment until the booting complete. You can check the IP address from the Handset or Lcd, the default IP address is [10.10.70.48](http://10.10.70.48). Please make sure that the equipment and your PC are in the same IP network, refer to Figure 1.
2. Open the IE browser and type <ftp://10.10.70.48> in the address bar and press **Enter**. If the network configuration is correct, you can open the FTP folder without any error, as shown below.



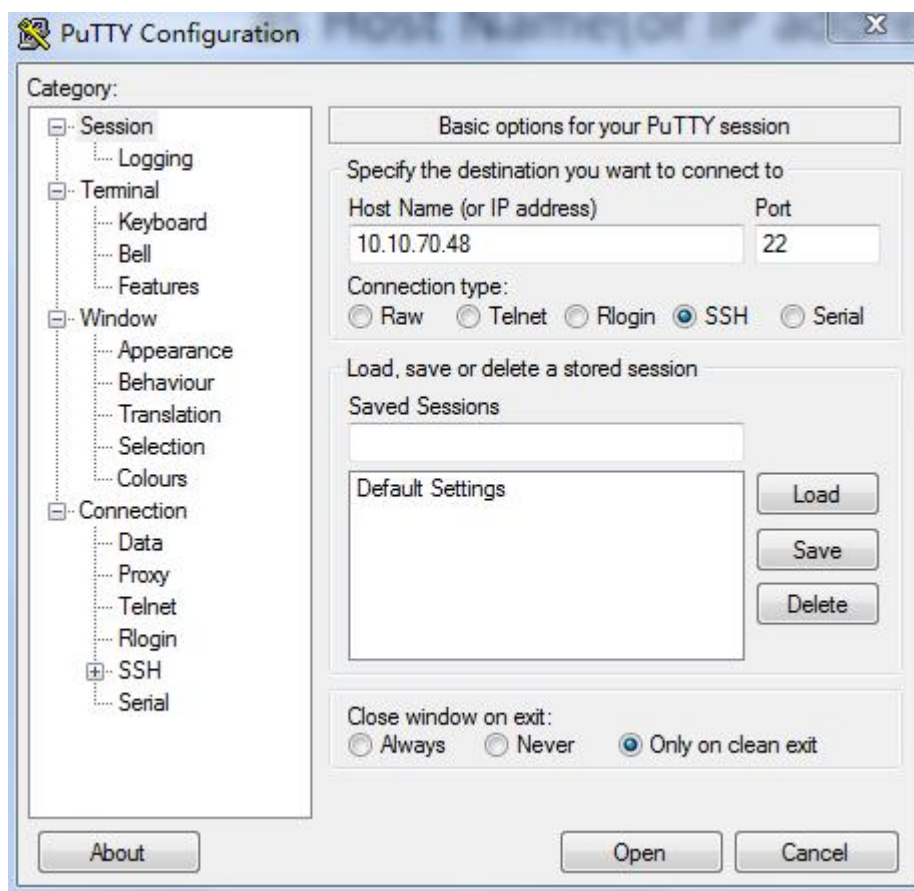
**Figure 7: Open the FTP folder**

3. Please copy the "target.tgz" file in this folder, as shown below.



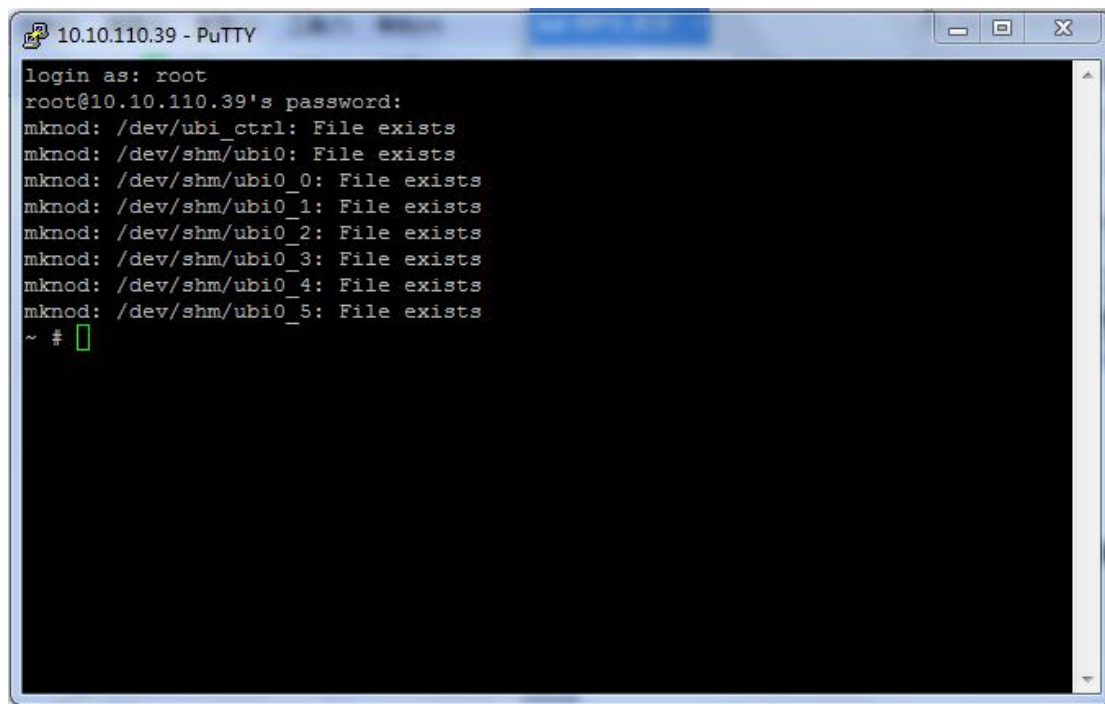
**Figure 8: Copy “target.tgz” File**

4. Download the “**putty software**” from network.
5. Open the “**putty software**” use unit address “[10.10.70.48](http://10.10.70.48)” as Host Name(or IP address), Connection type choose “**SSH**”, press “**open**” button.



**Figure 9: open the SSH**

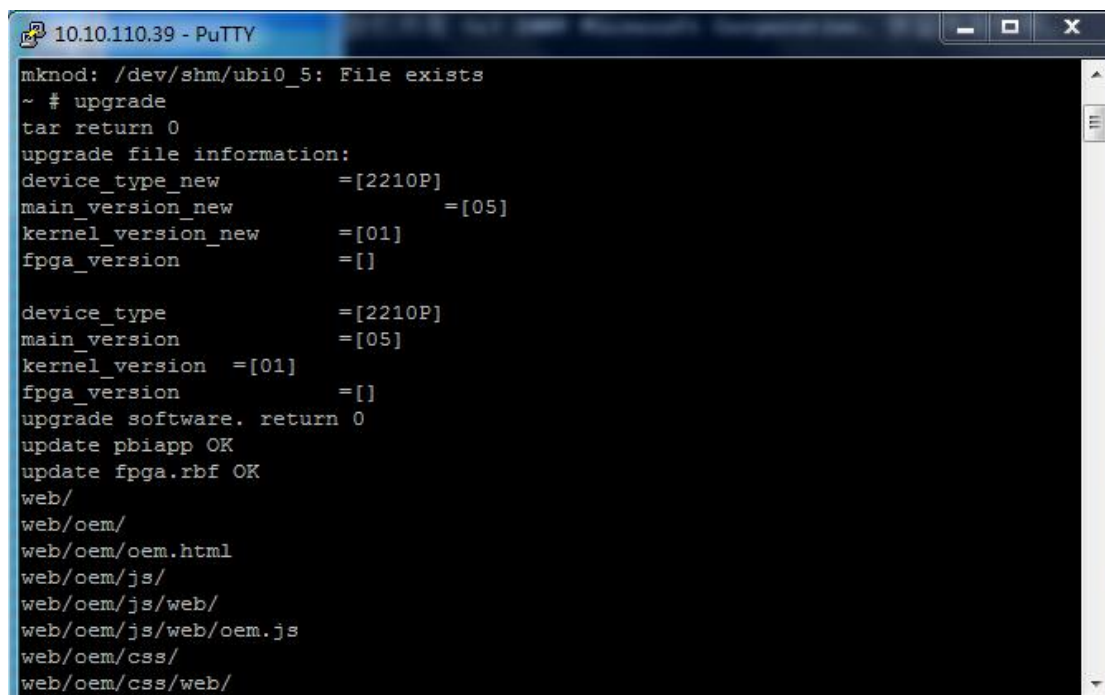
7. Use “**root**” as login as and “**headend**” as password.



```
10.10.110.39 - PuTTY
login as: root
root@10.10.110.39's password:
mknod: /dev/ubi_ctrl: File exists
mknod: /dev/shm/ubi0: File exists
mknod: /dev/shm/ubi0_0: File exists
mknod: /dev/shm/ubi0_1: File exists
mknod: /dev/shm/ubi0_2: File exists
mknod: /dev/shm/ubi0_3: File exists
mknod: /dev/shm/ubi0_4: File exists
mknod: /dev/shm/ubi0_5: File exists
~ #
```

Figure 10: Login menu

8. Key in the command “**upgrade**” and press **Enter**.The upgrade process will be launched.



```
10.10.110.39 - PuTTY
mknod: /dev/shm/ubi0_5: File exists
~ # upgrade
tar return 0
upgrade file information:
device_type_new      =[2210P]
main_version_new     =[05]
kernel_version_new   =[01]
fpga_version         =[ ]
device_type          =[2210P]
main_version         =[05]
kernel_version       =[01]
fpga_version         =[ ]
upgrade software. return 0
update pbiapp OK
update fpga.rbf OK
web/
web/oem/
web/oem/oem.html
web/oem/js/
web/oem/js/web/
web/oem/js/web/oem.js
web/oem/css/
web/oem/css/web/
```

Figure 11: Upgrading

9. When the upgrade is finished, the unit will reboot automatically.
10. It's better to check the version through "Handset or Lcd:System->SW Version", whether the update is correct, It's also available to check in web page.

### 3. Trouble Shooting

1. The IP address of equipment must be in the same local area network(LAN) with the host PC.
2. Use a cross over CAT 5 RJ-45 cable to connect the equipment and the host PC directly or connect them using normal RJ-45 cable through a IP hub/switch.
3. The host PC used for software upgrade have to have only one network card installed to avoid data connection port error.
4. The operation procedure to access the FTP server in IE 7.0 browser is different from its previous version.Please follow the on-line guide reported by IE 7.0.



## 4. Contact Us

**To get further support, please contact PBI Technical Support Center:**

Address : No.3 Feng Zhi East Road, Xi Bei Wang Town, Haidian District,

Beijing, China, 100094

TEL : +86-10-5780 2000, FAX : +86-10-5780 2016

E-mail : [sales@pbicn.com](mailto:sales@pbicn.com)