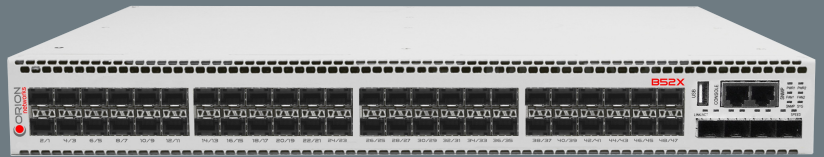


B52X Optical Ethernet Switch



Product Overview

Orion B52X is a new generation Carrier-grade Ethernet aggregation device, is complied with CE 2.0 standards to deliver EPL, EVPL, EP-LAN, EVP-LAN, E-Access services based on three major characteristics, Multi-CoS, Interconnected and Managed.

The switch plays an important role to accelerate large-scale deployment and provide diversified access solutions thanks to its high bandwidth provision (10G) and performance. In addition, this switch also provides with standardized protection mechanisms (ITU G.8031&G.8032). Furthermore, B52X can guarantee Carrier Ethernet service and performance via good SLA L2/L3 (jitter, delay, packet loss) functionality and make network more reliable thanks to its compliance with IEEE 802.3ah, IEEE 802.1ag and ITU-T Y.1731

Product Description

The Orion Networks© B52X Switch supports a number of key features:

- **Performance and Scalability** With high switching capacity, B52X switch supports wire-speed switching . Ethernet connectivity of B52X is accomplished via a hot-pluggable SFP transceiver which supports distance up to 300 meters over multimode fiber and 10 to 80km over single-mode fiber (Distance depends on the chosen optical module)
- **Full Optical Port** – B52X supports abundant optical connection ports to construct full optical network and increase the performance of networks. B52X includes 48 x 100/1000M SFP ports and 4 x 1/10G SFP+ ports.
- **Carrier Ethernet QoS** - IEEE802.1p based QoS is supported in terms of 8 queues per port, SP/WRR/SP+WRR, bandwidth control, IGMP snooping, and multicast VLAN registration (MVR) to save bandwidth and optimize corresponding services.
- **High Reliability** - 4 10Gigabit uplink ports, which could be designed to offer redundant uplinks with various ring protection applications, effectively raised the expansibility and performance of network. Redundant hot-swappable power modules increase protection fault tolerance

Features

Switching mode	Store and forward mode 16Mbit switching buffer Supports jumbo frame
Packet Forwarding	MTU: 12288 bytes DLF Control
MAC Address Table	MAC address auto learning/add/remove/searching/statistic/aging MAC address aging time configuration (10-1000000 seconds) Up to 32K MAC addresses
VLAN	IEEE 802.1Q VLAN: 4K active VLANs Flexible QinQ VLAN mapping
Link Aggregation	Up to 3 link aggregation groups and 4 ports per group Load balancing based on IP and MAC address
Digital Diagnostic	Supports SFP digital diagnostic
STP	STP, RSTP & MSTP Supports 64 instances, 256 STG
OAM	IEEE802.3ah OAM including discovery, link performance, remote loopback, fault detection & performance stats per OAM standards OAM Active/Passive mode Supports OAM MIB Variable Get function and OAM Event function Supports extended OAM
QoS	Supports port/CoS/DSCP mapping Supports SP, WRR and SP+WRR scheduling Up to 8 queues per port Support hierarchical bandwidth profile in the ingress direction Rewriting of 802.1p CoS/DSCP
ACL	ACL based on VLAN, CoS, MAC, EtherType, IPv4, IPv6, or user-define combinations
Routing	Supports static routing and default gateway
Flow Control	IEEE 802.3x in full duplex mode Back pressure in half duplex mode Support port-based configurations
Storm Control	Broadcast, Multicast, DLF storm control
Statistics	Support port, port dynamic statistics

Features

Multicast	<ul style="list-style-type: none"> 1K multicast addresses Static multicast group IGMP Snooping V1/V2/V3 Multicast filtering & unknown multicast discard Supports MVR
LLDP	<ul style="list-style-type: none"> Supports discovery remote based on link layer Supports getting remote basic information
Security	<ul style="list-style-type: none"> Supports RADIUS, TACACS+ Supports port security IP Source Guard Supports MAC address and port bonding Supports dynamic ARP Inspection Supports PPPoE agent and DOT1x.

Specifications

Performance	Switching fabric: 176 Gbs
Capacity	<ul style="list-style-type: none"> 128MB DDRAM 32MB flash
Physical interface	<ul style="list-style-type: none"> NNI: 4 x 10GE SFP+ UNI: 48 x 100BASE-FX/1000Base-X SFP SNMP interface: 1 x RJ45 Console interface: 1 x RJ45
Power Specs	<ul style="list-style-type: none"> AC: 100~240V DC: 36V ~ 72V Max power consumption: 95W
Usage Conditions	<ul style="list-style-type: none"> Operating temp: -5~50°C (23~122°F); Storage temp: -25~60°C (-13~140°F); Humidity: 10~90% non condensing
Dimensions	360(L) x 440(W) x 44(H) mm
Weight	7 kg

Compliances

Standards & Protocols

IEEE802.1Q (VLAN), 802.3ad (LAG), 802.1ad (QinQ), 802.1ag (CFM), 802.1D (STP), 802.1w (RSTP), 802.1s(MSTP), 802.1p (QoS/CoS Priority), 802.1x (Security), 802.3x Flow Control, 802.3ah OAM G.8031 (ELPS), G.8032 (ERPS), Y.1731 IETF RFC 2865 (RADIUS), 2819 (RMON), MEF 6, 9, 10, 14, 16, 36 (CE1.0-certified, CE2.0-compliant), Safety Ce certified, UL and RoHS compliant, EMI Class A

Corporate and Sales Headquarters
Orion Networks
4262 Entry Ct STE K
Chantilly, VA 20151 USA
Phone: 512.646.4025
www.orionnetworks.com

To purchase Orion Networks solutions, please contact your Orion Networks representative or authorized reseller.

Copyright 2014 Orion Networks. All rights reserved. Orion Networks, the Orion Networks logo are registered trademarks of Orion Networks, in the United States and other countries. All other trademarks, service marks, or registered service marks are the property of their respective owners. Orion Networks assumes no responsibility for any inaccuracies in this document. Orion Networks reserves the right to change, modify, transfer, or otherwise revise this publication without notice.