

Smart PSS (Video Talk)

Software version

Smart PSS: V1.13 Test version

VDP: 2015 baseline version & 8 language version

Example

VTO: IP address 10.15.1.244

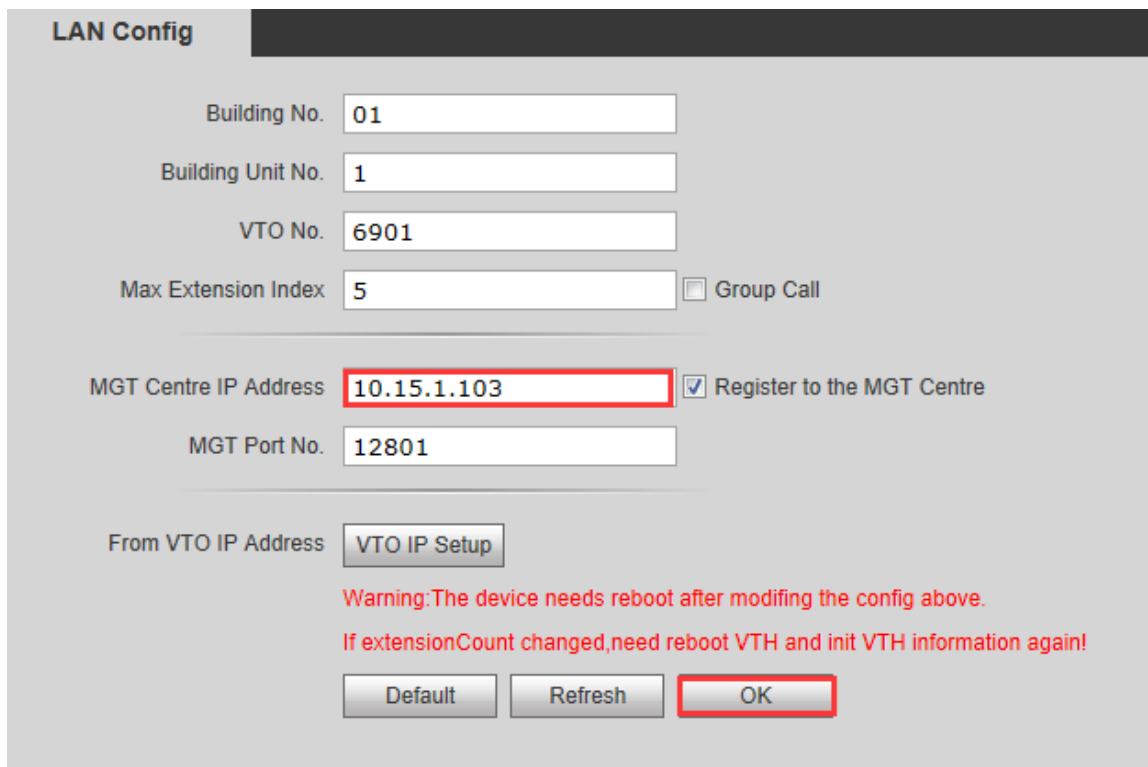
VTH: IP address 10.15.1.109, Room number 9901

Smart PSS: IP address 10.15.1.103

1. Connect VTO and VTH , make them working well
2. VTO web setting

Login VTO's web, check LAN Config>MGT Center IP Address, Check 'OK', and reboot the device

Note: here MGT Center IP Address is the PC's IP which installed Smart PSS



LAN Config

Building No.

Building Unit No.

VTO No.

Max Extension Index Group Call

MGT Centre IP Address Register to the MGT Centre

MGT Port No.

From VTO IP Address

Warning: The device needs reboot after modifying the config above.
If extensionCount changed, need reboot VTH and init VTH information again!

Figure 1

3. Smart PSS Setting

Step 1 Check Settings>Device, Search the device in the same local network, add the VTO as you want. It will show 'Online' after added.

Note: there is no need to add VTH, it will be online automatically when VTO added

Smart PSS (Video Talk)

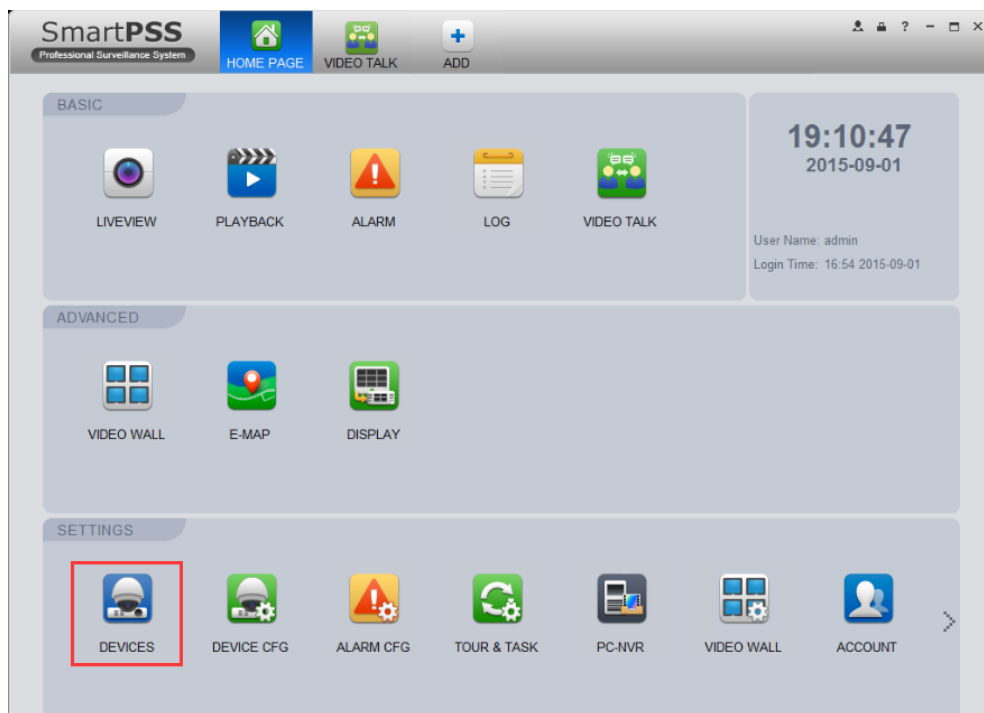


Figure 2

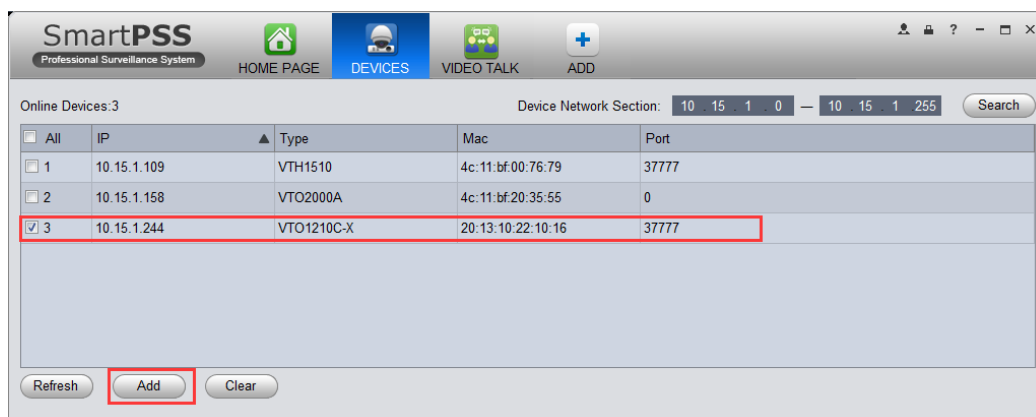


Figure 3

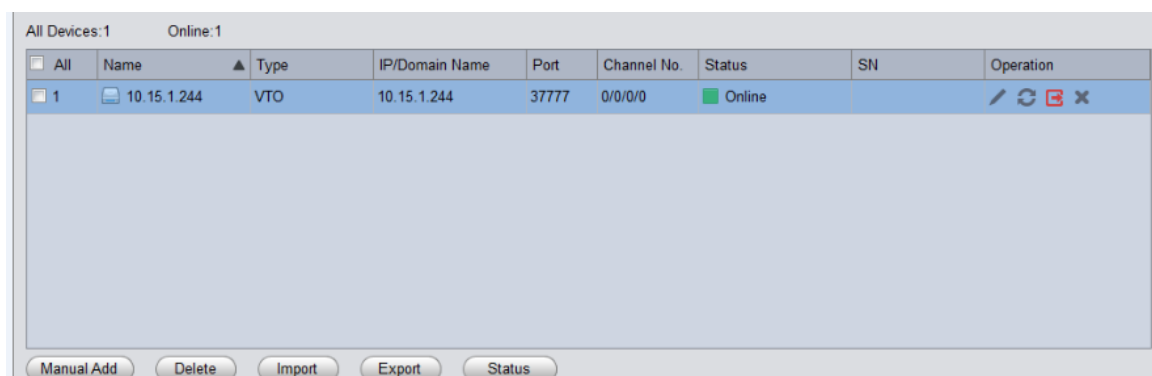


Figure 4

Smart PSS (Video Talk)

Step 2 Check Video Talk> setting, input PC's IP, for example: 10.15.1.103

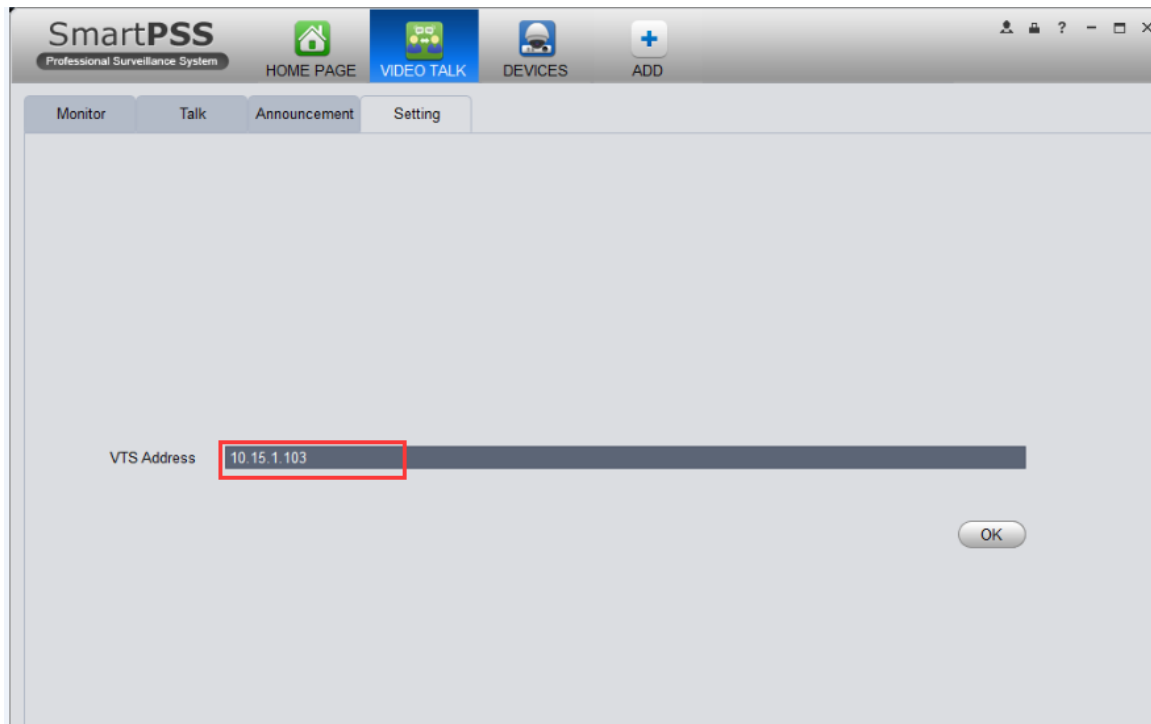


Figure 5

Step 3 Check Talk, here will show the device's status, you can operate the system when the devices are online. Here are 3 functions as below:

(1) Monitor

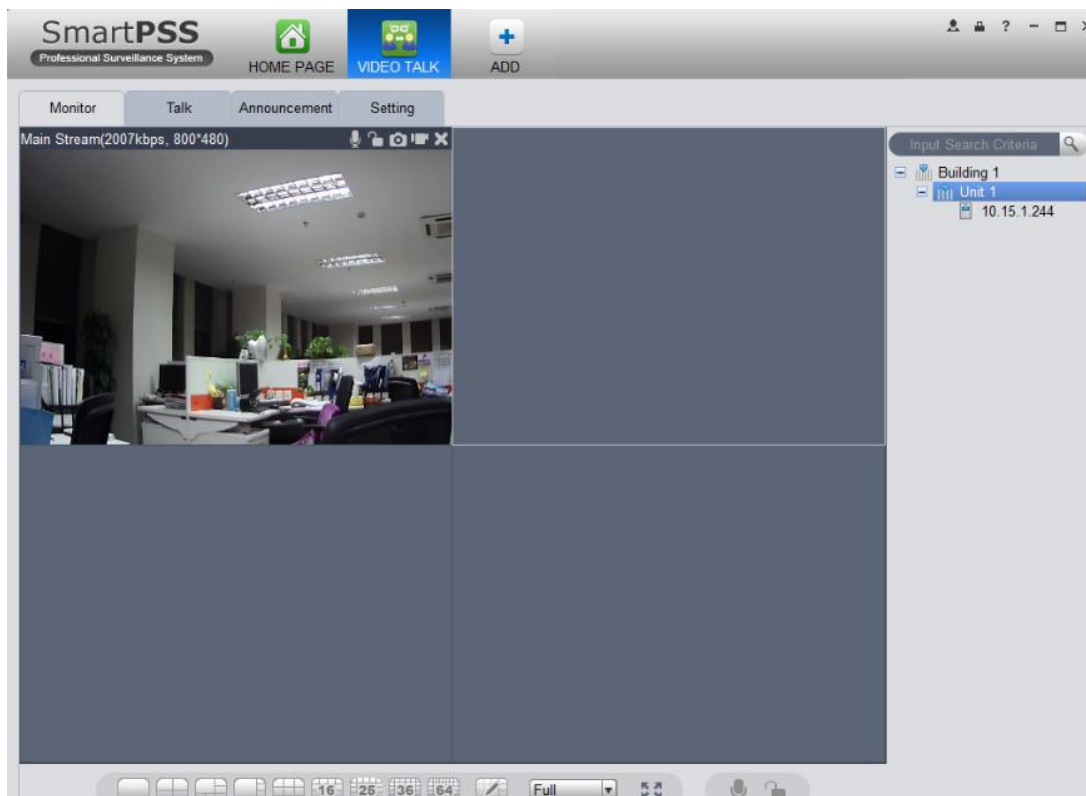


Figure 6

Smart PSS (Video Talk)

(2) Talk

Smart PSS can talk with VTO and VTH, and also can receive call form them.

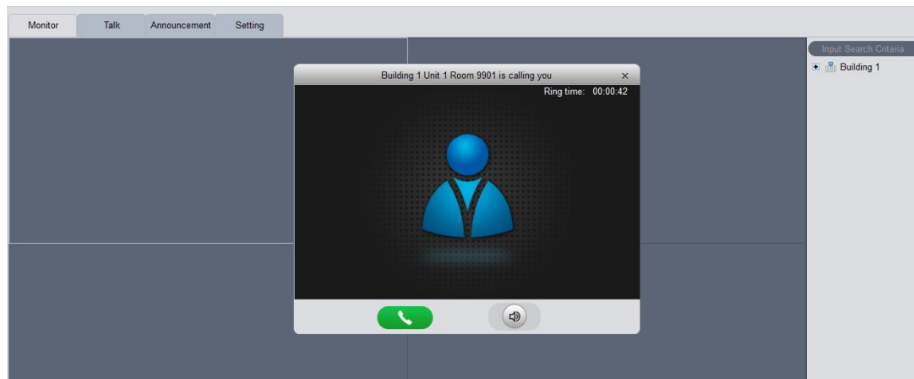


Figure 7 calling from VTH

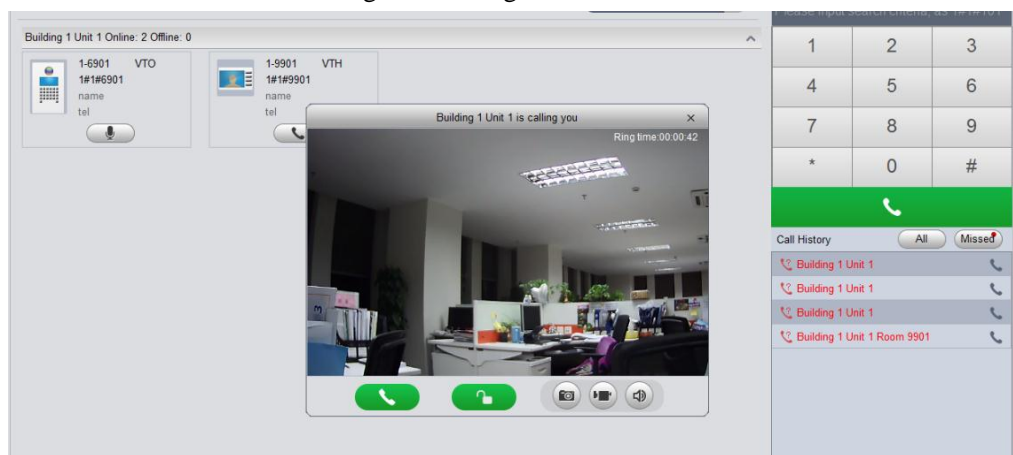


Figure 8 calling from VTO

(3) Send message to VTH

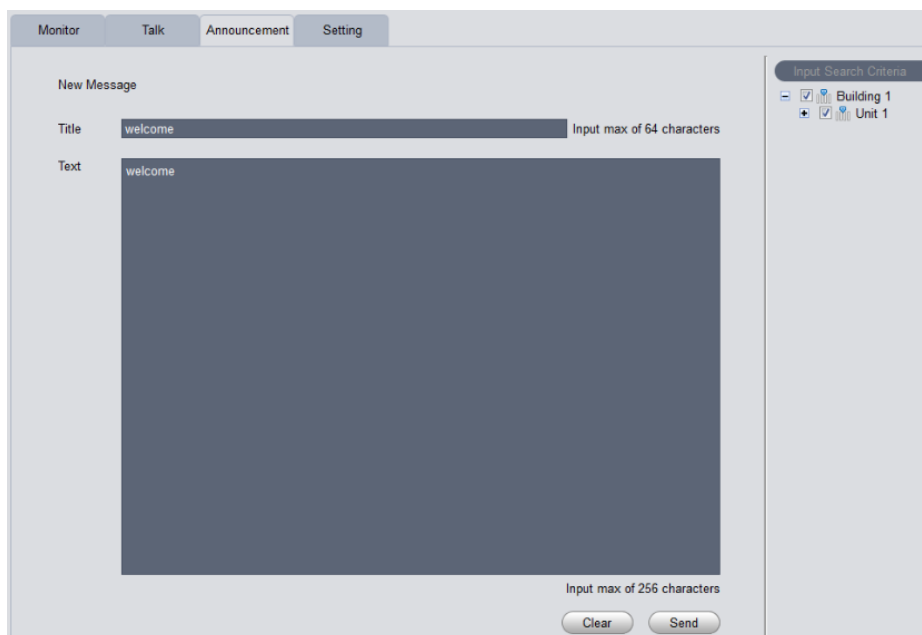


Figure 9