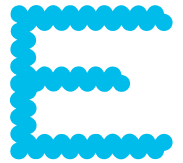
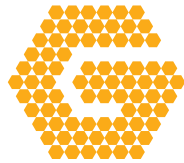
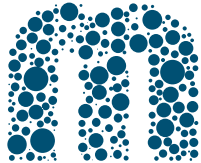


Cisco *live!*

January 28 - February 1, 2019 - Barcelona



INTUITIVE



BRKARC-2001

# ASR 1000 Architecture Overview and Use Cases

Jason Yang, Technical Marketing Engineer –  
CCIE#10467



INTUITIVE

# Agenda

- Introducing the ASR 1000
- ASR 1000 System Architecture
- ASR 1000 Software Architecture
- Applications & Solutions
- Conclusion

# Cisco ASR 1000 Series Routers: Overview

2.5 Gbps to 200Gbps – Designed today to scale up in the future

## COMPACT, POWERFUL ROUTER

- Line-rate performance 2.5G to 200G
- Investment protection with modular engines, IOS CLI and SPAs for I/O
- Hardware assists for ACL, QoS, etc.
- Hardware-based QoS engine with up to 464k queues
- New Ethernet CC, 100GE & 40GE EPA

## BUSINESS-CRITICAL RESILIENCY

- Fully separated control and forwarding planes
- Hardware and software redundancy
- In-service software upgrades
- Inter and Intra-chassis redundancy
- DCI to support clustering across geographically dispersed DC

## INSTANT ON SERVICE DELIVERY

- Scalable on-chip service enablement through software licensing
- Industry leading VPN/Crypto solutions
- Optimal user/app experience with AVC, Path Control, and AppNav
- Software consumption model with CiscoONE

### Fixed Chassis

### IOS-XE

### Modular Chassis

ASR1001-X



2.5 to 20  
Gbps

ASR1001-HX



5 to 36  
Gbps

ASR1002-X



44 to 60  
Gbps

ASR1002-HX



44 to 100  
Gbps

ASR1004



10 to 40  
Gbps

ASR1006



20 to 100  
Gbps

ASR1006-X



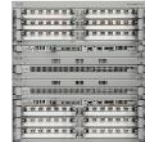
40 to 100  
Gbps

ASR1009-X



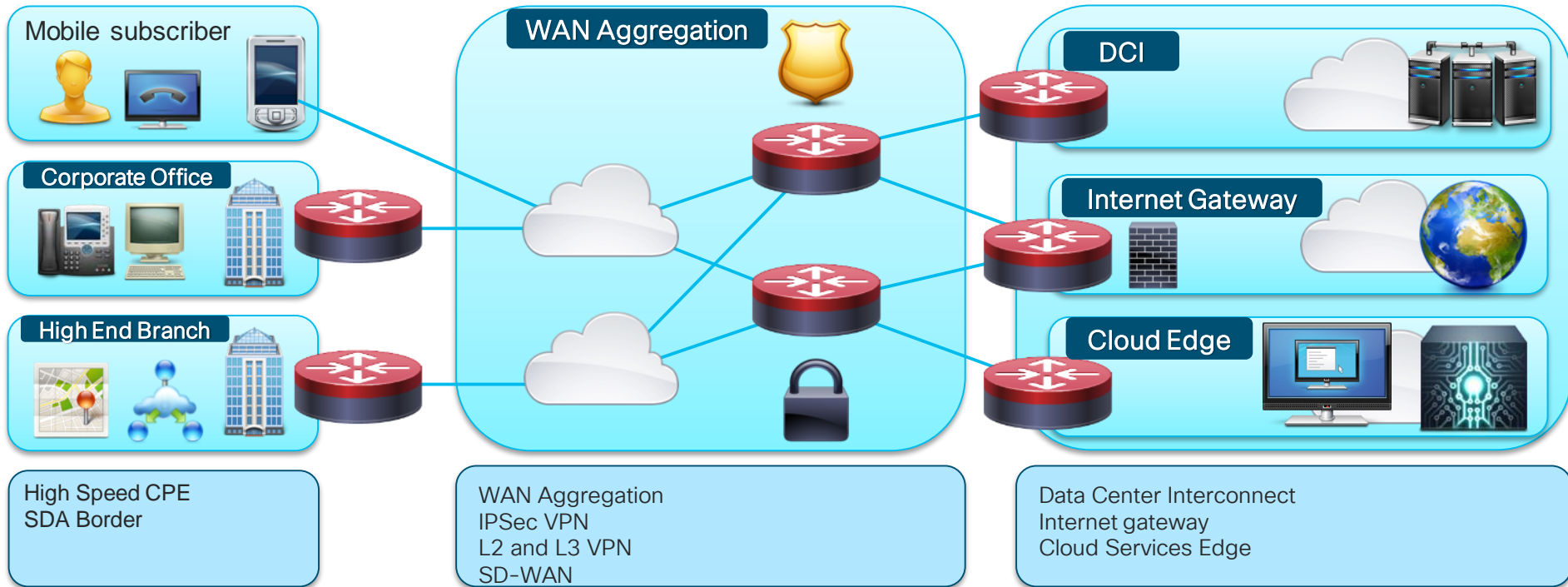
40 to 200  
Gbps

ASR1013

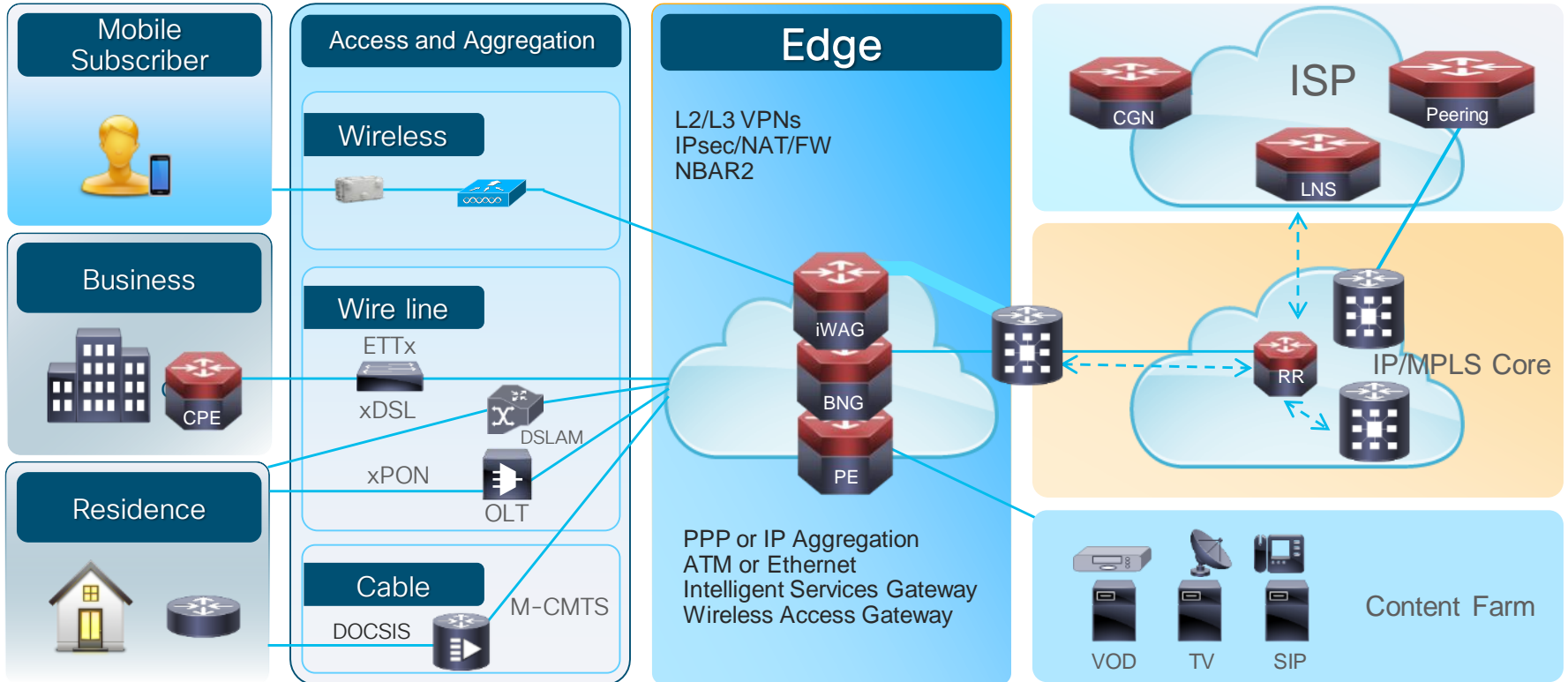


40 to 200  
Gbps

# ASR 1000 Enterprise Applications

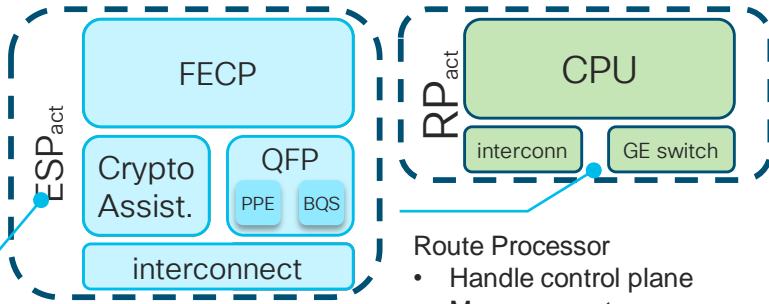


# ASR 1000 Service Provider Applications



# ASR 1000 System Architecture

# ASR 1000 Building Blocks



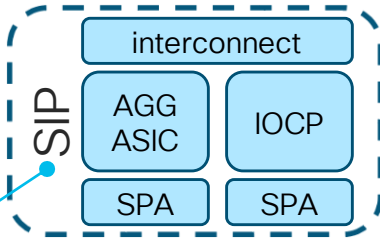
- Centralized Forwarding Architecture
  - All traffic flows through the active ESP, standby is synchronized with all the states
- Distributed Control Architecture
  - All major system components have a powerful control processor dedicated for control and management planes

**Embedded Service Processor**

- Handles forwarding plane traffic

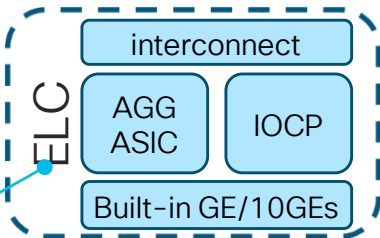
**Route Processor**

- Handle control plane
- Manages system



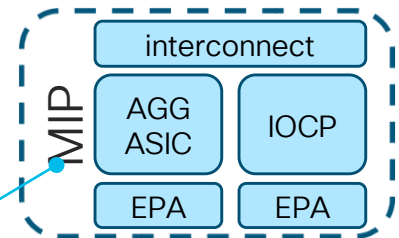
**SPA Interface Processor**

- Houses Shared Port Adapter (SPA)
- Packets buffer



**Ethernet Linecard**

- Built-in GE/10GE ports
- Packets buffer



**Modular Interface Processor**

- Houses Ethernet Port Adapter (EPA)
- Packets buffer



# ASR 1000 Modular Chassis Overview

ASR 1004



ASR 1006



ASR1006-X



ASR 1009-X



ASR 1013

	ASR 1004	ASR 1006	ASR1006-X	ASR 1009-X	ASR 1013
RP Slots	1	2	2	2	2
ESP Slots	1	2	2	2 (super)	2 (super)
SIP/MIP Slots	2 (SIP only)	3 (SIP only)	2	3	6
Built-In Ethernet	N/A	N/A	N/A	N/A	N/A
Redundancy	Software	Hardware	Hardware	Hardware	Hardware
Height	7" (4RU)	10.5" (6RU)	10.5" (6RU)	15.7" (9RU)	22.7" (13RU)
Bandwidth	10 - 40 Gbps	10 -100 Gbps	40 - 100 Gbps	40 - 200 Gbps	40 - 200 Gbps
Max Output Pwr	765W	1275W	1100 power modules N+1, Max 6	1100 power modules N+1, Max 6	3200W
Airflow	Front to back	Front to back	Front to back	Front to back	Front to back

# ASR 1009-X

## System Management

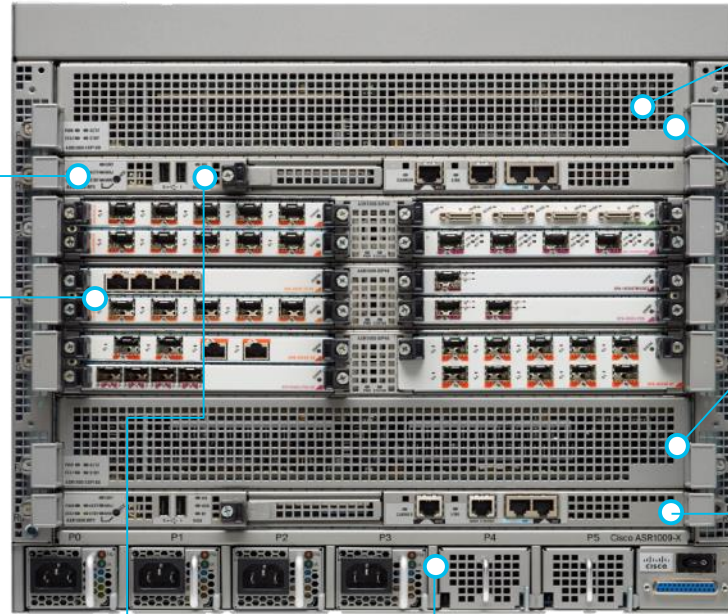
- RJ45 Console
- Auxiliary Port
- 2x USB Ports

## I/O Connectivity

- 12x SPA slots (SIP-40)
- 3x ELC slots
- 6x EPA (MIP-100)

## Modular Fan Tray

- Field Replaceable
- 30% improvement in airflow per slots vs integrated Fan module



## Forwarding Plane (ESP)

- Up to 200Gbps per system
- Supports ESP40, ESP100, ESP200 and future ESPs

## Hardware Redundancy

- Dual ESP and RP slots for data plane and control plane redundancy
- ISSU

## Control Plane

- Support RP2 and RP3
- 8 - 64 GB Memory
- FIPS-140-2 certification

## BITS clocking

- Stratum 3 built-in

## Power Supply

- Modular power supply with N+1 redundancy
- High efficiency, Load sharing, Hot-swappable
- AC (1100W) or DC (950W)

# ASR 1000 Modular Chassis Compatibility Matrix

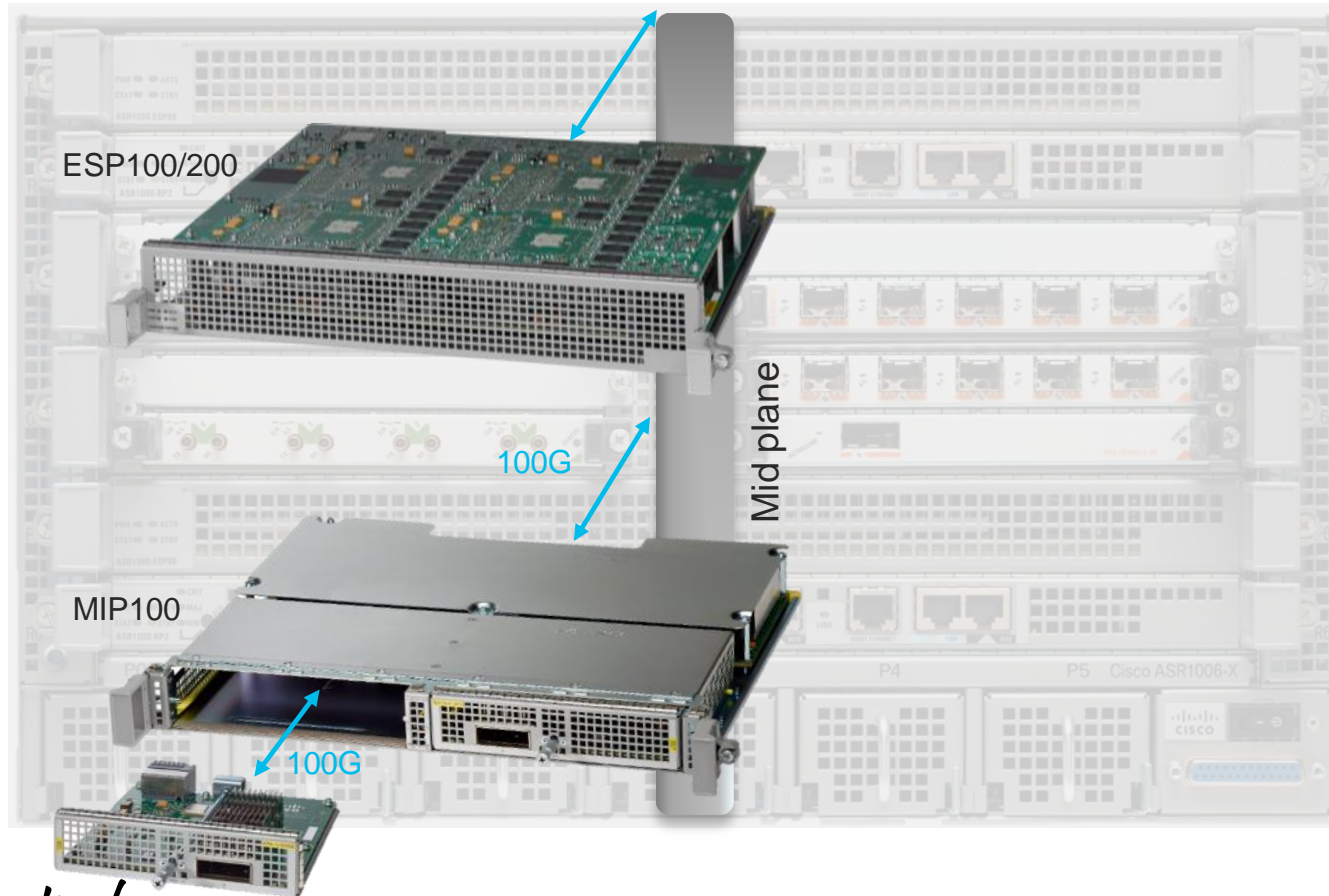
Chassis	RP2	RP3	SIP40	ELC	MIP100	ESP20	ESP40	ESP100	ESP200
ASR1004	Yes	No	Yes	Yes	No	Yes	Yes	No	No
ASR1006	Yes	No	Yes	Yes	No	Yes	Yes	Yes	No
ASR1013	Yes	Yes	Yes	Yes	Yes <sup>(2)(3)</sup>	No	Yes	Yes	Yes
ASR1006-X	Yes <sup>(1)</sup>	Yes	Yes	Yes	Yes <sup>(3)</sup>	No	Yes	Yes	No
ASR1009-X	Yes <sup>(1)</sup>	Yes	Yes	Yes	Yes <sup>(3)</sup>	No	Yes	Yes	Yes

<sup>(1)</sup>RP2 with new CPLD

<sup>(2)</sup>100G support in Slots 2&3; others at 40G

<sup>(3)</sup>ASR1000-MIP100 is not supported with ESP40

# ASR1000-MIP100 (Modular Interface Processor)



1006-X/1009-X with  
ESP100/ESP200

10x10G

- Line rate
- No oversubscription

1x100G




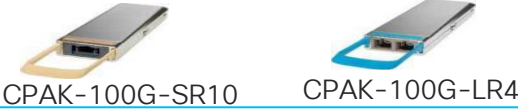




- Line rate
- No oversubscription

1x100G

1x100G

- 2 to 1 oversubscription

# Ethernet Port Adapter (EPA)

EPA	Modular Chassis with MIP-100	ASR1002-HX	Optics Modules
EPA-QSFP-1X100GE 	XE 16.9.1 (MACSec)	XE 16.9.1 (MACSec)	MMF, SMF, SR, LR, ER, -S Class transceivers
EPA-1x40GE EPA-2x40GE 	XE 16.6.2 XE 16.8.1 (MACSec)	XE 16.6.2 XE 16.8.1 (MACSec)	MMF, SMF, SR, LR, ER, -S Class transceivers
EPA-1x100GE 	XE 3.16.1 XE 16.2.1	XE 16.4.1	 CPAK-100G-SR10      CPAK-100G-LR4
EPA-CPAK-2x40GE 	XE 3.16.2 XE 16.3.1	XE 16.4.1	 CPAK-100G-SR10      CAB-MPO24-2XMPO12      QSFP-40G-SR4
EPA-10x10GE 	XE 3.16.4 XE 16.2.1 XE 16.3.1 (MACSec)	XE 16.3.1 XE 16.3.2 (MACSec)	SFP-10G-SR, SFP-10G-SR-X, SFP-10G-LR, SFP-10G-LRM, SFP-10G-LR-X, SFP-10G-ER
EPA-18x1GE 	XE 16.2.1 XE 16.3.2 (MACSec)	XE 16.2.1 XE 16.3.1 (MACSec)	GLC-GE-100FX, GLC-SX-MMD, GLC-LH-SMD, SFP-GE-T, GLC-BX-U, GLC-BX-D, GLC-TE, GLC-SX-MM, GLC-LH-SM, GLC-EX-SMD, GLC-ZX-SMD, CWDM-SFP, DWDM-SFP

# Modular Route Processors: RP2 & RP3

RP2



RP3



30%+  
Faster!

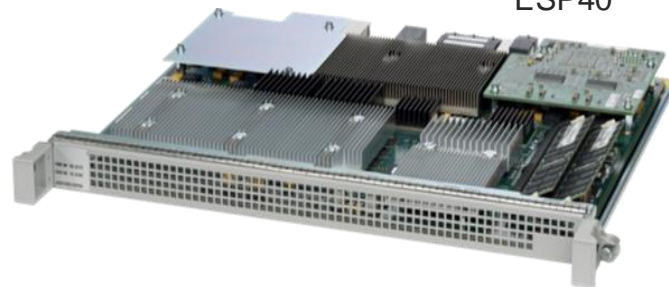
60%+  
Scale!

CPU	2.66GHz Intel Xeon Dual-core	2.2GHz Intel Broadwell Quad-core
Default memory	8GB (4x2GB) - DDR2	8GB (2x4GB) - DDR4
Memory upgrade options	16GB (4x4GB)	16GB (2x8GB), 32GB (4x8GB); 64GB (4x16GB)
Built-In eUSB Bootflash	2GB	8GB
Storage	80GB HDD external USB	100GB SSD default, 200GB and 400GB upgrade options external USB
IOS XE OS	64 bits	64 bits
Chassis Support	ASR 1004 ASR 1006 ASR 1013 ASR 1006-X ASR 1009-X	ASR 1006-X ASR 1009-X ASR 1013

# ASR1000 Embedded Services Processor (ESP)

- Centralized, programmable, multiprocessor forwarding engine providing full-packet processing
- Packet Buffering and Queuing/Scheduling (BQS)
  - For output traffic to carrier cards/SPAs/EPAs
  - For special features such as traffic shaping, reassembly, replication, punt to RP, cryptography, etc.
  - 5 levels of HQoS scheduling, up to 464K Queues, Priority Propagation
- Dedicated crypto co-processor
- Interconnect providing data path links (ESI) to/from other cards over midplane
  - Transports traffic into and out of the Cisco Quantum Flow Processor (QFP)
  - Input scheduler for allocating QFP BW among ESIs
- FEC CPU manages QFP, crypto device, midplane links, etc.

ESP40



ESP100





# ESP Bandwidth

- Overall throughput is determined by the type of ESP and SIPs used in modular platforms.
- Modular platforms are rate limited by speed of bus from QFP complex to backplane ASIC
- Bandwidth is expressed in terms of aggregated throughput, use ESP100 as example:



- 50G Unicast in each direction
- Total Output bandwidth  $50+50=100$



- 50Gbps Unicast in one direction and 70Gbps Unicast in the other direction
- Total output bandwidth ( $50+70=120$ ) exceeds 100Gbps; only 100Gbps will be forwarded.



- 10G Multicast with 8X replication in one direction
- 20G unicast in the other direction
- Total Output bandwidth  $80+20=100G$



- 10Gbps Multicast with 10X replication in one direction
- 10Gbps Unicast in the other direction
- Total bandwidth ( $100+20=110$ ) exceeds 100Gbps; only 100 Gbps will be forwarded

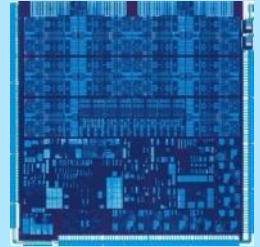


# Cisco Quantum Flow Processor (QFP)

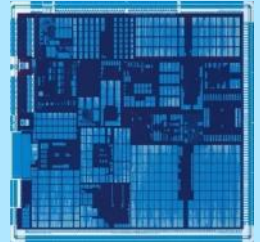
## ASR1000 series innovation

- Five year design and continued evolution – now on 3<sup>rd</sup> generation
- Architected to scale to > 100Gbps
- Multiprocessor with 64 multi-threaded cores; 4 threads per core
- 256 processes per chip available to handle traffic
- High-priority traffic is prioritized
- Packet replication capabilities for Multicast
- Many H/W assists for accelerated processing
- 3<sup>rd</sup> generation QFP is capable for 70Gbps, 32Mpps processing
- Mesh-able: 1, 2 or 4 chips to build higher capacity ESPs
- Latency: tens of microseconds with features enabled

## QFP Chip Set







Cisco QFP  
Packet Processor



Cisco QFP Traffic Manager  
(Buffering, Queueing, Scheduling)

# ASR 1000 Fixed Chassis Overview

	ASR 1001-X	ASR 1002-X	ASR 1001-HX	ASR 1002-HX
				
SPA Slots	1	3	N/A	N/A
EPA Slots	N/A	N/A	N/A	1
NIM Slots	1	N/A	N/A	1
Built-In GE	6	6	8	8
Built-In TenGE	2	N/A	4 + 4 (configurable 10GE/GE)	8
CPU	2.0GHz quad-core	2.13GHz quad-core	2.5GHz quad-core	2.5GHz quad-core
Memory	8GB; upgradable to 16GB	4GB; upgradable to 8GB/16GB	8GB; upgradable to 16GB	16GB; upgradable to 32GB
Storage	eUSB(8GB) SSD (200GB, 400GB)	eUSB(8GB) Optional HDD (160GB)	eUSB(32GB)	eUSB(32GB) SSD (200GB, 400GB)
IOS Redundancy	Software	Software	Software	Software
Height	1.75" (1RU)	3.5" (2RU)	1.75" (1RU)	3.5" (2RU)
Throughput	2.5 to 20Gbps	5 to 36Gbps	60Gbps	100Gbps
Maximum Output Power	250W	470W	360W	500W
Airflow	Front to back	Front to back	Front to back	Front to back

# ASR 1001-HX

## Control plane

- CPU: Quad Core @ 2.5 GHz
- Memory: 8GB DDR3 default memory, upgradeable to 16GB
- Secure Boot + Image Signing

## Pay as you grow

- License on built-in ports
- 4x TenGE+ 4xGE enabled by default
- The remaining ports can be enabled in pairs

## Multi-Core Network Processor

- 60Gbps forwarding capacity
- 62 Cores
- 4 HW Threads / Core
- 248 simultaneous threads

## Miscellaneous

- RJ45 & mini-USB console
- eUSB: 32GB



## Built in I/O

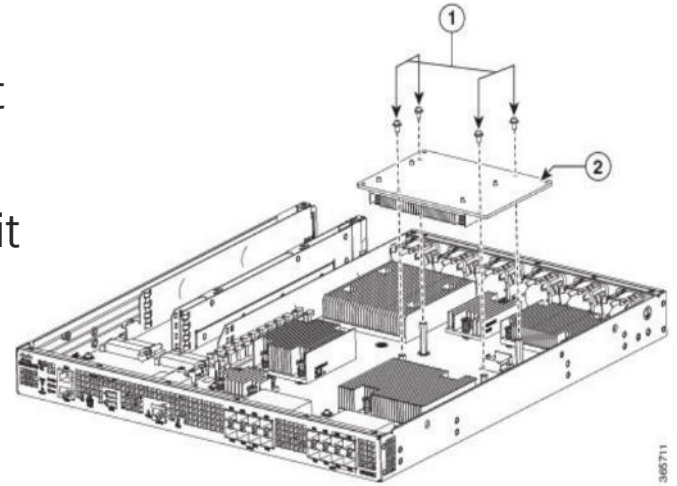
- 8x Gigabit Ethernet interfaces
- 8x TenGigabit Ethernet interfaces (4 configurable 10G/1G ports)
- Multipoint MACSEC for linerate encryption (1G & 10G)

## Crypto module

- Field upgradeable
- 16 Gbps crypto throughput
- Suite B support

# ASR 1001-HX Crypto Module

- ASR 1001-HX can be ordered with or without the crypto module
- Crypto module can be installed in the field unit when it need the function
- Crypto bandwidth licensed from factory (default 8Gbps, upgradeable to 16Gbps on demand)
- 16Gbps crypto license unlocks crypto performance cap of 29Gbps (1400bytes)



1	Screws	2	Crypto module
---	--------	---	---------------

# ASR 1002-HX

## Pay as you grow

- License on built-in ports
- 4x TenGE+ 4xGE enabled by default
- The remaining ports can be enabled in pairs

## Control plane

- CPU: Quad Core @ 2.5 GHz
- Memory: 16GB DDR3 default memory, upgradeable to 32GB
- Secure Boot + Image Signing

## Power Supply & Fans

- Modular PS, FRUable
- Fan Tray

## Built in I/O

- 8x Gigabit Ethernet interfaces
- 8x TenGigabit Ethernet interfaces
- Multipoint MACSEC for linerate encryption (1G & 10G)

## Multi-Core Network Processor

- 100 Gbps forwarding capacity
- 124 Cores
- 4 HW Threads / Core
- 496 simultaneous threads

## Miscellaneous

- RJ45 & mini-USB console
- eUSB: 32GB

## Network Interface Module

- 1 double wide or 1 single wide NIM



## Ethernet Port Adapter

- 1x EPA slot

## Crypto module

- Field upgradeable
- 25 Gbps crypto throughput
- Suite B support

# ASR 1002-HX Crypto Module

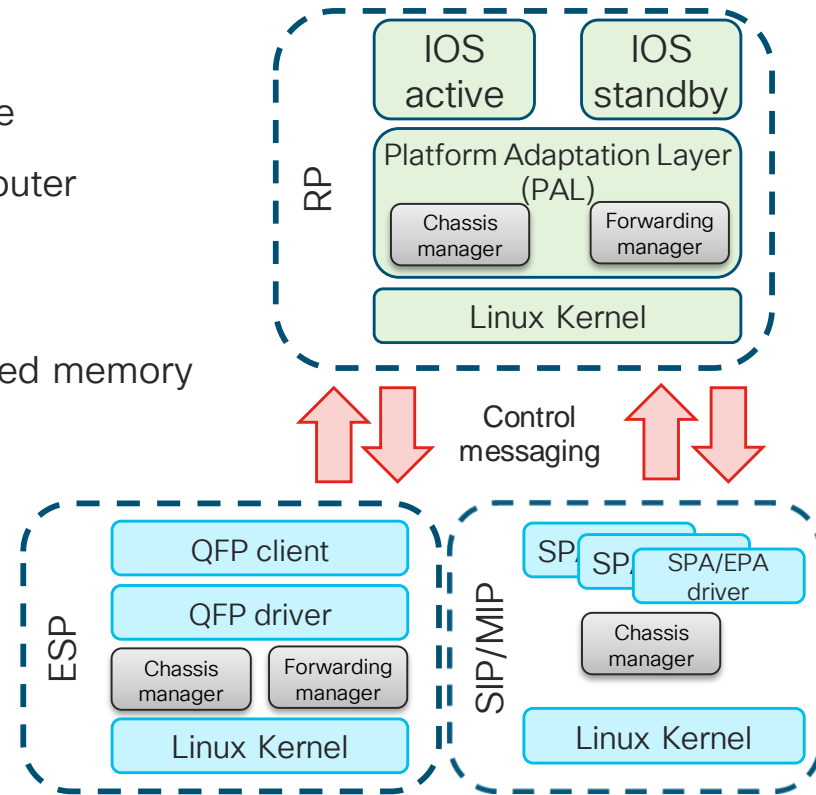
- ASR 1002-HX can be ordered with or without the crypto hardware
- Crypto module can be installed in the field unit when it need the function
- Crypto bandwidth licensed from factory (default 8Gbps, upgradeable to 16Gbps and 25Gbps on demand)
- 25Gbps crypto license unlocks crypto performance cap of 39Gbps (1400bytes)
- ASR 1002-HX must be powered down to install/remove crypto module



# Software Architecture

# IOS XE Software architecture

- IOS XE = IOS + IOS XE Middleware + Platform Software
- Operational Consistency—same look and feel as IOS Router
- IOS runs as its own Linux process for control plane (Routing, SNMP, CLI etc.) 64-bit operation
- Linux kernel with multiple processes running in protected memory
  - Fault containment
  - Re-startability
  - ISSU of individual SW packages
- ASR 1000 HA Innovations
  - Zero packet loss with RP Failover
  - <50ms ESP Failover
  - Software redundancy

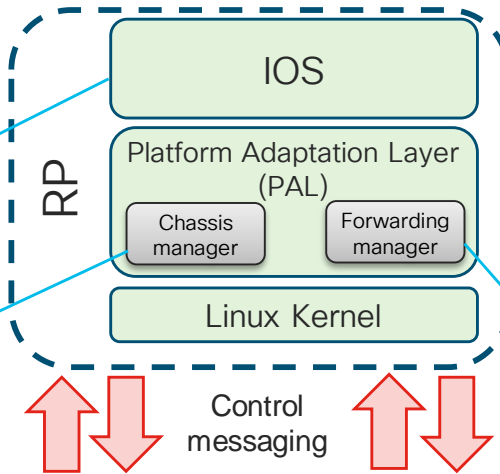




# Software Architecture - Modular Platform

- Runs Control Plane
- Generates configurations
- Maintains routing tables (RIB, FIB...)

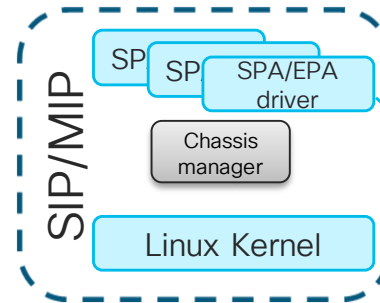
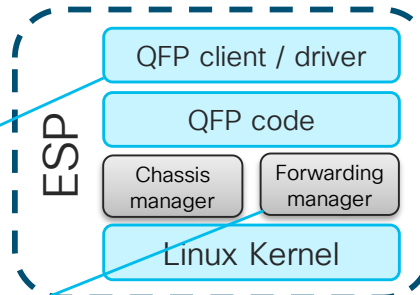
- Initialization of RP processes
- Initialization of installed cards
- Detects and manages OIR of cards
- Manages system status, environments, power, EOBC



- Provides abstraction layer between hardware & IOS
- Manages ESP redundancy
- Maintains copy of FIB and interface list
- Communicates FIB status to active & standby ESP

- Programs QFP forwarding plane and QFP DRAM
- Statistics collection & RP communication

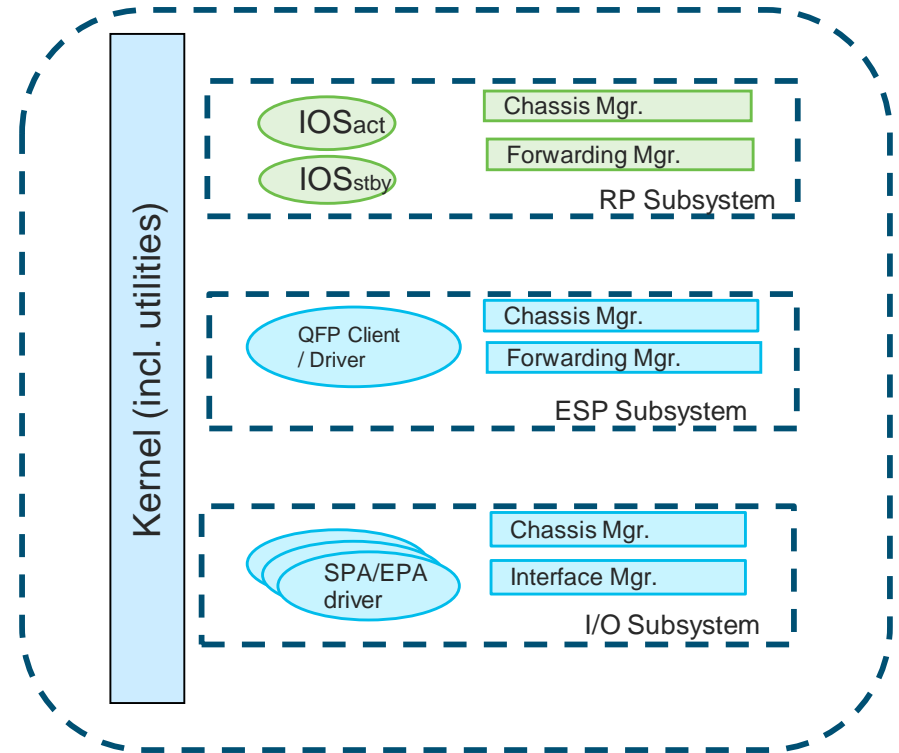
- Communicates with forwarding manager on RP
- Maintains copy of FIBs
- Provides interface to QFP client & driver



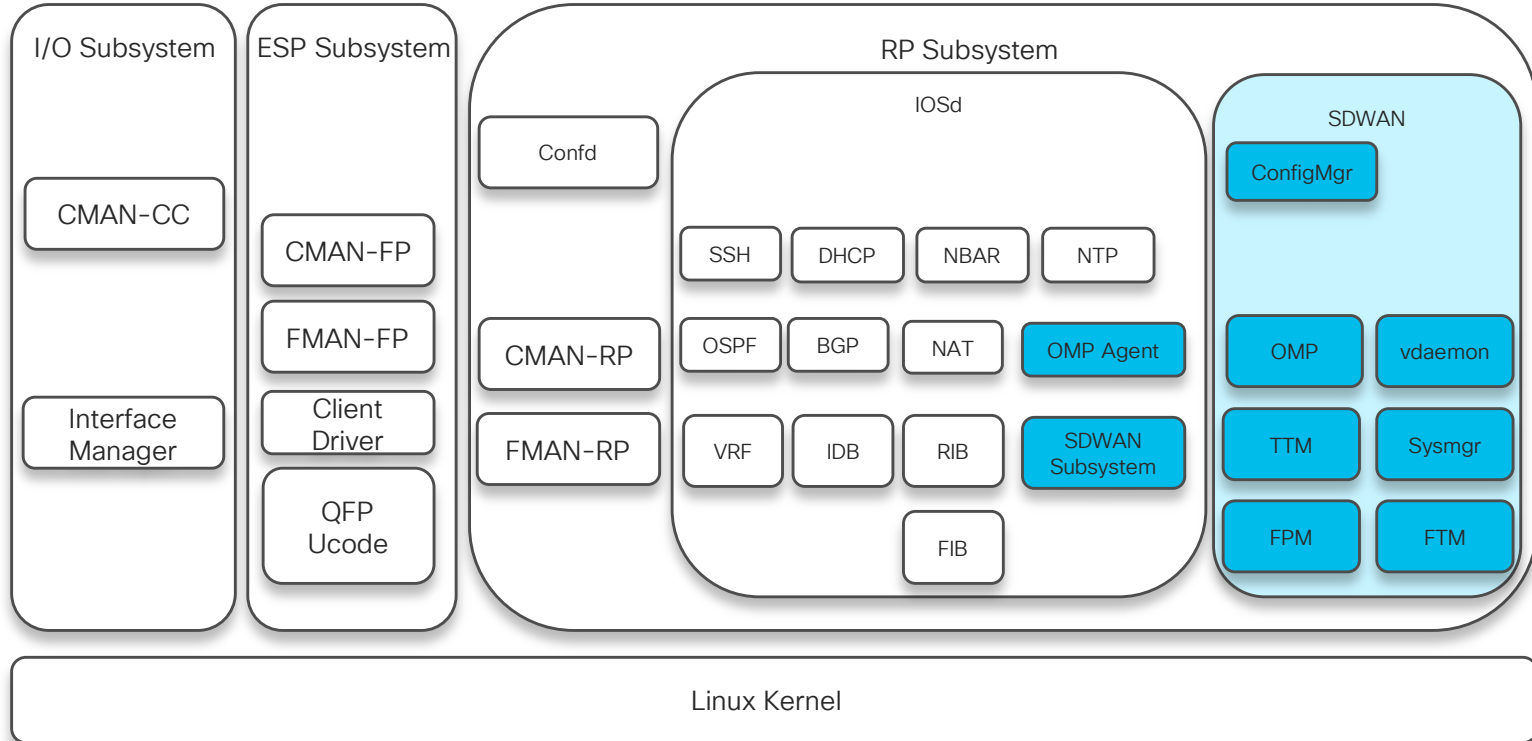
- Driver Software for SPA/EPA interface cards is loaded independently
- Failure or upgrade of driver does not affect other SPAs/EPAs in the chassis

# Software Architecture – Fixed Platform

- Single Control CPU
  - Quad-core
  - 64 bit OS
  - 8GB, 16GB, 32GB memory support
- Standard IOS XE Processes
  - Running over a single Linux kernel
- High Availability
  - IOS redundancy
  - Fault Containment
  - Process Restartability
- Operational Consistency
  - Same look and feel as standard IOS
- Ethernet Out of Band Channel
  - Method by which processes in different subsystems communicate

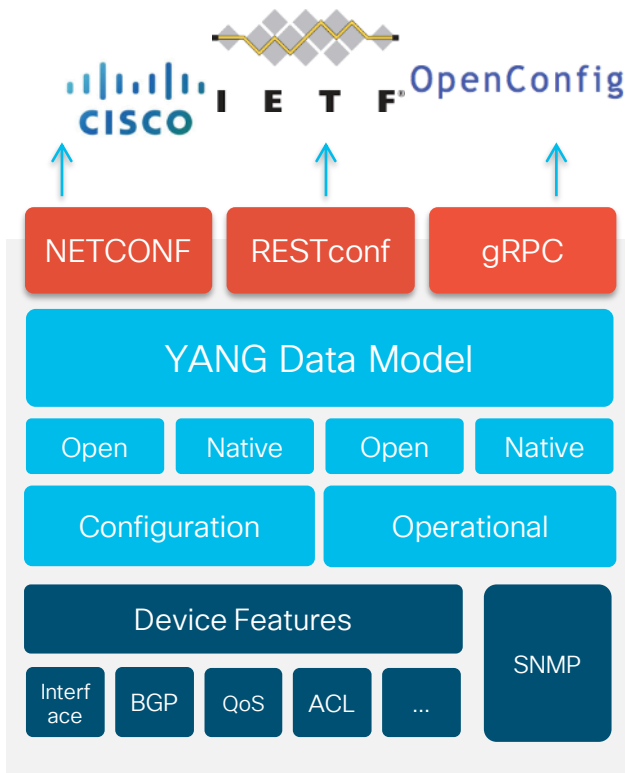


# XE SD-WAN Software Architecture



# IOS XE Software Innovation

## Programmable Interface “Stack”



The screenshot shows the GitHub repository for YangModels / yang. The repository has 173 Watchers, 509 Stars, and 372 Forks. The commit history is displayed, showing a list of commits with their messages and dates. The most recent commit is by apoorvashastry and einarnn, adding a tailf-cli-extensions model to resolve pyang errors. The commit history includes:

Commit ID	Message	Time
16101	Added tailf-cli-extensions model to resolve pyang errors. (#499)	9 days ago
1631	Added Platform.metadata.json file under all releases. (#334)	11 months ago
1632	Added Platform.metadata.json file under all releases. (#334)	11 months ago
1641	Added Platform.metadata.json file under all releases. (#334)	11 months ago
1651	minor issues fixed	9 months ago
1661	minor issues fixed	9 months ago
1662	minor issues fixed	9 months ago
1671	minor issues fixed	9 months ago
1681	Added backwards compatibility checking to 16.8.1 check-models script	5 months ago
1691	Added tailf-cli-extensions model to resolve pyang errors. (#499)	9 days ago
README.md	Updated with master	2 years ago
check.sh	Added Cisco-IOS-XE-16.10.1 Release Yang models (#497)	13 days ago

<https://github.com/YangModels/yang/tree/master/vendor/cisco/xe>

# IOS XE Software Innovation

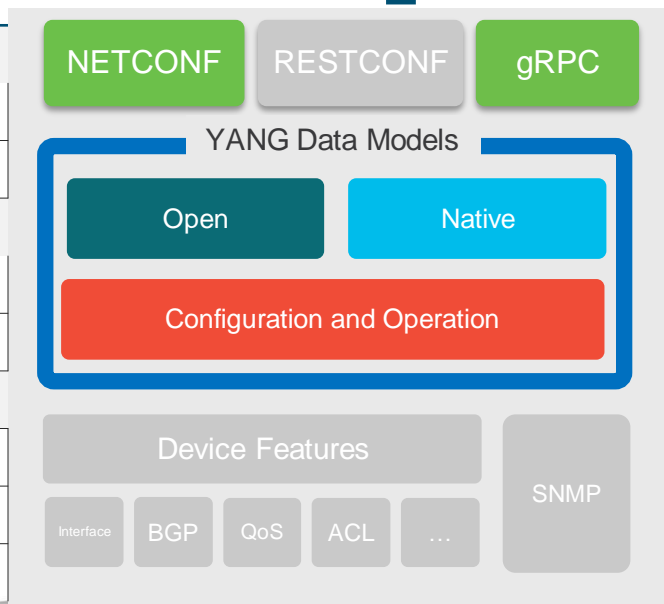
## Telemetry

NETCONF Dial-In  
16.6.1

gRPC Dial-Out  
16.10.1

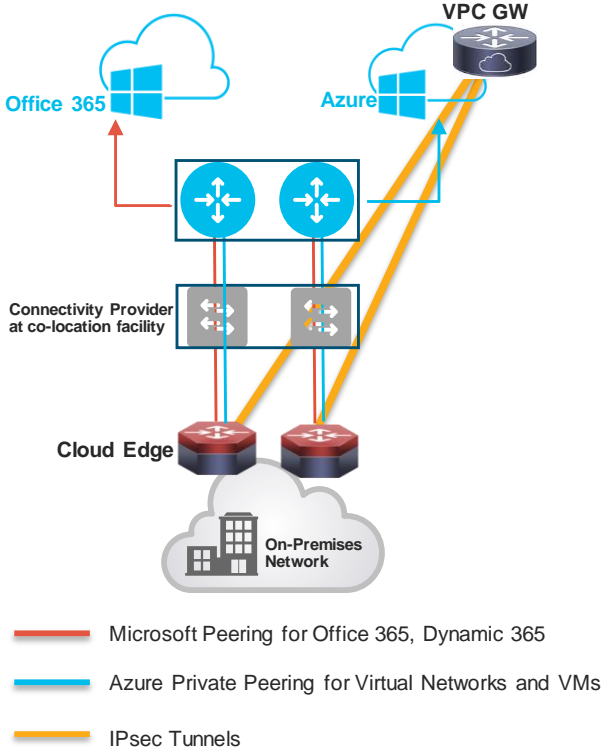


Subscriptions		
Type	Dynamic	Configured
Method	ietf-yangpush.yang	ietf-yangpush.yang
Publication Transport Protocol		
NETCONF	✓	
gRPC		✓
Notifications		
Periodic	✓	
On-Change	✓ (model dependent)	
License	Network Essentials or Cisco DNA Essentials	



# Applications & Solutions

# Cloud Edge to Microsoft Azure via ExpressRoute



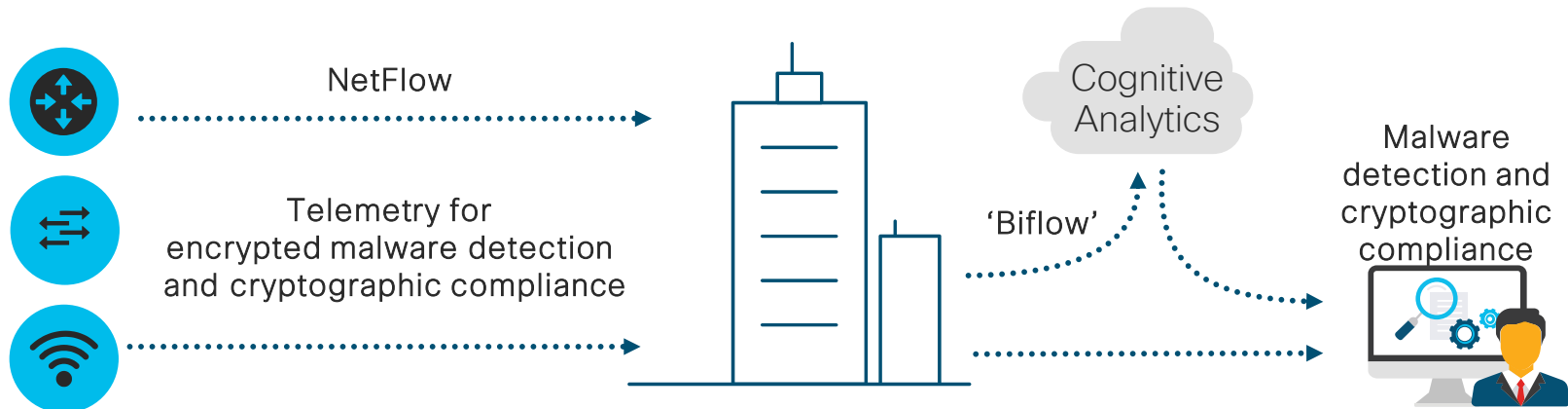
- ExpressRoute: Private, dedicated, high-throughput network connection between on-premises and Microsoft Azure.
- Cisco and Microsoft have partnered to help you efficiently transition to the cloud with Microsoft Azure ExpressRoute and [Cisco Solution Support](#).
- Create a [joint-validated design guide](#) featuring
  - The steps required to extend an on premise network into the ExpressRoute using ASR 1000.
  - Best practices for high availability, optimized routing, NAT and network security.
  - Validation of solution compatibility, connectivity, and correct operation for the on premise deployment from Cisco.

# Encrypted Traffic Analytics (ETA)

Find malicious activity hidden in encrypted traffic

Network Devices

Cisco Stealthwatch



Leveraged network

Faster investigation

Higher precision

Stronger protection

Enhanced NetFlow from Cisco's routers (ASR, ISR, CSR) and switches

Enhanced analytics and machine learning

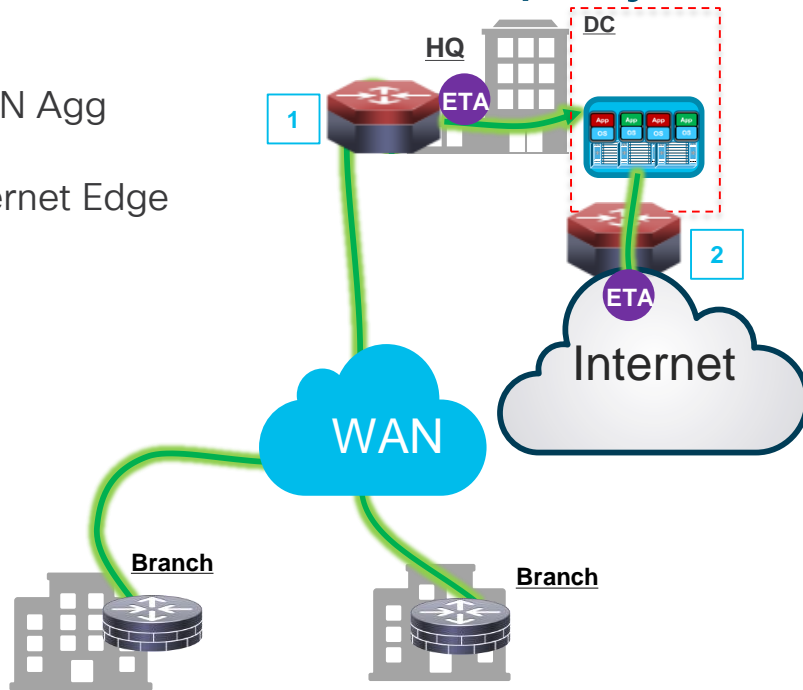
Global-to-local knowledge correlation

Continuous Enterprise-wide compliance



# ASR 1000 ETA Deployment Models

- 1 WAN Agg
- 2 Internet Edge



## Miercom Report

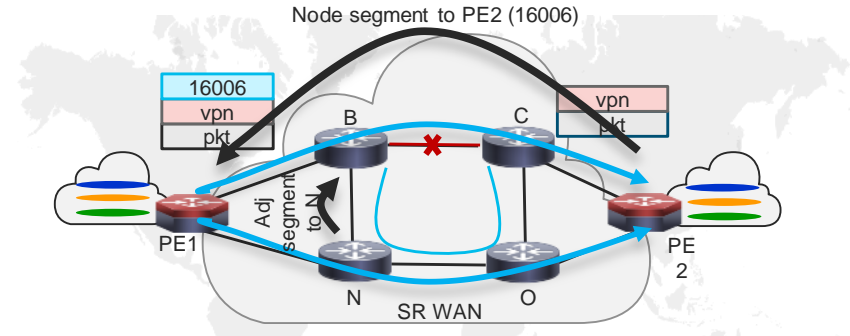
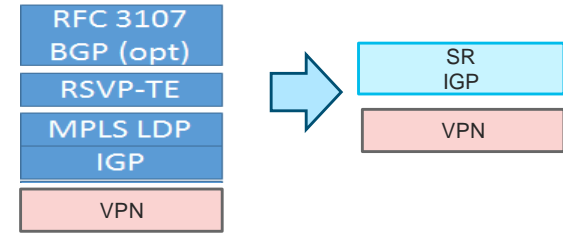
- “Cisco ETA showed as much as 36 percent higher rates of detection than the non-ETA system, finding 100 percent of threats within three hours.”
- “An enterprise no longer has to wait months to discover encrypted breaches. Cisco ETA can deliver detection and remediation in just a few hours. “
- “With ETA enabled, malicious flows are detected with speed and increased accuracy over time.”

<https://www.cisco.com/c/dam/en/us/td/docs/solutions/CVD/Campus/CVD-Encrypted-Traffic-Analytics-Deployment-Guide-2018AUG.pdf>

# Segment Routing

## Simplifying the Transport

- Source Routing: the source chooses a path and encodes it in the packet header as an ordered list of segment
- Segment: an identifier for any type of instructions forwarding or service
- IGP only: no LDP, no RSVP-TE
- ECMP
- Interworking with LDP: ease of migration
- Topology independent Loop Free Alternate
- Support all existing VPN services
- Engineered for SDN



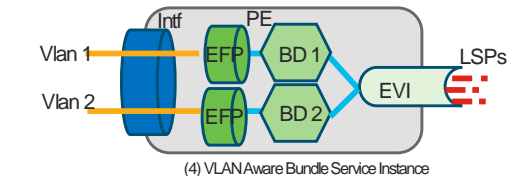
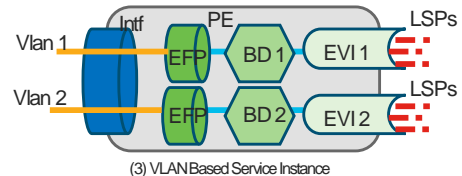
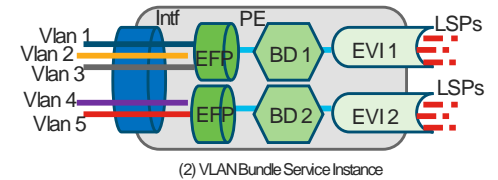
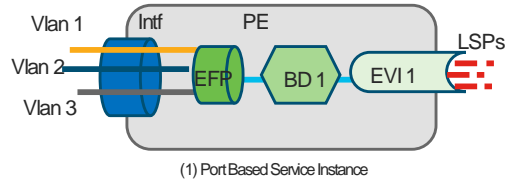
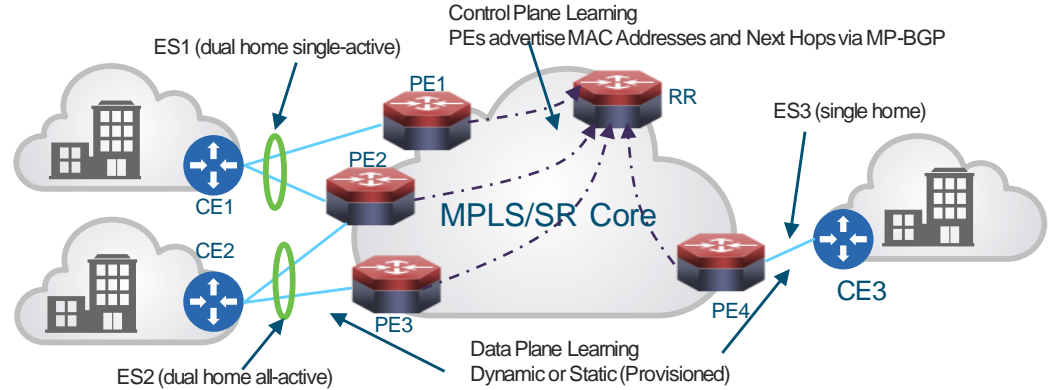
# Segment Routing - Making WAN Simple

- Use Case 1: Basic Segment Routing in WAN core with MPLS services
- Use case 2: Single-level/area manual SRTE in WAN core with MPLS services
- Use case 3: Multi-area SRTE in WAN core with MPLS services
- Use case 4: On-demand next-hop (ODN) for L3 VPN & L2 VPN
- Use case 5: PCE instantiation of SRTE tunnels in WAN core with MPLS services

<https://www.cisco.com/c/en/us/solutions/design-zone/cisco-validated-profiles.html#branch>

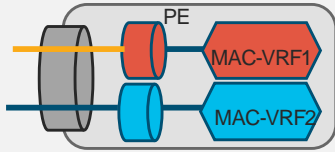
# Ethernet VPN - NG L2VPN Solution

- Scale - Control Plane Address Learning in Core
- Simple – Auto Discovery and Easy Provisioning
- Resiliency - Active-Standby Multi-homing, All-Active Multi-homing
- Rich Services - vlan-based, vlan bundle, vlan-aware bundle
- ASR1k Scale:
  - EVIs – 4k
  - BD – 4k
  - MACs per BD: 64k
  - MACs per box: 256k



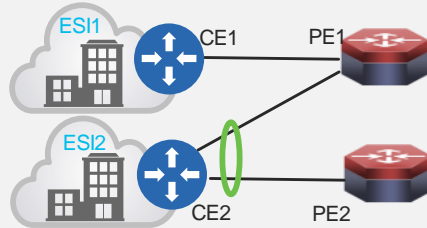
# EVPN Components

## EVPN Instance (EVI) & MAC-VRF



- EVI identifies a VPN in the network
- MAC-VRF: A VRF table for MAC addresses on a PE
- Encompass one or more bridge-domains, depending on service interface type:
  - Port Based Service Interface
  - VLAN Based Service Interface
  - Vlan Bundle Service Interface
  - Vlan-Aware Bundle Service Interface

## Ethernet Segment



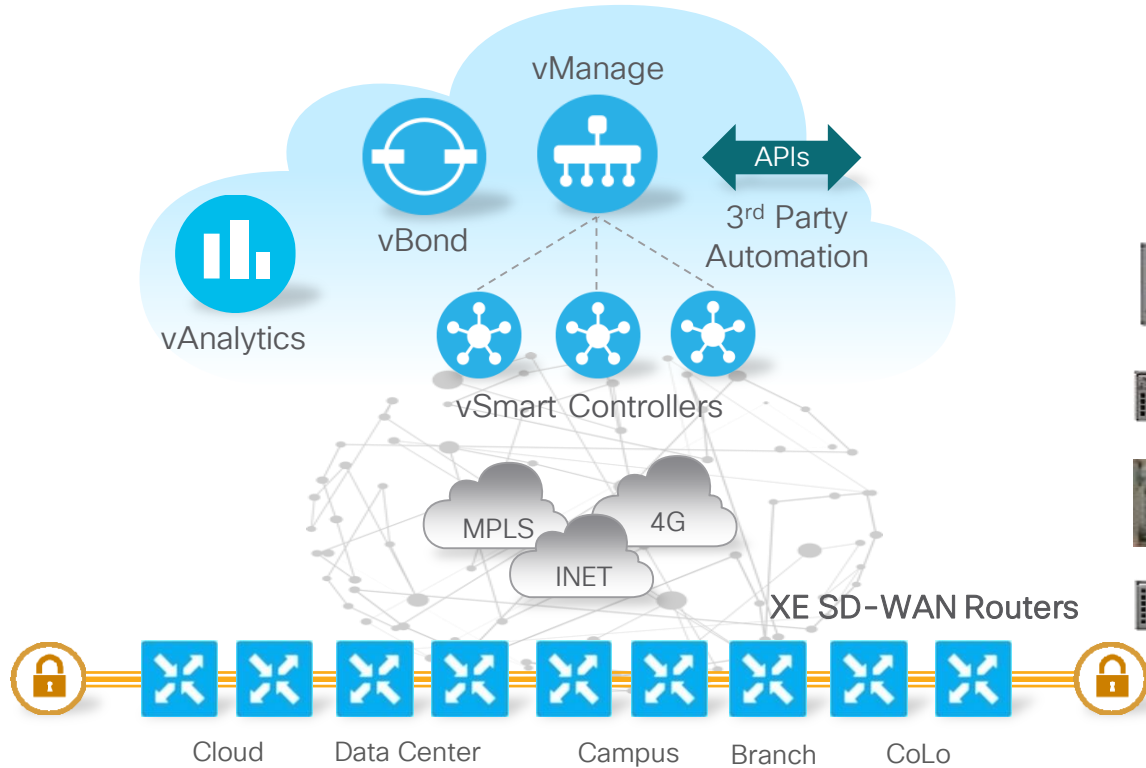
- ES: Represents a site (device or network) is connected to one or more PEs via a set of Ethernet links, then that set of links is referred to as an Ethernet Segment
- Could be
  - Single-Homed Device (SHD)
  - Multi-homed Device (MHD)
  - Single-homed Network (SHN)
  - Multi-Homed Network (MHN)

## BGP NLRI & Communities

Route Types	Extended Communities
[1] Ethernet AD Route	ESI Label
[2] MAC Advertisement Route	ES-Import RT
[3] Inclusive Multicast Route	MAC Mobility
[4] Ethernet Segment Route	Default Gateway
[5] IP Prefix Route	

- AFI 25 (L2VPN), SAFI 70 (EVPN)
- Purposes:
  - MAC address reachability
  - MAC mass withdraw
  - Split-Horizon label adv
  - Aliasing
  - Multicast endpoint discovery
  - Redundancy group discovery
  - Designated forwarder election
- Carry information:
  - MAC address moves
  - C-MAC flush notification
  - Redundancy mode
  - MAC / IP bindings of GW
  - Split-Horizon label encoding

# XE SD-WAN on ASR 1000



ASR1002-HX



ASR1001-HX



ASR1002-X



ASR1001-X

# ASR 1000 managed by vManage

FYI

The screenshot displays the Cisco vManage interface for monitoring a WAN TLOC. The top navigation bar shows 'Cisco vManage' and the user 'admin'. The main content area is titled 'MONITOR Network > WAN - TLOC'. A green circle highlights the 'Device Model: ASR1001-HX' text. Below this, there are two line charts for 'Latency' and 'Jitter' over time, with a legend for 'met-eth', 'mpls', and 'public-internet'. A table below the charts shows the status of these connections.

	Local Color	State	Jitter (ms)	Loss (%)	Latency (ms)
✓	met-eth	↑	0.04	0.02	0.03
✓	mpls	↑	0.04	0.02	0.04
✓	public-internet	↑	0.04	0.02	0.03

# Conclusion



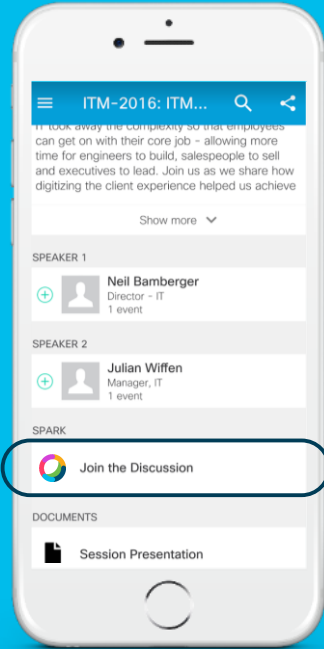
# Agenda

- Introducing the ASR 1000
- ASR 1000 System Architecture
- ASR 1000 Software Architecture
- Applications & Solutions
- Conclusion

# Summary and Key Takeaways

- ASR 1000 is the **Swiss Army Knife** to solve your tough network problems
- **Reduce complexity** in your network edge.
- ASR 1000 is well positioned for both **Enterprise** and **Service Provider** Architectures.
- ASR 1000 is fully embedded in the **Cisco Digital Network Architecture**





[cs.co/ciscolivebot#BRKARC-2001](https://cs.co/ciscolivebot#BRKARC-2001)

# Cisco Webex Teams

## Questions?

Use Cisco Webex Teams (formerly Cisco Spark) to chat with the speaker after the session

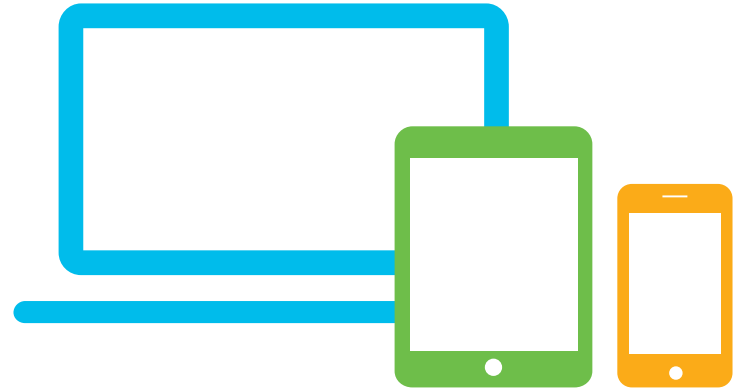
## How

- 1 Find this session in the Cisco Events Mobile App
- 2 Click “Join the Discussion”
- 3 Install Webex Teams or go directly to the team space
- 4 Enter messages/questions in the team space

# Complete your online session survey

- Please complete your Online Session Survey after each session
- Complete 4 Session Surveys & the Overall Conference Survey (available from Thursday) to receive your Cisco Live T-shirt
- All surveys can be completed via the Cisco Events Mobile App or the Communication Stations


Don't forget: Cisco Live sessions will be available for viewing on demand after the event at [cislive.cisco.com](https://cislive.cisco.com)




# Continue Your Education




Demos in the Cisco Showcase



Walk-in self-paced labs



Meet the engineer 1:1 meetings



Related sessions

# Related Sessions

- LTRARC-3500 - IOS XE (Routers) troubleshooting
- BRKSDN-2666 - IOS XE Architecture for Programmability
- BRKCRS-2811 - Cisco SD-Access - Connecting the Fabric to External Networks
- BRKCRS-1560 - Detect threats in encrypted traffic without decryption, using network based security analytics
- BRKMPL-2118 - Evolving Network Application Use-Cases Using Segment Routing In the Enterprise
- BRKCRS-2110 - Delivering Cisco Next Generation SD-WAN with Viptela



Thank you



INTUITIVE



INTUITIVE