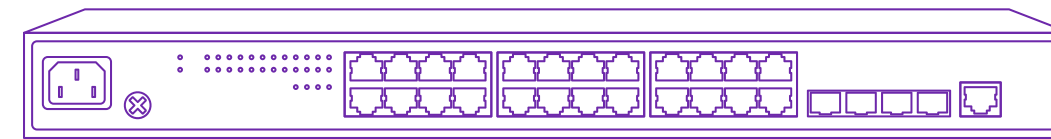




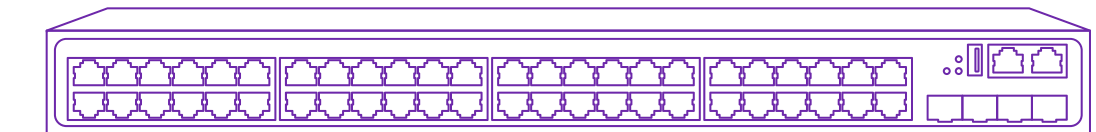
Switching equipment

# Upgrade to Gigabit with SNR Switches

## Access Layer



SNR-S5110G-24TX  
SNR-S5210G-24TX  
SNR-S5310G-48TX

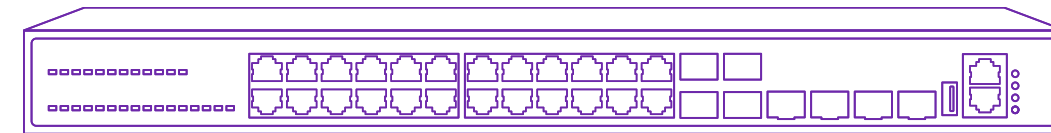


SNR-S2982G-24TE  
SNR-S2985G-24TC  
SNR-S2985G-48T  
SNR-S2989G-24TX  
SNR-S2989G-48TX

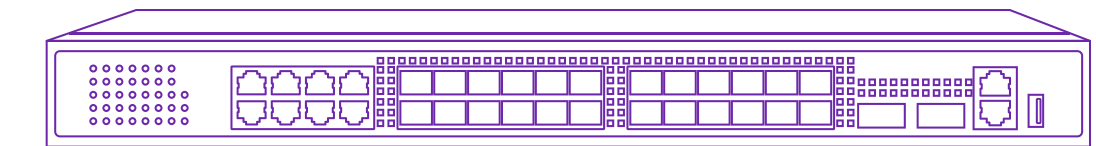
10 GE



## Aggregation Layer



SNR-S2990X-24FQ

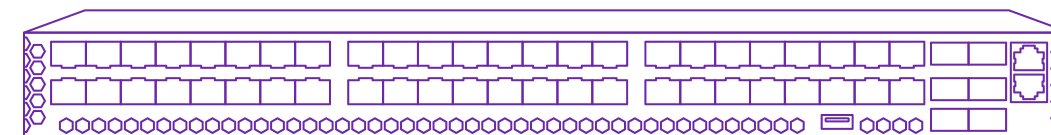


SNR-S300X-24FQ  
SNR-S400X-24FC-2AC

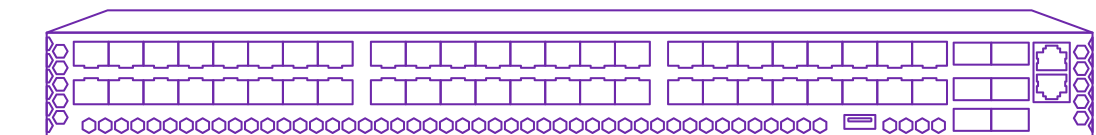
40/100 GE



## Core Layer

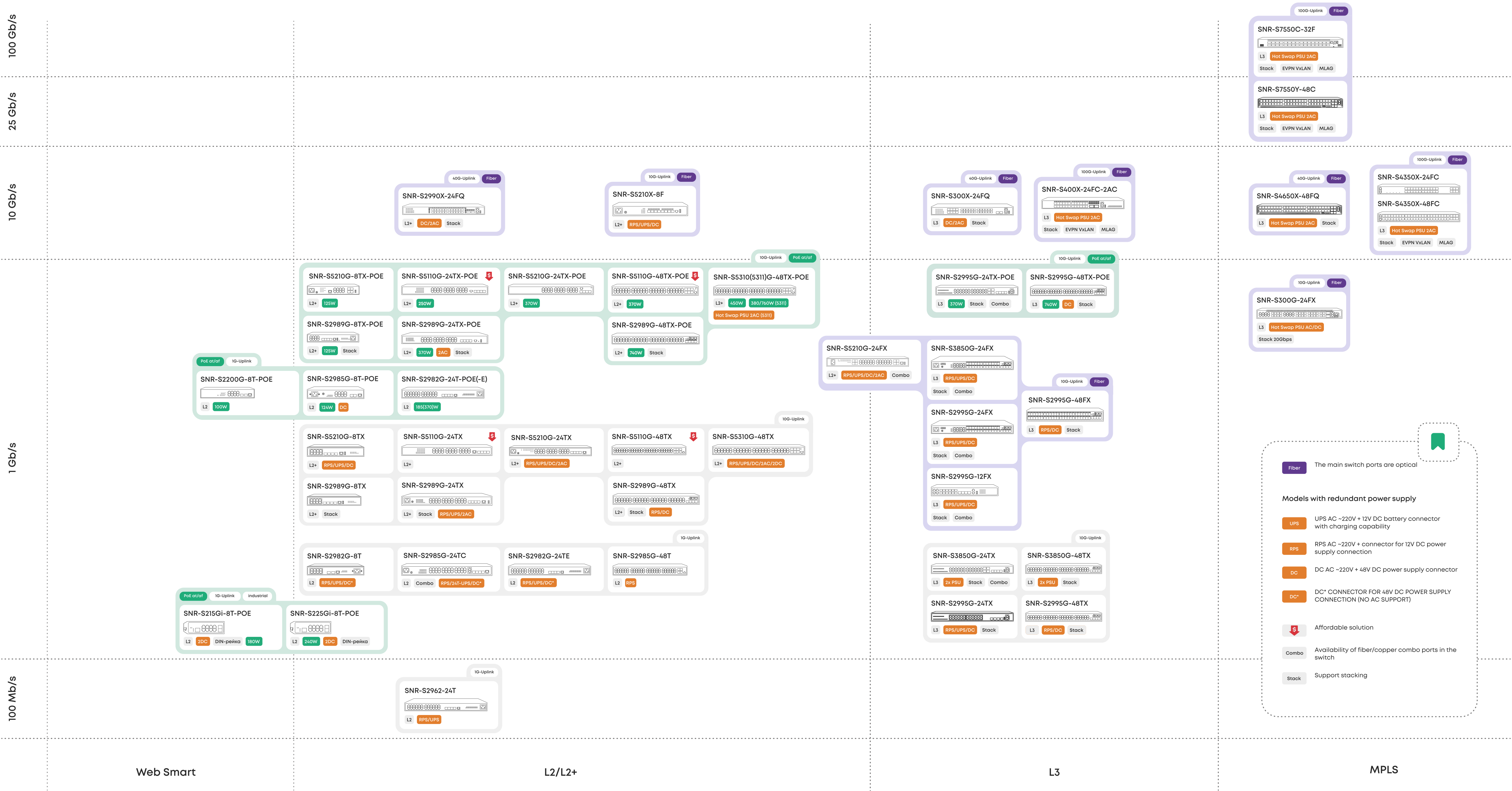


SNR-S4350X-24FC  
SNR-S4350X-48FC  
SNR-S4650X-48FQ



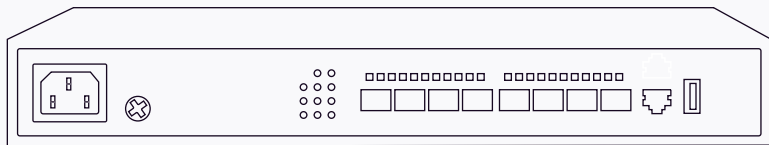
SNR-S7550Y-48C  
SNR-S7550C-32F

# Switch Product Line

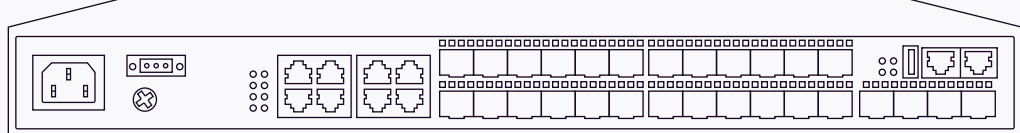


# SNR Aggregation Layer Switches

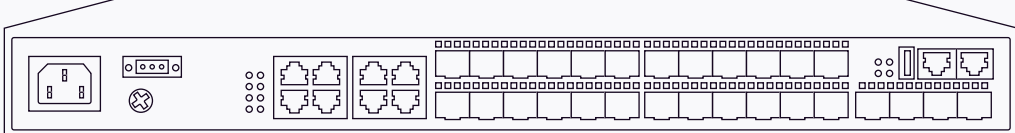
The switches are available in several product lines with varying functionality, port configurations, and use cases.



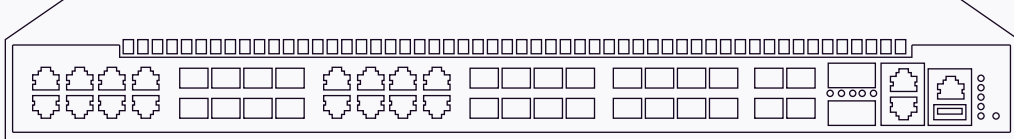
**S5210**  
L2+ Switch Series with Static Routing Support and Power Redundancy for Fault-Tolerant Networks



**S2995G**  
Stackable L3 Switch Series supporting dynamic routing up to 1K IPv4 routes, including multicast traffic routing



**S3850G**  
Stackable L3 Switch Series with a dual-core processor. Features combo ports and supports dynamic routing up to 13K IP routes and 4K ARP entries.



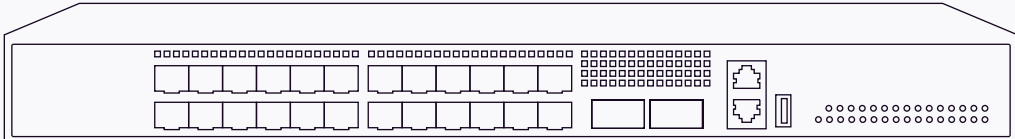
**S300G-24FX**  
L3 Switch based on Broadcom Helix 4 with Hot Swap AC/DC PSUs, dedicated stacking ports, MPLS support, 64K MAC, 48K ARP, and 16K IP routes.



**S2990X-24FQ**  
Stackable 10GE L2+ switch with 1/10GE SFP+ and 40GE QSFP+ ports. Built on a modern Broadcom ASIC, ensuring non-blocking architecture and minimal packet switching latency



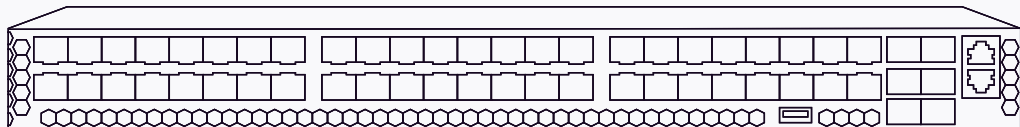
**S300X-24FQ**  
Stackable 10GE L3 switch with 1GE RJ-45, 1/10GE SFP+, and 40GE QSFP+ ports. Supports dynamic routing protocols: OSPF, BGP, RIP, PIM, MSDP. Capable of handing up to 16K IPv4 and 8K IPv6 routes, 16K ARP entries, 4K multicast groups, and 32K MAC addresses.



**S400X-24FC-2AC**  
Universal Aggregation/Core Layer solution featuring 1/10GE SFP+ and 40/100GE QSFP+ ports, Hot Swap PSUs, MLAG support, VxLAN, EVPN-VxLAN, and comprehensive L2/L3 functionality.



**S4350X**  
High-performance L3 aggregation/core switches with 1/10GE SFP+ ports and six 40/100GE QSFP28 ports. Feature Hot Swap PSUs, support MLAG, MPLS, VxLAN, and EVPN-VxLAN — ideal for TOR deployments in data centers.

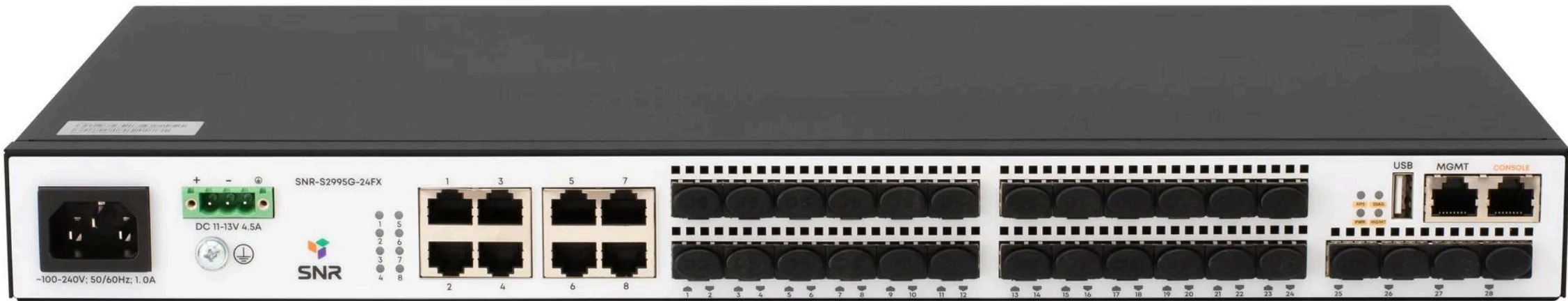


**S4650X-48FQ**  
Stackable L3 switch with 48× 1/10GE SFP+ ports and 6× 40GE QSFP+ ports, hot-swappable power supplies, and full MPLS support along with all necessary high availability features for core or data center networks



**S7550**  
L3 switch series with 10/25GE SFP+ and 40/100GE QSFP28 ports, supporting OSPF, BGP, PIM, MPLS, VXLAN, and MLAG. Designed for core-level deployment in service provider networks and as a Top-of-Rack (ToR) switch in data centers





# S2995G Series

Dynamic routing protocols: OSPF, BGP, PIM

1K IPv4 routes

4K ARP entries

Non-blocking architecture

1/10GE SFP+ uplink ports

Stacking via standard interfaces

AC + RPS 12V / UPS 12V /DC 48V

Compact model with 12x SFP and 4x SFP+ ports

S2995G Series – a proven solution for aggregation and optical access layers in enterprise and carrier networks.

The series offers three port density variants:

- SNR-S2995G-24FX: L2/L3 aggregation switch with 24x GE SFP ports (8x Combo) + 4x 1/10GE SFP+
- SNR-S2995G-48FX: high-density all-optical switch with 48x 1GE SFP + 4x 1/10GE SFP+
- SNR-S2995G-12FX: compact model with 12x 1GE SFP (4x Combo) + 4x 1/10GE SFP+

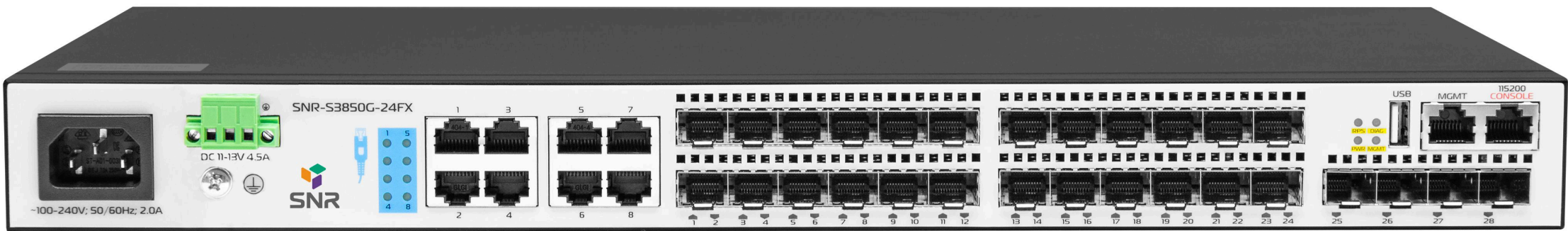
Featuring copper/fiber combo interfaces, 1/10GE SFP+ uplinks, and comprehensive L2/L3 functionality, the S2995G Series delivers versatility for diverse deployments.

Standardized SNR CLI and SNMP MIB ensure seamless integration, while RPS support and AC power monitoring enable cost-effective high-availability power redundancy.

## Key Features

VLAN	4094 VLAN, Voice-VLAN, Private-VLAN, MAC-VLAN, Port-based QinQ, Selective QinQ, VLAN Translation
Interfaces	SNR-S2995G-24FX (-DC   UPS): 16 x 100/1000Base-X SFP, 8 x Combo 10/100/1000Base-T   100/1000Base-X SFP, 4 x 1/10GE SFP+; SNR-S2995G-12FX (-DC   UPS): 8 x 100/1000Base-X SFP, 4 x Combo 10/100/1000Base-T   100/1000Base-X SFP, 4 x 1/10GE SFP+; SNR-S2995G-48FX (-DC): 48 x 100/1000Base-X SFP, 4 x 1/10GE SFP+
MAC Address Table	16K
Security Features	3K ACL rules IP ACL, MAC ACL, MAC-IP ACL, Userdefined ACL Port-Security, IP-MAC-Port binding, DHCP Snooping, DHCP Relay, DHCP Option 82 Broadcast/Multicast/Unicast storm control, Loopback detection, 802.1x, MAB. CPU traffic rate limiting
L3 Features	Static Routing, Dynamic Routing: RIP, OSPFv2/v3, BGPv4+. Multicast Routing: PIM-SM, PIM-DM, PIM-SSM, MSDP. IPv4 Routing Table Capacity: 1K routes
L2-Multicast	IGMPv1/v2/v3 Snooping, Multicast VLAN Replication (MVR), Multicast Source/Destination Control, Multicast Filter
QoS	8 queues per port, DWRR / SP / SP + DWRR, CoS/DSCP marking/remarking, Bandwidth throttling (per-queue/port)
Redundancy Protocols	STP, RSTP, MSTP, ERPS, LACP
Management Features	CLI, WEB, SNMP
Power Redundancy Features	SNR-S2995G-12(24,48)FX: 220V AC + 12V DC, AC Power Monitoring SNR-S2995G-12(24,48)FX-DC: 220V AC + 48V DC, AC Power Monitoring SNR-S2995G-12(24)FX-UPS: 220V AC input + 12V battery connector with charging capability, AC Power Monitoring





# S3850G Series

Dual-core processor

Dynamic routing protocols: OSPF, BGP, PIM

13K IPv4 routes

4K ARP entries

1/10GE SFP+ uplink ports

DDM support on all optical ports

Stacking via standard interfaces

AC + RPS 12V / UPS 12V / DC 48V

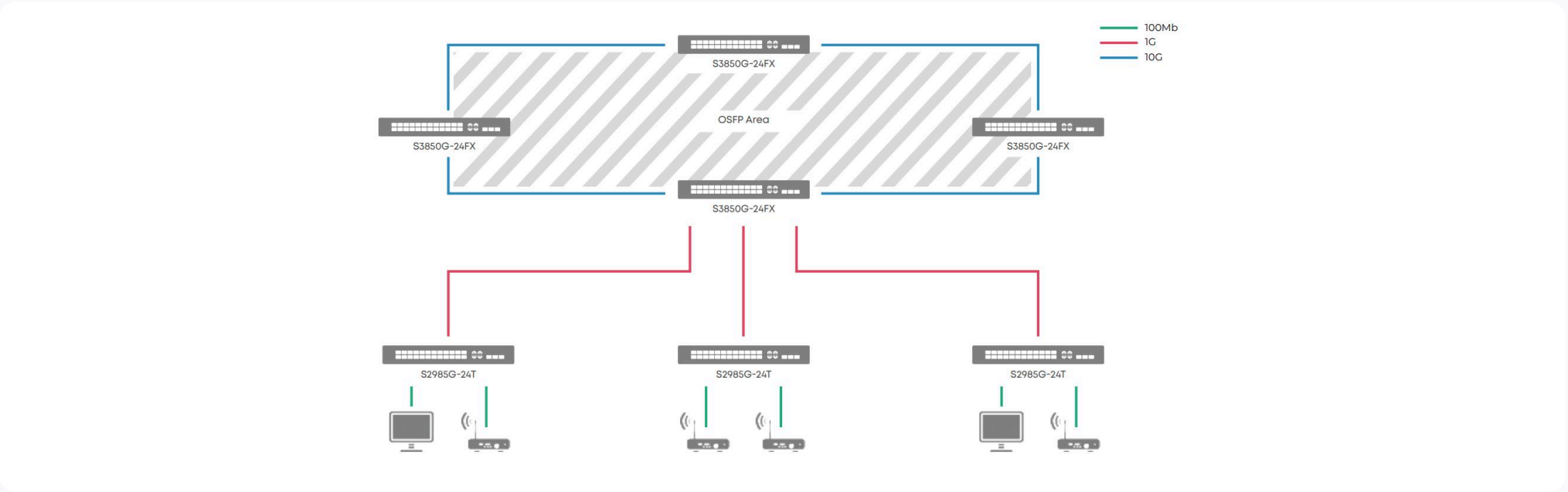
S3850G Series – a high-performance solution for L3 aggregation. This series differs from the S2995G with its increased L3 table size – up to 13K routes and 4K ARP entries. The models feature 4x 1/10GE SFP+ uplink ports, 16x 1GE SFP, and 8x 1GE Combo ports.

The combination of optical and copper interfaces, 1/10GE SFP+ uplink ports, and L2/L3 functionality makes the S3850G Series switches an excellent solution for a wide range of tasks.

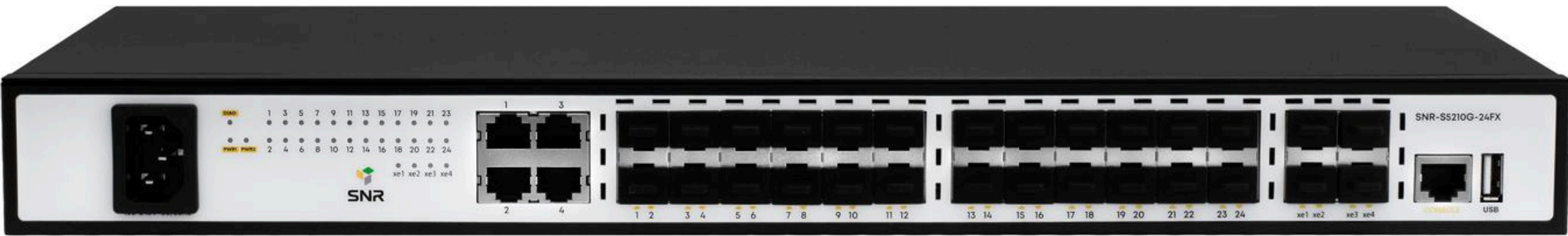
The S3850G Series switches also feature the standard SNR CLI and SNMP MIB, simplifying deployment and maintenance. The presence of an RPS port and AC power monitoring ensures uninterrupted power supply with extended battery life and minimal costs. The SNR-S3850G-24FX-UPS model includes a built-in 12V battery charge/discharge controller supporting capacities up to 50Ah.

## Key Features

VLAN	4094 VLAN, Voice-VLAN, Private-VLAN, MAC-VLAN, Port-based QinQ, Selective QinQ, VLAN Translation
Interfaces	16 x 100/1000Base-X SFP, 8 x Combo 10/100/1000Base-T   100/1000Base-X SFP, 4 x 1/10GE SFP+
MAC Address Table	16K
ARP Table	4K
Security Features	3K ACL rules IP ACL, MAC ACL, MAC-IP ACL, Userdefined ACL Port-Security, IP-MAC-Port binding, DHCP Snooping, DHCP Relay, DHCP Option 82 Broadcast/Multicast/Unicast storm control, Loopback detection, 802.1x, MAB. CPU traffic rate limiting
L3 Features	Static routing, dynamic routing: RIP, OSPFv2/v3, BGPv4+ Multicast routing: PIM-SM, PIM-DM, PIM-SSM, MSDP IPv4 routing table size: 13K routes
L2-Multicast	IGMPv1/v2/v3 Snooping, Multicast VLAN Replication (MVR), Multicast Source/Destination Control, Multicast Filter
QoS	8 queues per port, DWRR / SP / SP + DWRR, CoS/DSCP marking/remarking, bandwidth limiting
Redundancy Protocols	STP, RSTP, MSTP, ERPS, LACP
Management Features	CLI, WEB, SNMP
Power Redundancy Features	SNR-S3850G-24FX: 220V AC + 12V DC, AC power monitoring SNR-S3850G-24FX-DC: 220V AC + 48V DC, AC power monitoring SNR-S3850G-24FX-UPS: 220V AC + 12V battery connector with charging capability, AC power monitoring







# SNR-S5210G-24FX

16K MAC

Power Redundancy with Monitoring

Fast-Convergence Redundancy Protocols

1/10GE SFP+ Uplink Ports

DDM on All Optical Ports

Static Routing

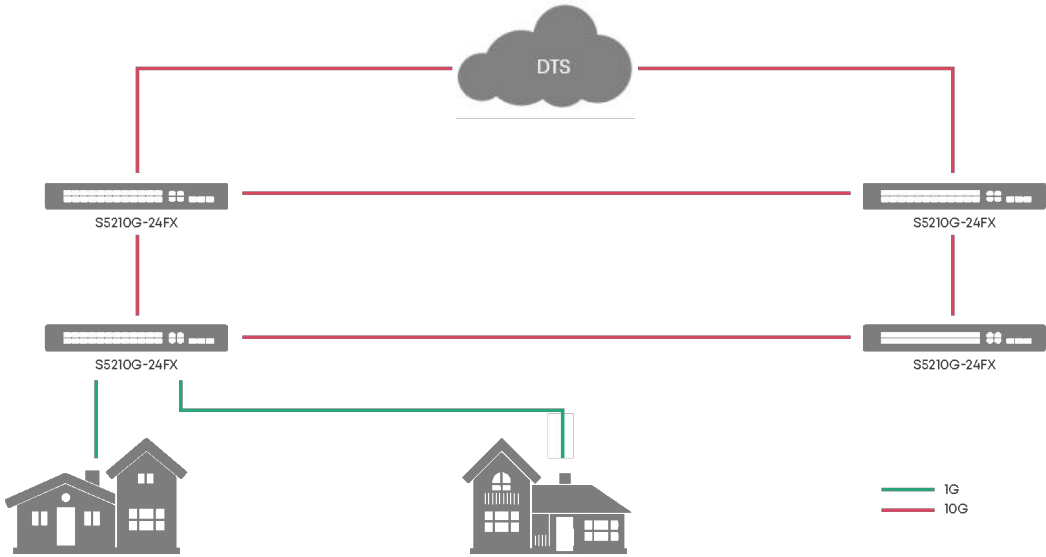
Active Cooling System with Low Noise Level

Managed L2+ switch SNR-S5210G-24FX - an excellent solution for aggregation and optical access levels. The software supports all necessary L2-level functionality, which together with various power redundancy options enables building fault-tolerant networks for service provider access/aggregation levels and Enterprise segments.

The switch is equipped with 4 GE RJ-45/SFP combo ports, 20 1000Base-X SFP ports, 4 1/10GE SFP+ ports. It also includes DDMI support on all optical ports and an active cooling system with hardware-controlled fan speed adjustment.

## Key Features

VLAN	4094 VLAN, Voice-VLAN, Private-VLAN, MAC-VLAN, Port-based QinQ, Selective QinQ, VLAN-Translation
Interfaces	4 x 10/100/1000Base-T   100/1000Base-X Combo, 20 x 100/1000Base-X SFP, 4 x 1/10GE SFP+
MAC Address Table	16K
Switching Fabric	128 Gbps
Performance	95.2 Mpps
Security Features	1792 ACL rules IP ACL, MAC ACL, IP-MAC-Port binding, DHCP Snooping, DHCP Relay, DHCP Option 82 Broadcast/Multicast/Unicast traffic limiting, Loopback detection CPU traffic rate limiting
L3 Features	Static routing: 512 routes, 2K ARP entries, 32 IP interfaces
L2-Multicast	IGMPv1/v2/v3 Snooping, Multicast VLAN Replication (MVR), Multicast Source/Destination Control, Multicast Filter
QoS	8 queues per port, SP, DWRR, SP+WRR. CoS/DSCP marking/remarking. Bandwidth limiting.
Redundancy Protocols	STP, RSTP, MSTP, ERPS, LACP
Management Features	CLI, SNMP
Power Redundancy Features	SNR-S5210G-24FX-UPS: 220V AC + 12V battery connector with charging capability, AC power monitoring SNR-S5210G-24FX-DC: 220V AC + 48V DC, power monitoring SNR-S5210G-24FX-RPS: 220V AC + 12V DC, power monitoring SNR-S5210G-24FX-2AC: 220V AC + 220V AC, power monitoring





# SNR-S5210X-8F

16K MAC

Power Redundancy with Monitoring

Fast-Convergence Redundancy Protocols

Compact form factor

1/10GE SFP+ ports with 100Mbps support

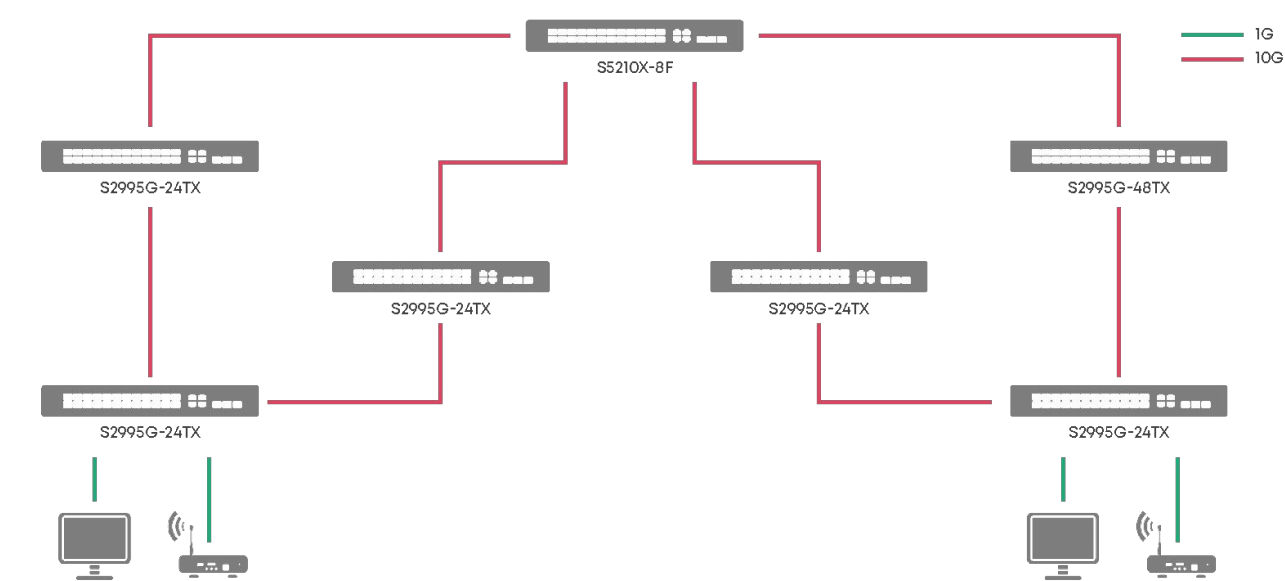
Static Routing

Active Cooling System with Low Noise Level

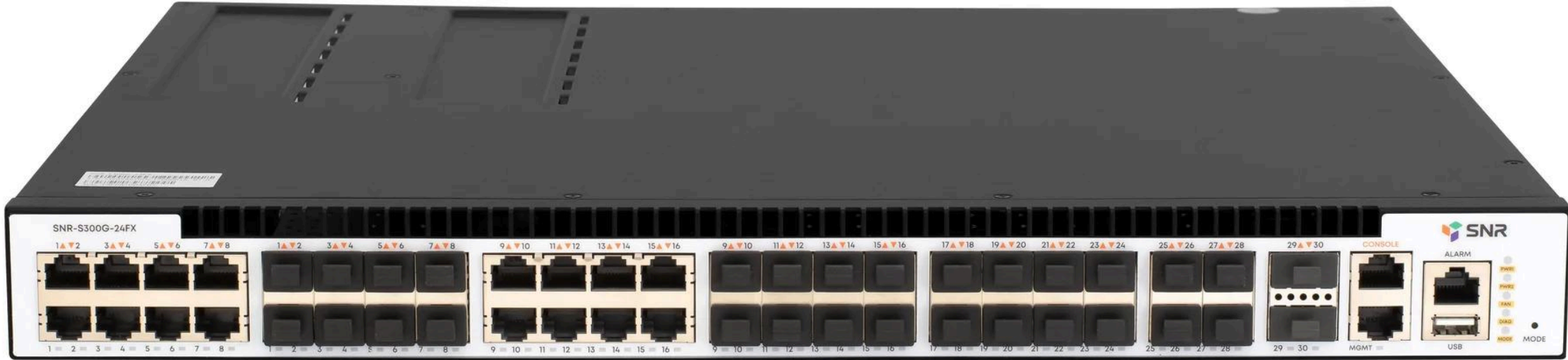
The SNR-S5210X-8F is a compact high-performance 10GE switch designed for interconnecting servers, storage systems, and clients. Built-in security features and QoS (Quality of Service) capabilities ensure high network reliability and performance. The switch's active cooling system with automatic hardware-controlled fan speed adjustment provides efficient cooling with low noise levels.

## Key Features

VLAN	4094 VLAN, Voice-VLAN, Private-VLAN, MAC-VLAN, Port-based QinQ, Selective QinQ, VLAN-Translation
Interfaces	8 x 1/10GE SFP+
MAC Address Table	16K
Switching Fabric	160 Gbps
Performance	119 Mpps
Security Features	1792 ACL rules IP ACL, MAC ACL, IP-MAC-Port binding, DHCP Snooping, DHCP Relay, DHCP Option 82 Broadcast/Multicast/Unicast traffic limiting, Loopback detection. CPU traffic rate limiting
L3 Features	Static routing: 512 routes, 2K ARP entries, 32 IP interfaces
L2-Multicast	IGMPv1/v2/v3 Snooping, Multicast VLAN Replication (MVR), Multicast Source/Destination Control, Multicast Filter
QoS	8 queues per port: SP, DWRR, SP+WRR CoS/DSCP marking/remarking Bandwidth limiting
Redundancy Protocols	STP, RSTP, LACP, ERPS
Management Features	CLI, SNMP
Power Redundancy Features	SNR-S5210X-8F-UPS: 220V AC + 12V battery connector with charging capability SNR-S5210X-8F-DC: 220V AC + 48V DC, power monitoring SNR-S5210X-8F-RPS: 220V AC + 12V DC, power monitoring







# SNR-S300G-24FX

ASIC Broadcom Helix 4

24 x GE SFP  
(16 x Combo)

4 x 1/10GE SFP+

Hot Swap PSU 1 + 1

Stacking Support

L3: 16K IPv4, до 48K ARP, OSPF, BGP, PIM

MPLS Support (L2VPN, L3VPN)

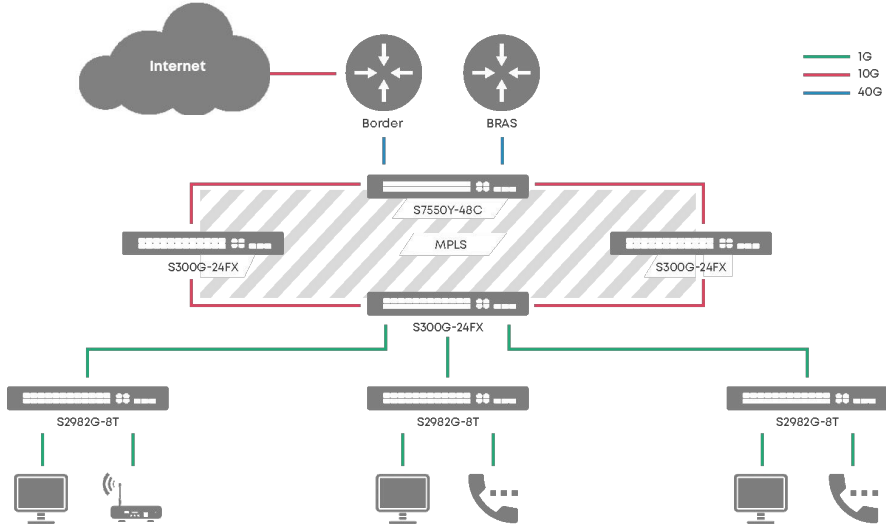
SNR-S300G-24FX Managed L3/MPLS Switch - a high-performance aggregation/core layer solution with MPLS support. The switch features 16 1GE/SFP combo ports, 8 1GE SFP ports, 4 1/10GE SFP+ ports, and 2 dedicated QSFP+ stacking ports.

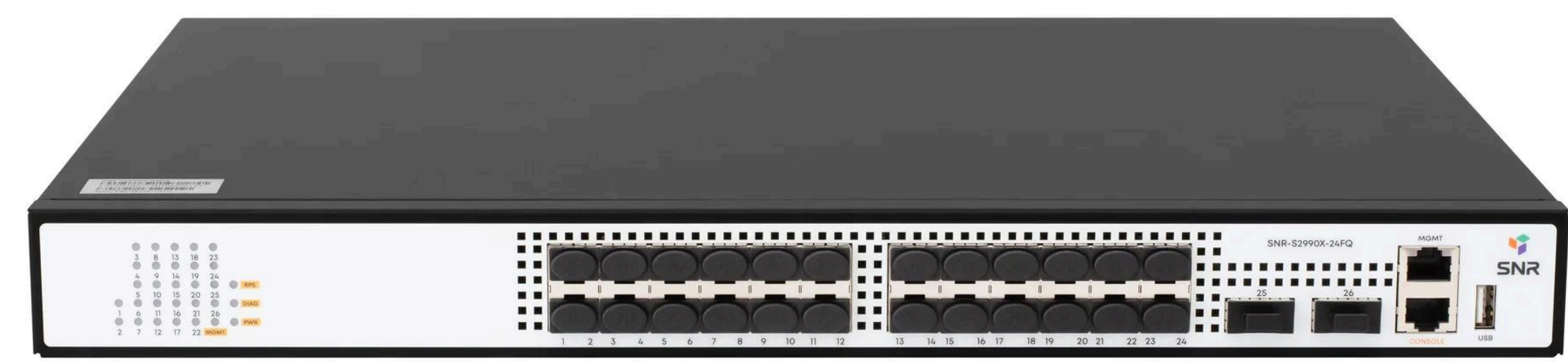
The modern chipset enables the switch to operate at full port speed with a switching capacity of 208 Gbps and packet forwarding rate of 155 Mpps. The switch supports OSPF, BGP, PIM, and MSDP routing protocols while offering three resource allocation profiles that scale up to 64K MAC addresses, 48K ARP entries, and 16K routing entries based on the selected profile.

MPLS support, including L3 and L2 VPN (VPLS, VPWS), enables traffic flow optimization and isolation of different traffic classes across the network.

## Key Features

VLAN	4094 VLAN, Voice-VLAN, Private-VLAN, MAC-VLAN, Port-based QinQ, Selective QinQ, VLAN Translation
Interfaces	16 x Combo 10/100/1000Base-T   100/1000Base-X SFP, 8 x 100/1000Base-X SFP, 4 x 1/10GE SFP+, 2 x QSFP+ 20 Gbps stacking ports
MAC Address Table	Up to 64K
ARP Table	Up to 16K
Security Features	3K ACL rules IP ACL, MAC ACL, MAC-IP ACL, Userdefined ACL Port-Security, IP-MAC-Port binding, DHCP Snooping, DHCP Relay, DHCP Option 82 Broadcast/Multicast/Unicast traffic limiting, Loopback detection, 802.1x, MAB. CPU traffic rate limiting
L3 Features	Static routing, dynamic routing: RIP, OSPFv2/v3, BGPv4+ Multicast routing: PIM-SM, PIM-DM, PIM-SSM, MSDP IPv4 routing table size: 16K routes ARP table size: up to 48K entries
L2-Multicast	IGMPv1/v2/v3 Snooping, Multicast VLAN Replication (MVR), Multicast Source/Destination Control, Multicast Filter
MPLS	LDP, VPWS, VPLS, L3VPN
QoS	8 queues per port, SP / WRR / DWRR / SP + WRR / SP + DWRR, CoS/DSCP marking/remarking, bandwidth limiting
Redundancy Protocols	STP, RSTP, MSTP, ERPS, LACP
Management Features	CLI, WEB, SNMP
Power Redundancy Features	Dual Hot Swap power supplies, power monitoring





# SNR-S2990X-24FQ

24 x 1/10GE SFP+

2 x 40GE QSFP+

Stacking via standard interfaces

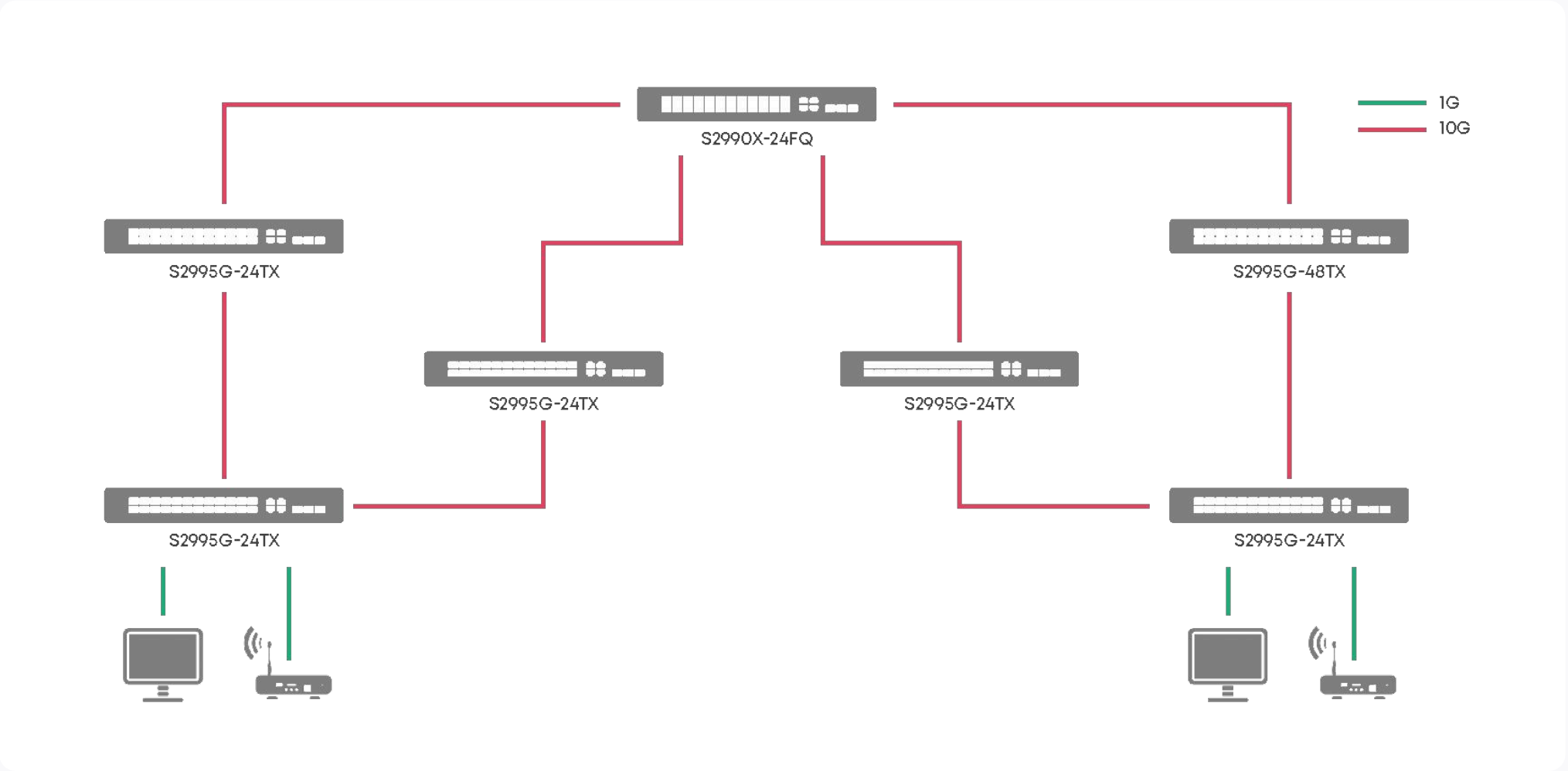
High-performance Broadcom ASIC

The fully optical L2+ switch SNR-S2990X-24FQ features 24x 1/10GE SFP+ ports and 2x 40GE QSFP+ ports. With high performance, functionality, and reliability, it's an ideal solution for aggregating 10GE links in carrier networks and switching between servers/storage systems in data centers.

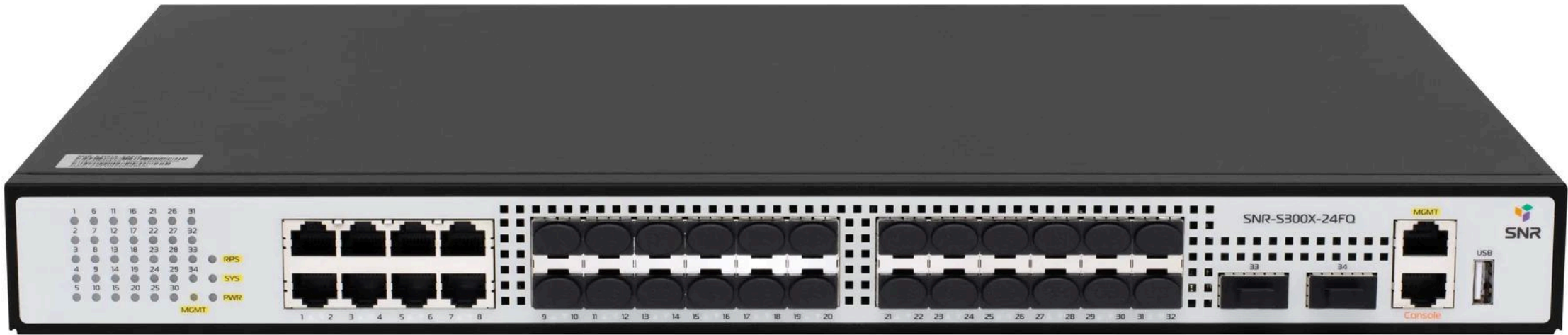
Redundant AC/DC power supplies, stacking support, and protocols like LACP and ERPS enable building fault-tolerant networks with minimal convergence time using the SNR-S2990X-24FQ.

## Key Features

VLAN	4094 VLAN, Voice-VLAN, Private-VLAN, MAC-VLAN, Port-based QinQ, Selective QinQ, VLAN Translation
Interfaces	24 x 1/10GE SFP+, 2 x 40GE QSFP+
MAC Address Table	32K
Security Features	1K ACL rules IP ACL, MAC ACL, MAC-IP ACL, Userdefined ACL Port-Security, IP-MAC-Port binding, DHCP Snooping, DHCP Relay, DHCP Option 82 Broadcast/Multicast/Unicast traffic limiting, Loopback detection, 802.1x, MAB. CPU traffic rate limiting
L2-Multicast	IGMPv1/v2/v3 Snooping, Multicast VLAN Replication (MVR), Multicast Source/Destination Control, Multicast Filter
QoS	8 queues per port: SP, WRR, SP+WRR, DWRR CoS/DSCP marking/remarking Bandwidth limiting
Redundancy Protocols	STP, RSTP, MSTP, ERPS, LACP
Management Features	CLI, WEB, SNMP
Power Redundancy Features	SNR-S2990X-24FQ: 220V AC + 48V DC, power monitoring SNR-S2990X-24FQ-2AC: 220V AC + 220V AC







# SNR-S300X-24FQ

8 x 1GE RJ-45,  
24 x 1/10GE SFP+

2 x 40GE QSFP+

16K IPv4 routes

16K ARP

32K MAC

OSPF, BGP, PIM

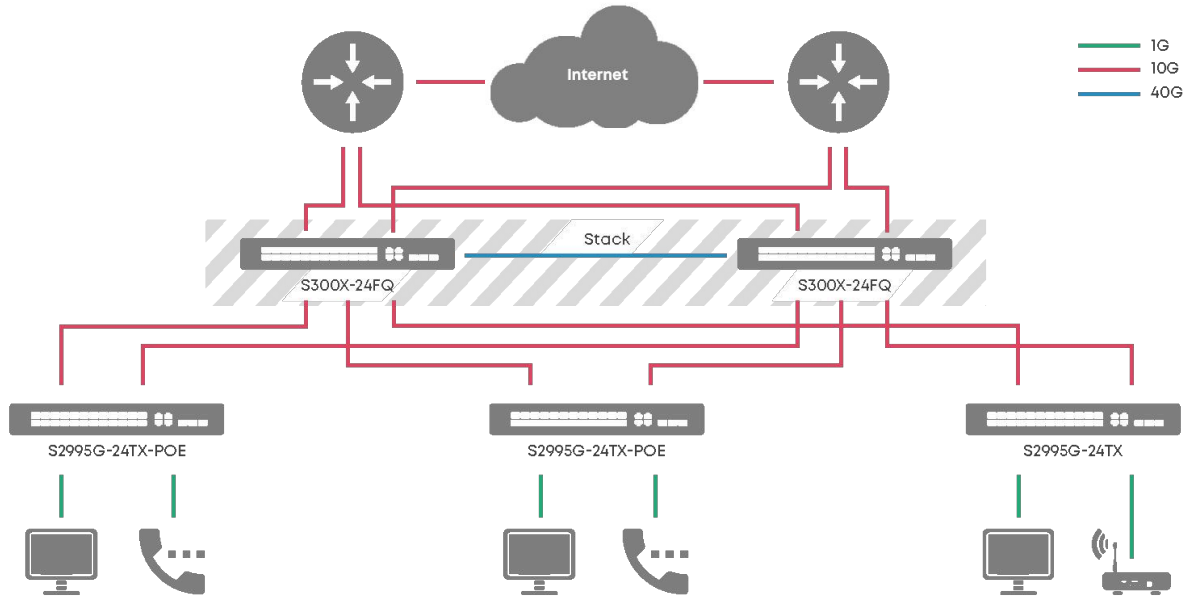
Stacking via standard  
interfaces

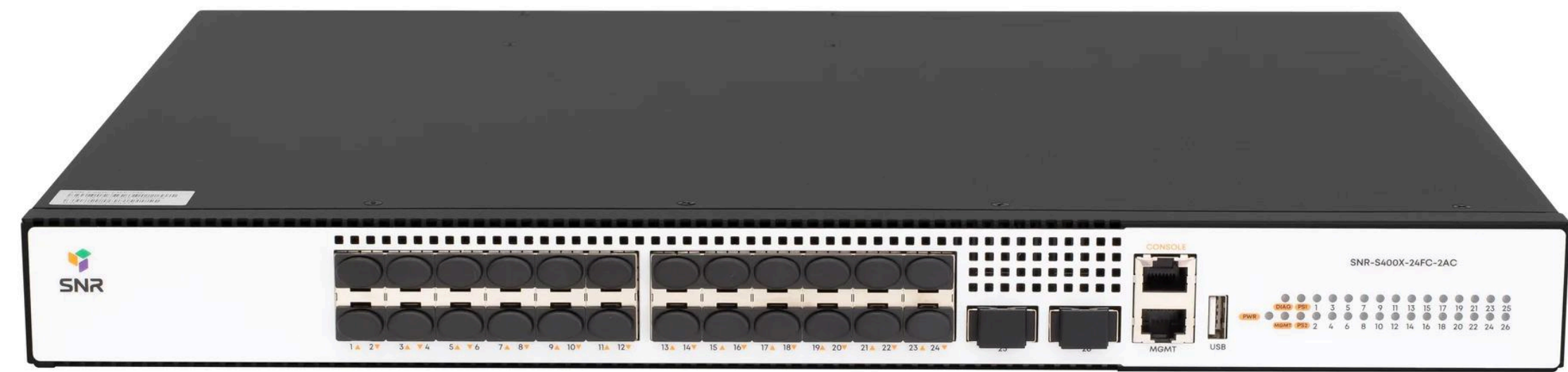
The SNR-S300X-24FQ is a next-generation stackable 10/40GE switch featuring advanced hardware architecture and comprehensive L2/L3 functionality. Designed for aggregation/core layer deployment, this switch offers a unique interface combination: 8 copper GE ports, 24x 1/10GE SFP+ ports, and 2x 40GE QSFP+ ports - enabling versatile solutions for diverse applications.

Stacking is implemented through standard 40GE QSFP+ interfaces without requiring additional cards. The modern Broadcom ASIC ensures all interfaces operate simultaneously at full speed with a total switching capacity of 656 Gbps.

## Key Features

VLAN	4094 VLAN, Voice-VLAN, Private-VLAN, MAC-VLAN, Port-based QinQ, Selective QinQ, VLAN Translation
Interfaces	8 x 10/100/1000Base-T, 24 x 1/10GE SFP+, 2 x 40GE QSFP+
MAC Address Table	32K
ARP Table	16K
Security Features	3K ACL rules IP ACL, MAC ACL, MAC-IP ACL, Userdefined ACL Port-Security, IP-MAC-Port binding, DHCP Snooping, DHCP Relay, DHCP Option 82 Broadcast/Multicast/Unicast traffic limiting, Loopback detection, 802.1x, MAB. CPU traffic rate limiting
L3 Features	Static routing, dynamic routing: RIP, OSPFv2/v3, BGPv4+ Multicast routing: PIM-SM, PIM-DM, PIM-SSM, MSDP IPv4 routing table size: 16K routes ARP table size: 16K entries
L2-Multicast	IGMPv1/v2/v3 Snooping, Multicast VLAN Replication (MVR), Multicast Source/Destination Control, Multicast Filter
QoS	8 queues per port: SP / WRR / DWRR / SP+WRR / SP+DWRR CoS/DSCP marking/remarking Bandwidth limiting
Redundancy Protocols	STP, RSTP, MSTP, LACP, ERPS
Management Features	CLI, WEB, SNMP
Power Redundancy Features	SNR-S300X-24FQ: 220V AC + 48V DC, AC power monitoring SNR-S300X-24FQ-2AC: 220V AC + 220V AC





# SNR-S400X-24FC-2AC

24 x 1/10GE SFP+

2 x 40/100G QSFP28

32K IPv4 routs, 16K ARP

VxLAN and EVPN-VxLAN Support

MLAG support

Hot Swap PSU 1 + 1

96K MAC

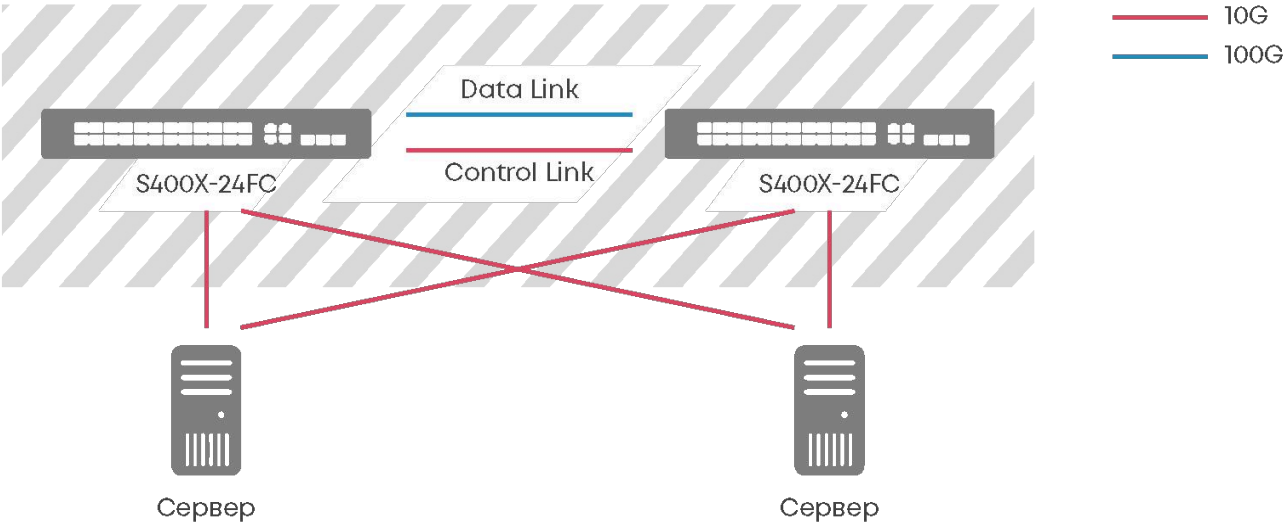
Stacking via standard interfaces

The SNR-S400X-24FC-2AC managed L3 switch is a versatile aggregation/core layer solution. Featuring 24x 1/10G SFP+ ports and 2x 40/100G QSFP28 ports, this switch can be deployed both at network nodes and as a TOR switch in data centers.

It supports dynamic routing (RIPv1/v2, OSPFv2/v3, BGPv4+) with capacities of 32K routes, 16K ARP entries, 4K multicast groups, and 96K MAC addresses, along with MLAG, VxLAN, and EVPN-VxLAN functionality.

## Key Features

VLAN	4094 VLAN, Voice-VLAN, Private-VLAN, MAC-VLAN, Port-based QinQ, Selective QinQ, VLAN Translation
Interfaces	24 x 1/10GE SFP+, 2 x 40/100GE QSFP28
Datacenter	VxLAN Static tunnel, EVPN-VxLAN, VxLAN L2 gateway, VxLAN L3 gateway
MAC Address Table	96K
ARP Table	16K
Security Features	1K ACL rules IP ACL, MAC ACL, MAC-IP ACL, Userdefined ACL Port-Security, IP-MAC-Port binding, DHCP Snooping, DHCP Relay, DHCP Option 82 Broadcast/Multicast/Unicast traffic limiting, Loopback detection, 802.1x, MAB. CPU traffic rate limiting
L3 Features	Static routing, dynamic routing: RIP, OSPFv2/v3, BGPv4+ Multicast routing: PIM-SM, PIM-DM, PIM-SSM, MSDP IPv4 routing table size: 32K routes ARP table size: 16K entries
L2-Multicast	IGMPv1/v2/v3 Snooping, Multicast VLAN Registration (MVR), Multicast Source/Destination Control, Multicast Filter
QoS	8 queues per port, SP / DWRR / SP+WDRR, CoS/DSCP marking/remarking, bandwidth limiting
Redundancy Protocols	STP, RSTP, MSTP, LACP, ERPS
Management Features	CLI, WEB, SNMP
Power Redundancy Features	Dual Hot Swap power supplies, power monitoring







# S4350 Series

OSPF, BGP, PIM

MPLS support, including L2 and L3 VPN

VxLAN and EVPN-VxLAN support

MLAG support

24K L3 routes

32K MAC addresses

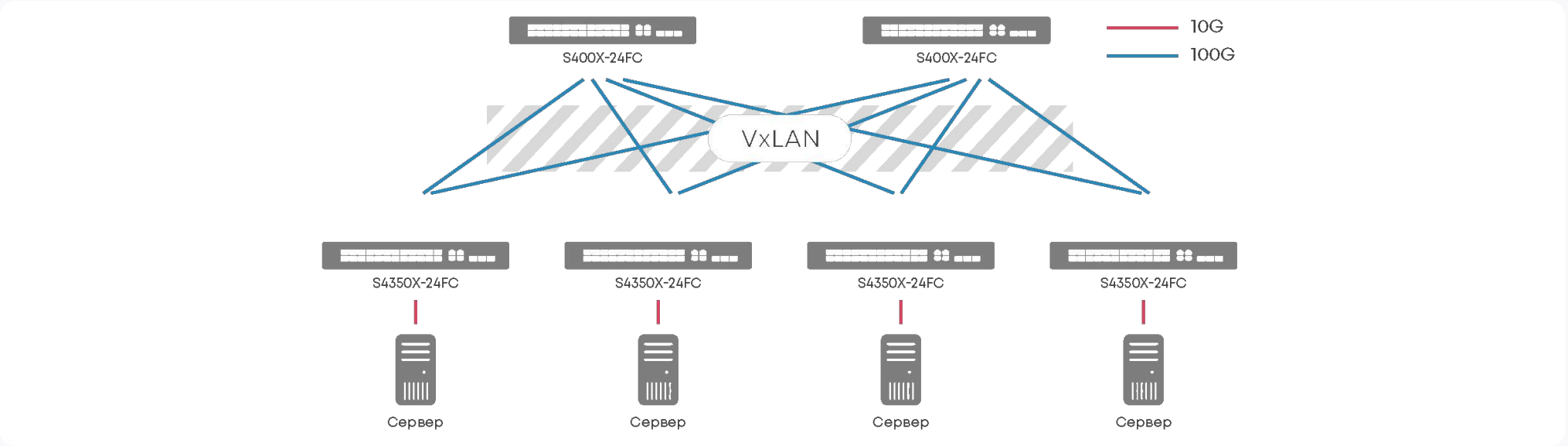
Hot Swap PSU 1 + 1

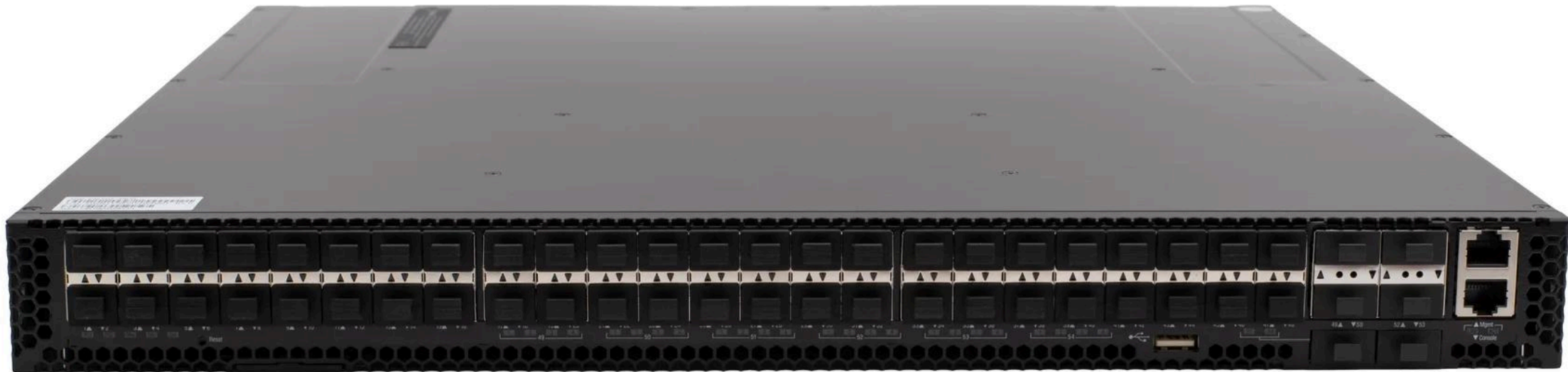
Stacking via standard interfaces

SNR-S4350X Switch is part of the SNR managed L3 switch series, designed for aggregation and core layers in carrier networks and data centers as a TOR switch. The switch features 24/48 1/10G SFP+ ports and 6 40/100G QSFP28 ports. It supports dynamic routing (RIPv1/v2, OSPFv2/v3, BGPv4+) with capacities of up to 16K IPv4 and 8K IPv6 routes, 8K ARP entries, and 32K MAC addresses. To enhance available bandwidth, the switch implements MPLS functionality, including L3 VPN and L2 VPN (VPLS, VPWS).

## Key Features

VLAN	4094 VLAN, Voice-VLAN, Private-VLAN, MAC-VLAN, Port-based QinQ, Selective QinQ, VLAN Translation
Interfaces	SNR-S4350X-24FC: 24 x 1/10GE SFP+, 6 x 40/100GE QSFP28 SNR-S4350X-48FC: 48 x 1/10GE SFP+, 6 x 40/100GE QSFP28
Datacenter	VxLAN Static tunnel, EVPN-VxLAN, VxLAN L2 gateway, VxLAN L3 gateway
MAC Address Table	32K
Security Features	1K ACL rules IP ACL, MAC ACL, MAC-IP ACL, Userdefined ACL Port-Security, IP-MAC-Port binding, DHCP Snooping, DHCP Relay, DHCP Option 82 Broadcast/Multicast/Unicast traffic limiting, Loopback detection, 802.1x, MAB. CPU traffic rate limiting
L3 Features	Static routing, dynamic routing: RIP, OSPFv2/v3, BGPv4+ Multicast routing: PIM-SM, PIM-DM, PIM-SSM, MSDP IPv4 routing table size: 24K routes ARP table size: 8K entries
L2-Multicast	IGMPv1/v2/v3 Snooping, Multicast VLAN Registration (MVR), Multicast Source/Destination Control, Multicast Filter
MPLS	LDP, VPWS, VPLS, L2VPN, L3VPN
QoS	8 queues per port, SP / WRR / SP+WRR / DWRR / SP+DWRR, CoS/DSCP marking/remarking, bandwidth limiting
Redundancy Protocols	STP, RSTP, MSTP, LACP, ERPS
Management Features	CLI, WEB, SNMP
Power Redundancy Features	Dual Hot Swap power supplies, power monitoring





# SNR-S4650X-48FQ

48 x 1/10GE SFP+

6 x 40GE QSFP+

Up to 288K MAC addresses

Up to 128K IPv4 routes

Hot Swap PSU 1 + 1

MPLS functionality

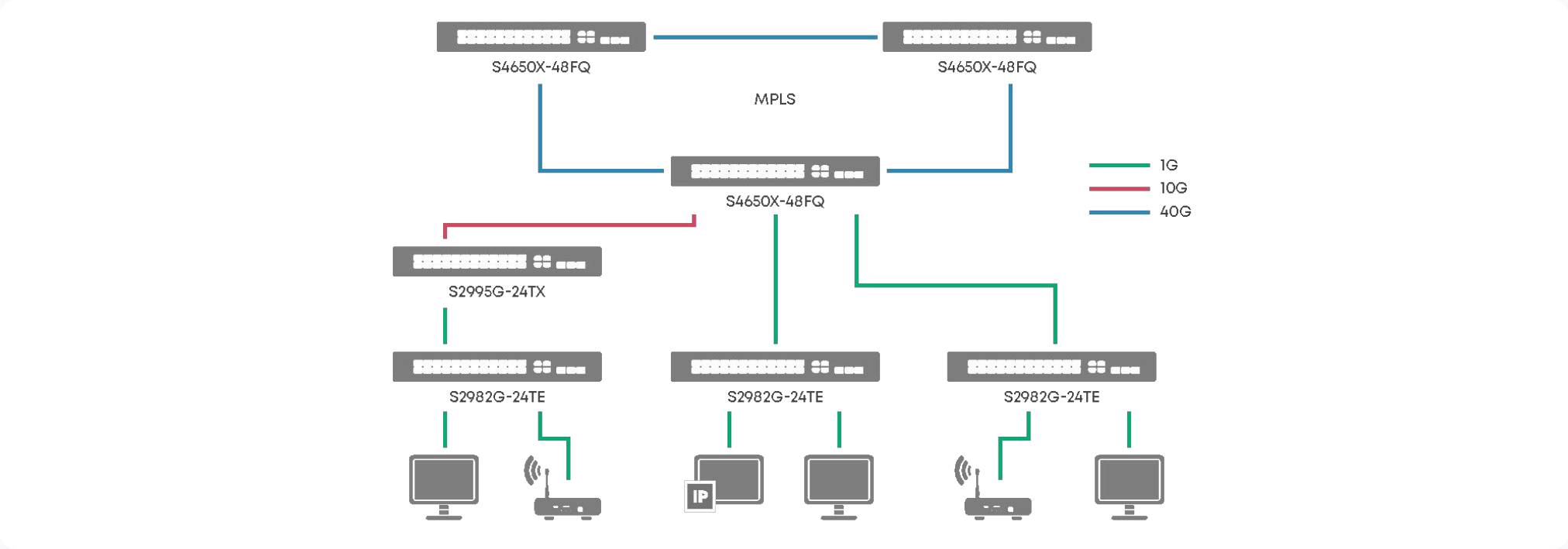
Stacking via standard interfaces

SNR-S4650X-48FQ is a high-performance L3/MPLS switch. The model features 48x 1/10GE SFP+ ports and 6x 40GE QSFP+ ports, with a total switching capacity of up to 1440 Gbps.

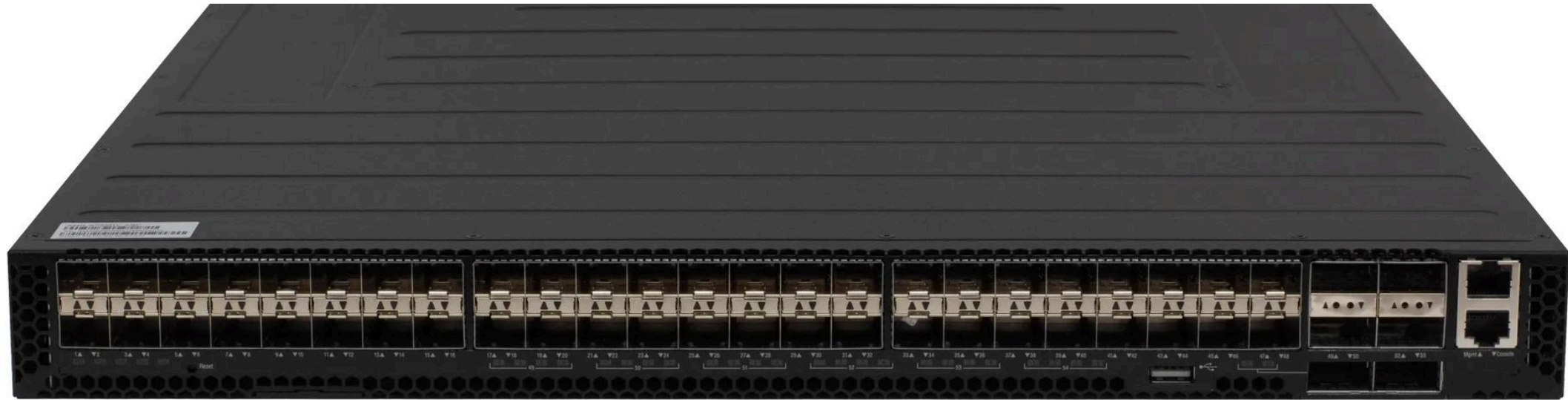
The switch ensures high fault tolerance through modular power supplies and support for L2/L3 redundancy protocols.

## Key Features

VLAN	4094 VLAN, Voice-VLAN, Private-VLAN, MAC-VLAN, Port-based QinQ, Selective QinQ, VLAN Translation
Interfaces	48 x 1/10GE SFP+, 6 x 40GE QSFP+
MAC Address Table	Up to 288K
Security Features	1K ACL rules IP ACL, MAC ACL, MAC-IP ACL, Userdefined ACL Port-Security, IP-MAC-Port binding, DHCP Snooping, DHCP Relay, DHCP Option 82 Broadcast/Multicast/Unicast traffic limiting, Loopback detection, 802.1x, MAB. CPU traffic rate limiting
L3 Features	Static routing, dynamic routing: RIP, OSPFv2/v3, BGPv4+ Multicast routing: PIM-SM, PIM-DM, PIM-SSM, MSDP IPv4 routing table size: up to 128K routes ARP table size: up to 208K entries
L2-Multicast	IGMPv1/v2/v3 Snooping, Multicast VLAN Replication (MVR), Multicast Source/Destination Control, Multicast Filter
MPLS	LDP, VPWS, VPLS, L3VPN
QoS	8 queues per port, SP / WRR / DWRR / SP+WRR / SP+DWRR, CoS/DSCP marking/remarking, bandwidth limiting
Redundancy Protocols	STP, RSTP, MSTP, LACP, ERPS
Management Features	CLI, WEB, SNMP
Power Redundancy Features	Dual Hot Swap power supplies, power monitoring







# S7550 Series

Up to 104K MAC addresses

Up to 128K IPv4 routes

Hot Swap PSU 1 + 1

MPLS and EVPN-VxLAN functionality

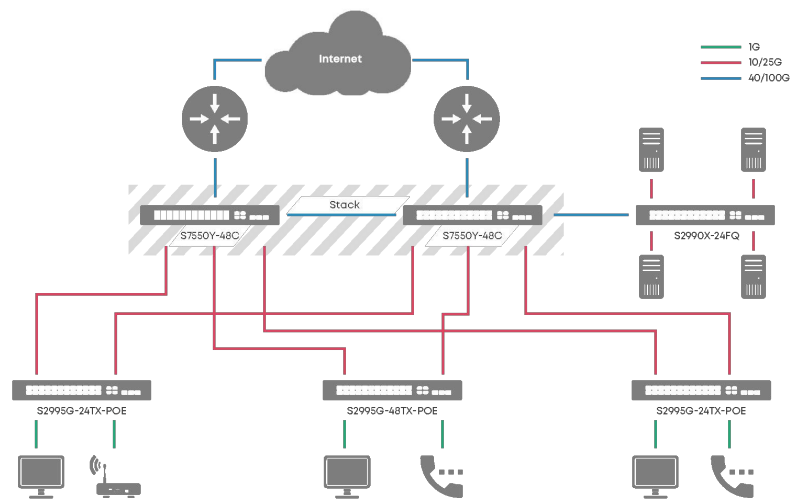
Stacking via standard interfaces

SNR-S7550 Series L3/MPLS switches are high-performance devices designed for core/aggregation network layers or as TOR switches in data centers.

The non-blocking switching matrix enables all interfaces to operate simultaneously at full speed with total throughput. The S7550 Series switches ensure high fault tolerance through modular power supplies and support for L2/L3 redundancy protocols.

## Key Features

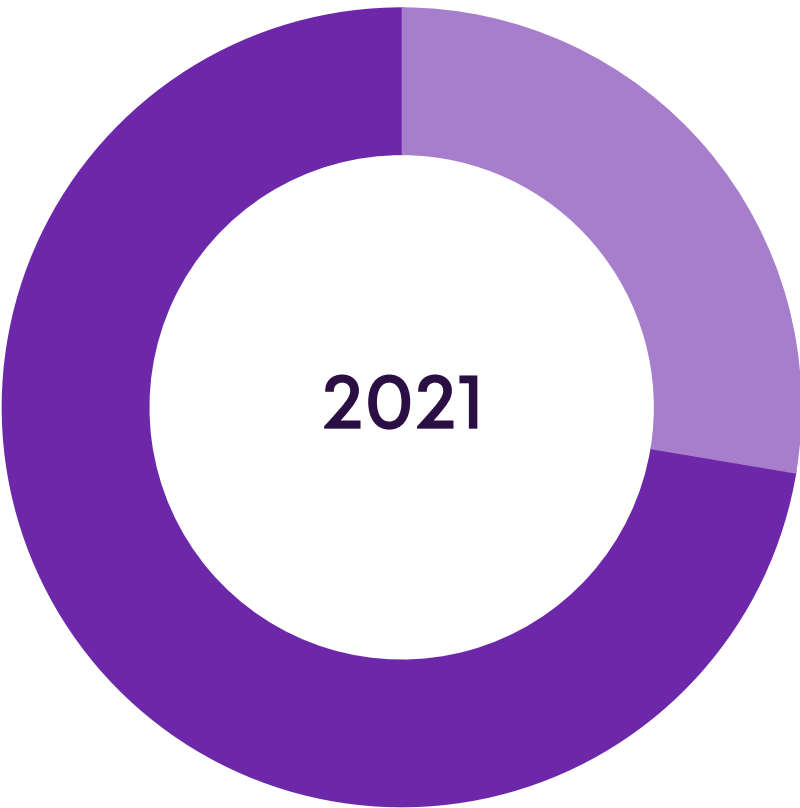
VLAN	4094 VLAN, Voice-VLAN, Private-VLAN, MAC-VLAN, Port-based QinQ, Selective QinQ, VLAN Translation
Datacenter	VxLAN Static tunnel; EVPN-VxLAN; VxLAN L2 gateway; VxLAN L3 gateway
Interfaces	SNR-S7550Y-48C: 48 x 10/25GE SFP28, 6 x 40/100GE QSFP28 SNR-S7550C-32F: 32 x 40/100GE QSFP28
MAC Address Table	Up to 104K MAC
Security Features	4K ACL rules IP ACL, MAC ACL, MAC-IP ACL, Userdefined ACL Port-Security, IP-MAC-Port binding, DHCP Snooping, DHCP Relay, DHCP Option 82 Broadcast/Multicast/Unicast traffic limiting, Loopback detection, 802.1x, MAB. CPU traffic rate limiting
L3 Features	Static routing, dynamic routing: RIP, OSPFv2/v3, BGPv4+ Multicast routing: PIM-SM, PIM-DM, PIM-SSM, MSDP IPv4 routing table size: 128K routes ARP table size: 32K entries
L2-Multicast	IGMPv1/v2/v3 Snooping, Multicast VLAN Replication (MVR), Multicast Source/Destination Control, Multicast Filter
MPLS	LDP, VPWS, VPLS, L3VPN
QoS	8 queues per port: SP / WRR / DWRR / SP+WRR / SP+DWRR CoS/DSCP marking/remarking Bandwidth limiting
Redundancy Protocols	STP, RSTP, MSTP, LACP, ERPS
Management Features	CLI, WEB, SNMP
Power Redundancy Features	Dual Hot Swap power supplies, power monitoring



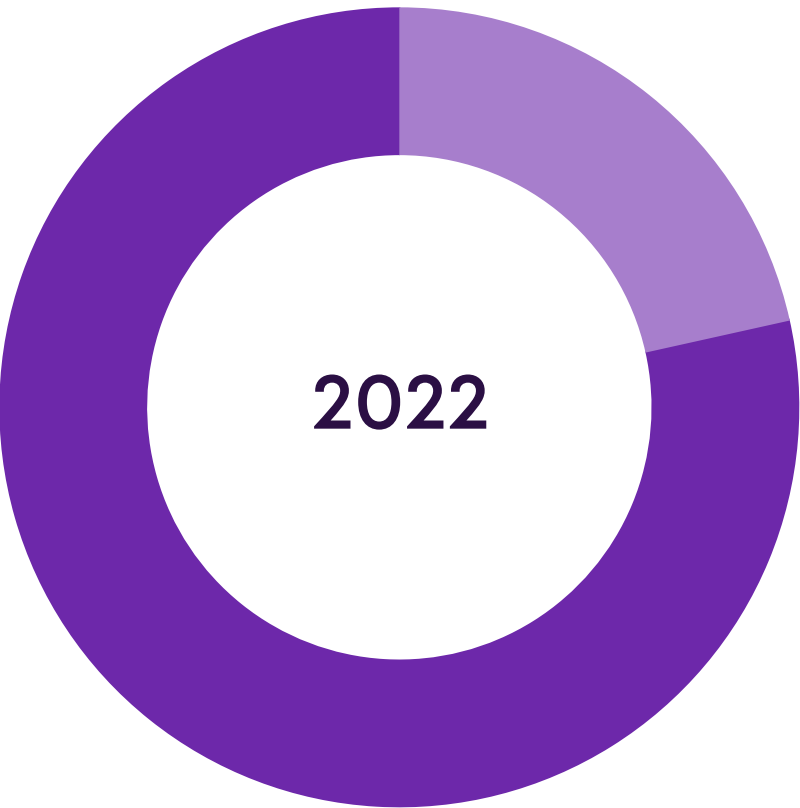
# Statistics

FE 27%

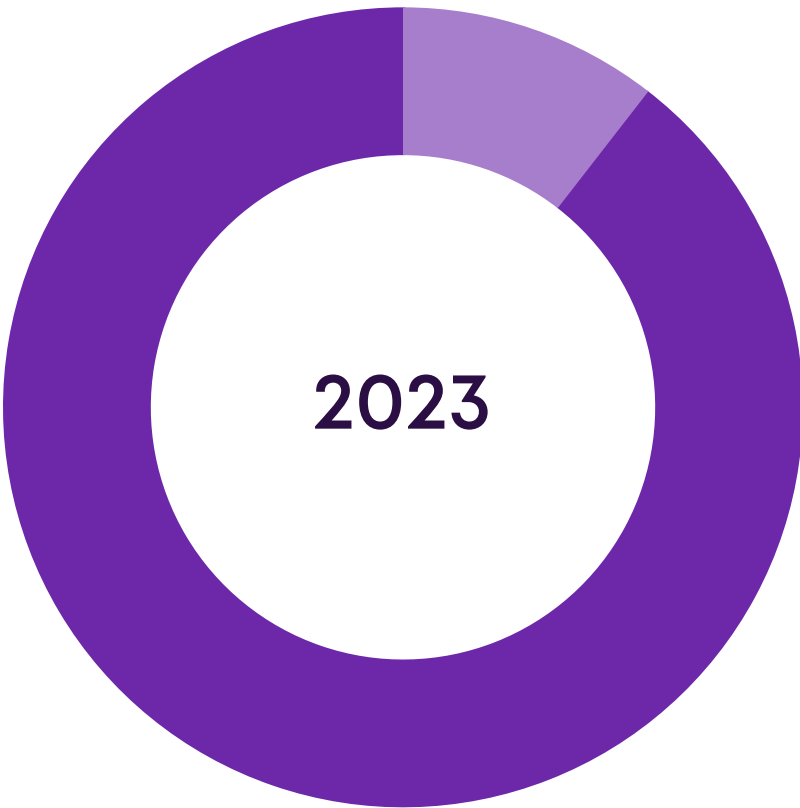
Access ports



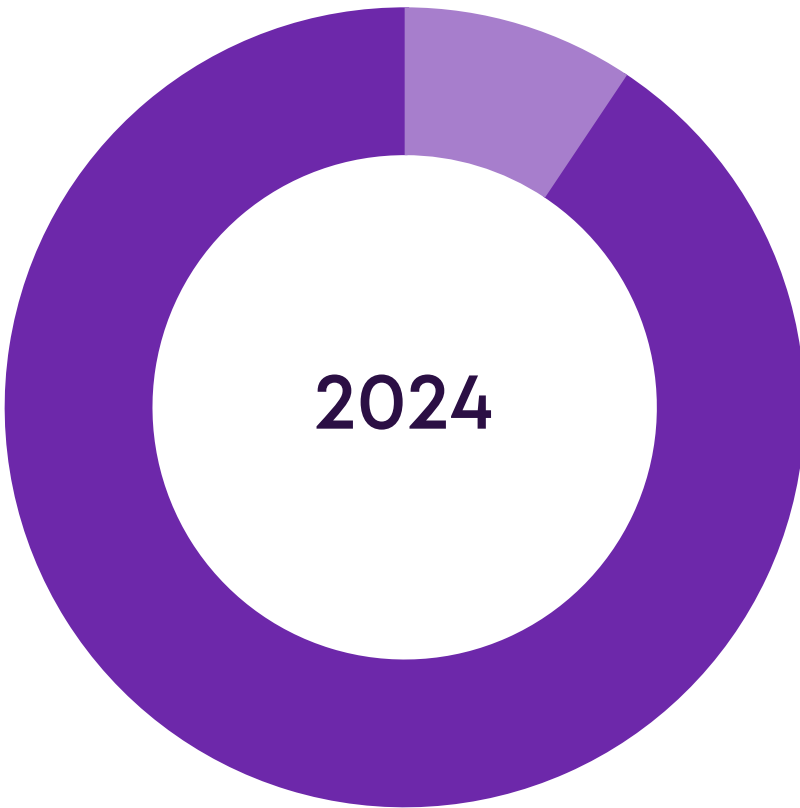
● GE - 73% ● FE - 27%



● GE - 80% ● FE - 20%

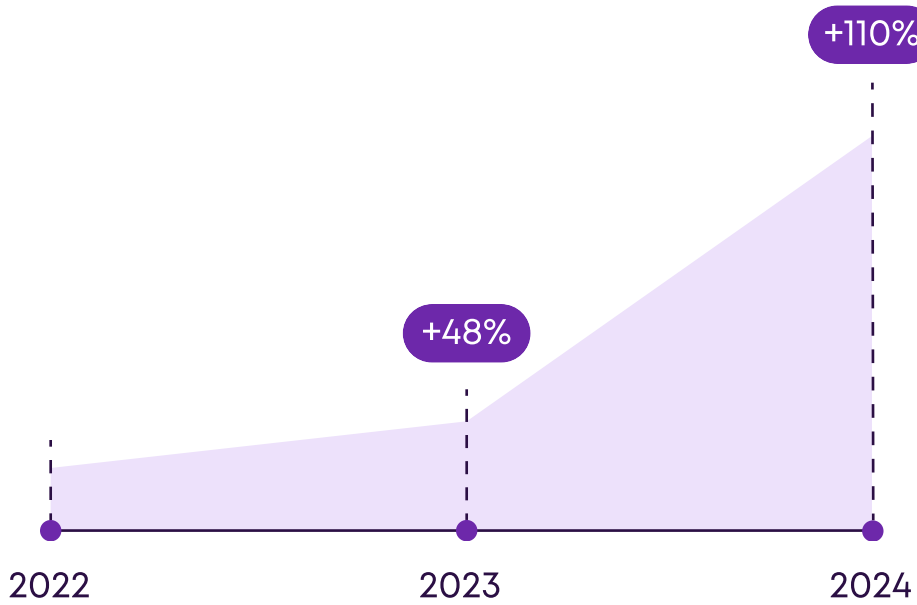


● GE - 91% ● FE - 9%

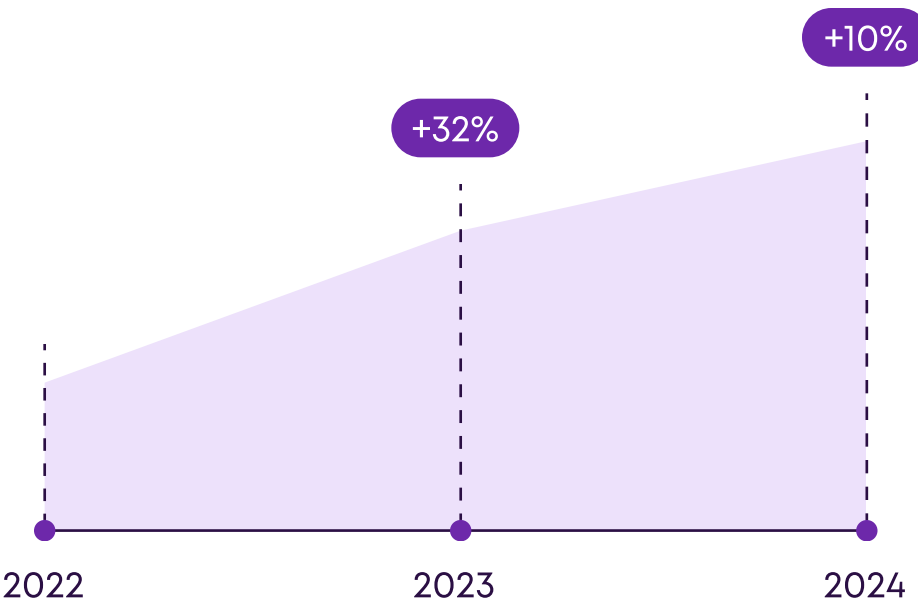


● GE - 92% ● FE - 8%

Switch sales growth



With 10GE interfaces



L2 PoE Switches

Support Statistics

1350

+

Processed switch-related requests

46

minutes - average response time

10

business days - average bugfix release time

0.1 %

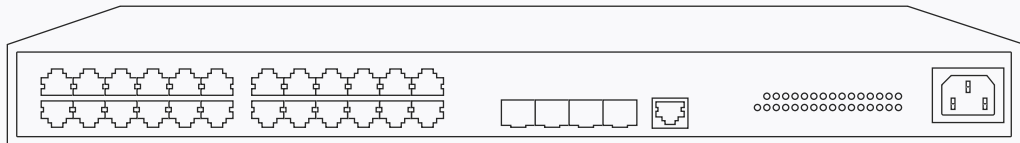
Warranty service center claim rate



# SNR Access Layer Switches

Reliable and modern SNR access layer managed switches are designed for networks of any scale. Extensive experience with telecom operators and corporate clients enables us to deliver equipment that fully meets our customers' requirements.

The SNR access switch lineup includes the following models and series:



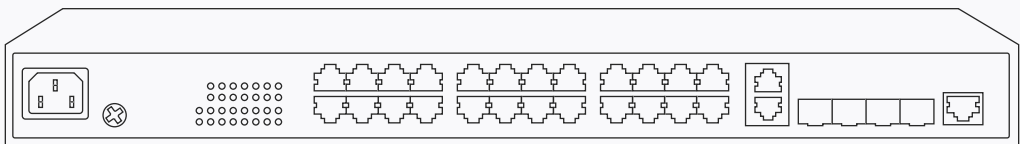
## S2962-24T

L2 switch with Fast/Gigabit Ethernet downlinks and Gigabit SFP uplink ports. A cost-effective 100 Mbps access solution, featuring 1GE RJ-45 ports.



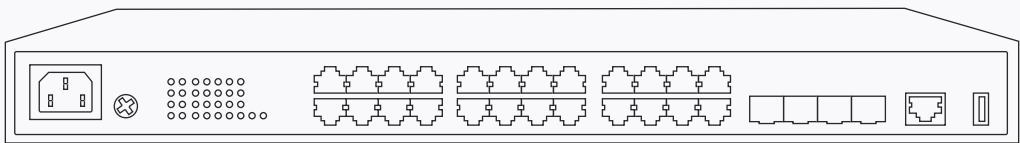
## S2982G

Gigabit L2 switches for carrier access above 100 Mbps, including PoE models suitable for corporate networks



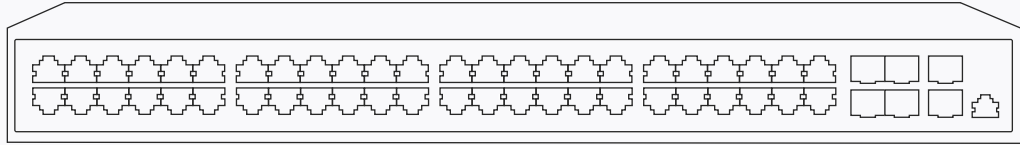
## S2985G

Gigabit series for carriers and enterprise clients. Non-blocking architecture and PoE enable services up to 1 Gbps



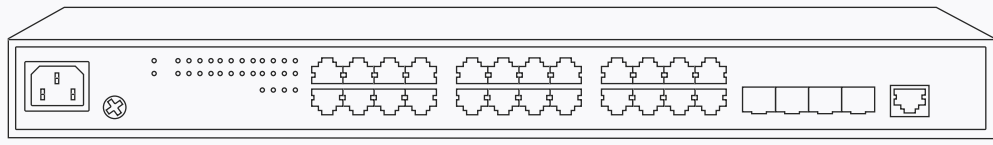
## S2989G

Stackable L2+ access switches with 4x 1/10GE SFP+ uplinks and 8/24/48x 1GE RJ-45 downlinks. High performance for high-speed connectivity



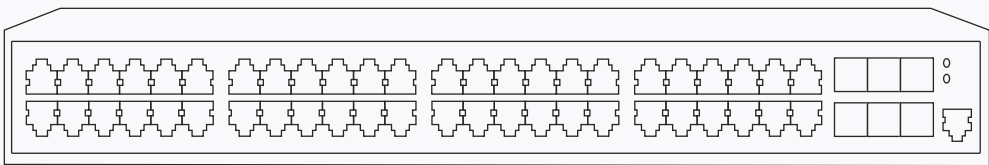
## S5110G

L2+ access switches with 1/10GE SFP+ uplinks and 24/48x 1GE RJ-45 downlinks. Affordable 10GE solution for enterprise and carrier networks



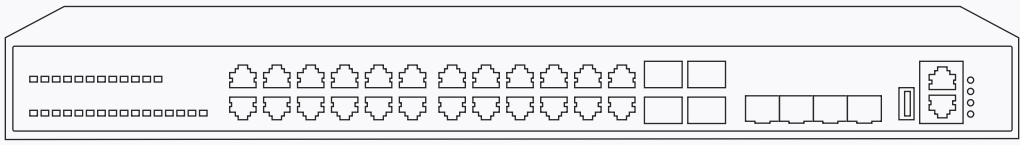
## S5210G

L2+ switches with 1/10GE SFP+ uplinks and 8/24x 1GE RJ-45 ports. PoE support for powering IP phones and Wi-Fi access points directly from the switch



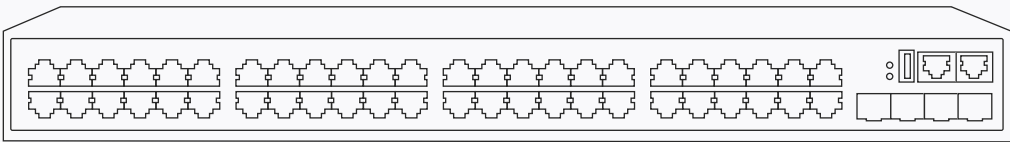
## S5310G

L2+ access switches with 6x 1/10GE SFP+ uplinks and 48x 1GE RJ-45 downlinks. High performance and versatile functionality for diverse applications



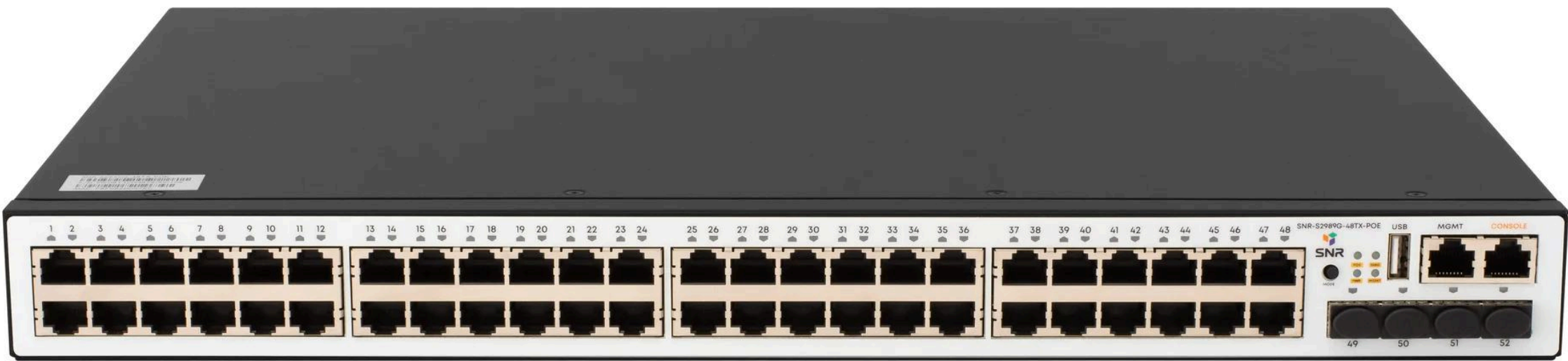
## S2995G

Gigabit access switches with 1/10GE SFP+ uplinks, L3 functionality, and PoE support. Up to 1K routes, BGP, PIM, OSPF for high-speed networks



## S3850G

Gigabit L3 switches with 1/10GE SFP+ uplinks, 24/48 1GE RJ-45 ports, and dual built-in power supplies. Supports up to 13K routes, BGP, PIM, OSPF



# S2989G Series

1GE RJ-45 Downlink and 1/10GE SFP+ uplink ports

Non-blocking architecture

Built-in surge protection on all ports

Software based on the S2995G series

Models with PoE support

Stacking via standard interfaces

S2989G Series – a new line of L2+ access switches. Currently, the series includes models with 8/24/48 1GE RJ-45 ports and 4 1/10GE SFP+ uplink ports, making them ideal for building gigabit access networks with 10GE uplinks.

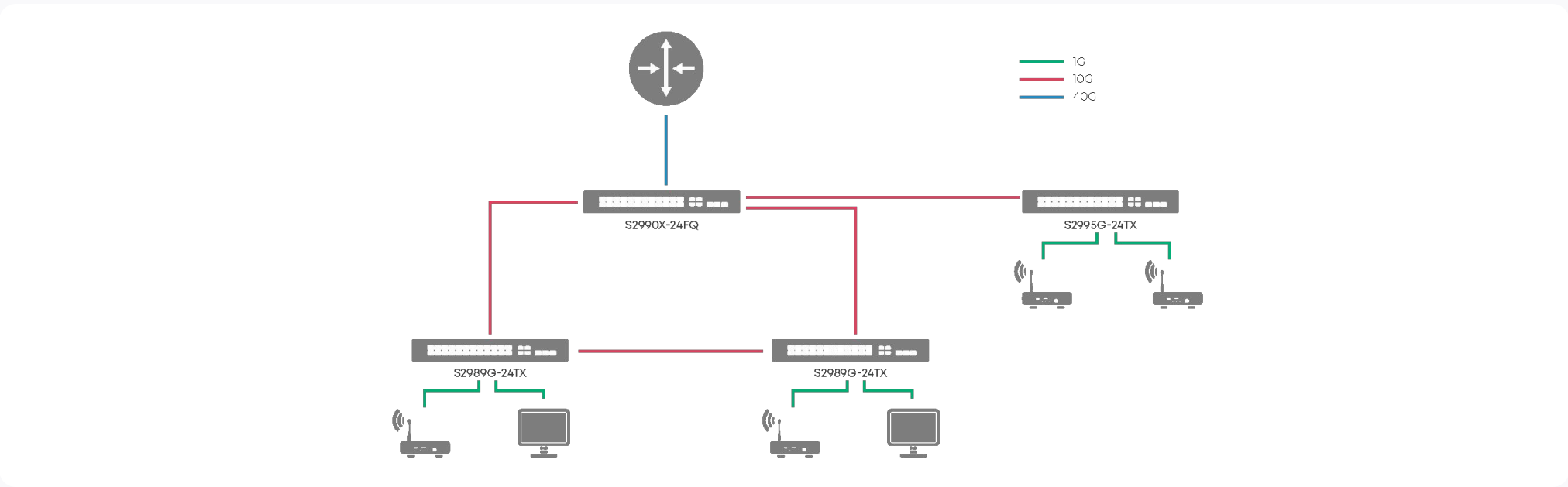
Support for fast-convergence L2 redundancy protocols enables the creation of flexible and fault-tolerant networks based on this series.

Additionally, the S2989G Series switches feature the standard SNR CLI and SNMP MIB, as well as software based on the S2995G Series, simplifying deployment and network maintenance.



## Key Features

VLAN	4094 VLAN, Voice-VLAN, Private-VLAN, MAC-VLAN, Port-based QinQ, Selective QinQ, VLAN Translation
Interfaces	SNR-S2989G-8TX (-POE): 8 x 10/100/1000Base-T, 4 x 1/10GE SFP+ SNR-S2989G-24TX (-POE): 24 x PoE 10/100/1000Base-T, 4 x 1/10GE SFP+ SNR-S2989G-48TX (-POE): 48 x PoE 10/100/1000Base-T, 4 x 1/10GE SFP+
PoE	SNR-S2989G-8TX-POE: 802.3af/at 125 W SNR-S2989G-24TX-POE: 802.3af/at 370 W SNR-S2989G-48TX-POE: 802.3af/at 740 W
MAC Address Table	16K
Security Features	SNR-S2989G-24TX (-POE   -8TX   - 8TX-POE): 512 ACL rules SNR-S2989G-48TX (-POE): 1024 ACL rules IP ACL, MAC ACL, MAC-IP ACL, Userdefined ACL Port-Security, IP-MAC-Port binding, DHCP Snooping, DHCP Relay, DHCP Option 82 Broadcast/Multicast/Unicast traffic limiting, Loopback detection, 802.1x, MAB CPU traffic rate limiting
L2-Multicast	IGMPv1/v2/v3 Snooping, Multicast VLAN Replication (MVR), Multicast Source/Destination Control, Multicast Filter
QoS	8 queues per port, SP, WDRR, SP+WDRR, CoS/DSCP marking/remarking, bandwidth limiting
Redundancy Protocols	STP, RSTP, MSTP, ERPS, LACP
Management Features	CLI, WEB, SNMP
Power Redundancy Features	SNR-S2989G-24TX-RPS: 220V AC + 12V DC SNR-S2989G-24TX-UPS: 220V AC + 12V battery connector with charging capability SNR-S2989G-24TX-2AC: 220V AC + 220V AC SNR-S2989G-24TX-POE-2AC: 220V AC + 220V AC SNR-S2989G-48TX-RPS: 220V AC + 12V DC





# S5110G Series

1/10GE SFP+ uplink ports

Integrated security features

Non-blocking architecture

Cost-effective access-layer solution with 10GE SFP+ uplinks

Built-in surge protection on all ports

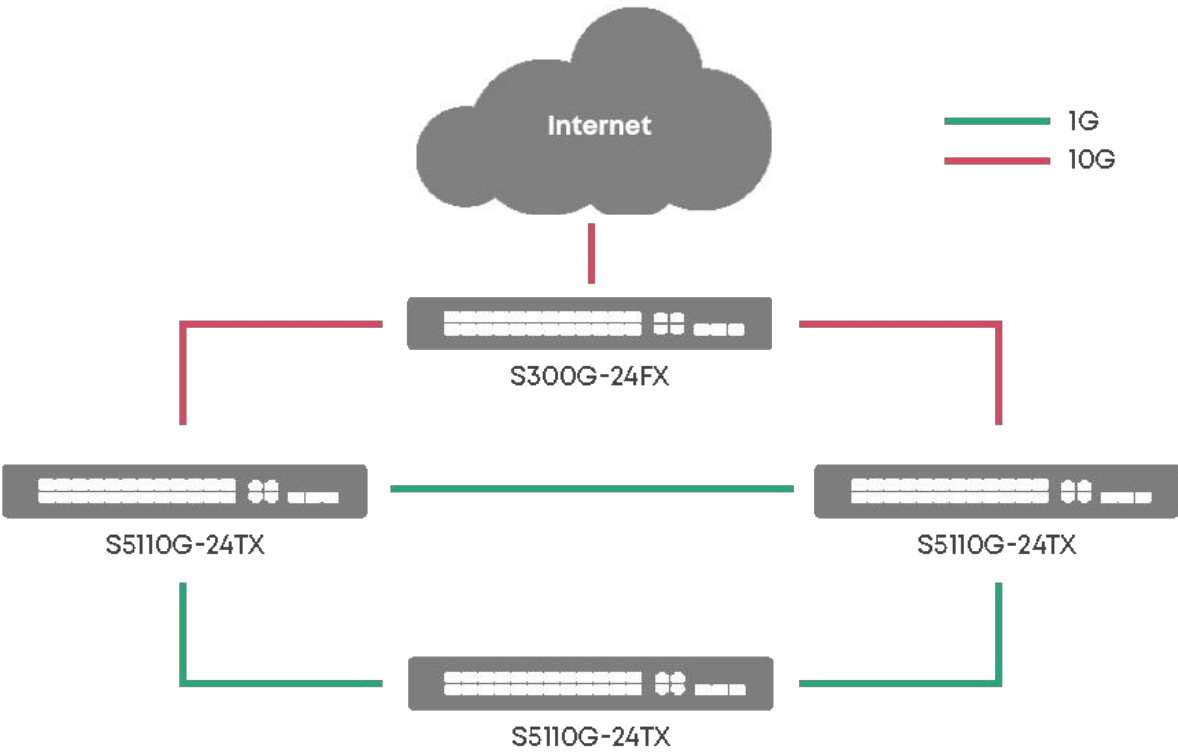
Static routing

S5110G Series is the most cost-effective solution in its class with 10GE SFP+ uplink ports. The port density and functionality of this series enable the construction of gigabit access layers in enterprise networks and carrier networks. The series features 24/48 10/100/1000Base-T ports and 4/6 1/10GE (SFP+) ports, as well as models with PoE support.

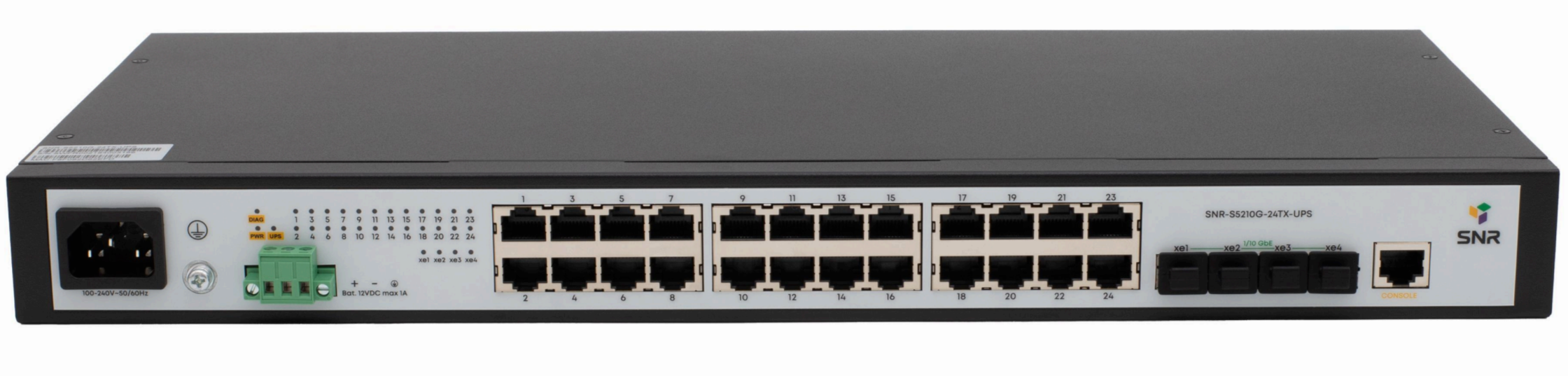
This switch is virtually identical to the popular carrier-grade models SNR-S2989G-24TX and SNR-S5210G-24TX. Additionally, it shares the same CLI, allowing engineers to seamlessly transition to this model without operational disruptions.

## Key Features

VLAN	4094 VLAN, Voice-VLAN, Private-VLAN, MAC-VLAN, Port-based QinQ, Selective QinQ, VLAN-Translation
Interfaces	SNR-S5110G-24TX: 24 x 10/100/1000Base-T, 4 x 1/10GE SFP+ SNR-S5110G-24TX-POE: 24 x PoE 10/100/1000Base-T, 4 x 1/10GE SFP+ SNR-S5110G-48TX: 48 x 10/100/1000Base-T, 6 x 1/10GE SFP+ SNR-S5110G-48TX-POE: 48 x PoE 10/100/1000Base-T, 6 x 1/10GE SFP+
PoE	SNR-S5110G-24TX-POE: 802.3af/at 250 W SNR-S5110G-48TX-POE: 802.3af/at 370 W
MAC Address Table	SNR-S5110G-24TX(-POE) - 16K SNR-S5110G-48TX(-POE) - 32K
Security Features	1536 ACL rules IP ACL, MAC ACL, IP-MAC-Port binding, DHCP Snooping, DHCP Relay, DHCP Option 82 Broadcast/Multicast/Unicast traffic limiting, Loopback detection CPU traffic rate limiting
L2-Multicast	IGMPv1/v2/v3 Snooping, Multicast VLAN Replication (MVR), Multicast Source/Destination Control, Multicast Filter
L3 Features	SNR-S5110G-24TX(-POE): Static routing, 512 routes, 2K ARP entries, 32 IP interfaces SNR-S5110G-48TX(-POE): Static routing, 12K routes, 8K ARP entries, 32 IP interfaces
QoS	8 queues per port, SP, WDRR, SP+WDRR, CoS/DSCP marking/remarking, bandwidth limiting
Redundancy Protocols	STP, RSTP, LACP, ERPS
Management Features	CLI, SNMP







# S5210 Series

1GE RJ-45 Downlink and 1/10GE SFP+ uplink ports

Non-blocking architecture

Built-in surge protection on all ports

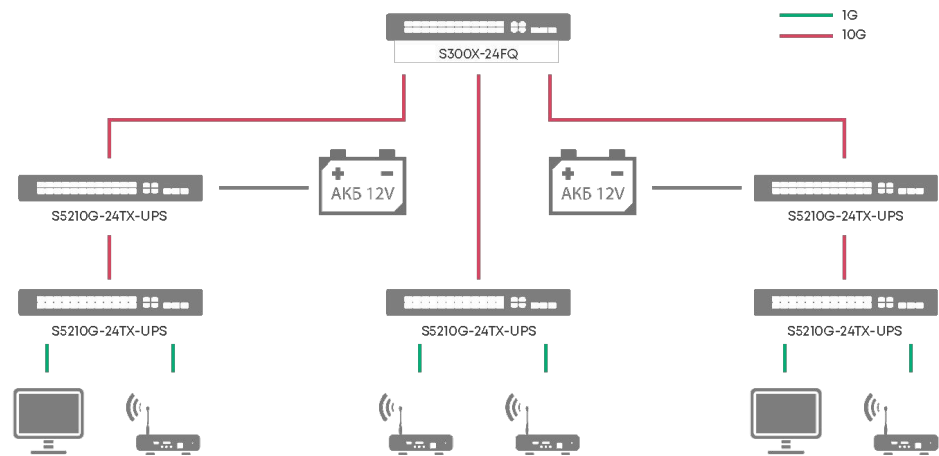
Static routing

Power redundancy options (-DC, -RPS, -UPS) with power monitoring

SNR S5210 Series switches are versatile Gigabit Ethernet L2+ switches designed for access and aggregation layers. Various power redundancy options and power monitoring support enable the deployment of fault-tolerant networks for carriers and Enterprise segments.

## Key Features

VLAN	4094 VLAN, Voice-VLAN, Private-VLAN, MAC-VLAN, Port-based QinQ, Selective QinQ, VLAN-Translation
Interfaces	SNR-S5210G-24TX: 24 x 10/100/1000Base-T, 4 x 1/10GE SFP+ SNR-S5210G-24TX-POE: 24 x PoE 10/100/1000Base-T, 4 x 1/10GE SFP+ SNR-S5210G-8TX: 8 x 10/100/1000Base-T, 4 x 1/10GE SFP+ SNR-S5210G-8TX-POE - 8 x PoE 10/100/1000Base-T, 4 x 1/10GE SFP+
PoE	SNR-S5210G-24TX-POE: 802.3af/at 370 W SNR-S5210G-8TX-POE: 802.3af/at 125 W
MAC Address Table	16K
Security Features	1536 ACL rules IP ACL, MAC ACL, IP-MAC-Port binding, DHCP Snooping, DHCP Relay, DHCP Option 82 Broadcast/Multicast/Unicast traffic limiting, Loopback detection CPU traffic rate limiting
L2-Multicast	IGMPv1/v2/v3 Snooping, Multicast VLAN Replication (MVR), Multicast Source/Destination Control, Multicast Filter
L3 Features	Static routing, 512 routes, 2K ARP entries, 32 IP interfaces
QoS	8 queues per port, SP, WDRR, SP+WDRR, CoS/DSCP marking/remarking, bandwidth limiting
Redundancy Protocols	STP, RSTP, MSTP, ERPS, LACP
Power Redundancy Features	SNR-S5210G-24TX-UPS: 220V AC + 12V battery connector with charging capability SNR-S5210G-24TX-DC: 220V AC + 48V DC, power monitoring SNR-S5210G-24TX-RPS: 220V AC + 12V DC, power monitoring SNR-S5210G-8TX-UPS: 220V AC + 12V battery connector with charging capability SNR-S5210G-8TX-DC: 220V AC + 48V DC, power monitoring SNR-S5210G-8TX-RPS: 220V AC + 12V DC, power monitoring
Management Features	CLI, SNMP







# S5310G Series

Active cooling system

Static routing

Built-in surge protection on all copper ports

Integrated security features

48x 10/100/1000Base-T and 6x 1/10GE SFP+ ports (with 100Mbps support)

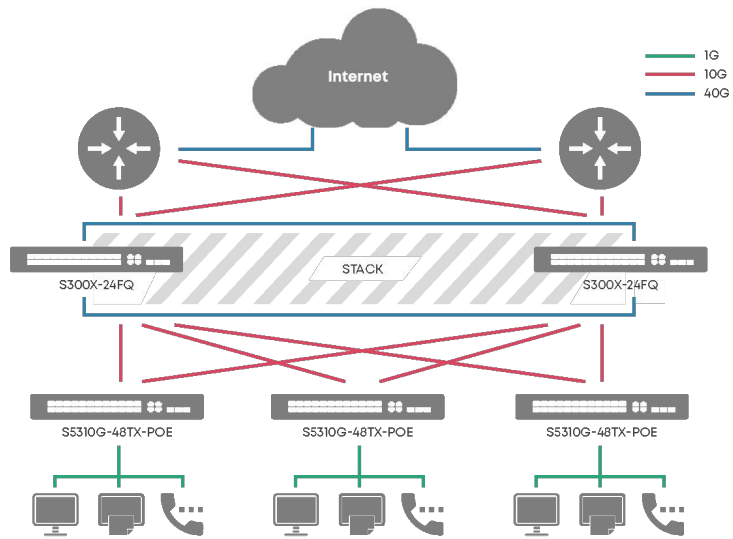
Advanced functionality for enterprise and carrier networks

S5310G Series – L2+ access switches with 6x 1/10GE SFP+ uplinks and 48x 1GE RJ-45 downlinks. Designed for carrier access layers and enterprise networks, these switches offer advanced functionality as a cost-effective solution for gigabit access deployment.

Full PoE 802.3at/af support on all 48 ports powers IP/video phones and Wi-Fi access points directly, reducing TCO (Total Cost of Ownership) and simplifying infrastructure maintenance.

## Key Features

VLAN	4094 VLAN, Voice-VLAN, Private-VLAN, MAC-VLAN, Port-based QinQ, Selective QinQ, VLAN-Translation
Interfaces	SNR-S5310G-48TX: 48 x 10/100/1000Base-T, 6 x 1/10GE SFP+ SNR-S5310G-48TX-POE: 48 x PoE 10/100/1000Base-T, 6 x 1/10GE SFP+ SNR-S5311G-48TX-POE: 48 x PoE 10/100/1000Base-T, 6 x 1/10GE SFP+
PoE	SNR-S5310G-48TX-POE: 802.3af/at 450 W SNR-S5311G-48TX-POE: 802.3af/at 380/760 W (depending on number of installed power supplies)
MAC Address Table	32K
Security Features	3840 ACL rules IP ACL, MAC ACL, IP-MAC-Port binding, DHCP Snooping, DHCP Relay, DHCP Option 82 Broadcast/Multicast/Unicast traffic limiting, Loopback detection CPU traffic rate limiting
L2-Multicast	IGMPv1/v2/v3 Snooping, Multicast VLAN Replication (MVR), Multicast Source/Destination Control, Multicast Filter
L3 Features	Static routing, 12K routes, 8K ARP entries, 64 IP interfaces
QoS	8 queues per port, SP, WDRR, SP+WDRR, CoS/DSCP marking/remarking, bandwidth limiting
Redundancy Protocols	STP, RSTP, MSTP, ERPS, LACP
Power Redundancy Features	SNR-S5310G-48TX-2AC: 220V AC + 220V AC, power monitoring SNR-S5310G-48TX-DC: 220V AC + 48V DC, power monitoring SNR-S5310G-48TX-2DC: 48V DC + 48V DC, power monitoring SNR-S5311G-48TX-POE: Dual Hot Swap power supplies, power monitoring SNR-S5310G-48TX-RPS: 220V AC + 12V DC, power monitoring SNR-S5310G-48TX-UPS: 220V AC + 12V battery connector with charging capability
Management Features	CLI, SNMP





# S2982G Series

Cost-effective carrier-grade solution

Gigabit uplink and downlink ports

Line-rate switching performance

Comprehensive security features

Easy configuration via Cisco-like CLI and web interface

Fast-convergence redundancy protocols

Built-in surge protection on all ports

S2982G Series switches provide a reliable and feature-rich solution for Gigabit Ethernet access in carrier and enterprise networks, with full support for all necessary functionality.

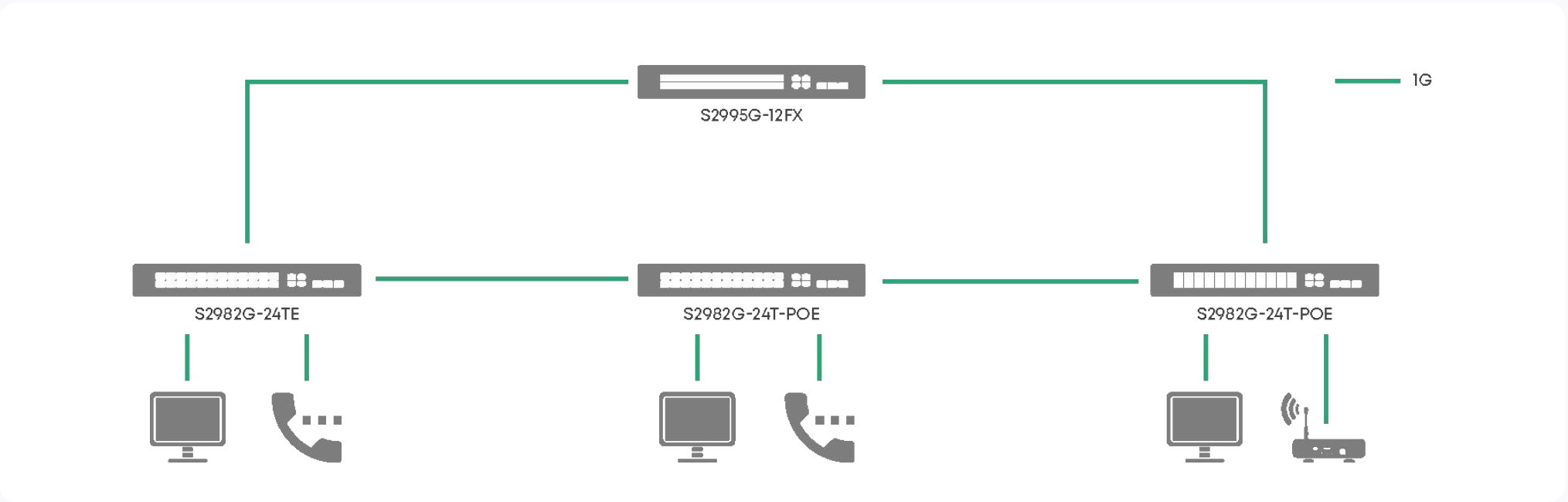
Additionally, select models support PoE 802.3af and PoE+ 802.3at standards. PoE technology reduces total cost of ownership (TCO) and simplifies network maintenance by powering Wi-Fi access points, IP/video phones, and thin clients directly from the switch.

The software for popular series (S2962/S2965/S2982G/S2985G) shares a unified codebase. Combined with identical SNR CLI and a common MIB file, this streamlines deployment and network maintenance.



## Key Features

VLAN	4094 VLAN, Voice-VLAN, Private-VLAN, MAC-VLAN, Port-based QinQ, Selective QinQ, VLAN Translation
Interfaces	SNR-S2982G-8T (-RPS   -UPS   -DC): 8 x 10/100/1000Base-T, 2 x 100/1000Base-X SFP SNR-S2982G-24TE (-RPS   -UPS   -DC): 24 x 10/100/1000Base-T, 4 x 100/1000Base-X SFP SNR-S2982G-24T-POE (-E): 24x PoE 10/100/1000Base-T, 4 x 100/1000Base-X SFP
PoE	SNR-S2982G-24T-POE: 802.3af/at 185 W SNR-S2982G-24T-POE-E: 802.3af/at 370 W
MAC Address Table	8K
Security Features	1408 ACL rules IP ACL, MAC ACL, MAC-IP ACL, Userdefined ACL Port-Security, IP-MAC-Port binding, DHCP Snooping, DHCP Relay, DHCP Option 82 Broadcast/Multicast/Unicast traffic limiting, Loopback detection, 802.1x, MAB CPU traffic rate limiting
L2-Multicast	IGMPv1/v2/v3 Snooping, Multicast VLAN Replication (MVR), Multicast Source/Destination Control, Multicast Filter
QoS	8 queues per port, SP / WRR / DWRR / SP+WRR / SP+DWRR, CoS/DSCP marking/remarking, bandwidth limiting
Redundancy Protocols	STP, RSTP, MSTP, ERPS, LACP
Management Features	CLI, WEB, SNMP
Power Redundancy Features	SNR-S2982G-8T-RPS: 220V AC + 12V RPS port SNR-S2982G-8T-UPS: 220V AC + 12V battery connector with charging capability SNR-S2982G-24TE-RPS: 220V AC + 12V DC SNR-S2982G-24TE-UPS: 220V AC + 12V battery connector with charging capability SNR-S2982G-24TE-DC: 220V AC + 48V DC SNR-S2982G-8T-DC: 220V AC + 48V DC







# S2985G Series

Gigabit uplink and downlink ports

Comprehensive security features

Non-blocking architecture

Power redundancy

Easy configuration via Cisco-like CLI and web interface

Built-in surge protection on all ports

S2985G Series switches offer a reliable and feature-rich solution for Gigabit Ethernet access in both carrier and enterprise networks. Supporting all necessary functionality for creating secure and fault-tolerant networks, this series ensures investment protection and high performance.

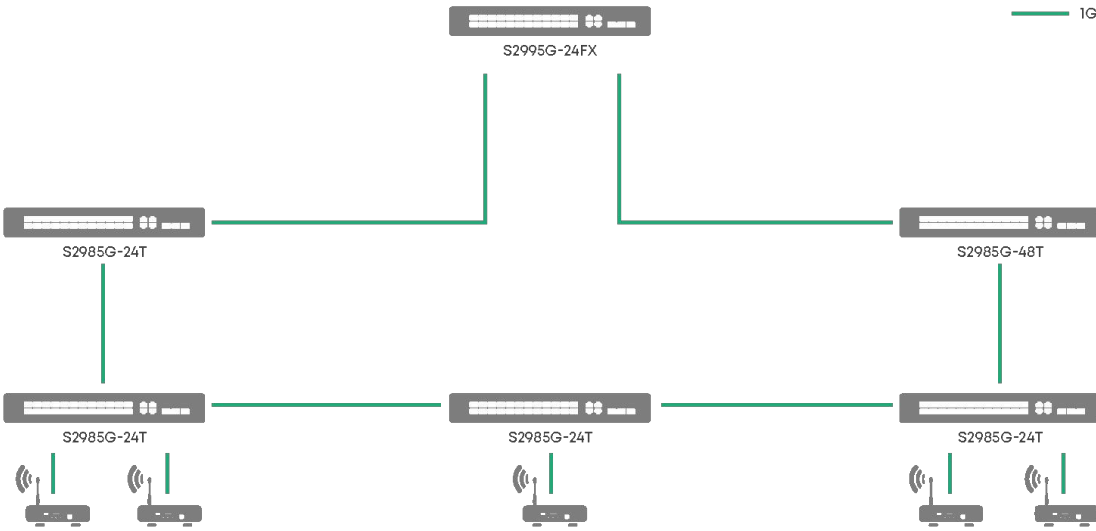
The software for popular series (S2962/S2965/S2982G/S2985G) shares a unified codebase. Combined with identical SNR CLI and a common MIB file, this simplifies deployment and network maintenance.

The SNR-S2985G-8T-POE model, with PoE support, delivers power directly to IP phones, wireless access points, and IP cameras from the switch.

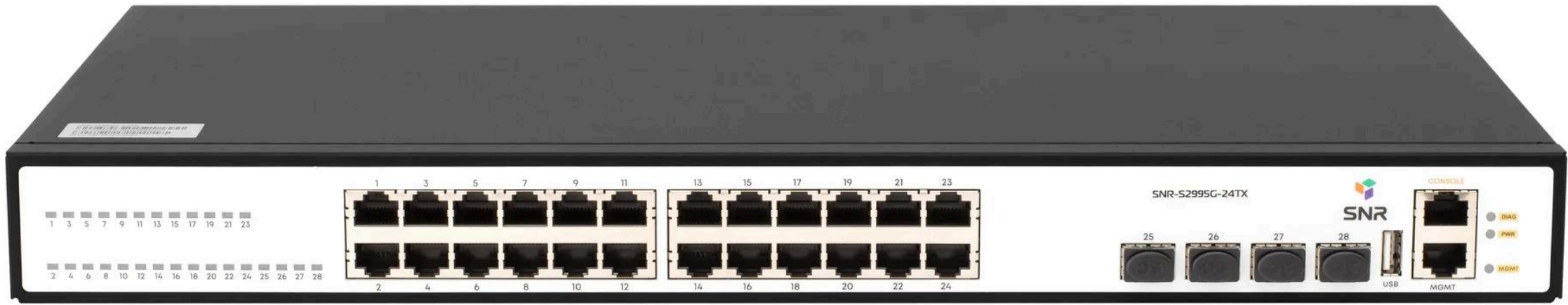
Models with an RPS port allow connection of a 12V DC backup power supply. Additionally, the SNR-S2985G-24T-UPS model includes a 12V battery connector (5-20Ah capacity) and features a built-in battery charge/discharge controller.

## Key Features

VLAN	4094 VLAN, Voice-VLAN, Private-VLAN, MAC-VLAN, Port-based QinQ, Selective QinQ, VLAN Translation
Interfaces	SNR-S2985G-8T-POE (-DC): 8 x PoE 10/100/1000Base-T, 2 x 100/1000Base-X SFP SNR-S2985G-24T (-UPS   -RPS   -DC): 24 x 10/100/1000Base-T, 4 x 100/1000Base-X SFP SNR-S2985G-48T (-RPS   -DC): 48 x 10/100/1000Base-T, 4 x 100/1000Base-X SFP SNR-S2985G-24TC (-RPS   -DC): 24 x 10/100/1000Base-T, SFP 1GE, 2 x 100/1000Base-X SFP
PoE	SNR-S2985G-8T-POE: 802.3af/at 124 W
MAC Address Table	SNR-S2985G-8T-POE: 8K Other models: 16K
Security Features	SNR-S2985G-8T-POE: 1408 ACL rules Other models: 2K ACL rules IP ACL, MAC ACL, MAC-IP ACL, Userdefined ACL Port-Security, IP-MAC-Port binding, DHCP Snooping, DHCP Relay, DHCP Option 82 Broadcast/Multicast/Unicast traffic limiting, Loopback detection, 802.1x, MAB CPU traffic rate limiting
L2-Multicast	IGMPv1/v2/v3 Snooping, Multicast VLAN Replication (MVR), Multicast Source/Destination Control, Multicast Filter
QoS	8 queues per port, SP / WRR / DWRR / SP+WRR / SP+DWRR, CoS/DSCP marking/remarking, bandwidth limiting
Redundancy Protocols	STP, RSTP, MSTP, ERPS, LACP
Management Features	CLI, WEB, SNMP
Power Redundancy Features	SNR-S2985G-8T-POE-DC: 220V AC + 48V DC SNR-S2985G-24T-RPS, SNR-S2985G-48T-RPS, SNR-S2985G-24TC-RPS: 220V AC + 12V DC SNR-S2985G-24T-DC, SNR-S2985G-24TC-DC: 48V DC SNR-S2985G-24T-UPS: 220V AC + 12V battery connector with charging capability, power monitoring, battery voltage monitoring







# S2995G Series

1GE Downlink and 1/10GE uplink ports

OSPF, BGP, PIM, 1K IPv4 routes

Non-blocking architecture

Stacking via standard interfaces

Easy configuration via unified CLI and web interface

Built-in surge protection on all ports

S2995G Series – L3 switches for end-user connectivity in carrier and enterprise networks. Featuring 24/48x 10/100/1000Base-T ports and 4x 1/10GE SFP+ uplinks, these switches excel in high-performance network deployments.

Fast-convergence L2 redundancy protocols enable flexible, fault-tolerant networks, while Multicast/Unicast routing support (BGP, MSDP, OSPF, PIM) extends application versatility.

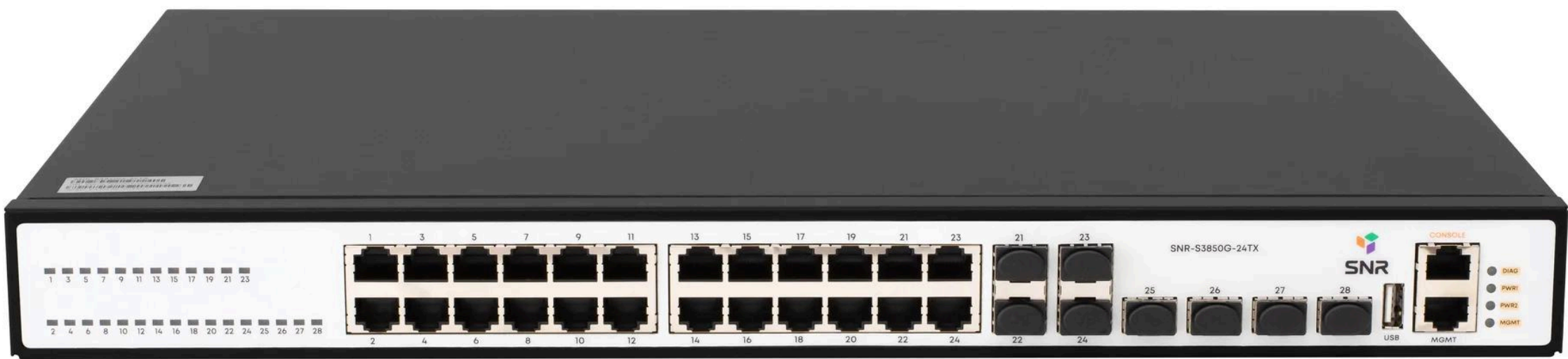
Additionally, the S2995G series switches feature the standard SNR CLI and SNMP MIB, simplifying network deployment and maintenance, while PoE-supported models can directly power IP phones, access points, and IP cameras from the switch.

## Key Features

VLAN	4094 VLAN, Voice-VLAN, Private-VLAN, MAC-VLAN, Port-based QinQ, Selective QinQ, VLAN Translation
Interfaces	SNR-S2995G-24TX (-RPS   -UPS   -DC): 24 x 10/100/1000Base-T SFP, 4 x 1/10GE SFP+ SNR-S2995G-24TX-POE: 20 x 10/100/1000Base-T, 4 x Combo 100/1000Base-X SFP   10/100/1000Base-T, 4 x 1/10GE SFP+ *SNR-S2995G-48TX (-RPS   -POE): 48 x 10/100/1000Base-T SFP, 4 x 1/10GE SFP+
PoE	SNR-S2995G-24TX-POE: 802.3af/at 370 W *SNR-S2995G-48TX-POE: 802.3af/at 740 W
MAC Address Table	16K
Security Features	SNR-S2995G-48TX-POE: 444 ACL rules; for other models: 1K IP ACL, MAC ACL, MAC-IP ACL, Userdefined ACL Port-Security, IP-MAC-Port binding, DHCP Snooping, DHCP Relay, DHCP Option 82 Broadcast/Multicast/Unicast traffic limiting, Loopback detection, 802.1x, MAB CPU traffic rate limiting
L3 Features	Static routing, dynamic routing: RIP, OSPFv2/v3, BGPv4+ Multicast routing: PIM-SM, PIM-DM, PIM-SSM, MSDP SNR-S2995G-48TX-POE: IPv4 routing table size - 512 For other models: 1K
L2-Multicast	IGMPv1/v2/v3 Snooping, Multicast VLAN Replication (MVR), Multicast Source/Destination Control, Multicast Filter
QoS	8 queues per port, DWRR / SP / SP+DWRR, CoS/DSCP marking/remarking, bandwidth limiting
Redundancy Protocols	STP, RSTP, MSTP, ERPS, LACP
Management Features	CLI, WEB, SNMP
Power Redundancy Features	SNR-S2995G-24TX-RPS: SNR-S2995G-48TX-RPS: 220V AC + 12V DC SNR-S2995G-24TX-UPS: 220V AC + 12V battery connector with charging capability SNR-S2995G-48TX-POE: 220V AC + 52-57V DC

\*SNR-S2995G-48TX-POE differs from base models - see full specifications





# S3850G Series

1GE Downlink and 1/10GE uplink ports

OSPF, BGP, PIM, 13K IPv4 route

Non-blocking architecture

Easy configuration via unified CLI and web interface

Stacking via standard interfaces

Built-in surge protection on all ports

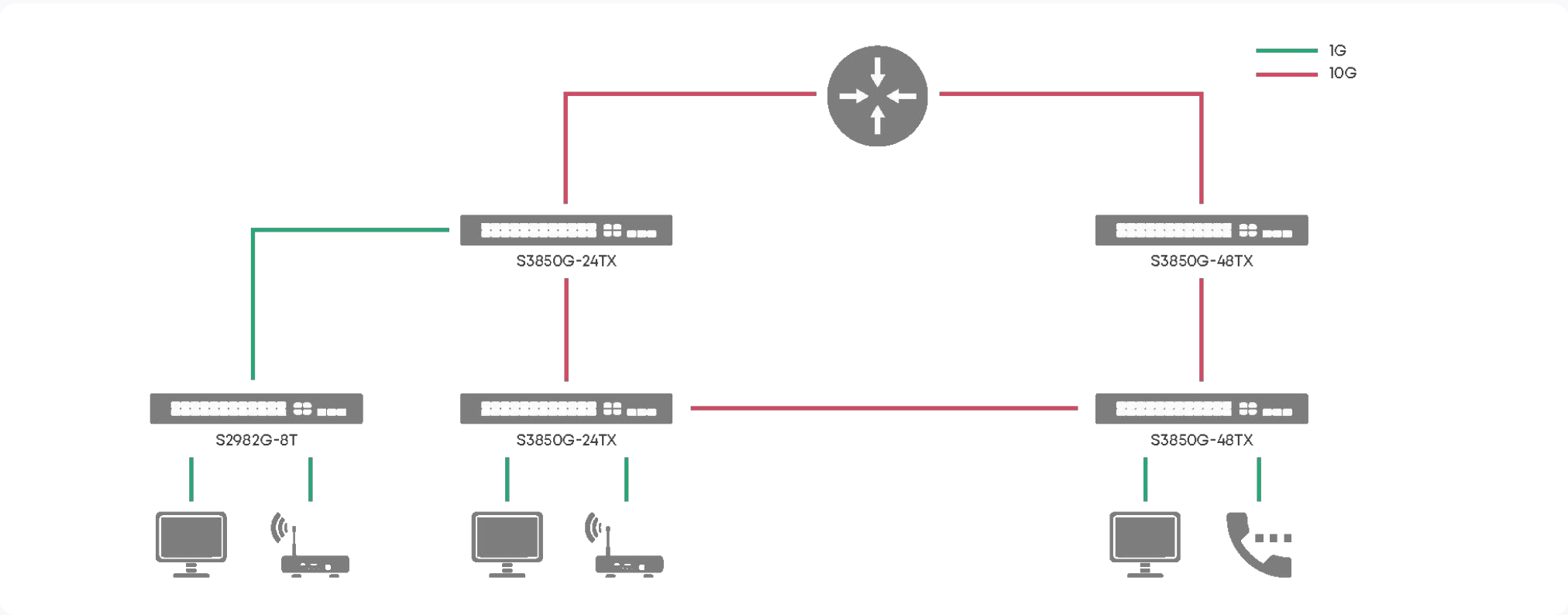
The S3850G Series are L3 switches designed for end-user connectivity in carrier and enterprise networks. These switches feature 24/48x 10/100/1000Base-T ports and 4x 1/10GE SFP+ uplinks, making them ideal for building high-performance networks.

Fast-convergence L2 redundancy protocols enable flexible and fault-tolerant network architectures, while support for multicast/unicast routing protocols (MBGP, MSDP, OSPF, PIM) expands their application scope.

The switches come with standard SNR CLI and SNMP MIB for easy deployment and maintenance, and dual built-in AC power supplies provide out-of-the-box power redundancy.

## Key Features

VLAN	4094 VLAN, Voice-VLAN, Private-VLAN, MAC-VLAN, Port-based QinQ, Selective QinQ, VLAN Translation
Interfaces	SNR-S3850G-24TX: 20 x 10/100/1000Base-T, 4 x Combo 100/1000Base-X SFP   10/100/1000Base-T, 4x 1/10GE SFP+ SNR-S3850G-48TX: 48 x 10/100/1000Base-T, 4 x 1/10GE SFP+
MAC Address Table	16K
Security Features	3K ACL rules IP ACL, MAC ACL, MAC-IP ACL, Userdefined ACL Port-Security, IP-MAC-Port binding, DHCP Snooping, DHCP Relay, DHCP Option 82 Broadcast/Multicast/Unicast traffic limiting, Loopback detection, 802.1x, MAB CPU traffic rate limiting
L3 Features	Static routing, dynamic routing: RIP, OSPFv2/v3, BGPv4+ Multicast routing: PIM-SM, PIM-DM, PIM-SSM, MSDP IPv4 routing table size: 13K
L2-Multicast	IGMPv1/v2/v3 Snooping, Multicast VLAN Replication (MVR), Multicast Source/Destination Control, Multicast Filter
QoS	8 queues per port, DWRR / SP / SP+DWRR, CoS/DSCP marking/remarking, bandwidth limiting
Redundancy Protocols	STP, RSTP, MSTP, ERPS, LACP
Management Features	CLI, WEB, SNMP
Power Redundancy Features	SNR-S3850G-24TX: 220V AC + 220V AC SNR-S3850G-48TX: 220V AC + 220V AC







# SNR-S2962-24T

Cost-effective carrier-grade solution

Fast Ethernet switch with line-rate performance

Increased number of Gigabit Ethernet ports

Fast-convergence redundancy protocols

Easy configuration via Cisco-like CLI and web interface

Built-in surge protection on all ports

The series includes one switch model: SNR-S2962-24T. This switch features Fast Ethernet + Gigabit Ethernet downlinks and Gigabit Ethernet SFP uplinks. The SNR-S2962-24T supports all necessary functionality for deployment at the access layer in modern enterprise networks and carrier infrastructures.

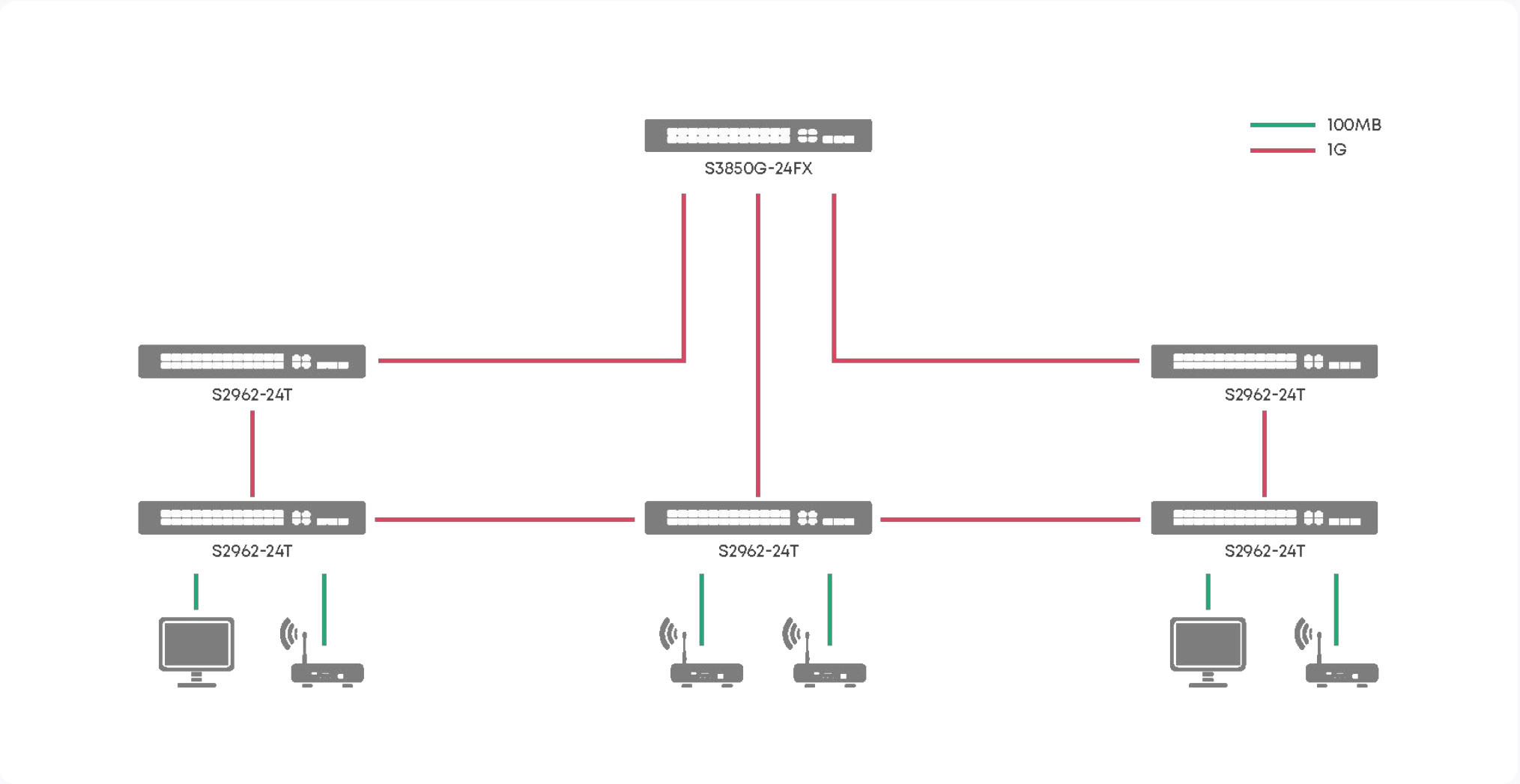
Additional Gigabit ports can be used to connect premium-tier customers at speeds up to 1 Gbps, enabling ARPU growth without hardware replacement.

The software for popular series (S2962/S2965/S2982G/S2985G) shares a unified codebase. Combined with identical SNR CLI and a common MIB file, this simplifies network deployment and maintenance.

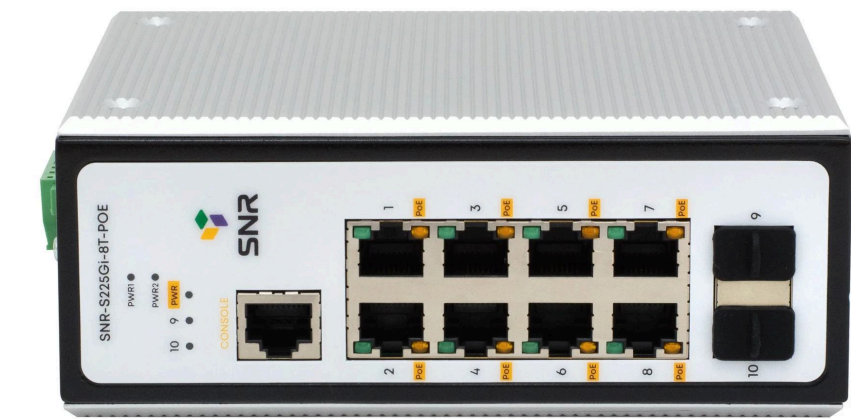


## Key Features

VLAN	4094 VLAN, Voice-VLAN, Private-VLAN, MAC-VLAN, Port-based QinQ, Selective QinQ, VLAN Translation
Interfaces	20 x 10/100Base-TX, 4 x 10/100/1000Base-T, 4 x 100/1000Base-X SFP
MAC Address Table	8K
Security Features	1408 ACL rules IP ACL, MAC ACL, MAC-IP ACL, Userdefined ACL Port-Security, IP-MAC-Port binding, DHCP Snooping, DHCP Relay, DHCP Option 82 Broadcast/Multicast/Unicast traffic limiting, Loopback detection, 802.1x, MAB CPU traffic rate limiting
L2-Multicast	IGMPv1/v2/v3 Snooping, Multicast VLAN Replication (MVR), Multicast Source/Destination Control, Multicast Filter
QoS	8 queues per port, SP / WRR / DWRR / SP+WRR / SP+DWRR, CoS/DSCP marking/remarking, bandwidth limiting
Redundancy Protocols	STP, RSTP, MSTP, ERPS, LACP
Management Features	CLI, WEB, SNMP
Power Redundancy Features	SNR-S2962-24T-RPS: 220V AC + 12V DC SNR-S2962-24T-UPS: 220V AC + 12V battery connector with charging capability







# SNR-S225Gi-8T-POE

8 GE PoE 802.3af/at ports

2 GE SFP ports

IP40 rating

Operating temperature range:  
-40 to +85°C

Total PoE power: 240 W

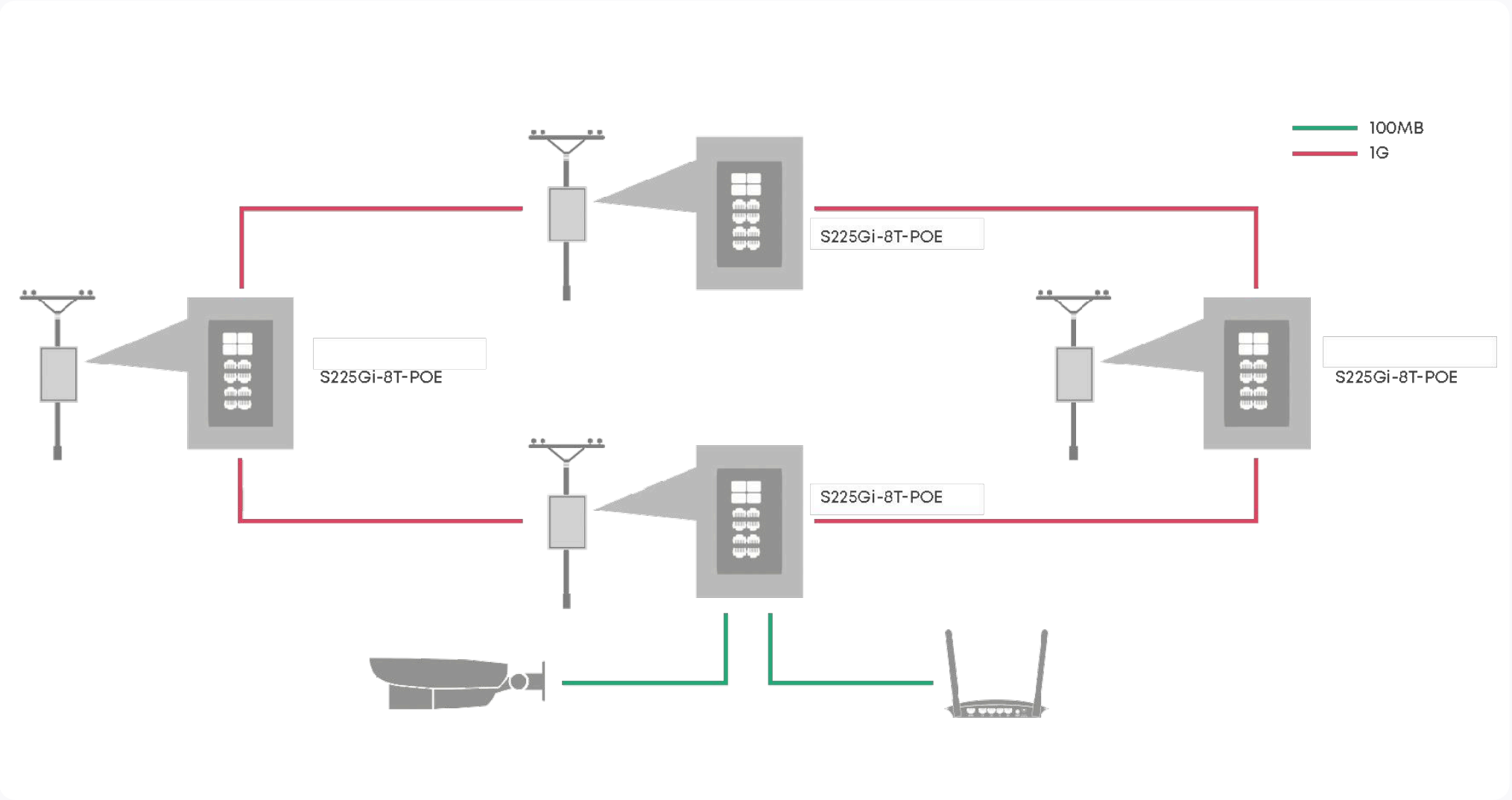
Industrial PoE switch SNR-S225Gi-8T-POE is an ideal solution for outdoor equipment in smart networks. The switch features an industrial-grade housing, DIN-rail mounting, and efficient passive cooling. Modern components ensure reliable operation across a wide temperature range from -40 to +85°C.

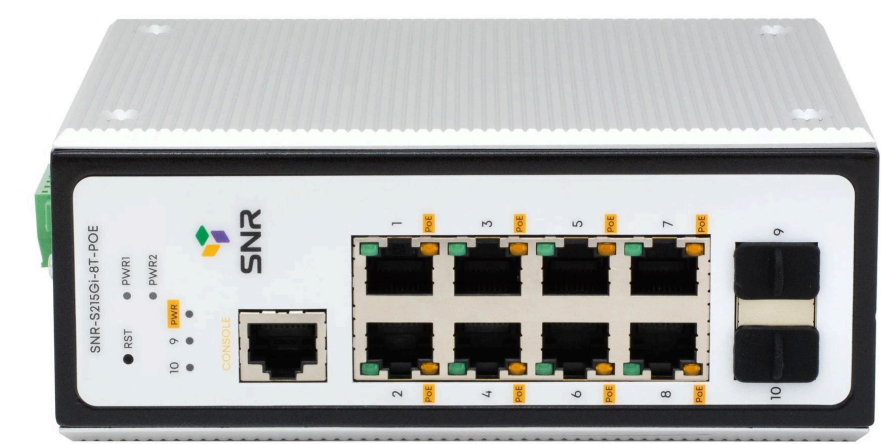
The SNR-S225Gi-8T-POE provides all necessary functionality for enterprise and carrier networks, including comprehensive security, monitoring, and management features. It supports RSTP, ERPS, and LACP protocols, enabling fault-tolerant topologies with fast convergence times.



## Key Features

VLAN	4094 VLAN, Voice-VLAN, Private-VLAN, MAC-VLAN, Port-based QinQ, Selective QinQ, VLAN Translation
Interfaces	8 x PoE 10/100/1000Base-T, 2 x 100/1000Base-X SFP
PoE	802.3af/at 240 W
MAC Address Table	8K
Security Features	1408 ACL rules IP ACL, MAC ACL, MAC-IP ACL, Userdefined ACL Port-Security, IP-MAC-Port binding, DHCP Snooping, DHCP Relay, DHCP Option 82 Broadcast/Multicast/Unicast traffic limiting. Loopback detection. 802.1x, MAB CPU traffic rate limiting
L2-Multicast	IGMPv1/V2/V3 Snooping, Multicast VLAN Replication (MVR), Multicast Source/Destination Control, Multicast Filter
QoS	8 queues per port, SP, WRR, SP+WRR, DWRR. CoS/DSCP marking/remarking. Bandwidth limiting
Redundancy Protocols	STP, RSTP, MSTP, ERPS, LACP
Management Features	CLI, WEB, SNMP





# SNR-S215Gi-8T-POE

8 GE PoE 802.3af/at ports

2 GE SFP ports

IP40 rating

Operating temperature range: -40 to +85°C

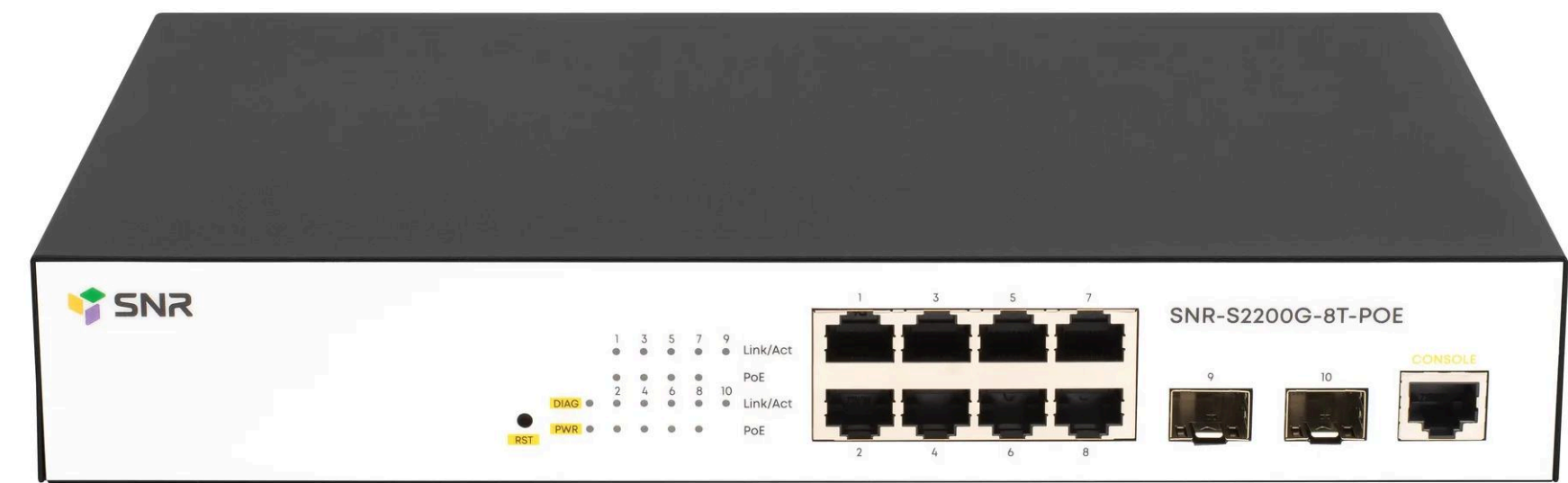
Total PoE power: 180 W

Industrial PoE switch SNR-S215Gi-8T-POE is designed for operation in harsh environments. The model offers a full set of features configurable via a simple and user-friendly web interface.

The equipment has an IP40 protection rating and an extended operating temperature range (from -40 to +85°C).

## Key Features

VLAN	4094 VLAN
Interfaces	8 x 10/100Base-TX PoE 802.3af/at, 2 x 100/1000Base-X SFP
PoE	802.3af/at, up to 30W per port, up to 180W per switch
MAC Address Table	8K
L2-Multicast	IGMPv1/V2/V3 Snooping, Multicast VLAN Replication (MVR)
QoS	8 queues per port, SP, WRR, SP+WRR. Bandwidth limiting.
Redundancy Protocols	STP, RSTP, MSTP, LACP
Management Features	WEB, SNMP



# S2200G-8T-POE

8 PoE 802.3af/at ports

2 GE SFP ports

Operating temperature range:  
0 to +45°C

Total PoE power: 100 W

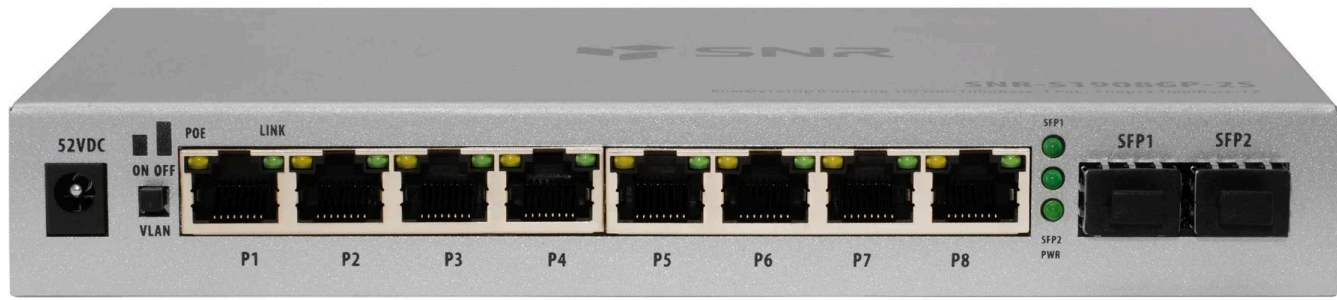
SNR-S2200G-8T-POE – a WEB Smart PoE switch featuring 2x 100/1000Base-X SFP ports and 8x 10/100/1000Base-T ports with PoE 802.3af/at support.

Full PoE 802.3at/af support on all 8 ports powers IP/video phones, Wi-Fi access points, and thin clients directly from the switch, reducing TCO (Total Cost of Ownership) and simplifying infrastructure maintenance. The built-in web interface ensures easy and convenient switch configuration.

## Key Features

VLAN	4094 VLAN
Interfaces	8 x 10/100Base-TX PoE 802.3af/at, 2 x 100/1000Base-X SFP
PoE	802.3af/at, up to 30W per port, up to 100W per switch
MAC Address Table	8K
L2-Multicast	IGMPv1/V2/V3 Snooping, Multicast VLAN Replication (MVR)
QoS	8 queues per port, SP, WRR, SP+WRR. Bandwidth limiting.
Redundancy Protocols	STP, RSTP, MSTP, LACP
Management Features	WEB, SNMP





## S1900 Series

4–16 copper FE/GE ports

1–2 GE SFP interfaces

Non-blocking architecture

Copper port isolation functionality

Metal housing

SNR-S1900 Series – unmanaged Ethernet switches designed for small network deployment and expansion. SFP interfaces enable remote site connectivity, while the metal housing provides protection against physical damage. These switches are ideal for cost-effective communication service solutions in low-rise buildings.

SNR-S1900 switches support copper port isolation, which limits traffic propagation in broadcast domains and significantly reduces the risk of broadcast storms.

Models SNR-S1904GP-2S and SNR-S1908GP-2S support PoE 802.3af and PoE+ 802.3at standards.

PoE technology reduces TCO (Total Cost of Ownership) and simplifies network maintenance by powering Wi-Fi access points, IP/video phones, and thin clients directly from the switch.



## S1000/S1100G Series

5–8 copper FE/GE ports

Non-blocking architecture

Compact form factor

Auto MDI/MDI-X

SNR-S1000 and SNR-S1100G Series – unmanaged Ethernet switches designed for home networks and small office network deployment/expansion. Each copper port supports auto-negotiation of speed/duplex and auto MDI/MDI-X crossover.

The series features an ultra-compact form factor for flexible installation and low power consumption.



# Power redundancy with SNR switches

Depending on the power scheme at the network node, SNR switches can be customized to the following variants:

220V AC + 12V DC

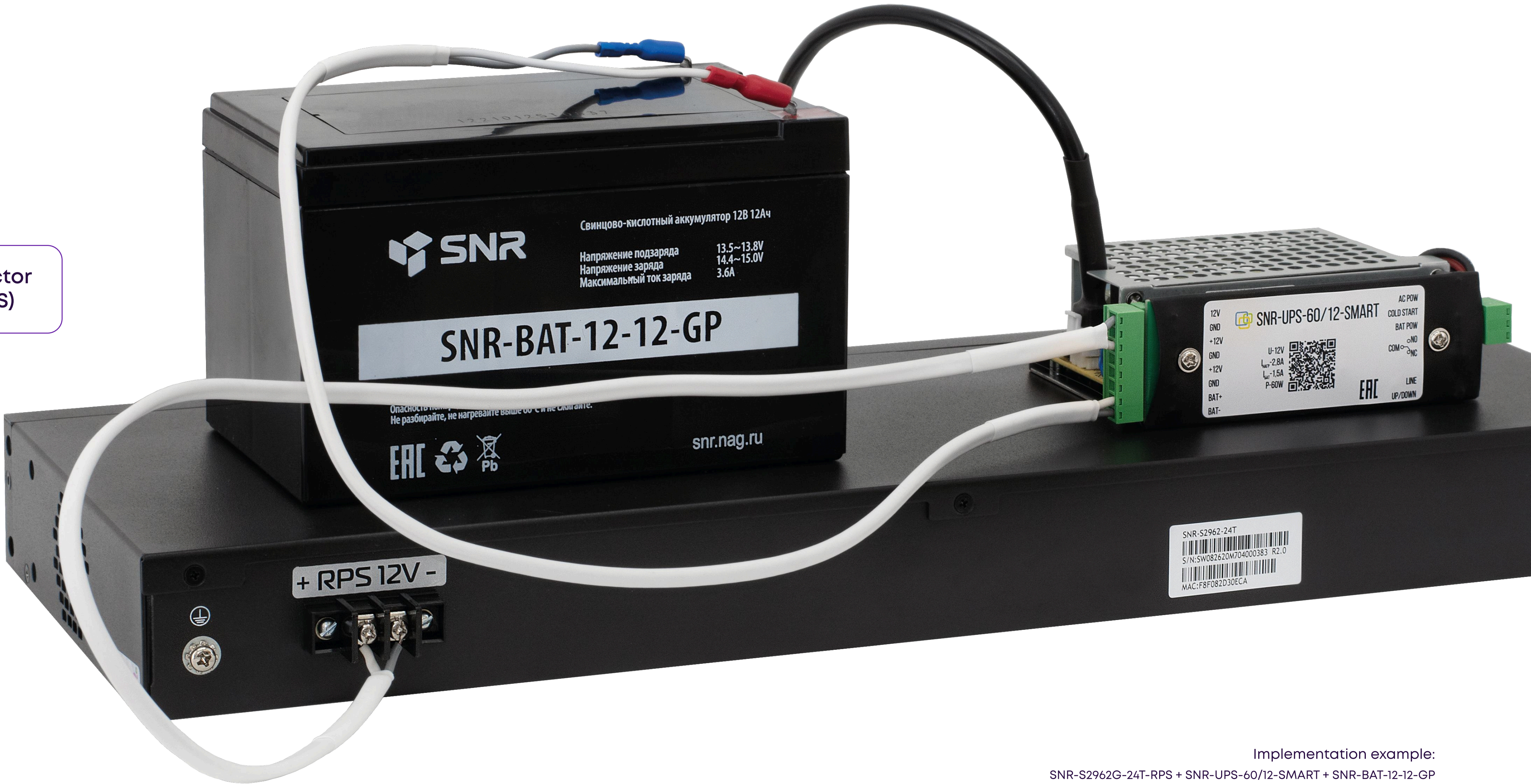
220V AC + 48V DC

220V AC + 12V battery connector with charging capability (UPS)

220V AC + 220V AC

48V DC

48V DC + 48V DC



\*Customization options for specific models should be confirmed with your manager

Implementation example:  
SNR-S2962G-24T-RPS + SNR-UPS-60/12-SMART + SNR-BAT-12-12-GP



# About the company



Since its establishment in 2006, the company has become one of the leading global suppliers of networking and switching equipment, with its own research and development (R&D) and manufacturing facilities.

SNR offer a wide range of our own products and turnkey solutions to meet the needs of clients.

- Data transmission networks and corporate IT infrastructure
- Solutions for mobile operators
- Optical transport networks (DWDM)
- Data center solutions
- Cloud solutions and network security
- Voice and unified communication solutions

Commitment to continuous development and innovation enables us to provide our clients with the most modern and efficient solutions.



## 📍 Tashkent, Uzbekistan

52, 7th Sayram Street, Mirzo-Ulugbek District  
+998 55 508 0660  
[sales@nag.uz](mailto:sales@nag.uz)

## 📍 UAE, DUBAI

AL Garhoud Street 59, Al Garhoud Business Center, M floor, Office # M-03  
+971 0 42599967  
[sales@snr.global](mailto:sales@snr.global)

## 📍 Almaty, Kazakhstan

135 Zhibek Zholy Avenue, 6th floor, office 2061  
+7 727 344 344 4  
[sales@nag.kz](mailto:sales@nag.kz)