

# Maintenance Bypass and Output Installation for HTX11 6-10kVA

Materials list:

- 1. Maintenance bypass and output circuit breakers.
  - 2. Structure sets.
  - 3. Cables.
  - 4. Screws.
1. Remove the cover, 4 pcs screws on the back of cabinet, 2 screws on both sides of the cabinet, as is shown in figure 1.

**Notes:**

For standard model (Built-in batteries), there are another screws on the top of cabinet.

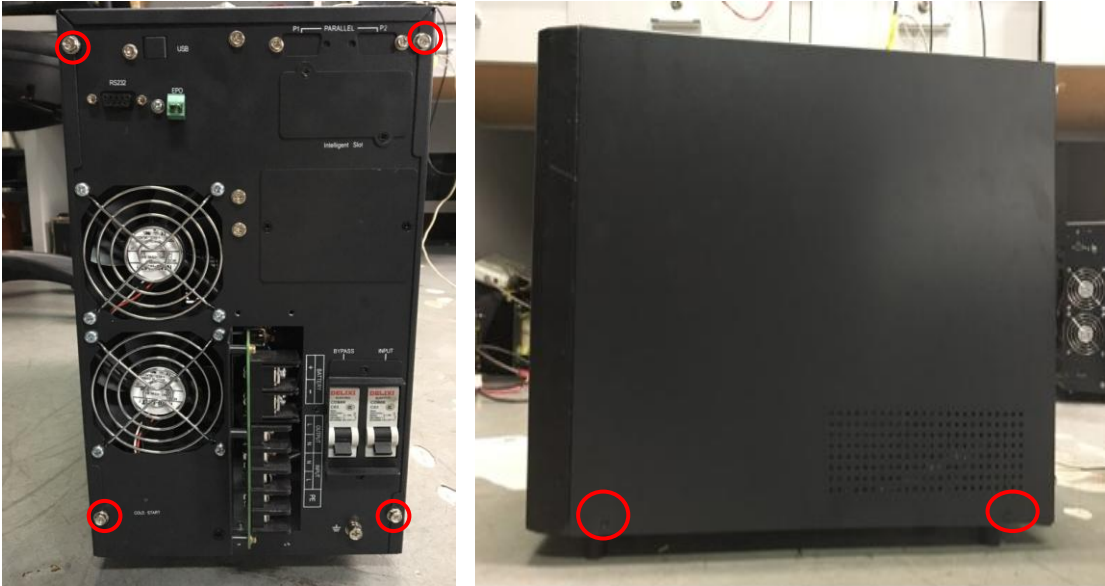


Figure 1 Remove cover

2. Remove the screws and covers of manual bypass and output from cabinet, as is shown in figure 2.

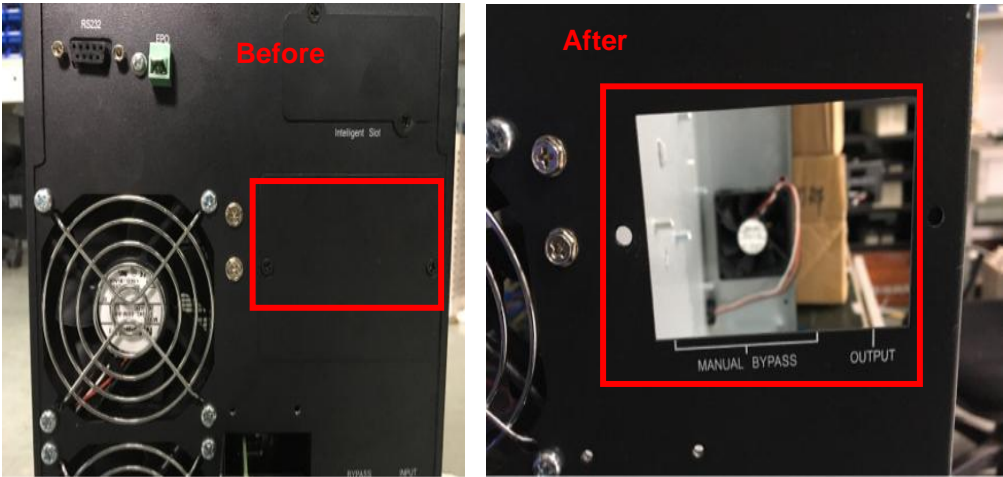


Figure 2 Remove the manual bypass and output cover

3. Fix circuit breakers to supporting structure sets, then connect cable W601\_CB3-1 to the top of pin2; W603\_CB3-2 connect to the bottom of pin2; W602\_CB3-3 connect to the top of pin3; W604\_CB3-4 connect to the bottom of pin 3; W501\_CB4-1 connect to the top of pin4; W502\_CB3-2 connect to the bottom of pin4; W605\_K-11 connect to the top of pin1; W605\_K-14 connect to the bottom of pin1, the other end connect to J13 of PS 1509\_DR1/DR2 (power board) through the hole, as is shown in figure 3.

Cable no.	Connect to
W601_CB3-1	Top of pin2
W603_CB3-2	Bottom of pin2
W602_CB3-3	Top of pin3
W604_CB3-4	Bottom of pin 3
W501_CB4-1	Top of pin4
W502_CB3-2	Bottom of pin4
W605_K-11	Top of pin1
W605_K-14	Bottom of pin1
	J13 (PS1509_DR1/DR2 power board)

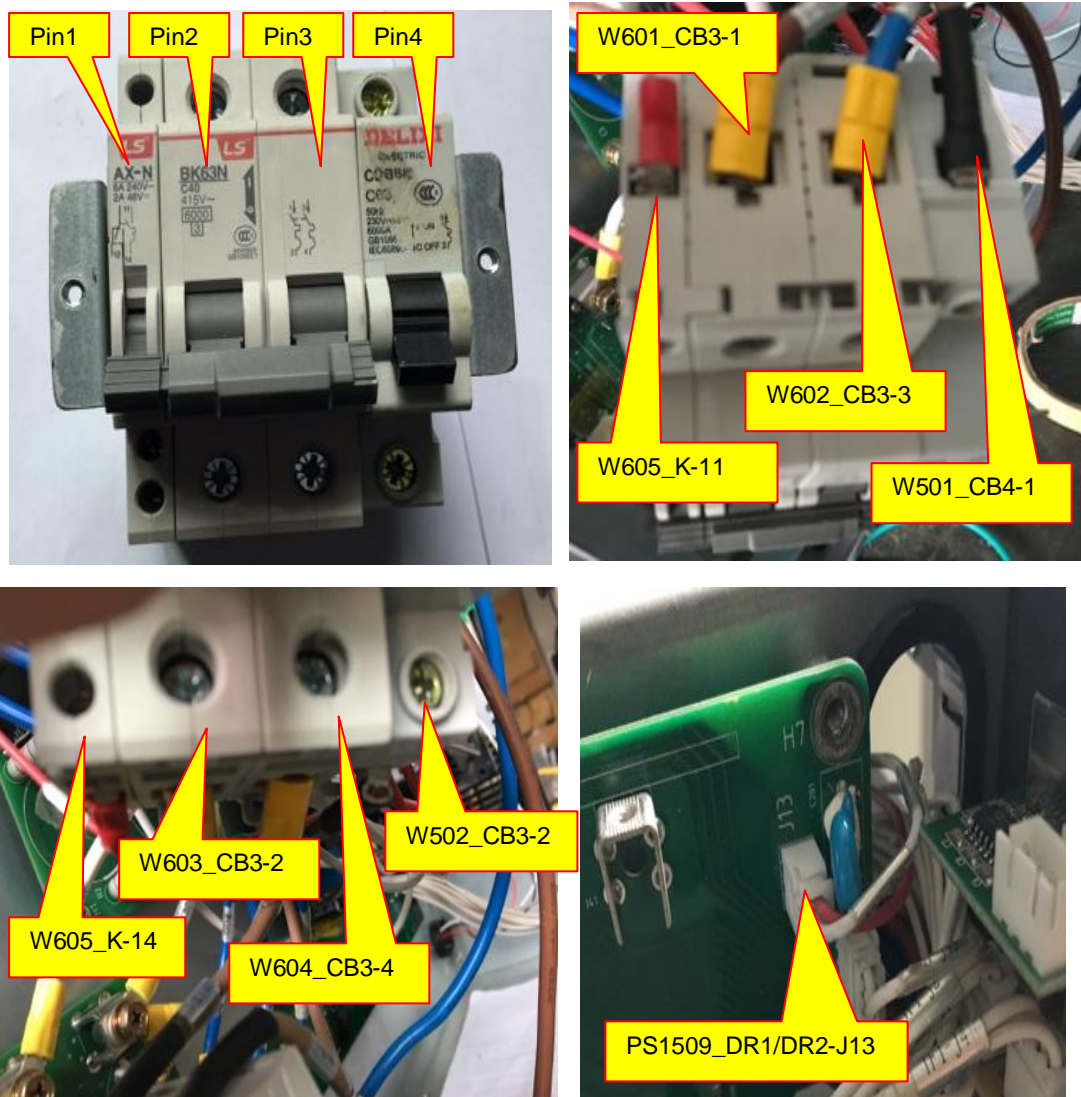


Figure 3 Cable connection

4. Remove the cable W12 from J22 of DR1/DR2 power board and J9 of EMI board, connect cable W501 to J22 of DR1/DR2 power board, connect W502 to J9 of EMI board; connect W601 to J7 of EMI board; connect W603 to J9 of EMI board, W602 connect to J8 of EMI board; W604 connect to J10 of EMI board, as is shown in figure 4.

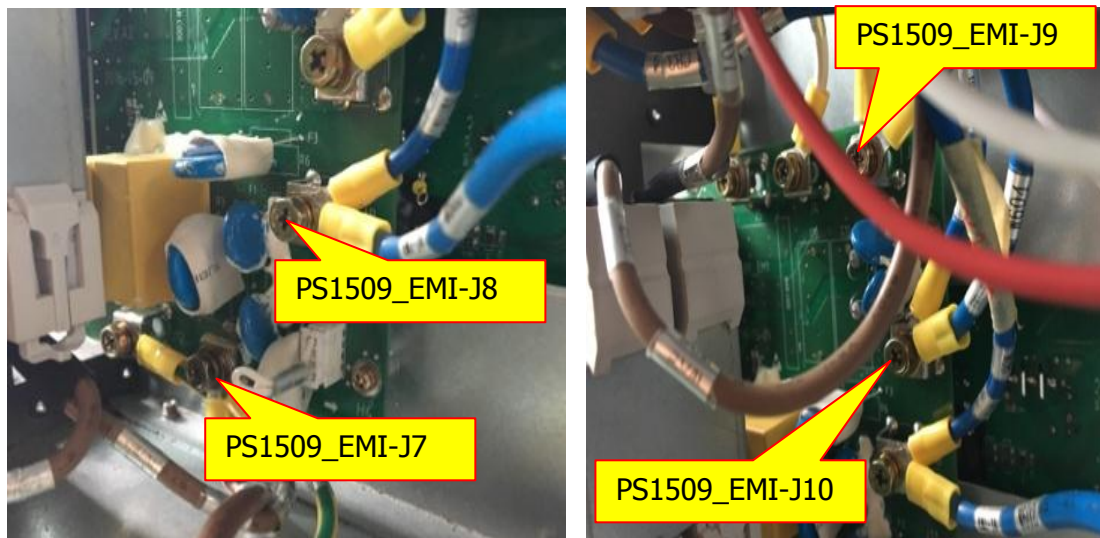


Figure 4 Cable connection

5. Fix the circuit breaker to UPS and lock the screws on both side, then fasten the breaker cover, as is shown in figure 5.

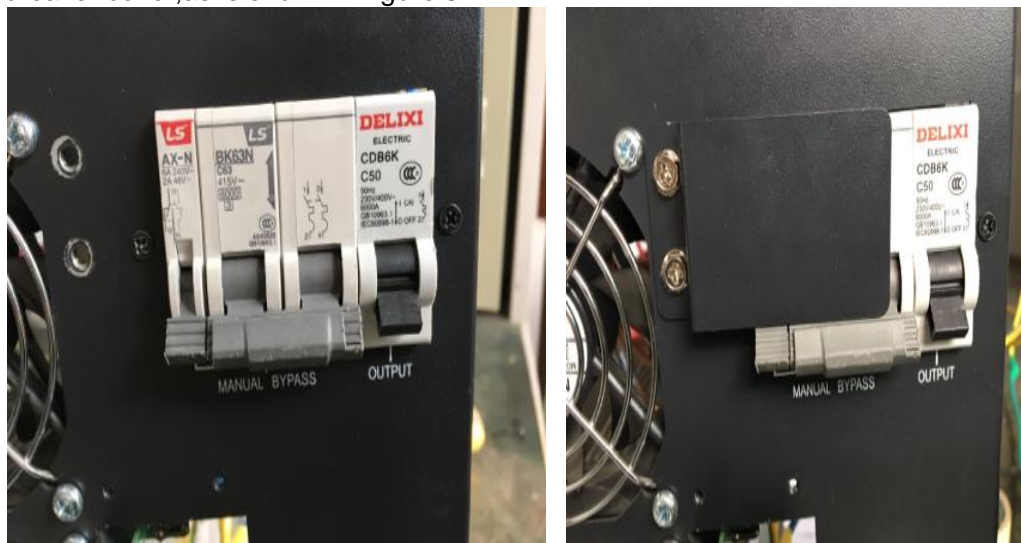


Figure 5 Breakers and baffle installation

6. Install back the cover of UPS.

**Note:**

For standard model (Built-in batteries), please install top cover first, then others.