

SNMP Installation Manual for HTX11 6-10kVA v1.0

Materials list:

1. SNMP board
2. Slot for SNMP board
3. Signal cable and screws

1. Remove the cover, 4 pcs screws on the back of cabinet, 2 screws on both sides of the cabinet, as is shown in figure 1.

Notes:

For standard model (Built-in batteries), there are another screws on the top of cabinet.

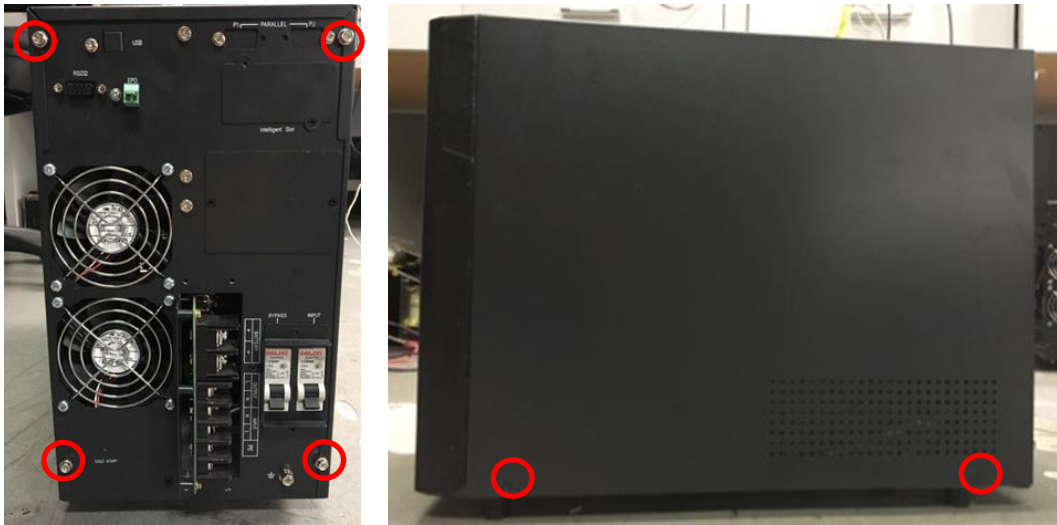


Figure 1 Remove cover

2. Remove the plate of intelligent slot, as is shown in figure 2.

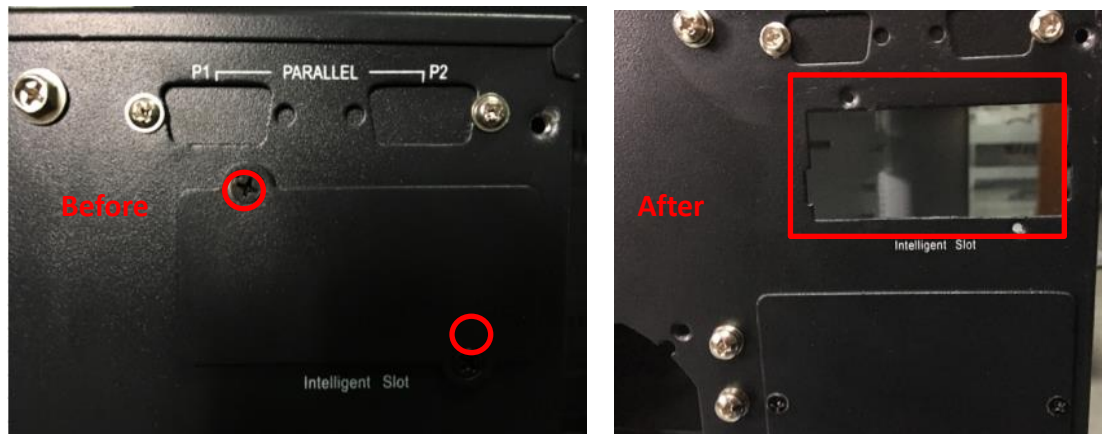


Figure 2 Remove plate of intelligent slot

3. Connect the 26 pins terminal of signal cable with slot, as is shown in figure 3.

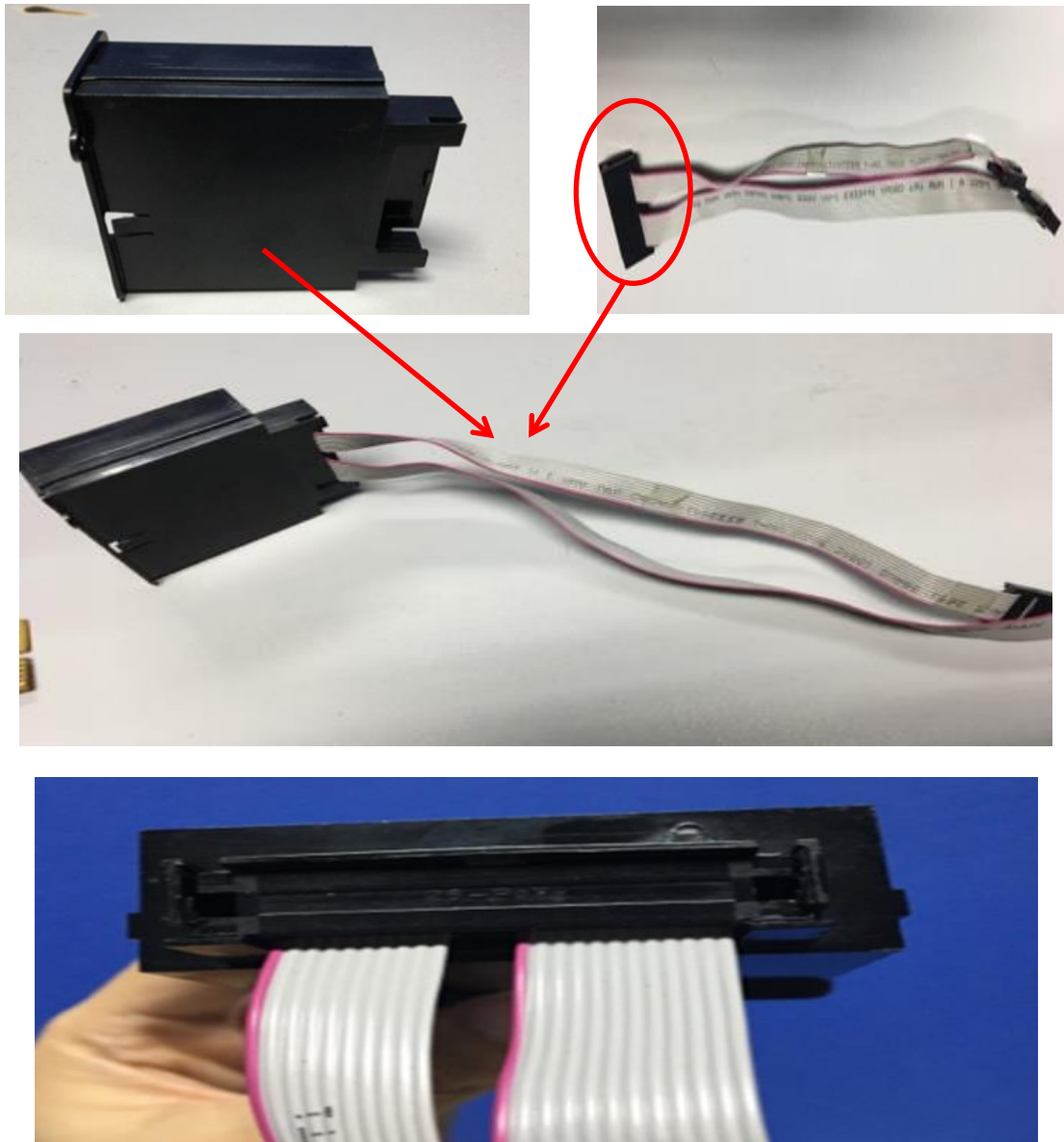


Figure 3 Install signal cable

4. Insert slot and SNMP card, as is shown in figure 4.

Note:

Please pay attention to the direction of slot, not reversed.

**Convex groove
in bottom place**





Figure 4 Insert slot

5. Connect the signal cables to control board, 10 pins terminal to PS1509_CT1-J3, 12 pins terminal to PS1509_CT1-J2, and fix these terminals with hot-melt adhesive, as is shown in figure 5.

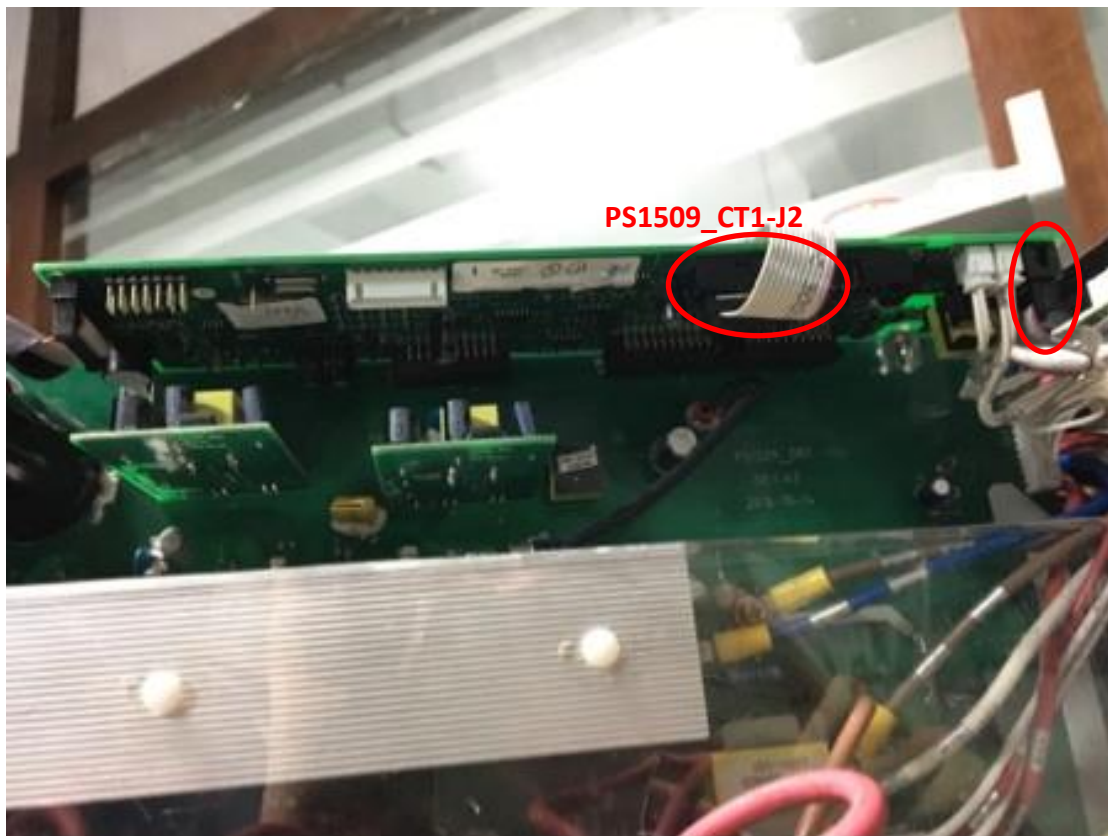


Figure 5 Connect the signal cables

6. Install back the cover of UPS.

Note:

For standard model (Built-in batteries), please install top cover first, then others.