

# SD Control Terminal Manual

## I. Control Interface:

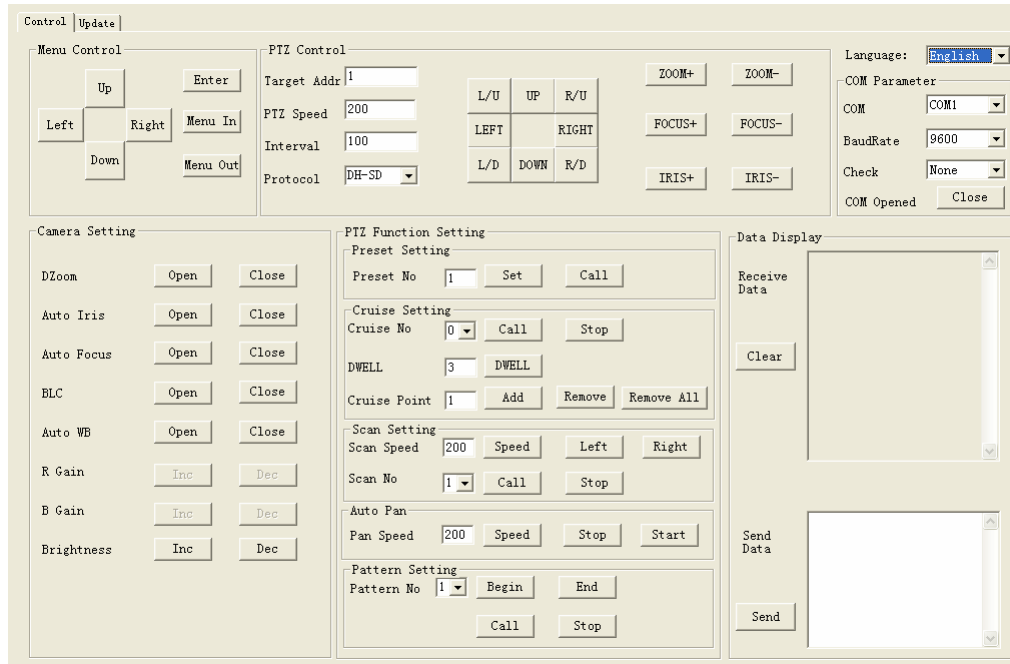


Figure1. SD Control Interface

- 1、 Choose a language in “Language” menu.
- 2、 “Comm. Parameter” menu is for setting serial port parameters.
  - “COM”: Choose a serial port.
  - “BaudRate”: Set the same speed as on Speed Dome.
  - “Check” : Set the same Check method as on Speed Dome.
  - (For DIP switch setting details, see Speed Dome Manual)
- 3、 If the selected serial port is occupied or fails to communicate, an error message will pop up. Make sure that the correct serial port is selected by clicking the “open” button.
- 4、 “PTZ Control”
  - “Target ID”: Set the Speed Dome address (corresponding hard/soft address according to DIP switch setting).
  - “PTZ Speed”: 0~255
  - “Interval”: the interval of continuous instructions, “ms” as unit.
  - “Protocol”: set the appropriate protocol.

L/U	UP	R/U
LEFT		RIGHT
L/D	DOWN	R/D

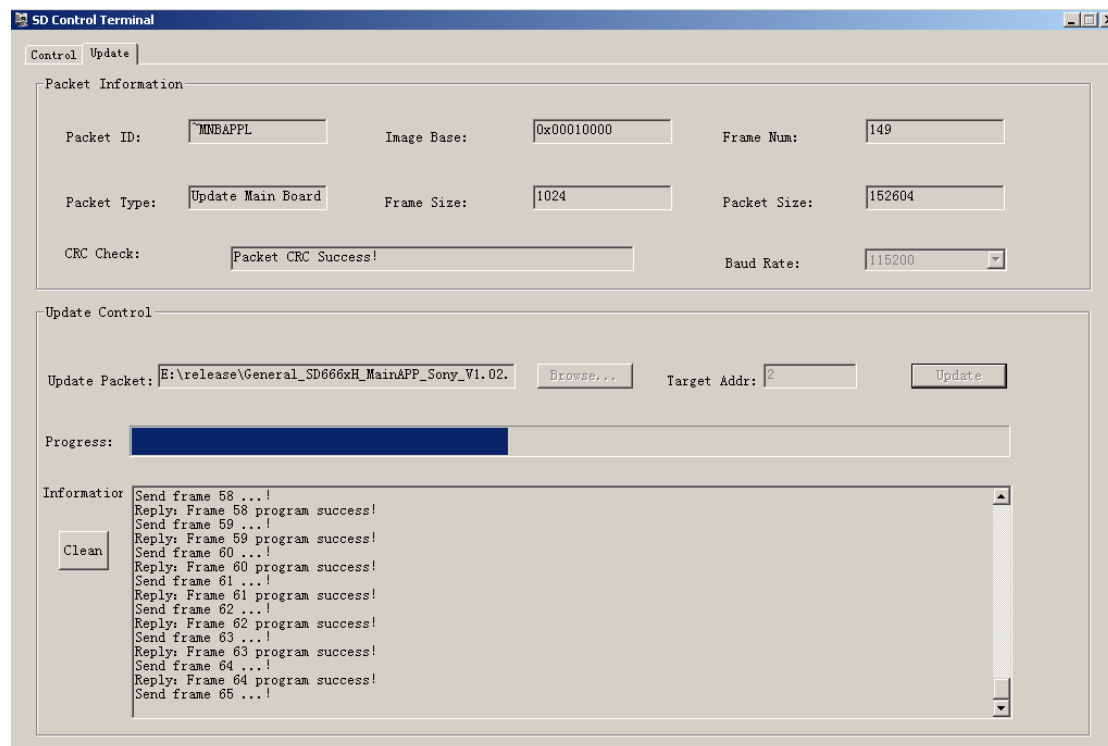
: Navigation control.

ZOOM+	ZOOM-
FOCUS+	FOCUS-
IRIS+	IRIS-

: Zoom, Focus and Iris controls.

- 5、 **“Menu Control”**:  
 “Menu In”/ “Menu Out”: enter/quit menu interface.  
 “Enter”: confirm operations.  
 “Up/Down/Left/Right”: select orders, modify parameters.  
 See Speed Dome manual for operation details.
- 6、 **“Camera Setting”**: Camera function/parameter settings.
- 7、 **“PTZ Function Setting”**: PTZ automatic functions.  
 “Preset Setting”: 200 preset points available. “Set” / “Call”: set/call a preset point.  
 “Cruise Setting”:  
     “Cruise No”: 8 cruise paths available. “Call” / “Stop”: call/stop a cruise path.  
     “Cruise Point”: “add”/ “remove” / “remove all” points of the current cruise path.  
 “Scan Setting”: 5 scan path available. “Call” / “Stop” a scan path.  
     “Scan Speed”: set scan Speed.  
     “Left”/ “Right”: set the left/right boundary of the scan path.  
 “Auto Pan”:  
     “Speed”: set auto pan speed.  
     “Stop”/ “Start”: stop/start auto pan.  
 “Pattern Setting”: 5 pattern path available.  
     “Begin”/ “end”: begin/end pattern path record.
- 8、      “Call”/ “Stop”: start/stop a selected pattern path.

## II、 Update Interface:



Speed Dome Update Interface

- 1、 Firstly, make sure that language and serial port parameters are configured correctly.
- 2、 “Baud Rate”: set baud rate of the update date transmission.

- 3、 Click “Brows” on the right of “Update Packet” to choose the update file. (The update file is a packaged file, released from formal channel. Otherwise, the update procedure may cause damage to speed dome and lead to paralysis.)
- 4、 “Target Addr”: enter the speed dome address set by DIP switch. (See Speed Dome manual for DIP switch setting).
- 5、 “Update”: click to start update; “Progress”: show update progress.

Note: When updating the speed dome under normal use, make sure that hard address is used. Online update is not feasible if the speed dome use soft address. In this case, we can update it by using cold boot.