



nag[®]
Follow the Expert



SNR WIRELESS ROUTERS

CONTENT

- SNR ROUTERS04
 - SNR-CPE-AX1.....04
 - SNR-CPE-ME2-SFP LITE.....05
 - SNR-CPE-ME2-LITE.....06
 - SNR-CPE-MD2.....07
 - SNR-CPE-W4N (REV. N)08
 - SNR LTE.....09
- USEFUL RESOURCES.....10



SNR WI-FI ADVANTAGES

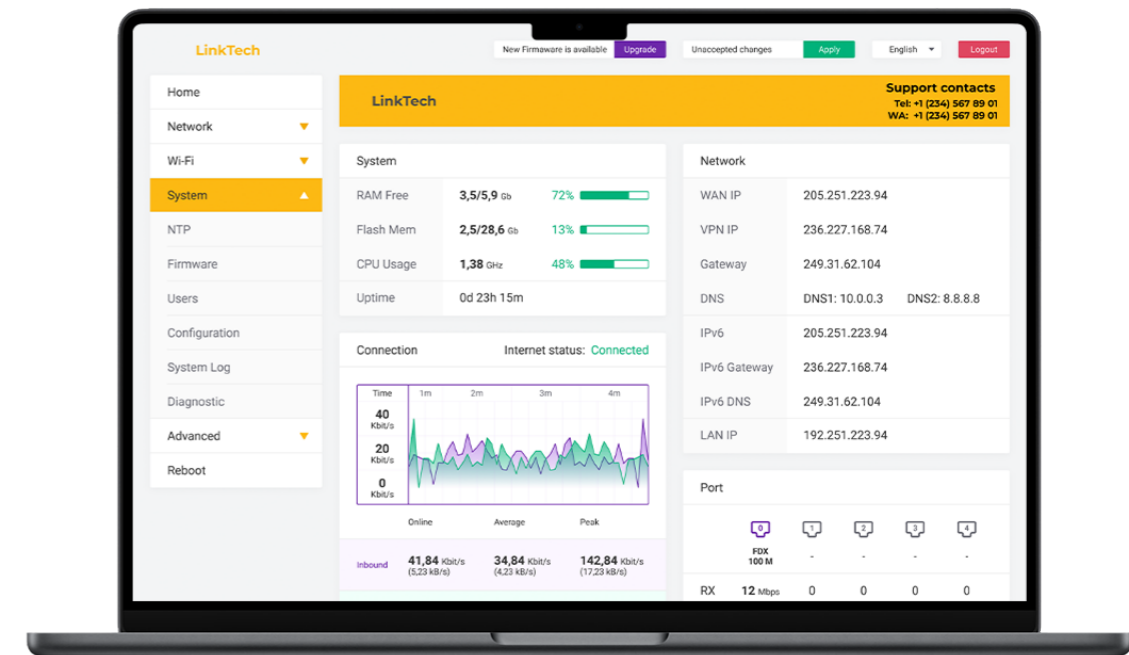
- We focus on telecom operators - support for technologies demanded by Internet providers, stability and performance
- A functional and open operating system that allows you to diagnose problems in the client's home network
- Active software development, regular release of versions with new functionality
- Operational support and correction of regressions, bugs and critical vulnerabilities

SNR WI-FI FUNCTIONALITY

- L2TP/PPTP/PPPoE/IPoE, IPv6/IPv4 Dual Stack support
- Flexible VLAN configuration
- IGMP Proxy/IGMP Snooping support
- Remote configuration using TR-069 (CWMP)
- Seamless Roaming (IEEE 802.11 k/r/v)
- Management of Internet Access scheduling
- Extended coverage with Mesh functionality

INDIVIDUAL APPROACH

- Package customization and branding (for 5000 pcs order)
- WEB interface customization and branding
- Regular customized software updates in parallel with original software updates
- Version control and whitelists of available software when updating via the WEB interface





SNR AX1

- 2.4 GHz 2T2R (up to 574 MBit/s)
- 5 GHz 2T2R ax (up to 1200 MBit/s)
- 1xWAN / 3xLAN Gigabit Ethernet
- Mesh

Gigabit Ethernet

The flagship gigabit model with Wi-Fi 6 support provides the maximum wireless connection performance in the SNR-CPE line.

SNR AX1 model is built on an MT7621AT 880MHz processor, 4 threads. Stable wireless communication is guaranteed by MT7905 radio module, 2.4 and 5 GHz bands, 4x5dBi antennas and MU-MIMO support. The integrated Gigabit switch will provide speeds of up to 2 GBit/s in bidirect (download+upload) mode for wired connections.

MAIN FEATURES

SoC and radio modules	Mediatek MT7621AT @880MHz (Dual Core), MT7975, MT7905
RAM/Flash capacity	256 MB/128 MB
Wireless interface	IEEE 802.11b/g/n/ax, 2T2R, 2.41-2.47GHz, 20 dBm IEEE 802.11a/an/ac/ax, 2T2R, 5.1-5.8GHz, 20 dBm
Antennas	4x5dBi, omnidirectional
LAN Ports	3x10/100/1000 MBit/s
WAN Port	1x10/100/1000 MBit/s
Roaming	802.11k/v/r
Mesh	Supported (wired, wireless)
Management	Web SSH TR-069 Android APP
Power supply	12V DC, 1A

ORDERING INFORMATION

SNR-RT622-G31	Wireless Router AX1, 802.11a/b/g/n/ac/ax, 4x5dBi, 4xGE RJ45
---------------	---



SNR-CPE-ME2-SFP LITE

- 2.4 GHz 2T2R (up to 300 MBit/s)
- 5 GHz 2T2R ac Wave 2 (up to 867 MBit/s)
- 1xSFP WAN / 4xLAN Gigabit Ethernet

Gigabit Ethernet

SNR-CPE-ME2-SFP LITE is recommended as large-scale affordable FTTH solution using Optical Ethernet technology (1000BASE-X).

Model is built on a MediaTek MT7621DAT 880MHz processor, 2 cores, 4 threads. MT7613AEN radio module covering 5GHz band (ac wave 2) and 2.4GHz band with 4x5 dBi antennas and MU-MIMO technology support provides stable wireless communication. Powerful integrated Gigabit switch supports up to 2 GBit/s in bidirect mode (download+upload) for wired connections.

MAIN FEATURES

SoC and radio modules	Mediatek MT7621DAT @880MHz (Dual Core), MT7613AEN, MT7603EN
RAM/Flash capacity	128 MB / 16 MB
Wireless interface	IEEE 802.11b/g/n, 2T2R, 2.41-2.47GHz, 20 dBm IEEE 802.11a/an/ac Wave 2, 2T2R, 5.1-5.8GHz, 20 dBm
Antennas	4x5dBi, omnidirectional
LAN Ports	4x100/1000 MBit/s
WAN Port	1xSFP 100/1000BASE-X
Seamless roaming	802.11k/r/v
Mesh	Supported (wired, wireless)
Management	Web SSH TR-069 Android APP
Power supply	12V DC, 1.5A

ORDERING INFORMATION

SNR-CPE-ME2-SFP Lite	Wireless Router SNR-CPE-ME2-SFP Lite, 802.11a/b/g/n/ac Wave 2, TxBeamforming, MU-MIMO, 4x5dBi
----------------------	---



SNR-CPE-ME2-LITE

- 2.4GHz 2T2R (up to 300 MBit/s)
- 5GHz 2T2R ac Wave 2 (up to 867 MBit/s)
- 1xWAN / 4xLAN Gigabit Ethernet

Gigabit Ethernet

SNR-CPE-ME2-Lite is recommended as an affordable customer device for FTTB solution using electrical GE connection (1000Base-T).

SNR-CPE-ME2-Lite is built on a MediaTek MT7621DAT 880MHz processor, 2 cores, 4 threads. MT7613AEN radio module covering 5GHz band (ac wave 2) and 2.4GHz band with 4x5 dBi antennas and MU-MIMO technology support provides stable wireless communication. Powerful integrated Gigabit switch supports up to 2 GBit/s in bidirect mode (download+upload) for wired connections.

MAIN FEATURES

SoC and radio modules	Mediatek MT7621DAT @880MHz (Dual Core), MT7613AEN, MT7603EN
RAM/Flash capacity	128 M5 / 16 MB
Wireless interface	IEEE 802.11b/g/n, 2T2R, 2.41-2.47GHz, 20 dBm IEEE 802.11a/an/ac Wave 2, 2T2R, 5.1-5.8GHz, 20 dBm
Antennas	4x5 dBi, omnidirectional
LAN Ports	4x10/100/1000 MBit/s
WAN Port	1x10/100/1000 MBit/s
Seamless roaming	802.11k/r/v
Mesh	Supported (wired, wireless)
Control	Web SSH TR-069 Android APP
Power supply	12V DC, 1A

ORDERING INFORMATION

SNR-CPE-ME2-Lite (rev. B)	Wireless Router SNR-CPE-ME2-Lite (rev. B), 802.11a/b/g/n/ac Wave 2, TxBeamforming, MU-MIMO, 4x5dBi, 5xGE RJ45
---------------------------	---



SNR-CPE-MD2

- 2.4 GHz 2T2R (up to 300 MBit/s)
- 5 GHz 2T2R Wave 2 (up to 867 MBit/s)
- 1xWAN / 4xLAN Fast Ethernet

Fast Ethernet

SNR-CPE-MD2 is recommended as a customer device for FTTB solution using electrical FE connection (up to 100Mbps).

The SNR-CPE-MD2 is built on a MediaTek MT7628DA @580MHz processor. A wireless network based on 2.4GHz and 5 GHz bands with MU-MIMO support will provide stable wireless communication.

The integrated switch will provide speeds of up to 200 MBit/s in bidirect (download+upload) mode for wired connections.

MAIN FEATURES

SoC and radio modules	MediaTek MT7628DA @580MHz, MT7613EN
RAM/Flash capacity	64 MB/16 MB
Wireless interface	IEEE 802.11b/g/n, 2T2R, 2.41-2.47GHz, 20 dBm IEEE 802.11an/ac Wave 2, 2T2R, 5.1-5.8GHz, 20 dBm
Antennas	4x5dBi, omnidirectional
LAN Ports	4x10/100 Mbit/s
WAN Port	1x10/100 Mbit/s
Seamless roaming	802.11k/r/v
Mesh	Supported (wired, wireless)
Control	Web SSH TR-069 Android APP
Power supply	12V DC, 1A

ORDERING INFORMATION

SNR-CPE-MD2	Wireless Router SNR-CPE-MD2, 802.11a/b/g/n/ac Wave 2, 5xFE RJ45
-------------	---



SNR-CPE-W4N (REV. N)

- 2.4 GHz 2T2R (up to 300 Mbits/s)
- 1xWAN / 4xLAN Fast Ethernet

Fast Ethernet

SNR-CPE-W4N (REV. N) is recommended for installation in the private sector, with 2.4 GHz clients.

The SNR-CPE-W4N (Rev.M) is built on a MediaTek MT7628NN @580MHz processor. A 2.4GHz MT7628NN-based wireless network with 2x5 dBi antennas and MIMO support will provide stable wireless connectivity.

The integrated switch will provide speeds of up to 200 Mbits/s in bidirect (download+upload) mode for wired connections.

MAIN FEATURES

SoC and radio modules	MediaTek MT7628NN @580MHz
RAM/Flash capacity	64 MB/8 MB
Wireless interface	IEEE 802.11b/g/n, 2T2R, 2.41-2.47GHz, 20 dBm
Antennas	2x5dBi, omnidirectional
LAN Ports	4x10/100 Mbit/s
WAN Port	1x10/100 Mbit/s
Control	Web SSH TR-069 Android APP
Power supply	5V DC, 1A

ORDERING INFORMATION

SNR-CPE-W4N (Rev. N)	Wireless Router SNR-CPE-W4N (Rev.N), 802.11b/g/n, 5 x FE RJ45
----------------------	---



SNR LTE

- 2.4 GHz 2T2R (up to 300 Mbit/s)
- LTE cat.4 up to 150 Mbit/s
- 1xWAN / 2xLAN Fast Ethernet
- Removable antennas

LTE

SNR LTE router will provide communication in cases when either access to traditional fixed-line networks is not available or fixed-line connection is not stable and require a backup LTE connection.

SNR LTE also uses EasyWRT software, which provides the benefits of the SNR ecosystem:

- Centralized management via CWMP
- Channel reservation
- Convenient monitoring and diagnostic tools

MAIN FEATURES

SoC and radio modules	MediaTek MT7628NN @580MHz
RAM/Flash capacity	64 MB/16 MB
LTE wireless interface	LTE cat.4 up to 150 Mbit/s LTE-FDD:B1/B3/B5/B7/B8/B20/B28 LTE-TDD:B38/B40/B41 WCDMA:B1/B8 GSM:900/1800
Wi-Fi wireless interface	IEEE 802.11b/g/n, 2T2R, 2.41-2.47GHz
Antennas	4x5dBi, omnidirectional removable (SMA-male/female)
LAN Ports	2x10/100 Mbits/s
WAN Port	1x10/100 Mbits/s
Control	Web SSH TR-069
SMS/USSD	Supported
Power supply	12V DC, 1A

ORDERING INFORMATION

SNR-RT420-F21-LTE	Wireless LTE router SNR-RT420-F21-LTE,802.11b/g/n
-------------------	---

GUARANTEED OBLIGATIONS AND SUPPORT



2 years warranty service



Operational support on support.nag.ru



Release of fixes when bugs are detected



Software development and support

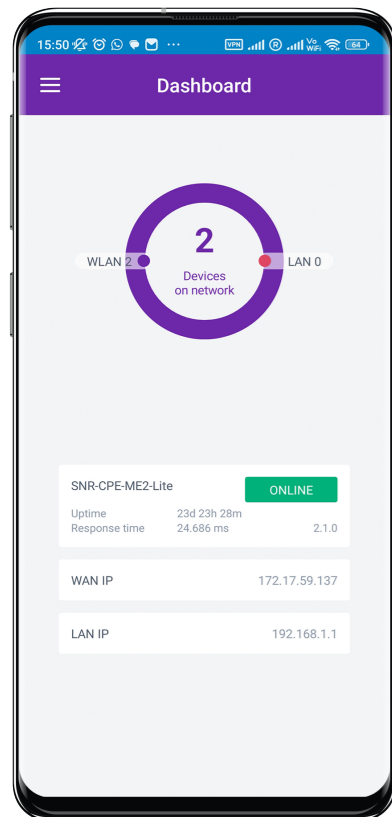
KNOWLEDGE BASE

Knowledge Base - a single entry point for the user of SNR routers



- Instructions for configuring SNR routers
- Warranty cases service information
- Support Contacts
- Up-to-date software for the device
- Articles about Wi-Fi and much more

SNR-CPE-CONFIG APPLICATION



- You can configure all the minimum necessary functions (Setup Wizard, WAN connections, wireless networks, TV, VLAN, etc.)
- Additional functions (connected clients, updating, diagnostics, saving/restoring configuration, etc.)
- Group application of settings - configure all functions without waiting for a reboot and apply at once



NAG is a leading telecom and IT solution provider representing a 20-year history of expertise. Since 2004 NAG has served multiple customers in 25+ countries in CIS and Middle East regions providing the following solutions:

- full range of equipment for telecom operators;
- L2 and L3 Networking solutions;
- SOHO WiFi Routers and IPTV STB equipment;
- intelligent video surveillance systems with built-in analytics;
- Servers and Storages;
- Infrastructure and Power supply solutions.

With over 650 dedicated employees, including a strong engineering team of 150+ employees, NAG operate seven representative offices strategically located in Ekaterinburg, Moscow, Novosibirsk, Rostov-on-Don, St. Petersburg, Perm, Almaty (Kazakhstan) and Tashkent (Uzbekistan). Our logistics centers in Moscow, Washington (USA) and Shanghai (China) allow working directly with foreign partners and ship out goods with the highest quality and optimized timelines.



EKATERINBURG

12A, Krasnolesya Street, 4th floor
+7 (343) 379-98-38
sales@nag.ru



MOSCOW

1a, Semyonovskaya Square, "Sokolnaya Gora" Business Center
13th floor; +7 (495) 950-57-11
msk@nag.ru



SAINT PETERSBURG

28/2, Bolshoi Sampsonievsky prospekt, office 325
+7 (812) 918-98-38, +7 (812) 406-8-100
spb@nag.ru



NOVOSIBIRSK

51, Gogolya Street,
+7 (383) 251-02-56
ns@nag.ru



ROSTOV-ON-DON

8, Beregovaya Street, office 409
+7 (863) 270-45-21
rostov@nag.ru



KAZAKHSTAN, ALMATYBI

151, Abay Ave., BC Alatau
+7 727 344 34 44
sales@nag.kz



UZBEKISTAN, TASHKENT

Mirzo-Ulugbek district,
st. Sairam 7-tor, d.52
+998 55 508 0660
sales@nag.uz

nag.company | snr.global