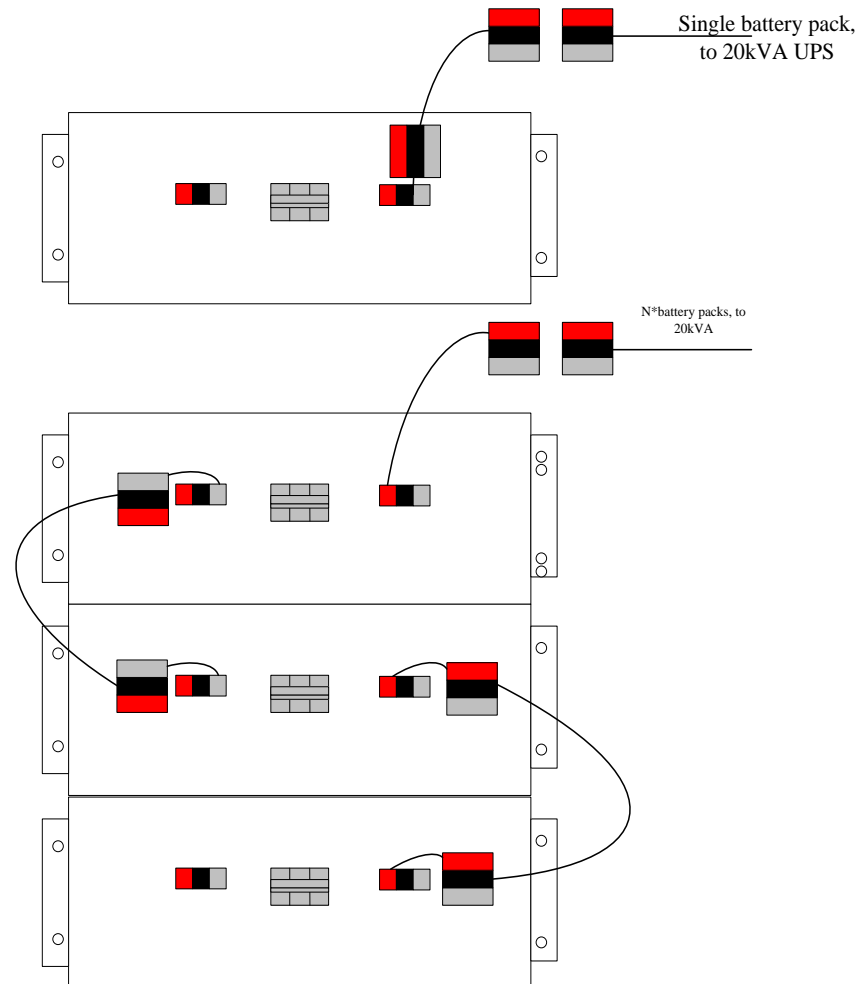


User Manual

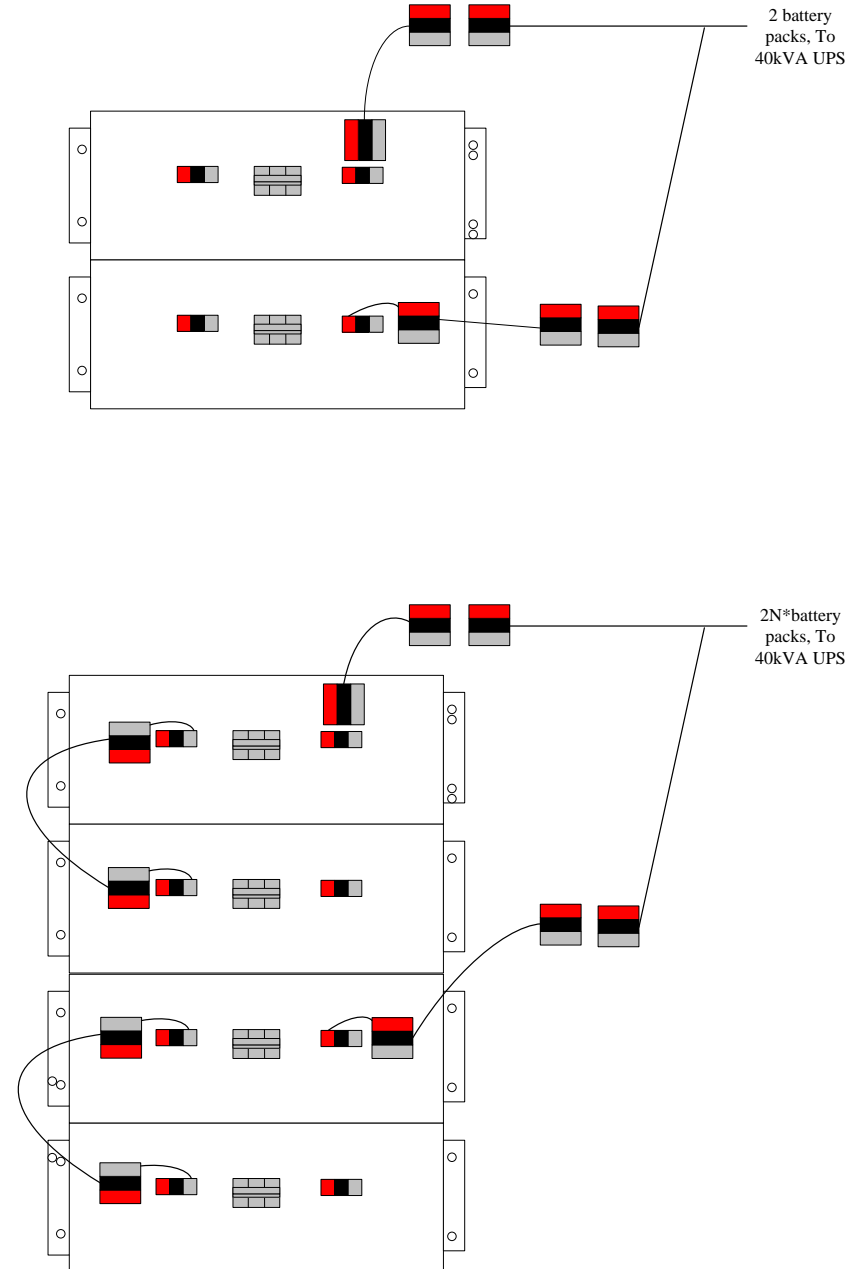
BAT40-480VDC Battery Cabinet

■ Installation

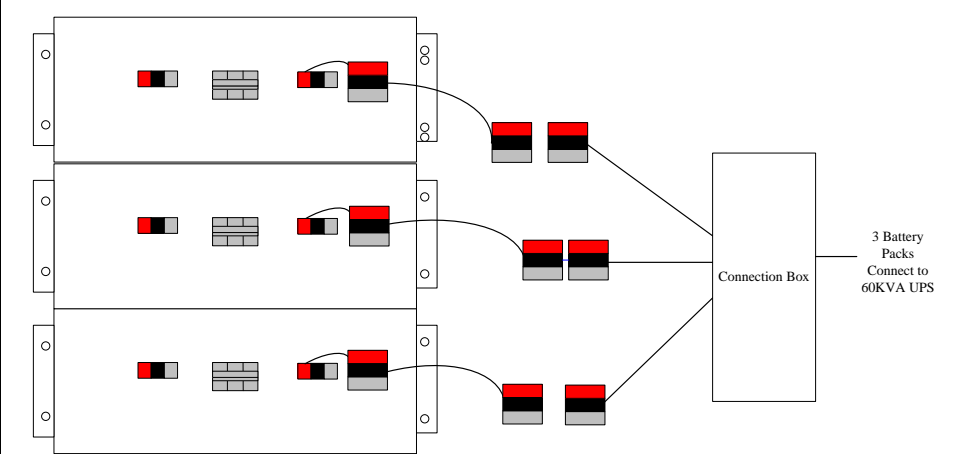
Connect to 10-20kVA UPS

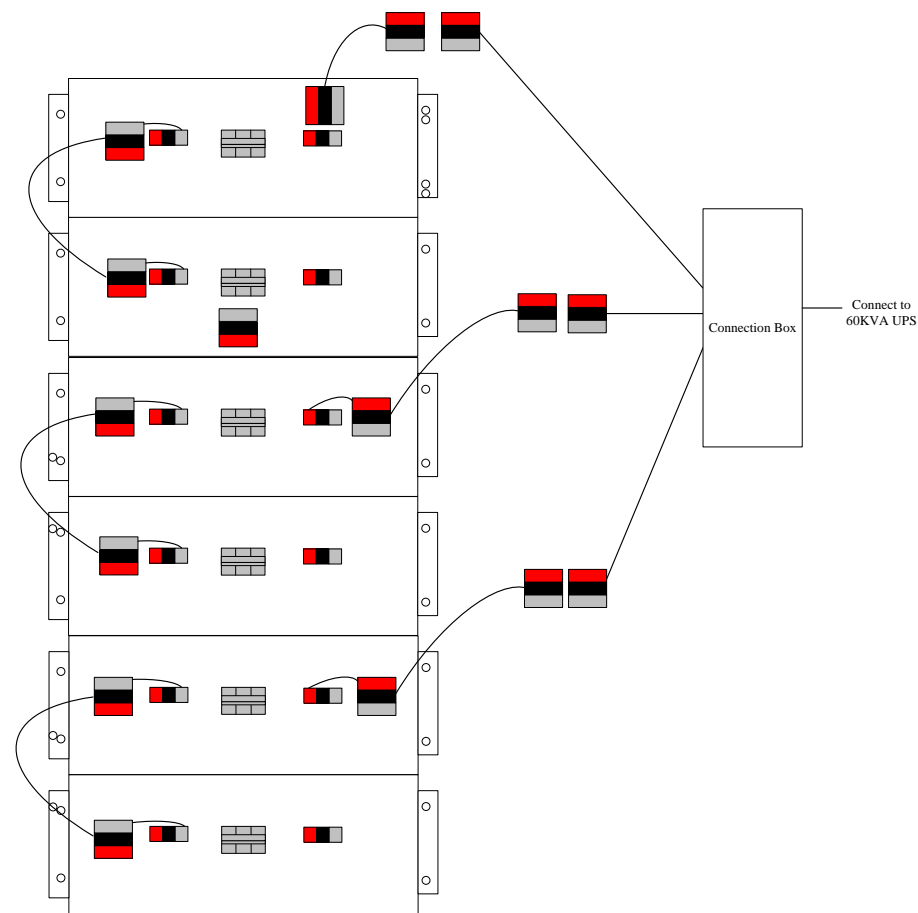


Connect to 30-40kVA UPS



Connect to 50-60KVA UPS

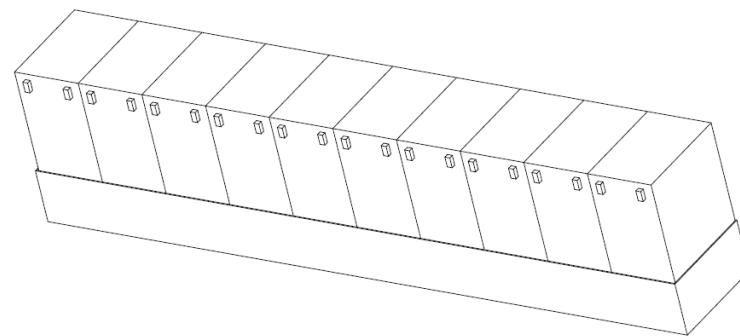




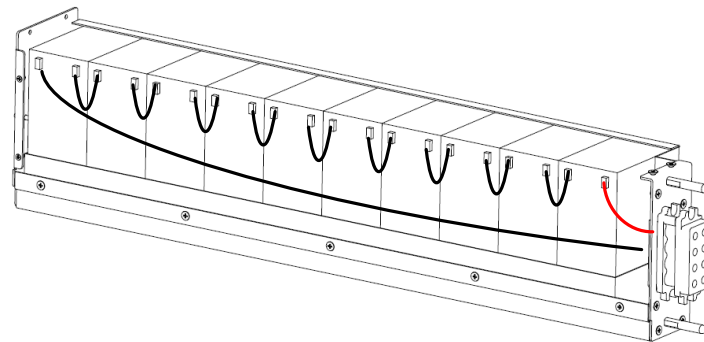
■ BATTERY Installation and Maintenance

Step 1: remove front panel and take out plastic shell

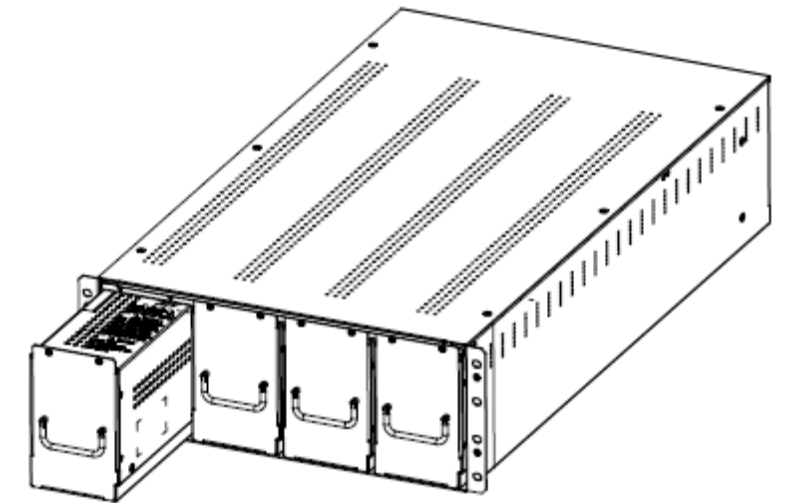
Step 2: remove the film of cohesive tape and then put 10 blocks of batteries on bottom shell to paste on it.



Step 3: push the battery and plastic pad into the battery pack from the front as shown in the picture below, connect the battery cable, and lock the front cover and top cover of the battery pack.



Step 4: test the voltage of the battery port to ensure it exceeds 120VDC, and insert the installed metal battery pack into the battery cabinet.



Step 5: put on the cabinet breaker. Use a multimeter to test whether the voltage of the battery cabinet port is normal. The positive voltage is greater than 240VDC, the negative voltage is greater than 240VDC, and the positive to negative voltage is greater than 480VDC.

Step 6: disconnect the breaker and install the front cover plate



warning:

Battery voltage over 480VDC, beware of electric shock.